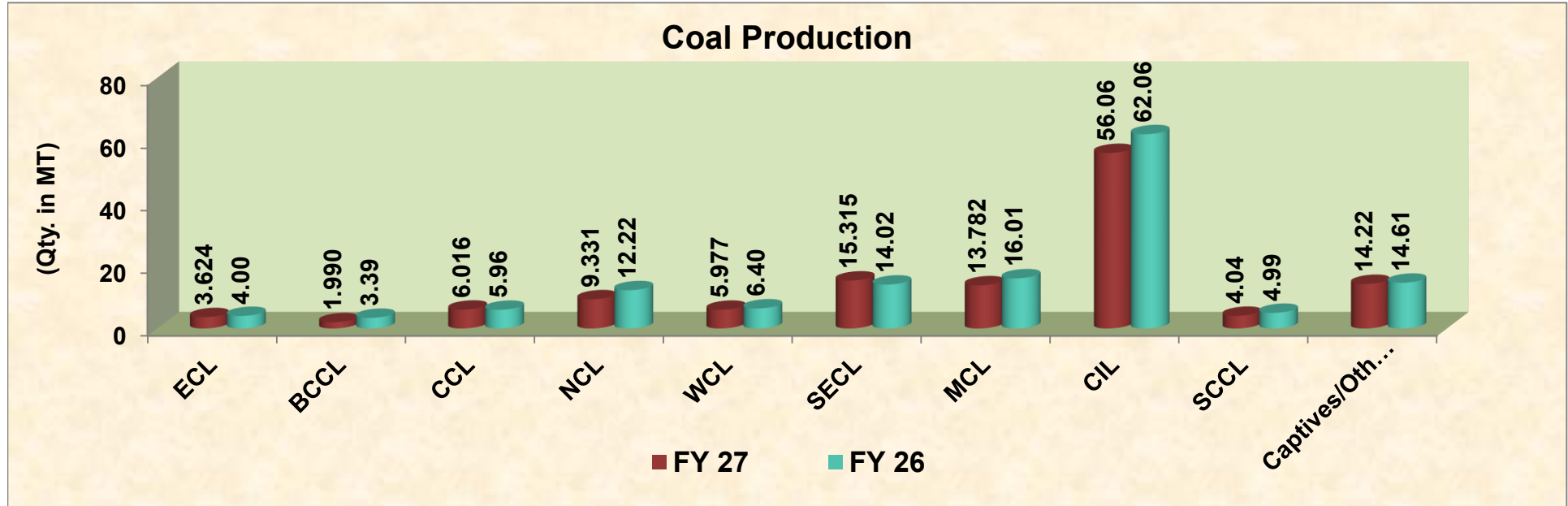


Monthly Coal Statistics for Apr'2026 (Provisional)

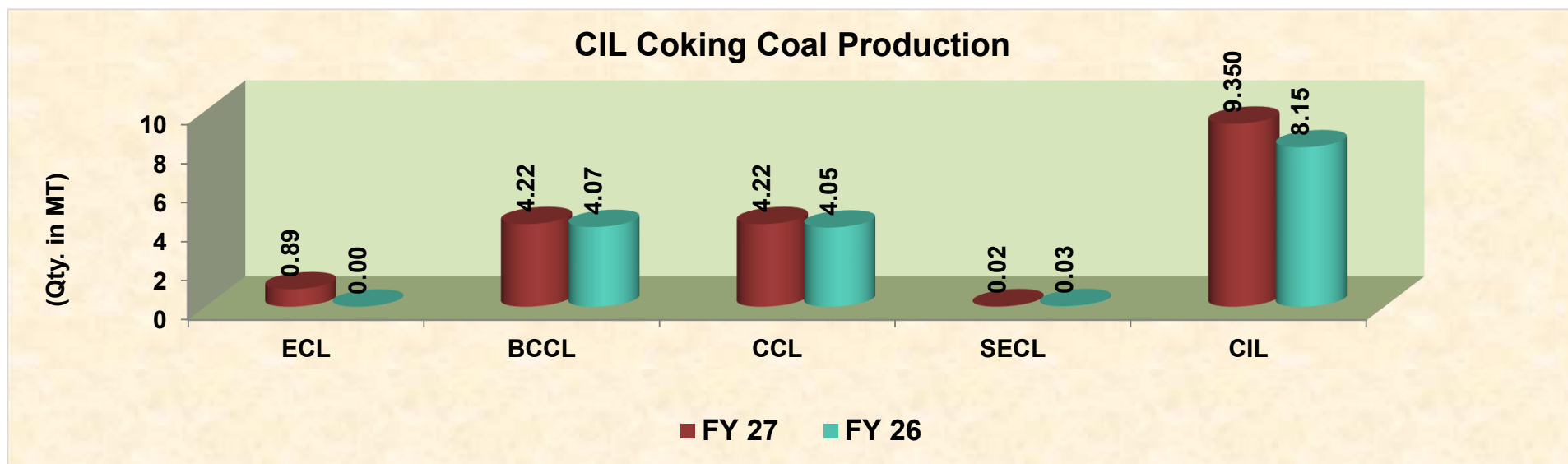
Coal Production



Coal Production

Fig. in MT

SI No	Subs	Monthly Target	Production during Apr				Production upto Apr		
			FY 27	Achmt.(%)	FY 26	Growth (%)	FY 27	FY 26	Growth (%)
1	ECL	3.96	3.624	91.63	4.00	▼ 9.47	3.62	4.00	▼ 9.47
2	BCCL	2.86	1.990	69.65	3.39	▼ 41.30	1.99	3.39	▼ 41.30
3	CCL	6.46	6.016	93.07	5.96	▲ 0.89	6.02	5.96	▲ 0.89
4	NCL	11.65	9.331	80.09	12.22	▼ 23.67	9.33	12.22	▼ 23.67
5	WCL	6.27	5.977	95.33	6.40	▼ 6.61	5.98	6.40	▼ 6.61
6	SECL	16.43	15.315	93.20	14.02	▲ 9.25	15.32	14.02	▲ 9.25
7	MCL	13.85	13.782	99.52	16.01	▼ 13.90	13.78	16.01	▼ 13.90
8	NEC	0.04	0.02	55.00	0.06	▼ 60.71	0.02	0.06	▼ 60.71
	CIL	61.52	56.06	91.13	62.06	▼ 9.67	56.06	62.06	▼ 9.67
9	SCCL	5.34	4.04	75.57	4.99	▼ 19.15	4.04	4.99	▼ 19.15
10	Captives/Others		14.22		14.61	▼ 2.68	14.22	14.61	▼ 2.68
Grand Total		66.86	74.314	111.15	81.66	▼ 9.00	74.31	81.66	▼ 9.00



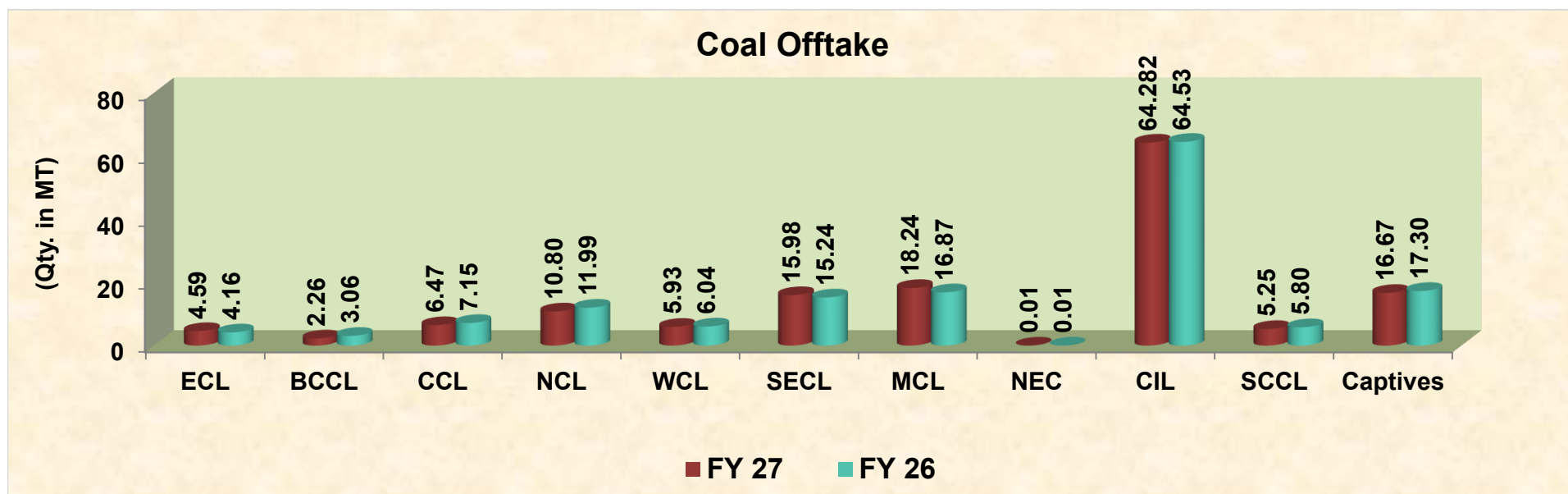
CIL Coking Coal Production

Fig. in MT

SI No	Subs	Monthly Target	Production during Apr				Production upto Apr		
			FY 27	Achmt.(%)	FY 26	Growth (%)	FY 27	FY 26	Growth (%)
1	ECL	0.41	0.89	216.0	0.00	▲ 29566.67	0.89	0.00	▲ 29566.67
2	BCCL	4.29	4.22	98.3	4.07	▲ 3.63	4.22	4.07	▲ 3.63
3	CCL	3.65	4.22	115.7	4.05	▲ 4.27	4.22	4.05	▲ 4.27
4	SECL	0.03	0.02	71.4	0.03	▼ 20.00	0.02	0.03	▼ 20.00
	CIL	8.38	9.350	111.6	8.15	▲ 14.77	9.35	8.15	▲ 14.77
5	Captive		0.05		0.05	▲ 3.11	0.05	0.05	▲ 3.11
6	Others		0.65		0.47	▲ 37.61	0.65	0.47	▲ 37.61
	Total	8.38	10.05	120.0	8.67	▲ 15.95	10.05	8.67	▲ 15.95

Coal Offtake

Coal Offtake



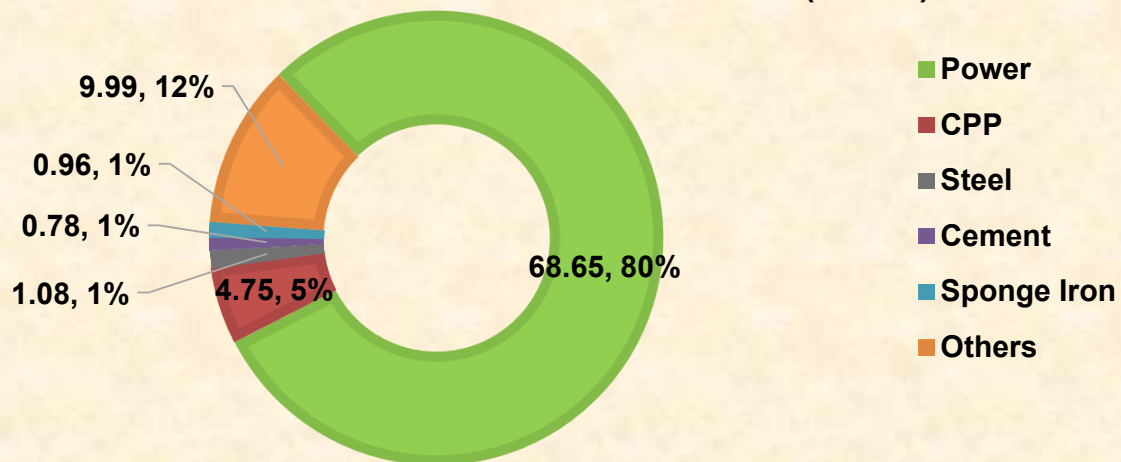
Coal Dispatch

Fig. in MT

SI No	Subs	Monthly Target	Dispatch during Apr				Offtake upto Apr		
			FY 27	Achmt.(%)	FY 26	Growth (%)	FY 27	FY 26	Growth (%)
1	ECL	4.23	4.59	108.51	4.16	▲ 10.21	4.59	4.16	▲ 10.21
2	BCCL	3.60	2.26	62.78	3.06	▼ 26.23	2.26	3.06	▼ 26.23
3	CCL	8.10	6.47	79.88	7.15	▼ 9.50	6.47	7.15	▼ 9.50
4	NCL	12.00	10.80	90.02	11.99	▼ 9.93	10.80	11.99	▼ 9.93
5	WCL	6.60	5.93	89.85	6.04	▼ 1.80	5.93	6.04	▼ 1.80
6	SECL	17.71	15.98	90.23	15.24	▲ 4.88	15.98	15.24	▲ 4.88
7	MCL	19.50	18.24	93.54	16.87	▲ 8.12	18.24	16.87	▲ 8.12
8	NEC	0.04	0.01	25.00	0.01	▼ 6.45	0.01	0.01	▼ 6.45
	CIL	71.78	64.282	89.55	64.53	▼ 0.38	64.28	64.53	▼ 0.38
9	SCCL	5.34	5.25	98.24	5.80	▼ 9.49	5.25	5.80	▼ 9.49
10	Captives		16.67		17.30	▼ 3.62	16.67	17.30	▼ 3.62
Grand Total		77.12	86.20	111.77	87.62	▼ 1.62	86.19	87.62	▼ 1.63

Coal Despatch to Different Sectors

COAL DESPATCH DURING APR'25 (IN MT)

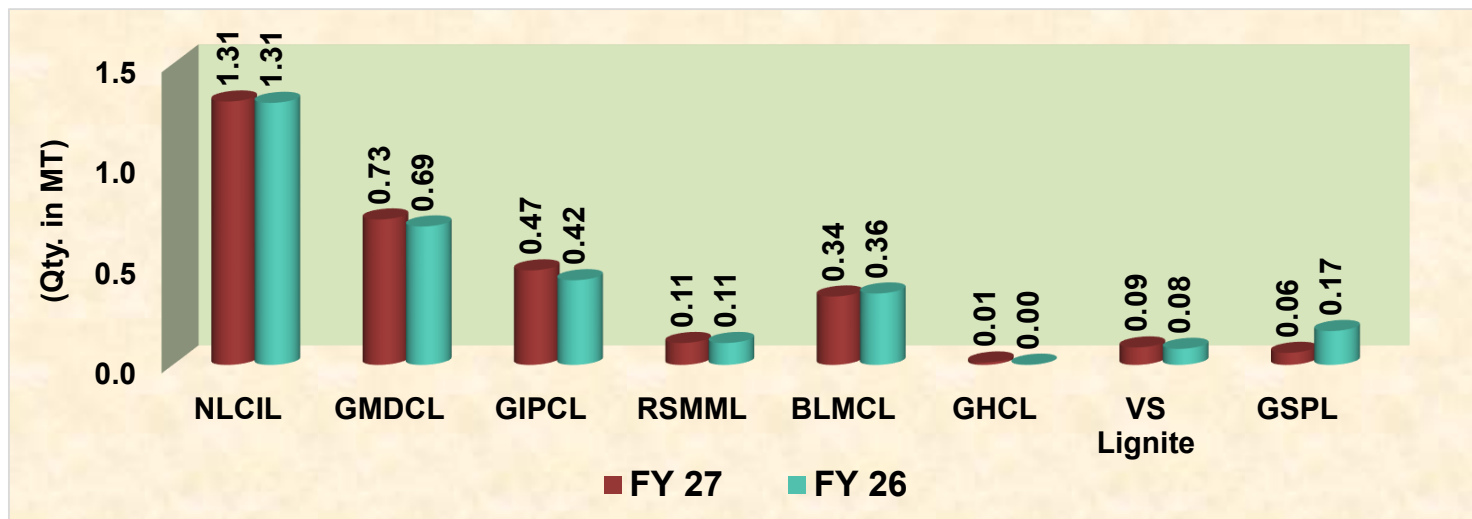


Coal Despatch to Different Sectors

Fig. in MT

Sectors	Dispatch during Apr			Offtake upto Apr		
	FY 27	FY 26	Growth (%)	FY 27	FY 26	Growth (%)
Power	68.65	70.21	▼ 2.22	68.65	70.21	▼ 2.22
CPP	4.75	6.14	▼ 22.63	4.75	6.14	▼ 22.63
Steel	1.08	1.68	▼ 35.49	1.08	1.68	▼ 35.49
Cement	0.78	0.98	▼ 21.13	0.78	0.98	▼ 21.13
Sponge Iron	0.96	0.82	▲ 17.73	0.96	0.82	▲ 17.73
Others	9.99	7.80	▲ 28.05	9.99	7.80	▲ 28.05
Total	86.20	87.62	▼ 1.62	86.19	87.62	▼ 1.63
Dispatch to Power	68.65	70.21	▼ 2.22	68.65	70.21	▼ 2.22
Dispatch to NRS	17.55	17.41	▲ 0.81	17.54	17.41	▲ 0.75

Lignite Production

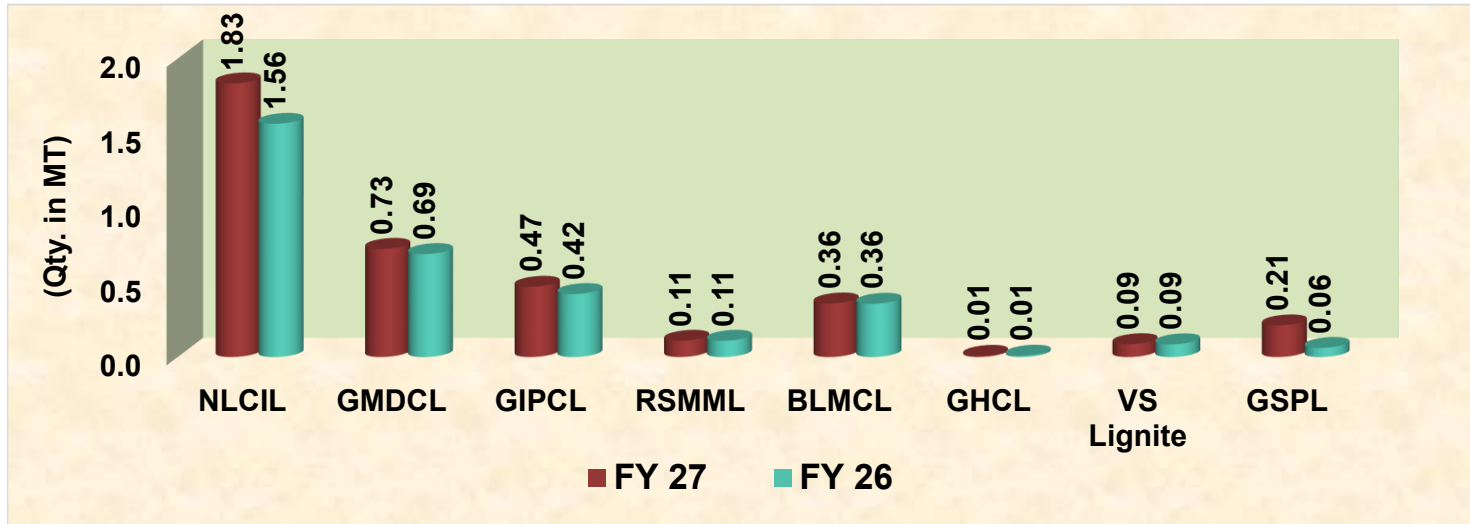


Lignite Production

Fig. in MT

SI No	Company	Production during Apr			Production upto Apr		
		FY 27	FY 26	Growth (%)	FY 27	FY 26	Growth (%)
1	NLCIL	1.31	1.31	▲ 0.54	1.31	1.31	▲ 0.54
2	GMDCL	0.73	0.69	▲ 5.07	0.73	0.69	▲ 5.07
3	GIPCL	0.47	0.42	▲ 11.61	0.47	0.42	▲ 11.61
4	RSMML	0.11	0.11	▲ 0.00	0.11	0.11	▲ 0.00
5	BLMCL	0.34	0.36	▼ 4.21	0.34	0.36	▼ 4.21
6	GHCL	0.01	0.00	▲ 1100.00	0.01	0.00	▲ 1100.00
7	VS Lignite	0.09	0.08	▲ 8.75	0.09	0.08	▲ 8.75
8	GSPL	0.06	0.17	▼ 64.50	0.06	0.17	▼ 64.50
Grand Total		3.12	3.13	▼ 0.48	3.12	3.13	▼ 0.48

Lignite Despatch

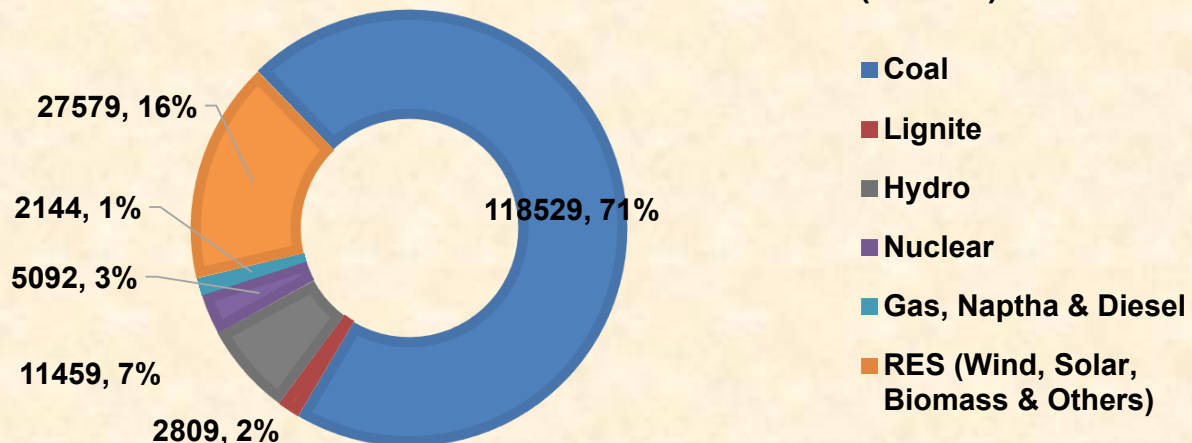


Lignite Despatch

Fig. in MT

SI No	Company	Dispatch during Apr			Offtake upto Apr		
		FY 27	FY 26	Growth (%)	FY 27	FY 26	Growth (%)
1	NLCIL	1.83	1.56	▲ 17.34	1.83	1.56	▲ 17.34
2	GMDCL	0.73	0.69	▲ 5.07	0.73	0.69	▲ 5.07
3	GIPCL	0.47	0.42	▲ 11.61	0.47	0.42	▲ 11.61
4	RSMML	0.11	0.11	▲ 0.00	0.11	0.11	▲ 0.00
5	BLMCL	0.36	0.36	▲ 0.56	0.36	0.36	▲ 0.56
6	GHCL	0.01	0.01	▼ 11.11	0.01	0.01	▼ 11.11
7	VS Lignite	0.09	0.09	▲ 1.18	0.09	0.09	▲ 1.18
8	GSPL	0.21	0.06	▲ 247.54	0.21	0.06	▲ 247.54
Grand Total		3.80	3.30	▲ 15.41	3.80	3.30	▲ 15.41

POWER GENERATION DURING APR'26 (IN MW)



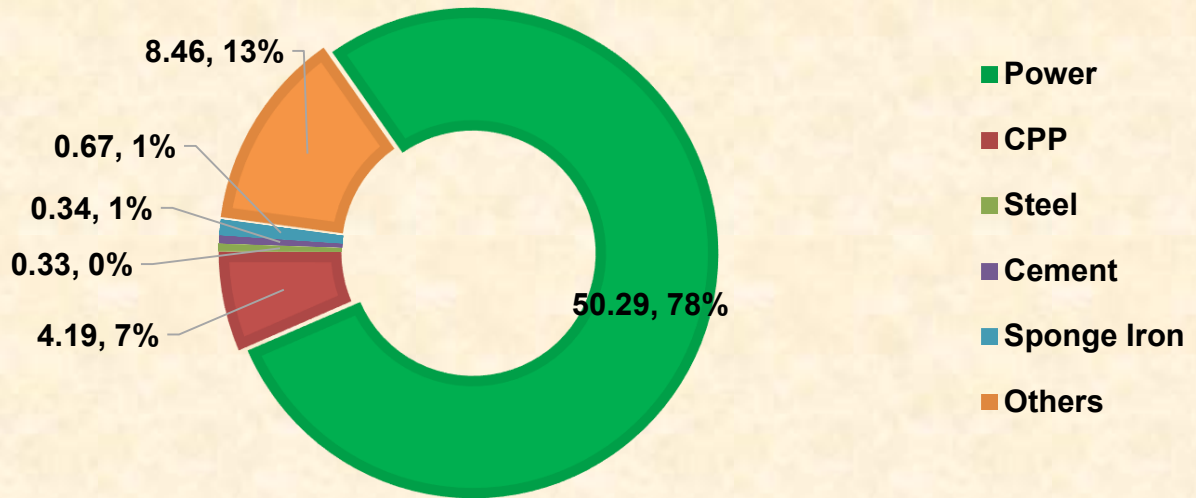
Power Generation

Source-wise	Apr-26	% share	Apr-25	Mar-26	Growth(%) Apr'25-Apr'26)	Growth(%) (Mar'26-Apr'26)
Coal	118529	70.72	115729	118527	▲ 2.42	▲ 0.00
Lignite	2809	1.68	2513	2896	▲ 11.79	▼ 2.99
Hydro	11459	6.84	10249	9973	▲ 11.81	▲ 14.90
Nuclear	5092	3.04	4930	5109	▲ 3.28	▼ 0.34
Gas, Naptha & Diesel	2144	1.28	3196	1571	▼ 32.92	▲ 36.47
RES (Wind, Solar, Biomass & Others)	27579	16.45	22554	24997	▲ 22.28	▲ 10.33
Total	167612	100.00	159171	163073	▲ 5.30	▲ 2.78

Source: POSOCO

Coal Despatch to Different Sectors

COAL DESPATCH BY CIL DURING APR'26 (IN MT)

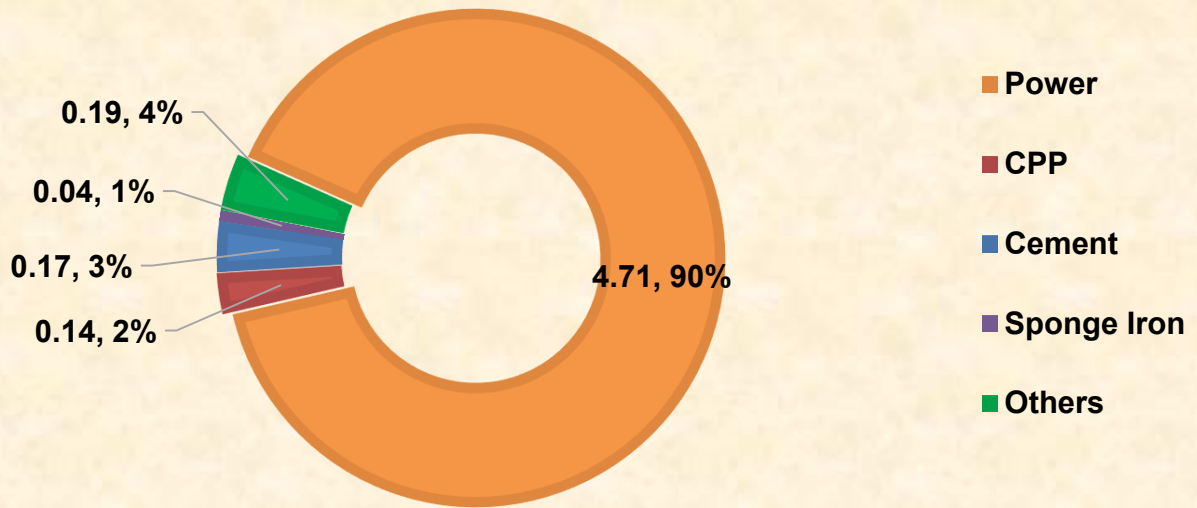


Despatch of Coal By CIL

Fig. in MT

Sectors	Coal Despatch during Apr'26			Coal Despatch upto Apr'26		
	FY 27	FY 26	Growth (%) (FY26-FY25)	FY 27	FY 26	Growth (%) (FY26-FY25)
Power	50.29	50.98	▼ 1.35	50.29	50.98	▼ 1.35
CPP	4.19	4.86	▼ 13.79	4.19	4.86	▼ 13.79
Steel	0.33	0.30	▲ 10.00	0.33	0.30	▲ 10.00
Cement	0.34	0.72	▼ 52.78	0.34	0.72	▼ 52.78
Sponge Iron	0.67	0.65	▲ 3.08	0.67	0.65	▲ 3.08
Others	8.46	7.02	▲ 20.57	8.46	7.02	▲ 20.57
Total	64.28	64.53	▼ 0.38	64.28	64.53	▼ 0.38

COAL DESPATCH BY SCCL DURING APR'26 (IN MT)

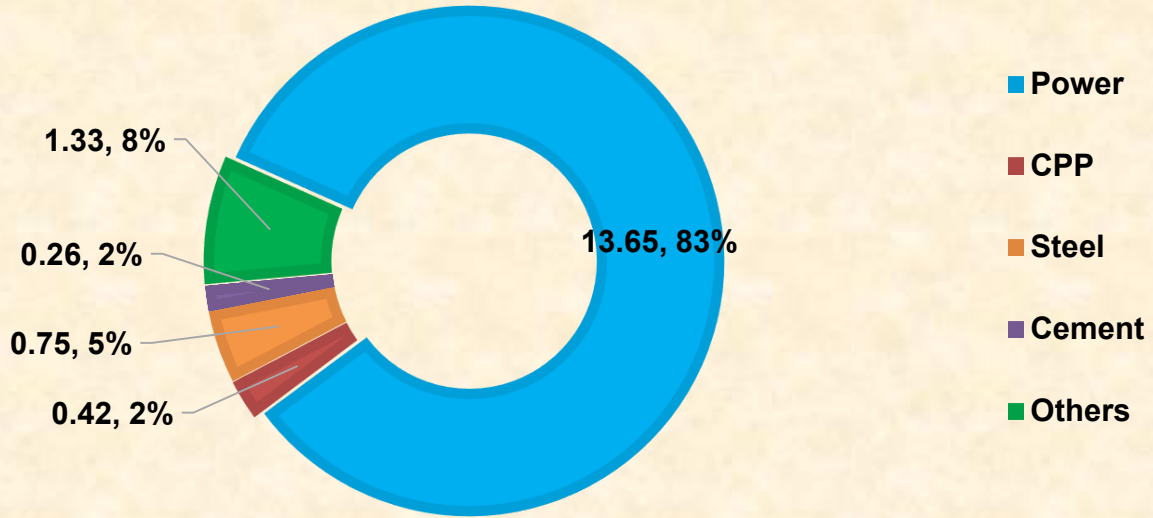


Despatch of Coal By SCCL

Fig. in MT

Sectors	Coal Despatch during Apr'26			Coal Despatch upto Apr'26		
	FY 27	FY 26	Growth (%) (FY26-FY25)	FY 27	FY 26	Growth (%) (FY26-FY25)
Power	4.71	5.49	▼ 14.26	4.71	5.49	▼ 14.26
CPP	0.14	0.11	▲ 26.36	0.14	0.11	▲ 26.36
Steel						
Cement	0.17	0.06	▲ 185.00	0.17	0.06	▲ 185.00
Sponge Iron	0.04	0.00		0.04	0.00	
Others	0.19	0.14	▲ 41.87	0.19	0.14	▲ 41.87
Total	5.25	5.80	▼ 9.49	5.25	5.80	▼ 9.49

COAL DESPATCH BY CAPTIVE DURING APR'26 (IN MT)



Coal Despatch by Captive and Others

Fig. in MT

Sectors	Coal Despatch during Apr'26			Coal Despatch upto Apr'26		
	FY 27	FY 26	Growth (%) (FY26-FY25)	FY 27	FY 26	Growth (%) (FY26-FY25)
Power	13.65	13.74	▼ 0.66	13.65	13.74	▼ 0.66
CPP	0.42	1.17	▼ 64.11	0.42	1.17	▼ 64.11
Steel	0.75	1.38	▼ 45.40	0.75	1.38	▼ 45.40
Cement	0.26	0.20	▲ 30.20	0.26	0.20	▲ 30.20
Sponge Iron	0.25	0.17	▲ 53.57	0.25	0.17	▲ 53.57
Others	1.33	0.64	▲ 106.62	1.33	0.64	▲ 106.62
Total	16.67	17.30	▼ 3.62	16.67	17.30	▼ 3.62

Top 35 Mines Production during Apr'26 (provisional)

Sr. No	Subsidiary	Mines	Annual Target (MT)	Target for Apr'26 (MT)	Actual Prod.in Apr'26 (MT)	Achievement
1	ECL	RAJMAHAL OC	15	1.00	0.86	86.00%
2	ECL	SONEPUR BAZARI OC	12	0.70	0.67	95.71%
3	BCCL	AMALGAMATED NTST KUJAMA OCP	7.1	0.57	0.525	92.11%
4	CCL	AMRAPALI OCP	24	1.72	1.17	68.02%
5	CCL	MAGADH OCP	23	1.66	1.64	98.80%
6	CCL	NORTH URIMARI SCHEME OC	5.29	0.38	0.36	94.74%
7	NCL	JAYANT OC MINE	30	2.1	1.88	89.52%
8	NCL	DUDHICHUA OC MINE	25	2.25	2.08	92.44%
9	NCL	NIGAHI OC MINE	25	1.35	0.79	58.52%
10	NCL	AMLOHRI OC MINE	15	1.40	1.21	86.43%
11	NCL	KHADIA OC MINE	15	1.44	1.41	97.92%
12	NCL	BINA OC MINE	12	1.14	0.85	74.56%
13	NCL	BLOCK B OC MINE	8	0.75	0.16	21.33%
14	NCL	KRISHNASHILA OC MINE	5.5	0.70	0.52	74.29%
15	WCL	AMLGTD GAURI PAUNI EXPN OCM	8	0.73	0.65	89.04%
16	WCL	MUNGOLI NIRGUDA OC MINE	5.25	0.47	0.52	110.64%
17	SECL	GEVRA OC	58.99	4.99	3.89	77.96%
18	SECL	KUSUMUNDA OC	40	3.37	3.26	96.74%
19	SECL	DIPKA OC	39	3.28	3.13	95.43%
20	SECL	CHHAL OC	7.4	0.62	0.85	137.10%
21	SECL	BAROUD OC	6.4	0.53	0.61	115.09%
22	SECL	JAGANNATH OC	5.25	0.44	0.42	95.45%
23	SECL	MANIKPUR OC	5.25	0.44	0.41	93.18%
24	MCL	BHUBANESWARI OC MINE	25	1.73	2.40	138.73%
25	MCL	ANANTA OC MINE	22.5	1.58	1.65	104.43%
26	MCL	SAIRMAL OCP	22.12	1.48	1.01	68.24%
27	MCL	LBL INTEGRATED PROJECT	22	1.18	1.58	133.90%
28	MCL	LINGARAJ OC MINE	18	1.48	1.55	104.73%
29	MCL	KULDA OC MINE	16	1.15	0.89	77.39%
30	MCL	GARJANBAHAL OC MINE	13	0.82	1.08	131.71%
31	MCL	HINGULA OC MINE	13	0.98	1.06	108.16%
32	MCL	BHARATHPUR OC MINE	12	0.82	0.63	76.83%
33	MCL	SAMLESWARI OC MINE	11.5	0.65	0.83	127.69%
34	MCL	KANHIA OC MINE	11	0.82	0.56	68.29%
35	MCL	JAGANNATH OC	6	0.4	0.1	21.95%
Total			589.55	45.13	41.20	91.28%

Particulars	No. of mines
Mines produced => 100%	10
Mines produced => 80% , but less than 100%	14
Mines produced => 50% , but less than 80%	9
Mines produced less than 50%	2

Top 35 Mines OBR during Apr'26 (provisional)

Sr. No	Subsidiary	Mines	Annual Target (M.Cum)	Target for Apr'26 (M.Cum)	Actual OBR. for Apr'26 (M.Cum)	Achievement
1	ECL	RAJMAHAL OC	31.8	2.86	3.26	113.99%
2	ECL	SONEPUR BAZARI OC	65.8	5.92	7.32	123.65%
3	BCCL	AMALGAMATED NTST KUJAMA OCP	35.75	2.7	1.77	65.56%
4	CCL	AMRAPALI OCP	25.49	1.86	1.93	103.76%
5	CCL	MAGADH OCP	23.99	1.75	1.89	108.00%
6	CCL	NORTH URIMARI SCHEME OC	9.9	0.72	1.39	193.06%
7	NCL	JAYANT OC MINE	68	3.10	5.65	182.26%
8	NCL	DUDHICHUA OC MINE	94.5	7.40	6.54	88.38%
9	NCL	NIGAH I OC MINE	83.75	6.65	7.05	106.02%
10	NCL	KHADIA OC MINE	67.7	6.54	6.17	94.34%
11	NCL	AMLOHRI OC MINE	48	4.55	4.50	98.90%
12	NCL	BINA OC MINE	42	4.08	4.21	103.19%
13	NCL	BLOCK B OC MINE	36	3.65	1.27	34.79%
14	NCL	KRISHNASHILA OC MINE	18.85	1.58	1.76	111.39%
15	WCL	AMLGTD GAURI PAUNI EXPN OCM	46.5	4.34	4.31	99.31%
16	WCL	MUNGOLI NIRGUDA OC MINE	22	2.02	1.79	88.61%
17	SECL	GEVRA OC	80	6.90	5.27	76.38%
18	SECL	KUSUMUNDA OC	42	3.62	3.81	105.25%
19	SECL	DIPKA OC	52	4.48	4.93	110.04%
20	SECL	CHHAL OC	40	3.45	3.37	97.68%
21	SECL	BAROUD OC	16	1.38	1.93	139.86%
22	SECL	MANIKPUR OC	7.5	0.64	0.01	1.56%
23	SECL	JAGANNATH OC	26.5	2.28	2.75	120.61%
24	MCL	BHUBANESWARI OC MINE	38	3.00	2.22	74.00%
25	MCL	ANANTA OC MINE	38	3.00	2.32	77.33%
26	MCL	SAIRMAL OCP	28	2.21	1.77	80.09%
27	MCL	LBL INTEGRATED PROJECT	72	5.69	6.30	110.72%
28	MCL	LINGARAJ OC MINE	15	1.18	1.19	100.85%
29	MCL	KULDA OC MINE	14	1.10	1.33	120.91%
30	MCL	GARJANBAHAL OC MINE	14	1.10	1.42	129.09%
31	MCL	HINGULA OC MINE	23	1.82	2.42	132.97%
32	MCL	BHARATHPUR OC MINE	12	0.94	0.55	58.51%
33	MCL	SAMLESWARI OC MINE	29	2.29	2.66	116.16%
34	MCL	KANHIA OC MINE	12	0.94	0.36	38.30%
35	MCL	JAGANNATH OC	7	0.6	0.2	30.91%
Total			1286.03	106.29	105.59	99.34%

Particulars	No. of mines
Mines produced => 100%	19
Mines produced => 80% , but less than 100%	7
Mines produced => 50% , but less than 80%	5
Mines produced less than 50%	4

Coal Production in mines of all Subsidiaries of CIL (provisional data)

Fig. in MT

SI No	Subs	Types of Mines	No of Producing Mines	Annual Target (MT)	During Apr			Upto Apr		
					FY 27	FY 26	Growth (%) M-O-M	FY 27	FY 26	Growth (%) Y-O-Y
1	ECL	Top 35	2	27.00	1.53	1.79	▼ 14.36	1.53	1.79	▼ 14.36
		Others	4	10.00	0.57	0.69	▼ 17.63	0.57	0.69	▼ 17.63
		Top 86	6	37.00	2.10	2.48	▼ 15.27	2.10	2.48	▼ 15.27
		Rest	74	19.00	1.52	1.52	▲ 0.00	1.52	1.52	▲ 0.00
	Overall ECL	80	56.00	3.62	4.00	▼ 9.47	3.62	4.00	▼ 9.47	
2	BCCL	Top 35	1	7.10	0.53	0.29	▲ 83.57	0.53	0.29	▲ 83.57
		Others	6	16.15	0.89	1.68	▼ 47.36	0.89	1.68	▼ 47.36
		Top 86	7	23.25	1.41	1.97	▼ 28.34	1.41	1.97	▼ 28.34
		Rest	32	15.75	0.58	1.42	▼ 59.25	0.58	1.42	▼ 59.25
	Overall BCCL	39	39.00	1.99	3.39	▼ 41.30	1.99	3.39	▼ 41.30	
3	CCL	Top 35	3	55.30	3.17	3.32	▼ 4.37	3.17	3.32	▼ 4.37
		Others	9	25.20	1.84	1.50	▲ 23.13	1.84	1.50	▲ 23.13
		Top 86	12	80.50	5.01	4.81	▲ 4.18	5.01	4.81	▲ 4.18
		Rest	29	15.50	1.00	1.15	▼ 12.85	1.00	1.15	▼ 12.85
	Overall CCL	41	96.00	6.02	5.96	▲ 0.89	6.02	5.96	▲ 0.89	
4	MCL	Top 35	12	212.12	13.33	15.38	▼ 13.33	13.33	15.38	▼ 13.33
		Others	2	7.50	0.36	0.59	▼ 39.80	0.36	0.59	▼ 39.80
		Top 86	14	219.62	13.69	15.97	▼ 14.32	13.69	15.97	▼ 14.32
		Rest	3	0.38	0.10	0.03	▲ 187.88	0.10	0.03	▲ 187.88
	Overall MCL	17	220.00	13.78	16.01	▼ 13.90	13.78	16.01	▼ 13.90	
5	NCL	Top 35	8	135.50	8.90	11.75	▼ 24.25	8.90	11.75	▼ 24.25
		Others	1	4.00	0.36	0.42	▼ 15.88	0.36	0.42	▼ 15.88
		Top 86	9	139.50	9.26	12.17	▼ 23.96	9.26	12.17	▼ 23.96
		Rest	1	0.50	0.08	0.05	▲ 43.40	0.08	0.05	▲ 43.40
	Overall NCL	10	140.00	9.33	12.22	▼ 23.67	9.33	12.22	▼ 23.67	
6	SECL	Top 35	7	162.30	12.57	11.73	▲ 7.21	12.57	11.73	▲ 7.21
		Others	5	14.40	1.19	0.97	▲ 22.48	1.19	0.97	▲ 22.48
		Top 84	12	176.70	13.76	12.70	▲ 8.38	13.76	12.70	▲ 8.38
		Rest	50	18.30	1.55	1.32	▲ 17.66	1.55	1.32	▲ 17.66
	Overall SECL	62	195.00	15.32	14.02	▲ 9.25	15.32	14.02	▲ 9.25	
7	WCL	Top 35	2	13.25	1.17	0.61	▲ 91.18	1.17	0.61	▲ 91.18
		Others	15	44.65	3.37	4.12	▼ 18.14	3.37	4.12	▼ 18.14
		Top 86	17	57.90	4.54	4.73	▼ 3.99	4.54	4.73	▼ 3.99
		Rest	30	11.10	1.44	1.67	▼ 14.02	1.44	1.67	▼ 14.02
	Overall WCL	47	69.00	5.98	6.40	▼ 6.61	5.98	6.40	▼ 6.61	
8	CIL	Top 35	35	612.57	41.20	44.86	▼ 8.16	41.20	44.86	▼ 8.16
		Others	42	121.90	8.58	9.98	▼ 14.07	8.58	9.98	▼ 14.07
		Top 77	77	734.47	49.77	54.84	▼ 9.23	49.77	54.84	▼ 9.23
		Rest of mines	220	80.77	6.28	7.22	▼ 12.97	6.28	7.22	▼ 12.97
	Overall CIL	297	815.24	56.06	62.06	▼ 9.67	56.06	62.06	▼ 9.67	

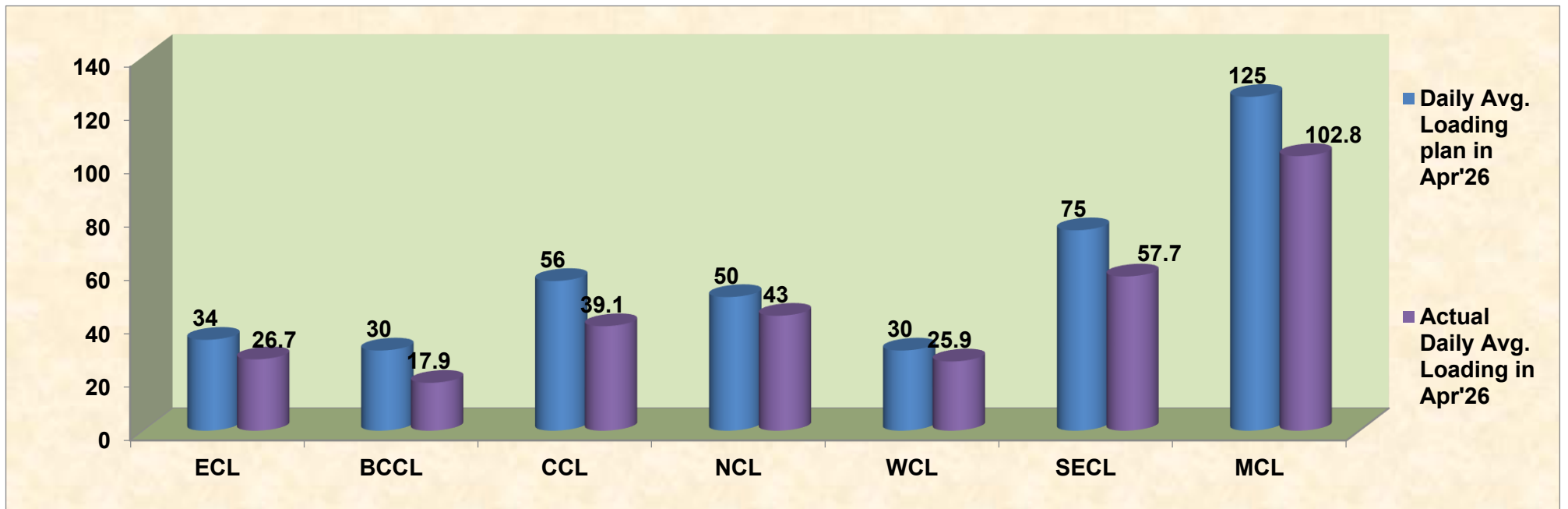
Top 77 = Top 35 + others mines including in top 77 mines

Rest of Mines = other than top 77

Overall Mines = Top 77 + rest of mines

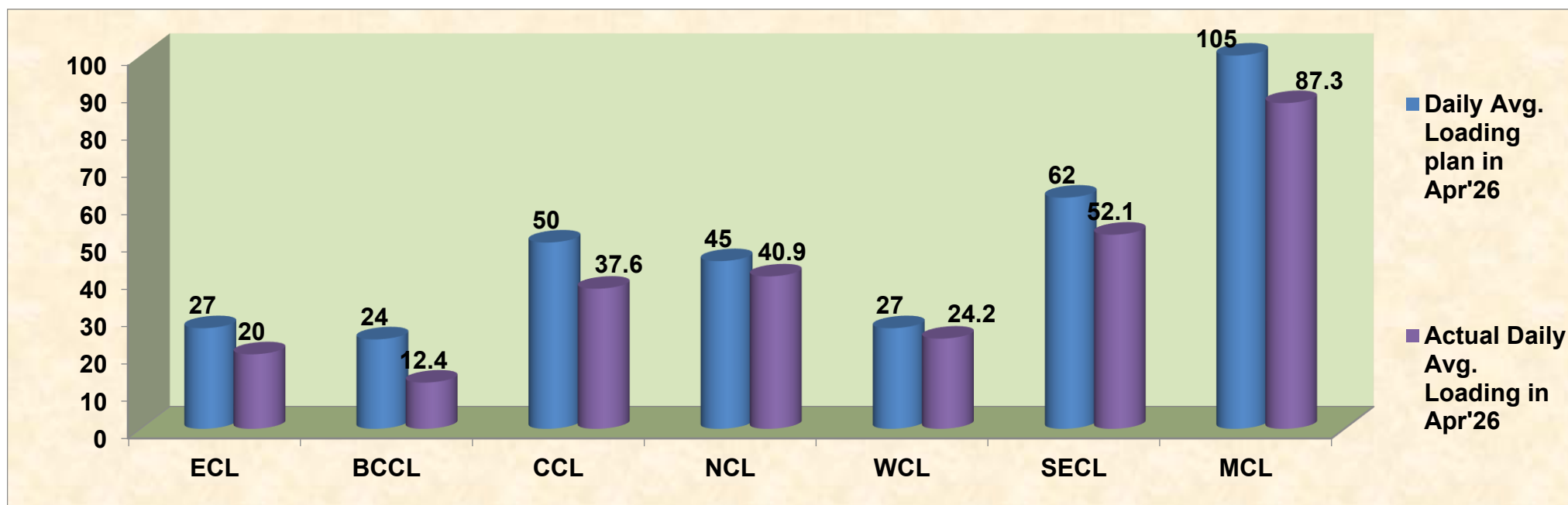
Company-wise movement of rakes for all sectors per day during FY 2026-27 (Prov.)

Company	Daily Avg. Loading plan in Apr'26	Actual Daily Avg. Loading in Apr'26	Achievemnt (%)	Actual Daily Avg. Loading in Apr'25	Growth% (Apr'25 to Apr'26)
ECL	34	26.7	78.53	27.9	▼ 4.30
BCCL	30	17.9	59.67	25.2	▼ 28.97
CCL	56	39.1	69.82	46.7	▼ 16.27
NCL	50	43	86.00	47.8	▼ 10.04
WCL	30	25.9	86.33	26.2	▼ 1.15
SECL	75	57.7	76.93	54.1	▲ 6.65
MCL	125	102.8	82.24	94.9	▲ 8.32
Total	400.0	313.1	78.3	322.8	▼ 3.00



Company-wise movement of rakes for power sector per day during FY 2026-27 (Prov.)

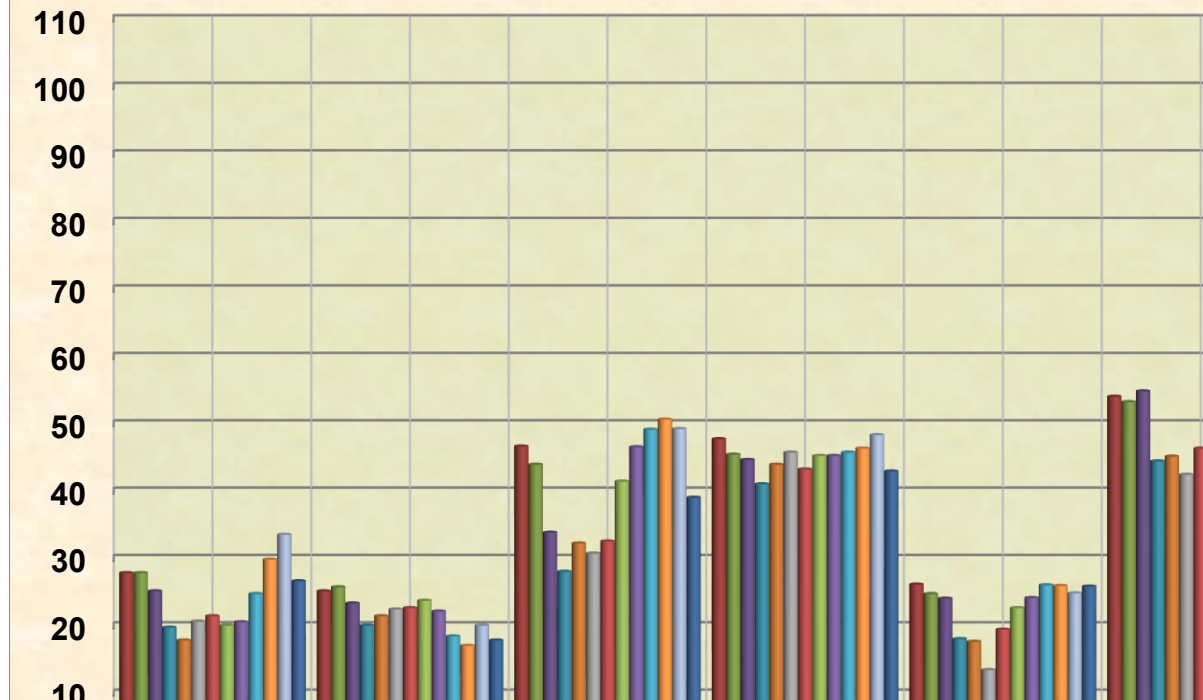
Company	Daily Avg. Loading plan in Apr'26	Actual Daily Avg. Loading in Apr'26	Achievemnt (%)	Actual Daily Avg. Loading in Apr'25	Growth% (Apr'25 to Apr'26)
ECL	27	20	74.07	22.9	▼ 12.66
BCCL	24	12.4	51.67	21.5	▼ 42.33
CCL	50	37.6	75.20	44.9	▼ 16.26
NCL	45	40.9	90.89	41.1	▼ 0.49
WCL	27	24.2	89.63	25.4	▼ 4.72
SECL	62	52.1	84.03	47.5	▲ 9.68
MCL	105	87.3	83.14	81.8	▲ 6.72
Total	340.0	274.5	80.7	285.1	▼ 3.72



Company-wise movement of rakes for all sectors per day during Apr'25 to Apr'26 (

COMPANY	Apr'25	May'25	June'25	July'25	Aug'25	Sept'25	Oct'25	Nov'25	Dec'25	Jan'26
ECL	27.9	27.9	25.2	19.8	17.9	20.7	21.5	20.1	20.6	24.8
BCCL	25.2	25.8	23.4	20.1	21.5	22.5	22.7	23.8	22.2	18.5
CCL	46.7	44	33.9	28.1	32.3	30.8	32.6	41.5	46.6	49.2
NCL	47.8	45.5	44.7	41.1	44	45.8	43.3	45.3	45.3	45.8
WCL	26.2	24.8	24.1	18.1	17.7	13.5	19.5	22.7	24.2	26.1
SECL	54.1	53.3	54.9	44.5	45.2	42.5	46.4	58.9	60.2	58.8
MCL	94.9	97.4	98.9	98.3	105.1	102.9	103.6	98.6	97.8	99.1
Total	322.80	318.70	305.10	270.00	283.70	278.70	#####	310.90	316.90	322.30

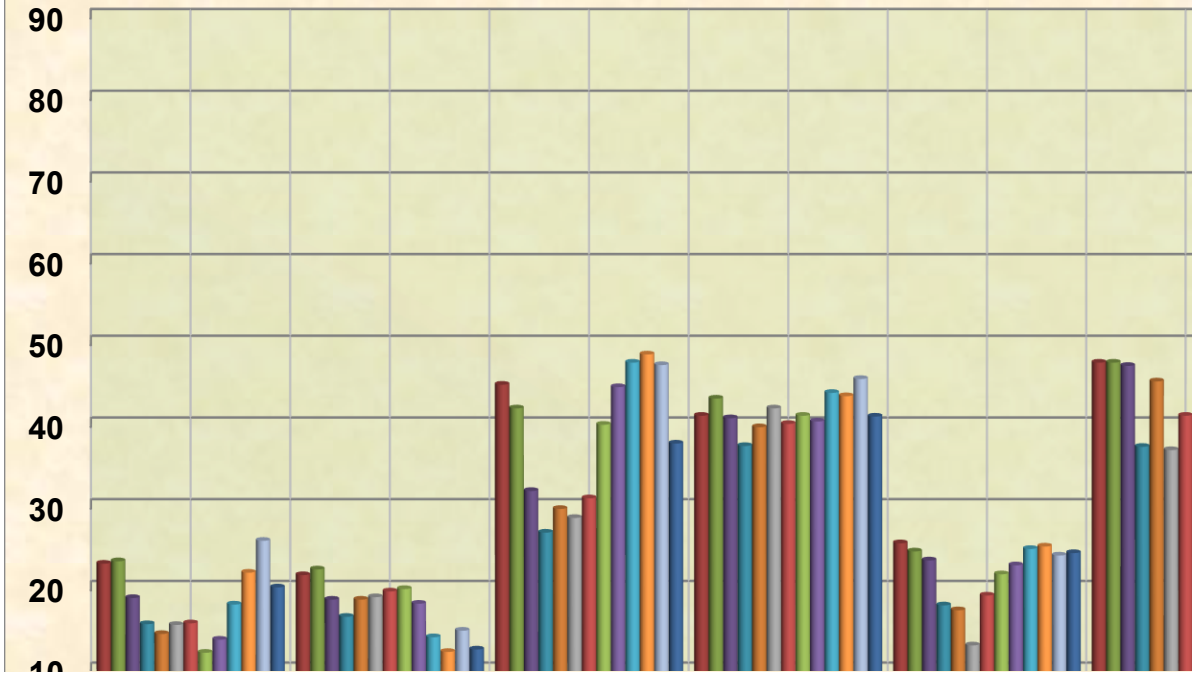
Actual Rakes Loading Status (All Sectors)



Company-wise movement of rakes for power sector per day during Apr'25 to Apr'26

COMPANY	Apr'25	May'25	June'25	July'25	Aug'25	Sept'25	Oct'25	Nov'25	Dec'25	Jan'26
ECL	22.9	23.2	18.7	15.5	14.3	15.4	15.6	12	13.6	17.9
BCCL	21.5	22.2	18.5	16.4	18.5	18.8	19.5	19.8	18	13.9
CCL	44.8	41.9	31.8	26.7	29.6	28.5	30.9	39.9	44.5	47.5
NCL	41	43.1	40.7	37.3	39.6	41.9	40	41	40.3	43.8
WCL	25.4	24.4	23.3	17.8	17.2	12.9	19	21.6	22.7	24.7
SECL	47.5	47.5	47.1	37.2	45.2	36.8	41	51.3	50.9	50.1
MCL	81.8	84.7	83.5	81.5	105.1	89.8	88.8	82.9	81.1	84.1
Total	284.90	287.00	263.60	232.40	269.50	244.10	#####	268.50	271.10	282.00

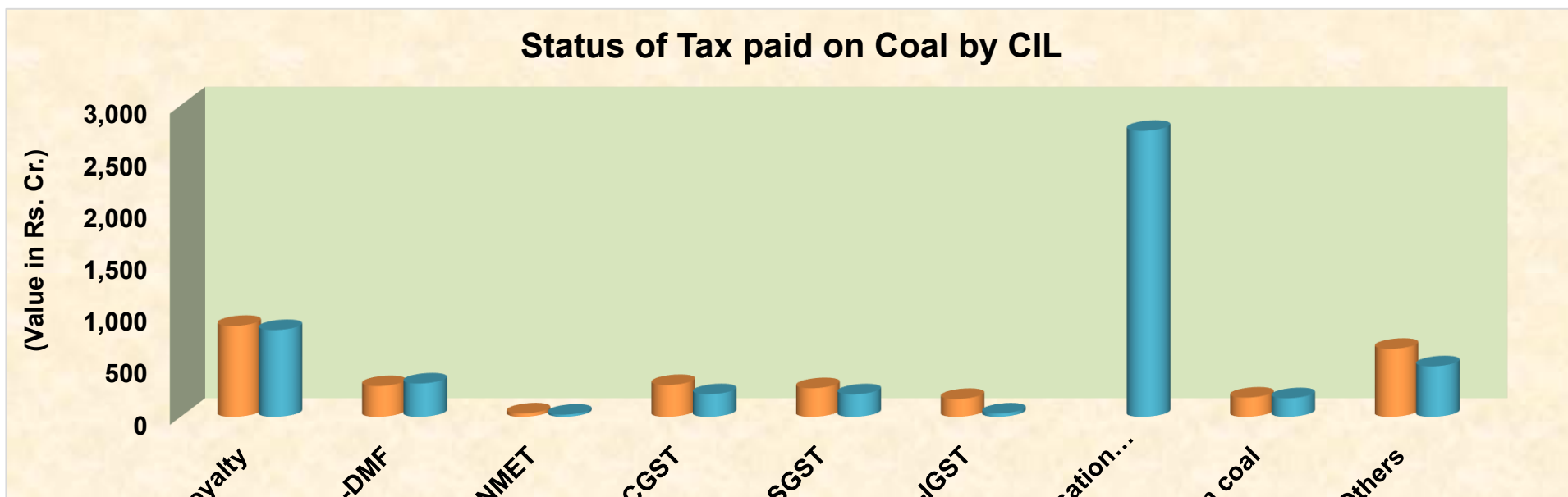
Actual Rakes Loading Status (Power Sectors)



Payment made by CIL to government exchequer (Central and State) during Apr'2026 (Prov.)

Particulars	Total levies paid (Rs. Cr.)		Total levies paid (Rs. Cr.)		Progressive Growth(%)
	Apr'2026	Apr'2025	Upto Apr'2026	Upto Apr'2025	
Royalty	876.22	836.12	876.22	836.12	▲ 4.80
<i>Addnl Royalty under MMDR Act</i>			-		
-DMF	295.96	321.23	295.96	321.23	▼ 7.87
-NMET	32.57	21.41	32.57	21.41	▲ 52.13
Goods and Service Tax:			-		
-CGST	306.07	217.4	306.07	217.40	▲ 40.79
-SGST	275.52	216.6	275.52	216.60	▲ 27.20
-IGST	171.97	31.84	171.97	31.84	▲ 440.11
GST Compensation Cess		2,756.27	-	2,756.27	
Cess on coal	185.23	179.13	185.23	179.13	▲ 3.41
Others	655.26	486.59	655.26	486.59	▲ 34.66
Total	2,798.80	5066.59	2,798.80	5066.59	▼ 44.76

Note: This exchequer report is on cash payment basis.



■ Apr'2026

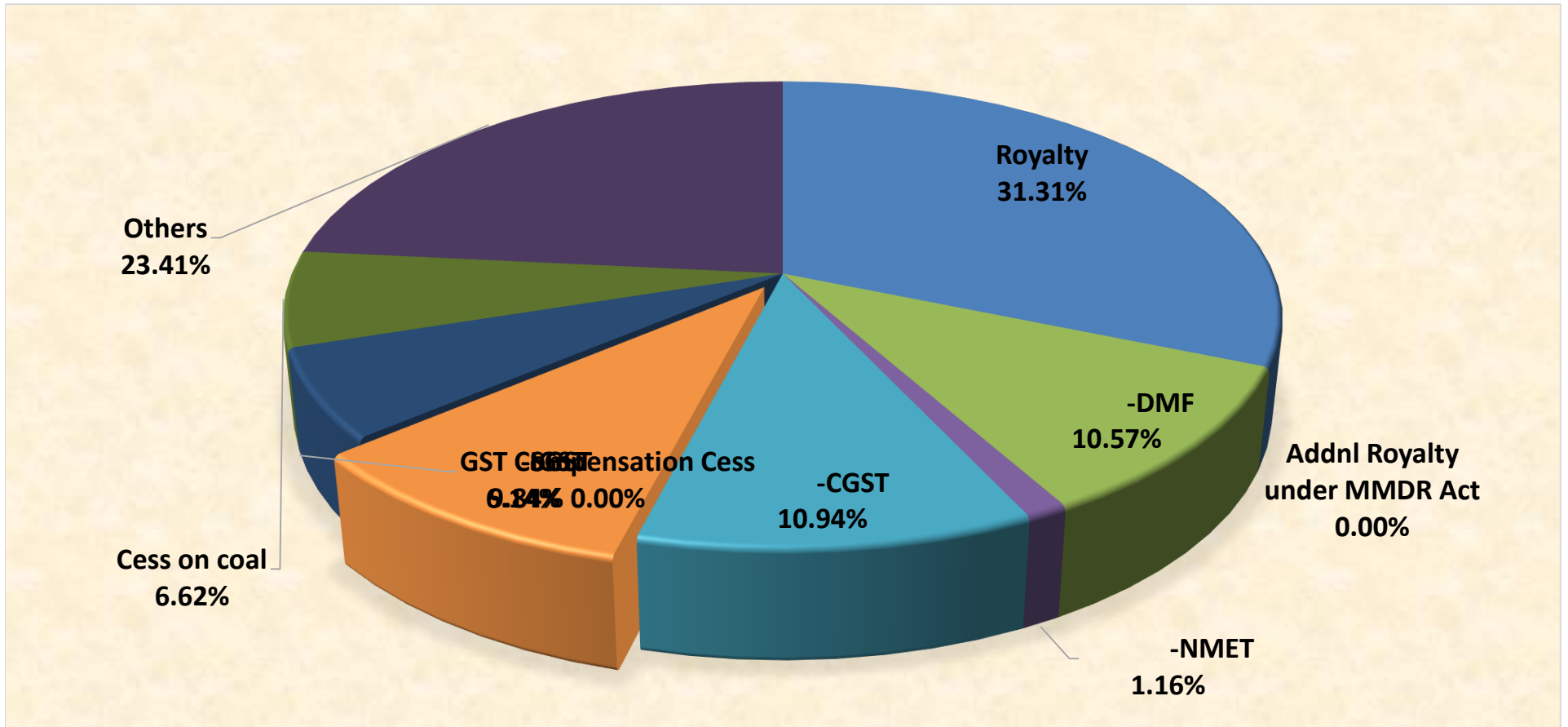
■ Apr'2025

GST Compens

Cess on

O

Share of Tax paid by CIL upto Apr'2026

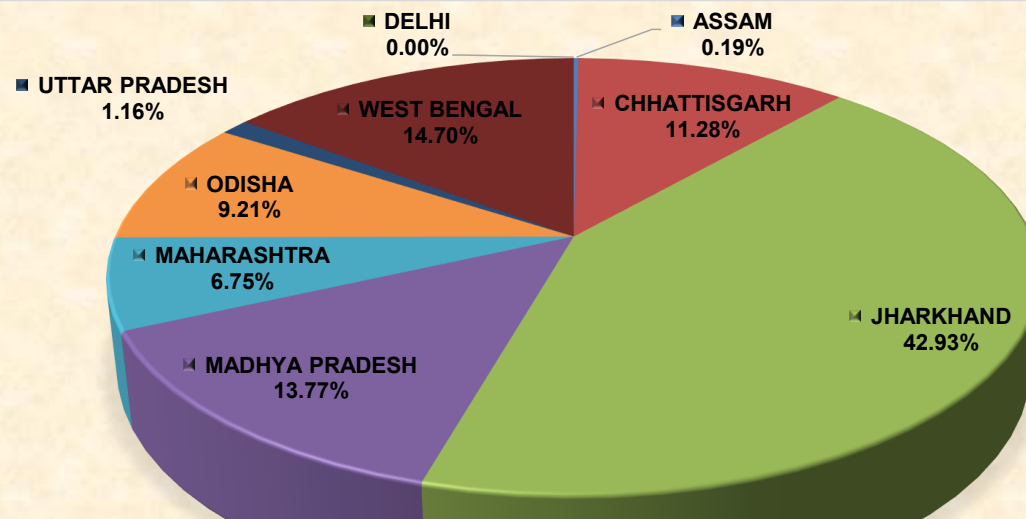


Payment made by CIL to government exchequer (Central and State) upto Apr'2026 (Prov.)

Rs. Crore

Particulars	ASSAM	CHHATTISGARH	JHARKHAND	MADHYA PRADESH	MAHARASHTRA	ODISHA	UTTAR PRADESH	WEST BENGAL	DELHI	Total
Royalty	3.05	72.62	386.66	178.26	112.88	122.14	0.61	0.00	0.00	876.22
<i>Addnl Royalty under MMDR Act</i>	-	-	-	-	-	-	-	-	-	
-DMF	0.91	61.61	98.00	55.90	33.86	45.49	0.19	0.00	0.00	295.96
-NMET	0.09	6.37	11.76	5.47	3.87	4.99	0.02	0.00	0.00	32.57
Goods and Service Tax:	0.00	0.00	0.00	0.00	0.00	0.00	0.00	0.00	0.00	
-CGST	0.60	64.40	63.20	56.75	18.46	54.09	12.39	36.18	0.00	306.07
-SGST	0.60	64.40	57.21	56.75	18.46	29.53	12.39	36.18	0.00	275.52
-IGST	0.00	2.22	12.66	1.32	1.28	0.34	0.29	153.86	0.00	171.97
GST Compensation Cess	0.00	0.00	0.00	0.00	0.00	0.00	0.00	0.00	0.00	0.00
Cess on coal	0.00	0.00	0.00	0.00	0.00	0.00	0.00	185.23	0.00	185.23
State Sales Tax / VAT	0.00	0.00	0.00	0.00	0.00	0.00	0.00	0.00	0.00	0.00
Central Sales Tax	0.00	0.00	0.00	0.00	0.00	0.00	0.00	0.00	0.00	0.00
Others	0.05	44.19	572.17	31.08	0.00	1.16	6.61	0.00	0.00	655.26
Total	5.30	315.81	1201.66	385.53	188.81	257.74	32.50	411.45	0.00	2798.80

State-wise share in tax paid in Apr'2026





CIL Modewise Offtake in Apr'26 (Prov.) in MT

Company	Rail		Road		MGR		Others		Total	
	Apr'26	Apr'25	Apr'26	Apr'25	Apr'26	Apr'25	Apr'26	Apr'25	Apr'26	Apr'25
ECL	2.99	3.07	0.48	0.25	1.12	0.85	0.00	0.00	4.59	4.17
BCCL	1.62	2.43	0.64	0.63	0.00	0.00	0.00	0.00	2.26	3.06
CCL	3.82	4.66	2.65	2.49	0.00	0.00	0.00	0.00	6.47	7.15
NCL	4.98	5.54	1.64	2.13	4.01	4.09	0.18	0.24	10.80	12.00
WCL	3.02	3.05	2.60	2.65	0.00	0.00	0.31	0.34	5.93	6.04
SECL	7.23	6.45	6.20	6.28	1.99	1.84	0.56	0.67	15.98	15.24
MCL	11.45	10.40	6.31	5.71	0.48	0.76	0.00	0.00	18.24	16.87
NEC	0.00	0.00	0.01	0.01	0.00	0.00	0.00	0.00	0.01	0.01
CIL	35.11	35.59	20.53	20.15	7.60	7.54	1.05	1.25	64.28	64.53

