

## Monthly Coal Statistics for Mar'2024 (Provisional)

### Coal Production

India's coal production increased by 8.19% to 116.63 MT from 107.80 MT during Mar'24 as compared to Mar'23. During Mar'24, CIL, SCCL and Captives/Others registered a growth of 6.08%, 4.14% & 19.99% by producing 88.58 MT, 7.30 MT & 20.75 MT of coal respectively.

*Fig. in MT*

SI No	Subs	Monthly Target	Production during Mar				Annual Target	Production upto Mar			
			FY 24	Achmt.(%)	FY 23	Growth (%) (FY24-FY23)		FY 24	Achmt.(%)	FY 23	Growth (%) (FY24-FY23)
1	ECL	6.03	6.93	<b>114.93</b>	4.56	51.97	51	47.56	<b>93.3</b>	35.02	35.81
2	BCCL	4.20	3.86	<b>91.90</b>	3.52	9.66	41	41.10	<b>100.2</b>	36.18	13.60
3	CCL	11.00	12.22	<b>111.09</b>	11.92	2.52	84	86.05	<b>102.4</b>	76.09	13.09
4	NCL	12.27	10.19	<b>83.05</b>	11.65	-12.53	135	136.15	<b>100.9</b>	131.17	3.80
5	WCL	9.28	9.04	<b>97.41</b>	9.95	-9.15	68	69.11	<b>101.6</b>	64.28	7.51
6	SECL	25.97	25.11	<b>96.69</b>	22.59	11.16	197	187.37	<b>95.1</b>	167.01	12.19
7	MCL	20.65	21.20	<b>102.66</b>	19.31	9.79	204	206.10	<b>101.0</b>	193.26	6.64
8	NEC	0.03	0.02	<b>66.67</b>	0.03	-28.57	0.2	0.20	<b>100.0</b>	0.20	0.00
<b>CIL</b>		<b>89.42</b>	<b>88.58</b>	<b>99.06</b>	<b>83.50</b>	<b>6.08</b>	<b>780.2</b>	<b>773.64</b>	<b>99.2</b>	<b>703.20</b>	<b>10.02</b>
9	SCCL	<b>6.90</b>	7.30	<b>105.80</b>	7.01	<b>4.14</b>	<b>70</b>	70.02	<b>100.0</b>	67.14	<b>4.29</b>
10	Captives/Others	<b>16.60</b>	20.75	<b>124.98</b>	17.29	<b>19.99</b>	<b>162.14</b>	153.57	<b>94.7</b>	122.85	<b>25.00</b>
<b>Grand Total</b>		<b>112.92</b>	<b>116.63</b>	<b>103.28</b>	<b>107.80</b>	<b>8.19</b>	<b>1012.34</b>	<b>997.23</b>	<b>98.5</b>	<b>893.19</b>	<b>11.65</b>

### Coking Coal Production

*Fig. in MT*

SI No	Subs	Monthly Target	Production during Mar				Annual Target	Production upto Mar			
			FY 24	Achmt.(%)	FY 23	Growth (%) (FY24-FY23)		FY 24	Achmt.(%)	FY 23	Growth (%) (FY24-FY23)
1	ECL	0.00	0.00	<b>70.0</b>	0.00		0.02	0.01	<b>60.00</b>	0.01	
2	BCCL	4.02	3.61	<b>89.8</b>	3.38	6.99	38.951	38.95	<b>100.00</b>	33.72	15.53
3	CCL	2.79	3.62	<b>129.8</b>	3.40	6.41	22.1	21.06	<b>95.29</b>	20.55	2.46
5	WCL	0.01	0.00	<b>20.0</b>	0.01	-85.71	0.06	0.04	<b>60.00</b>	0.09	-61.70
6	SECL	0.03	0.02	<b>66.7</b>	0.03		0.25	0.22	<b>86.40</b>	0.25	-12.90
<b>CIL</b>		<b>6.85</b>	<b>7.26</b>	<b>105.9</b>	<b>6.81</b>	<b>6.54</b>	<b>61.381</b>	<b>60.28</b>	<b>98.20</b>	<b>54.62</b>	<b>10.36</b>

7	Captives/Others		0.63		0.52	<b>20.85</b>		6.35		6.14	3.44
<b>Grand Total</b>		<b>6.85</b>	<b>7.88</b>	<b>115.1</b>	<b>7.33</b>	<b>7.55</b>	<b>61.381</b>	<b>66.63</b>	<b>108.54</b>	<b>60.76</b>	<b>9.66</b>

### Coal Despatch

India's coal despatch increased by 8.68% to 90.31 MT from 83.10 MT during Mar'24 as compared to Mar'23. During Mar'24, CIL, SCCL and Captives/Others registered a growth of 7.20%, 1.58% & 20.16% by despatching 68.77 MT, 6.70 MT & 14.84 MT of coal respectively.

Fig. in MT

SI No	Subs	Monthly Target	Despatch during Mar				Annual Target	Despatch upto Mar			
			FY 24	Achmt.(%)	FY 23	Growth (%) (FY24-FY23)		FY 24	Achmt.(%)	FY 23	Growth (%) (FY24-FY23)
1	ECL	5.75	5.44	<b>94.61</b>	3.91	39.13	51	43.73	85.75	35.51	23.15
2	BCCL	4.00	3.51	<b>87.75</b>	3.36	4.46	41	39.26	95.76	35.53	10.50
3	CCL	8.10	7.66	<b>94.57</b>	7.43	3.10	84	82.89	98.68	75.02	10.49
4	NCL	11.82	10.63	<b>89.93</b>	11.08	-4.06	135	137.63	101.95	133.51	3.09
5	WCL	6.80	6.64	<b>97.65</b>	6.78	-2.06	68	70.19	103.22	62.15	12.94
6	SECL	17.64	16.19	<b>91.78</b>	14.92	8.51	197	180.60	91.68	160.03	12.85
7	MCL	18.30	18.67	<b>102.02</b>	16.63	12.27	204	199.03	97.56	192.76	3.25
8	NEC	0.00	0.05		0.04	25.00	0	0.17		0.18	-7.18
	<b>CIL</b>	<b>72.41</b>	<b>68.77</b>	<b>94.97</b>	<b>64.15</b>	<b>7.20</b>	<b>780</b>	<b>753.50</b>	96.60	<b>694.69</b>	<b>8.47</b>
9	SCCL	<b>6.89</b>	6.70	<b>97.30</b>	6.60	1.58	<b>70</b>	69.86	99.80	66.69	<b>4.75</b>
10	Captives	<b>16.60</b>	14.84	<b>89.39</b>	12.35	<b>20.16</b>	<b>162.14</b>	149.24	92.04	116.13	<b>28.51</b>
<b>Grand Total</b>		<b>95.90</b>	<b>90.31</b>	<b>94.17</b>	<b>83.10</b>	<b>8.68</b>	<b>1012.14</b>	<b>972.60</b>	96.09	<b>877.51</b>	<b>10.84</b>

The Power utilities despatch has increased by 6.57 to 73.88 MT during Mar'24 as compared to 69.32 MT during Mar'23.

### Coal Despatch to Different Sectors

Fig. in MT

Sectors	Despatch during Mar				Despatch upto Mar			
	FY 24	FY 23	Growth (%) (FY24-FY23)	% share in Mar'23	FY 24	FY 23	Growth (%) (FY24-FY23)	% share upto Mar'23
Power	73.88	69.32	6.57	<b>81.80</b>	809.64	744.28	8.78	<b>83.24</b>
CPP	5.62	4.71	19.32	<b>6.22</b>	60.91	44.10	38.11	<b>6.26</b>
Steel	0.97	0.80	20.32	<b>1.07</b>	9.69	8.41	15.31	<b>1.00</b>
Cement	0.75	0.97	-22.91	<b>0.83</b>	8.86	8.95	-0.98	<b>0.91</b>
Sponge Iron	0.93	0.73	26.60	<b>1.03</b>	9.91	7.70	28.72	<b>1.02</b>
Others	8.18	6.69	22.25	<b>9.06</b>	73.59	64.08	14.85	<b>7.57</b>

<b>Total</b>	<b>90.31</b>	<b>83.10</b>	<b>8.68</b>	<b>100.00</b>	<b>972.60</b>	<b>877.51</b>	<b>10.84</b>	<b>100.00</b>
<b>Dispatch to Power</b>	<b>73.88</b>	<b>69.32</b>	<b>6.57</b>	<b>81.80</b>	<b>809.64</b>	<b>744.28</b>	<b>8.78</b>	<b>83.24</b>
<b>Dispatch to NRS</b>	<b>16.44</b>	<b>13.78</b>	<b>19.31</b>	<b>18.20</b>	<b>162.96</b>	<b>133.23</b>	<b>22.32</b>	<b>16.76</b>

### Lignite Production

Fig. in MT

SI No	Company	Production during Mar			Production upto Mar		
		FY 24	FY 23	Growth (%) (FY24-FY23)	FY 24	FY 23	Growth (%) (FY24-FY23)
1	NLCIL	2.92	2.43	20.07	23.61	23.53	0.35
2	GMDCL	0.75	0.55	36.00	6.37	7.58	-15.91
3	GIPCL	0.42	0.39	6.11	2.99	3.05	-1.83
4	RSMML	0.11	0.15	-23.13	1.10	1.21	-9.12
5	BLMCL	0.58	0.76	-22.65	5.85	5.98	-2.14
6	GHCL	0.02	0.03	-42.86	0.06	0.13	-50.40
7	VS Lignite	0.08	0.13	-34.40	0.97	1.00	-3.40
8	GSPL	0.04	0.17	-78.61	1.86	1.56	19.53
<b>Grand Total</b>		<b>4.92</b>	<b>4.60</b>	<b>6.82</b>	<b>42.82</b>	<b>44.03</b>	<b>-2.75</b>

Fig. in MT

SI No	Company	Despatch during Mar			Despatch upto Mar		
		FY 24	FY 23	Growth (%) (FY24-FY23)	FY 24	FY 23	Growth (%) (FY24-FY23)
1	NLCIL	2.42	2.50	-3.39	22.90	26.18	-12.52
2	GMDCL	0.75	0.55	36.00	6.37	7.58	-15.91
3	GIPCL	0.42	0.39	6.11	2.99	3.05	-1.83
4	RSMML	0.11	0.15	-23.13	1.10	1.21	-9.12
5	BLMCL	0.63	0.62	1.94	6.21	6.13	1.40
6	GHCL	0.01	0.01	-28.57	0.09	0.09	-1.10
7	VS Lignite	0.08	0.10	-19.39	0.92	1.01	-9.20
8	GSPL	0.25	0.19	34.76	1.84	1.58	16.52
<b>Grand Total</b>		<b>4.67</b>	<b>4.51</b>	<b>3.53</b>	<b>42.43</b>	<b>46.82</b>	<b>-9.39</b>

### Power Generation

Fig in MU

Source-wise	Mar-24	% share	Mar-23	Feb-24	Growth(%) (Mar'23- Mar'24)	Growth(%) (Feb'24-
Coal	115953	76.65	105993	107171	9.40	8.19
Lignite	3604	2.38	3438	2982	4.83	20.86
Hydro	7369	4.87	8222	6183	-10.37	19.18
Nuclear	4106	2.71	4193	3433	-2.07	19.60
Gas, Naptha & Diesel	2494	1.65	2210	2270	12.85	9.87
RES (Wind, Solar, Biomass & Others)	17759	11.74	15662	16515	13.39	7.53
<b>Total</b>	<b>151285</b>	<b>100.00</b>	<b>139718</b>	<b>138554</b>	<b>8.28</b>	<b>9.19</b>

Source: POSOCO

Coal based power generation has registered a growth of 9.40% in Mar'24 as compared to Mar'23 and overall power generation in Mar'24 has been 8.28% higher than the power generated in Mar'23. Further, on month to month basis, Coal based power generation have been increased by 8.19 % & total power generation have been increased by 9.19 in Mar'24 as compared to Feb'24.

### Electricity Prices and Clearing Volume in Indian Energy

Item	Type	During the period of Mar		
		FY 24	FY 23	Growth
Energy Prices (INR per MWh)	RTC	3910	5426.48	-27.94
	Evening	4546	6727.48	-32.42
	Day	3211	4120.34	-22.06
	Night	3746	5124.36	-26.90
	Morning	4467	6289.47	-28.98
Market Clearing Volume (MWh)	RTC	6270	6341.91	-1.13
	Evening	5821	5679.7	2.50
	Day	6166	6186.86	-0.34
	Night	6165	6547.94	-5.84
	Morning	7308	7246.03	0.86
	Total	5E+06	4718383.6	-1.13

Source: iexindia.com

**Despatch of Coal By CIL**

*Fig. in MT*

Sectors	Coal Despatch during Mar'24			Coal Despatch upto Mar'24		
	FY 24	FY 23	Growth (%) (FY24-FY23)	FY 24	FY 23	Growth (%) (FY24-FY23)
Power	55.35	52.61	5.21	619.14	585.36	5.77
CPP	4.81	4.05	18.79	51.88	38.39	35.14
Steel	0.33	0.27	21.32	3.27	2.25	45.46
Cement	0.33	0.48	-31.82	4.21	3.70	13.69
Sponge Iron	0.87	0.67	29.27	9.58	7.24	32.30
Others	7.08	6.06	16.79	65.42	57.75	13.28
<b>Total</b>	<b>68.77</b>	<b>64.15</b>	<b>7.20</b>	<b>753.50</b>	<b>694.69</b>	<b>8.47</b>

**Despatch of Coal By SCCL**

*Fig. in MT*

Sectors	Coal Despatch during Mar'24			Coal Despatch upto Mar'24		
	FY 24	FY 23	Growth (%) (FY24-FY23)	FY 24	FY 23	Growth (%) (FY24-FY23)
Power	5.95	5.54	7.44	60.79	54.77	11.00
CPP	0.14	0.39	-64.62	2.49	3.53	-29.46
Steel						
Cement	0.24	0.33	-28.18	2.84	3.43	-17.08
Sponge Iron	0.06	0.06	-3.33	0.33	0.46	-27.61
Others	0.32	0.41	-21.22	3.40	4.50	-24.46
<b>Total</b>	<b>6.70</b>	<b>6.60</b>	<b>1.58</b>	<b>69.86</b>	<b>66.69</b>	<b>4.75</b>

**Coal Despatch to Different Sectors by Captive and Others**

*Fig. in MT*

Sectors	Coal Despatch during Mar'24			Coal Despatch upto Mar'24		
	FY 24	FY 23	Growth (%) (FY24-FY23)	FY 24	FY 23	Growth (%) (FY24-FY23)
Power	12.57	11.17	12.54	129.70	104.15	24.53
CPP	0.67	0.27	147.97	6.54	2.18	199.91
Steel	0.64	0.53	19.81	6.42	6.16	4.30
Cement	0.18	0.16	16.13	1.81	1.81	-0.50
Sponge Iron						
Others	0.778	0.22	253.64	4.78	1.83	161.07
<b>Total</b>	<b>14.84</b>	<b>12.35</b>	<b>20.16</b>	<b>149.24</b>	<b>116.13</b>	<b>28.51</b>

**Top 35 Mines Production during Mar'2024 (provisional)**

Sr. No	Subsidiary	Mines	Annual Target (MT)	Prod. Upto Feb'24 (MT)	Prod. during Mar'24 (MT)	Target upto Mar'24 (MT)	Prod. Upto Mar'24 (MT)	Achievement
1	ECL	Rajmahal	15.4	10.10	1.95	15.40	12.05	78.25%
2	ECL	Sonepur Bazari	11	10.75	1.62	11.00	12.37	112.45%
3	BCCL	Amalgamated BOCF	4.8	4.73	0.46	4.80	5.19	108.13%
4	CCL	Amrapali	21	19.29	3.29	21.00	22.58	107.52%
5	CCL	Magadh	18	17.26	2.74	18.00	20.00	111.11%
6	CCL	Ashoka	7.5	8.83	1.02	7.50	9.85	131.33%
7	CCL	AKK	6.5	4.54	0.81	6.50	5.35	82.31%
8	NCL	Jayant	28.5	27.29	2.70	28.50	29.99	105.23%
9	NCL	Dudhichua	24	22.42	2.58	24.00	25.00	104.17%
10	NCL	Nigahi	22.5	21.55	0.95	22.50	22.50	100.00%
11	NCL	Amlohri	15	13.90	1.09	15.00	14.99	99.93%
12	NCL	Khadia	15	13.99	1.00	15.00	14.99	99.93%
13	NCL	Bina	10.5	9.81	0.69	10.50	10.50	100.00%
14	NCL	Block-B	7.5	5.42	0.05	7.50	5.47	72.93%
15	NCL	Krishnashila	7.5	7.01	0.49	7.50	7.50	100.00%
16	WCL	Penganga	5.4	3.85	0.95	5.40	4.80	88.89%
17	WCL	Mungoli	5.2	5.08	0.16	5.20	5.24	100.77%
18	SECL	Gevra	60	50.36	8.74	60.00	59.10	98.50%
19	SECL	Kusmunda	50	42.12	8.00	50.00	50.12	100.24%
20	SECL	Dipka	40	28.60	4.81	40.00	33.41	83.53%
21	SECL	Manikpur	5.25	5.24	0.01	5.25	5.25	100.00%
22	MCL	Bhubaneswari	30	22.68	1.55	30.00	24.23	80.77%
23	MCL	Lakhanpur	22.5	20.64	1.85	22.50	22.49	99.96%
24	MCL	Kulda	21	19.74	1.25	21.00	20.99	99.95%
25	MCL	Garjanbahal	18.2	15.87	2.32	18.20	18.19	99.95%
26	MCL	Ananta	16	18.03	1.96	16.00	19.99	124.94%
27	MCL	Lingaraj	15	15.68	1.85	15.00	17.53	116.87%
28	MCL	Kaniha	13	10.62	1.19	13.00	11.81	90.85%
29	MCL	Hingula	12	11.76	1.29	12.00	13.05	108.75%
30	MCL	Bharatpur	10.24	9.66	1.46	10.24	11.12	108.59%
31	MCL	Belpahar	9	7.92	1.07	9.00	8.99	99.89%
32	MCL	Balram	8	6.99	0.74	8.00	7.73	96.63%
33	MCL	Siarmal	8	5.73	1.51	8.00	7.24	90.50%
34	MCL	Samaleswari	8	6.97	1.09	8.00	8.06	100.75%
35	MCL	Jagannath	7.5	6.7	0.84	7.50	7.5	100.00%
<b>Total</b>			<b>578.99</b>	<b>511.09</b>	<b>64.08</b>	<b>578.99</b>	<b>575.17</b>	<b>99.34%</b>

Particulars	No. of mines
Mines produced => 100%	19
Mines produced => 80% , but less than 100%	14
Mines produced => 50% , but less than 80%	2
Mines produced less than 50%	0



**Top 35 Mines OBR during Mar'2024 (provisional)**

Sr. No	Subsidiary	Mines	Annual Target (M.Cum)	OBR. Upto Feb'24 (M.Cum)	OBR. during Mar'24 (M.Cum)	Target upto Mar'24 (M.Cum)	OBR. Upto Mar'24 (M.Cum)	Achievement
1	ECL	Rajmahal	25	25.69	3.69	25.00	29.38	117.52%
2	ECL	Sonepur Bazari	60.5	77.12	8.82	60.50	85.94	142.05%
3	BCCL	Amalgamated BOCP	14.3	9.06	0.86	14.30	9.92	69.37%
4	CCL	Amrapali	24	26.06	2.54	24.00	28.60	119.17%
5	CCL	Magadh	22	16.62	1.76	22.00	18.38	83.55%
6	CCL	Ashoka	10	10.37	0.66	10.00	11.03	110.25%
7	CCL	AKK	7.5	5.81	0.48	7.50	6.29	83.87%
8	NCL	Jayant	60.17	73.07	7.12	60.17	80.19	133.27%
9	NCL	Dudhichua	92.84	83.32	7.84	92.84	91.16	98.19%
10	NCL	Nigahi	74.94	81.27	8.47	74.94	89.74	119.75%
11	NCL	Amlohri	59.15	65.51	7.89	59.15	73.40	124.09%
12	NCL	Khadia	63.25	64.94	5.59	63.25	70.53	111.51%
13	NCL	Bina	51.02	47.53	4.67	51.02	52.20	102.31%
14	NCL	Krishnashila	24.51	22.52	1.93	24.51	24.45	99.76%
15	NCL	Block-B	21.45	17.81	1.63	21.45	19.44	90.63%
16	WCL	Penganga	17.85	19.34	1.86	17.85	21.20	118.77%
17	WCL	Mungoli	29	29.34	2.65	29.00	31.99	110.31%
18	SECL	Gevra	75	76.35	6.07	75.00	82.42	109.89%
19	SECL	Kusmunda	60	45.43	3.12	60.00	48.55	80.92%
20	SECL	Dipka	40	37.16	2.64	40.00	39.80	99.50%
21	SECL	Manikpur	13	10.55	1.18	13.00	11.73	90.23%
22	MCL	Bhubaneswari	32.5	26.95	4.11	32.50	31.06	95.57%
23	MCL	Lakhanpur	60.5	56.97	5.26	60.50	62.23	102.86%
24	MCL	Kulda	11.5	11.17	1.38	11.50	12.55	109.13%
25	MCL	Garjanbahal	17.99	14.59	1.73	17.99	16.32	90.72%
26	MCL	Ananta	33	30.57	3.01	33.00	33.58	101.76%
27	MCL	Lingaraj	12.99	11.67	1.39	12.99	13.06	100.54%
28	MCL	Kaniha	7.5	6.59	0.74	7.50	7.33	97.73%
29	MCL	Hingula	16.8	15.37	2.90	16.80	18.27	108.75%
30	MCL	Bharatpur	15.49	13.15	1.39	15.49	14.54	93.87%
31	MCL	Belpahar	5	4.73	0.03	5.00	4.76	95.20%
32	MCL	Siarmal	9	7.61	1.28	9.00	8.89	98.78%
33	MCL	Balram	17.99	15.40	1.46	17.99	16.86	93.72%
34	MCL	Samaleswari	16.8	12.64	2.90	16.80	15.54	92.50%
35	MCL	Jagannath	8.49	7.6	0.87	8.49	8.5	100.12%
<b>Total</b>			<b>1111.03</b>	<b>1079.91</b>	<b>109.92</b>	<b>1111.03</b>	<b>1189.83</b>	<b>107.09%</b>

Particulars	No. of mines
Mines produced => 100%	18
Mines produced => 80% , but less than 100%	16
Mines produced => 50% , but less than 80%	1
Mines produced less than 50%	0

**Coal Production in mines of all Subsidiaries of CIL (provisional data)**

*Fig. in MT*

SI No	Subs	Types of Mines	No of Mines	Annual Target (MT)	During Mar			Upto Mar		
					FY 24	FY 23	Growth (%) M-O-M	FY 24	FY 23	Growth (%) Y-O-Y
1	ECL	Top 35	2	26.40	3.57	2.22	60.81	24.42	17.38	40.51
		Others	4	9.00	0.95	0.88	7.95	7.95	6.80	16.91
		Top 84	6	35.40	4.52	3.10	45.81	32.37	24.18	33.87
		Rest	72	15.60	2.41	1.46	65.07	15.19	10.84	40.13
	<b>Overall ECL</b>	<b>78</b>	<b>51.00</b>	<b>6.93</b>	<b>4.56</b>	<b>51.97</b>	<b>47.56</b>	<b>35.02</b>	<b>35.81</b>	
2	BCCL	Top 35	1	5.00	0.46	0.45	1.32	5.19	4.68	10.90
		Others	8	22.75	1.16	2.02	-42.57	21.52	22.37	-3.80
		Top 84	9	27.75	1.62	2.47	-34.52	26.71	27.05	-1.26
		Rest	23	18.25	2.70	1.50	80.00	19.58	13.81	41.78
	<b>Overall BCCL</b>	<b>31</b>	<b>41.00</b>	<b>3.86</b>	<b>3.52</b>	<b>9.66</b>	<b>41.10</b>	<b>36.18</b>	<b>13.60</b>	
3	CCL	Top 35	4	53.00	7.86	7.75	1.42	57.78	50.62	14.15
		Others	8	16.40	2.14	1.89	13.42	14.12	13.69	3.16
		Top 84	12	69.40	10.00	9.64	3.77	71.90	64.30	11.81
		Rest	25	14.60	2.22	2.29	-2.76	14.15	11.79	20.06
	<b>Overall CCL</b>	<b>37</b>	<b>84.00</b>	<b>12.22</b>	<b>11.92</b>	<b>2.52</b>	<b>86.05</b>	<b>76.09</b>	<b>13.09</b>	
4	MCL	Top 35	14	198.44	19.97	18.97	5.27	198.92	187.37	6.16
		Others	1	4.50	0.31	0.24	30.25	4.49	4.50	-0.22
		Top 84	15	202.94	20.28	19.21	5.58	203.41	191.87	6.01
		Rest	4	1.06	0.92	0.10	801.96	2.69	1.39	93.53
	<b>Overall MCL</b>	<b>19</b>	<b>204.00</b>	<b>21.20</b>	<b>19.31</b>	<b>9.79</b>	<b>206.10</b>	<b>193.26</b>	<b>6.64</b>	
5	NCL	Top 35	8	129.50	9.55	11.03	-13.42	130.94	125.68	4.19
		Others	1	2.50	0.44	0.34	29.41	3.64	3.25	12.00
		Top 84	9	132.00	9.99	11.37	-12.14	134.58	128.93	4.38
		Rest	1	1.00	0.20	0.28	-28.57	1.57	2.24	-29.91
	<b>Overall NCL</b>	<b>10</b>	<b>133.00</b>	<b>10.19</b>	<b>11.65</b>	<b>-12.53</b>	<b>136.15</b>	<b>131.17</b>	<b>3.80</b>	
6	SECL	Top 35	4	155.25	21.56	19.19	12.35	147.88	132.92	11.25
		Others	11	28.70	2.20	1.91	15.49	23.96	19.05	25.77
		Top 84	15	183.95	23.76	21.10	12.63	171.84	151.97	13.07
		Rest	52	16.05	1.35	1.50	-9.70	15.53	15.04	3.26
	<b>Overall SECL</b>	<b>67</b>	<b>200.00</b>	<b>25.11</b>	<b>22.59</b>	<b>11.16</b>	<b>187.37</b>	<b>167.01</b>	<b>12.19</b>	
7	WCL	Top 35	2	10.60	1.11	2.05	-45.85	10.04	10.01	0.30
		Others	16	41.24	5.60	6.28	-10.83	43.05	42.50	1.29
		Top 84	18	51.84	6.71	8.33	-19.45	53.09	52.51	1.10
		Rest	35	15.16	2.33	1.62	43.83	16.02	11.77	36.11
	<b>Overall WCL</b>	<b>53</b>	<b>67.00</b>	<b>9.04</b>	<b>9.95</b>	<b>-9.15</b>	<b>69.11</b>	<b>64.28</b>	<b>7.51</b>	
8	CIL	Top 35	35	578.19	64.08	61.66	3.92	575.17	528.66	8.80
		Others	49	120.59	12.49	13.31	-6.18	114.24	107.66	6.11
		Top 84	84	698.78	76.57	74.97	2.13	689.41	636.31	8.34
		Rest of mines	211	81.22	12.01	8.53	40.89	84.23	66.89	25.93
	<b>Overall CIL</b>	<b>295</b>	<b>780.00</b>	<b>88.58</b>	<b>83.50</b>	<b>6.08</b>	<b>773.64</b>	<b>703.20</b>	<b>10.02</b>	

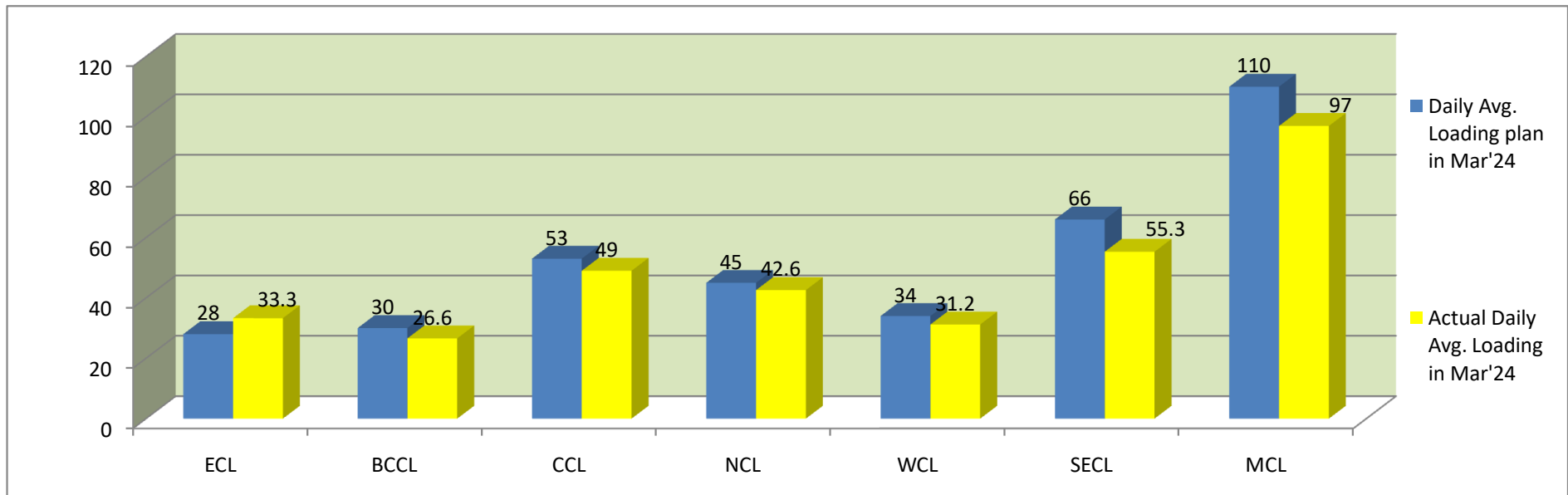
**Top 84 = Top 35 + others mines including in top 84 mines**

**Rest of Mines = other than top 84**

**Overall Mines = Top 84 + rest of mines**

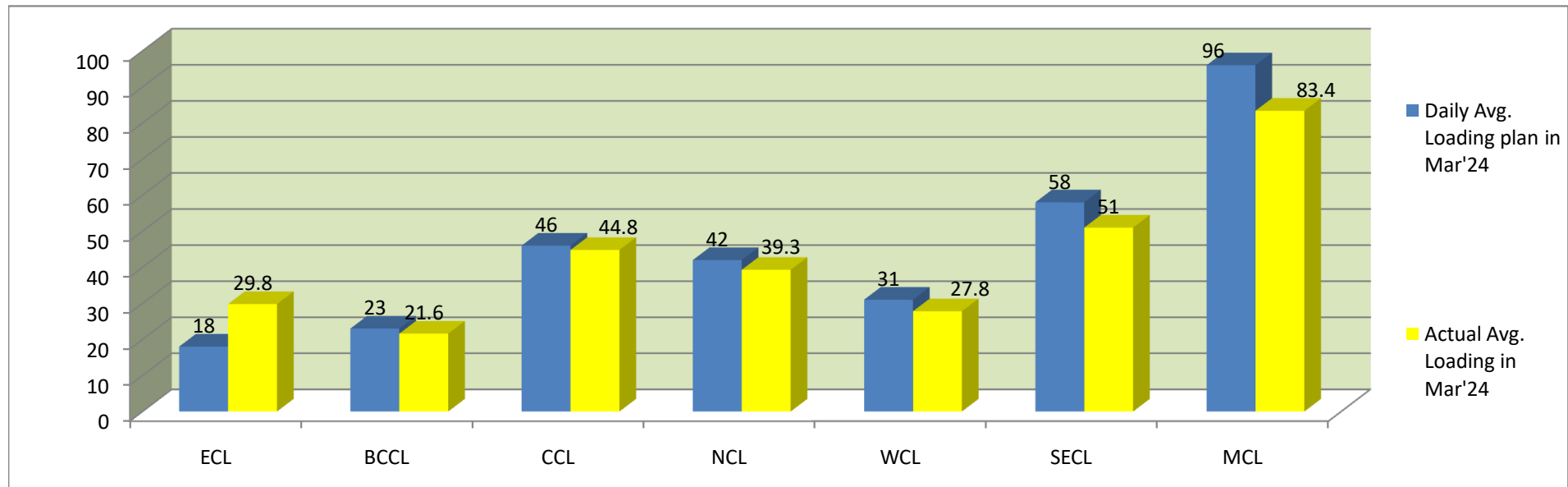
**Company-wise movement of rakes for all sectors per day during FY 2023-24 (Prov.)**

Company	Daily Avg. Loading plan in Mar'24	Actual Daily Avg. Loading in Mar'24	Achievemnt (%)	Actual Daily Avg. Loading in Mar'23	Growth% (Mar'23 to Mar'24)	Daily Avg. Loading plan for 2023-24	Actual Daily Avg. Loading for 2023-24	Achievemnt (%)	Actual Daily Avg. Loading for 2022-23	Growth% (FY 22-23 to FY23-24)
ECL	28	33.3	118.93	24.3	37.04	23.5	22.6	96.17	20.4	10.78
BCCL	30	26.6	88.67	26.3	1.14	26.3	23.9	90.87	22.2	7.66
CCL	53	49	92.45	46.9	4.48	46	42.8	93.04	39.2	9.18
NCL	45	42.6	94.67	36.4	17.03	43.9	41.2	93.85	36.3	13.50
WCL	34	31.2	91.76	30.9	0.97	28	27.3	97.50	23.5	16.17
SECL	66	55.3	83.79	45.5	21.54	58	48.6	83.79	44.4	9.46
MCL	110	97	88.18	85.5	13.45	103.9	85.3	82.10	87.6	-2.63
<b>Total</b>	<b>366.0</b>	<b>335.0</b>	<b>91.53</b>	<b>295.8</b>	<b>13.25</b>	<b>329.6</b>	<b>291.7</b>	<b>88.50</b>	<b>273.6</b>	<b>6.62</b>



**Company-wise movement of rakes for power sector per day during FY 2023-24 (Prov.)**

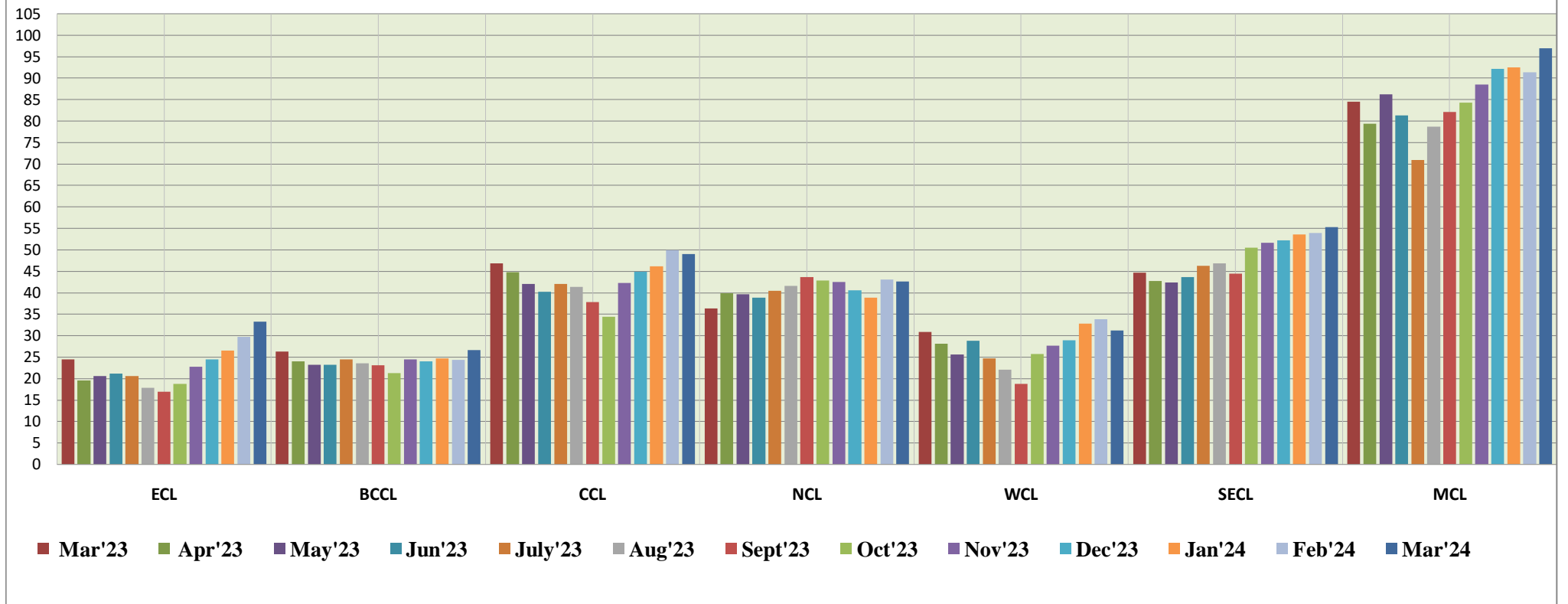
Company	Daily Avg. Loading plan in Mar'24	Actual Avg. Loading in Mar'24	Achievemnt (%)	Actual Avg. Loading in Mar'23	Growth%( Mar'23 to Mar'24)	Daily Avg. Loading plan for 2023-24	Actual Avg. Loading for 2023-24	Achievemnt (%)	Actual Avg. Loading for 2022-23	Growth% (FY 22-23 to FY23-24)
ECL	18	29.8	165.56	19.8	50.51	16.8	19.4	115.48	17.8	8.99
BCCL	23	21.6	93.91	21.6	0.00	21.5	19.9	92.56	18.3	8.74
CCL	46	44.8	97.39	44.9	-0.22	41.3	40.5	98.06	37.4	8.29
NCL	42	39.3	93.57	34.6	13.58	40.9	39.1	95.60	35.8	9.22
WCL	31	27.8	89.68	30	-7.33	25.9	26.1	100.77	23.3	12.02
SECL	58	51	87.93	44.5	14.61	53.7	46.2	86.03	43.7	5.72
MCL	96	83.4	86.88	79.6	4.77	94.6	76.8	81.18	83.1	-7.58
<b>Total</b>	<b>314.00</b>	<b>297.70</b>	<b>94.81</b>	<b>275.00</b>	<b>8.25</b>	<b>294.7</b>	<b>268.0</b>	<b>90.94</b>	<b>259.4</b>	<b>3.32</b>



**Company-wise movement of rates for all sectors per day during Mar'23 to Mar'24(Provisional)**

COMPANY	Mar'23	Apr'23	May'23	Jun'23	July'23	Aug'23	Sept'23	Oct'23	Nov'23	Dec'23	Jan'24	Feb'24	Mar'24
ECL	24.4	19.5	20.6	21.1	20.6	17.8	16.9	18.7	22.7	24.4	26.5	29.7	33.3
BCCL	26.3	24	23.2	23.2	24.5	23.5	23.1	21.3	24.4	24	24.7	24.3	26.6
CCL	46.8	44.8	42	40.2	42	41.4	37.8	34.4	42.3	44.9	46.2	49.9	49
NCL	36.3	39.9	39.7	38.9	40.5	41.6	43.6	42.9	42.5	40.6	38.9	43.1	42.6
WCL	30.9	28.1	25.6	28.8	24.7	22.1	18.7	25.7	27.7	28.9	32.8	33.8	31.2
SECL	44.7	42.7	42.4	43.6	46.3	46.9	44.5	50.5	51.7	52.2	53.6	53.9	55.3
MCL	84.6	79.4	86.3	81.3	71	78.7	82.1	84.3	88.6	92.2	92.5	91.4	97
<b>Total</b>	<b>294</b>	<b>278.4</b>	<b>279.8</b>	<b>277.1</b>	<b>269.6</b>	<b>272</b>	<b>266.70</b>	<b>277.80</b>	<b>299.90</b>	<b>307.20</b>	<b>315.20</b>	<b>326.10</b>	<b>335.00</b>

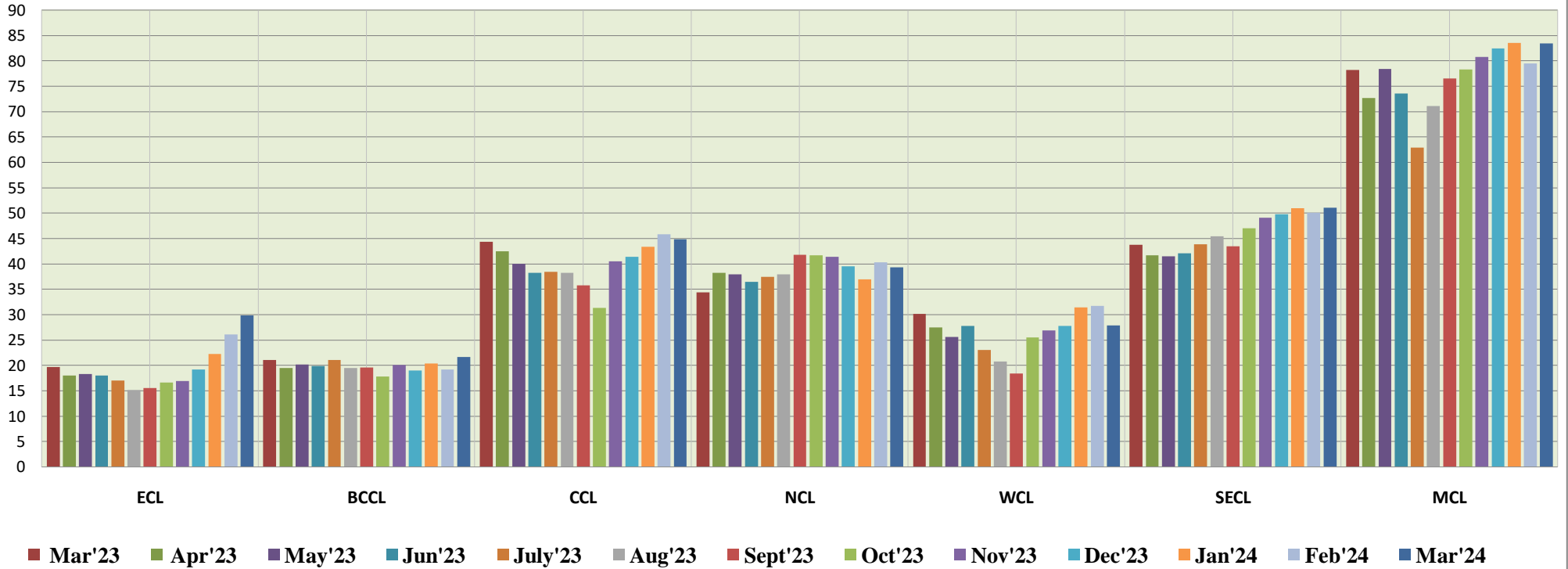
**Actual Rates Loading Status (All Sectors)**



**Company-wise movement of rakes for power sector per day during Mar'23 to Mar'24(Provisional)**

COMPANY	Mar'23	Apr'23	May'23	Jun'23	July'23	Aug'23	Sept'23	Oct'23	Nov'23	Dec'23	Jan'24	Feb'24	Mar'24
ECL	19.6	18	18.3	18	17	15.1	15.5	16.6	16.9	19.1	22.2	26.1	29.8
BCCL	21	19.4	20.1	19.8	21	19.4	19.5	17.8	20	18.9	20.3	19.1	21.6
CCL	44.3	42.4	40	38.2	38.4	38.2	35.7	31.3	40.5	41.3	43.3	45.8	44.8
NCL	34.3	38.2	37.9	36.4	37.4	37.9	41.7	41.6	41.3	39.5	36.9	40.3	39.3
WCL	30.1	27.4	25.6	27.7	23	20.7	18.4	25.5	26.8	27.7	31.4	31.7	27.8
SECL	43.7	41.6	41.4	42	43.8	45.4	43.4	47	49	49.7	50.9	50	51
MCL	78.2	72.6	78.4	73.5	62.9	71.1	76.5	78.3	80.7	82.4	83.5	79.4	83.4
<b>Total</b>	<b>271.2</b>	<b>259.6</b>	<b>261.7</b>	<b>255.6</b>	<b>243.5</b>	<b>247.8</b>	<b>250.7</b>	<b>258.10</b>	<b>275.20</b>	<b>278.60</b>	<b>288.50</b>	<b>292.40</b>	<b>297.70</b>

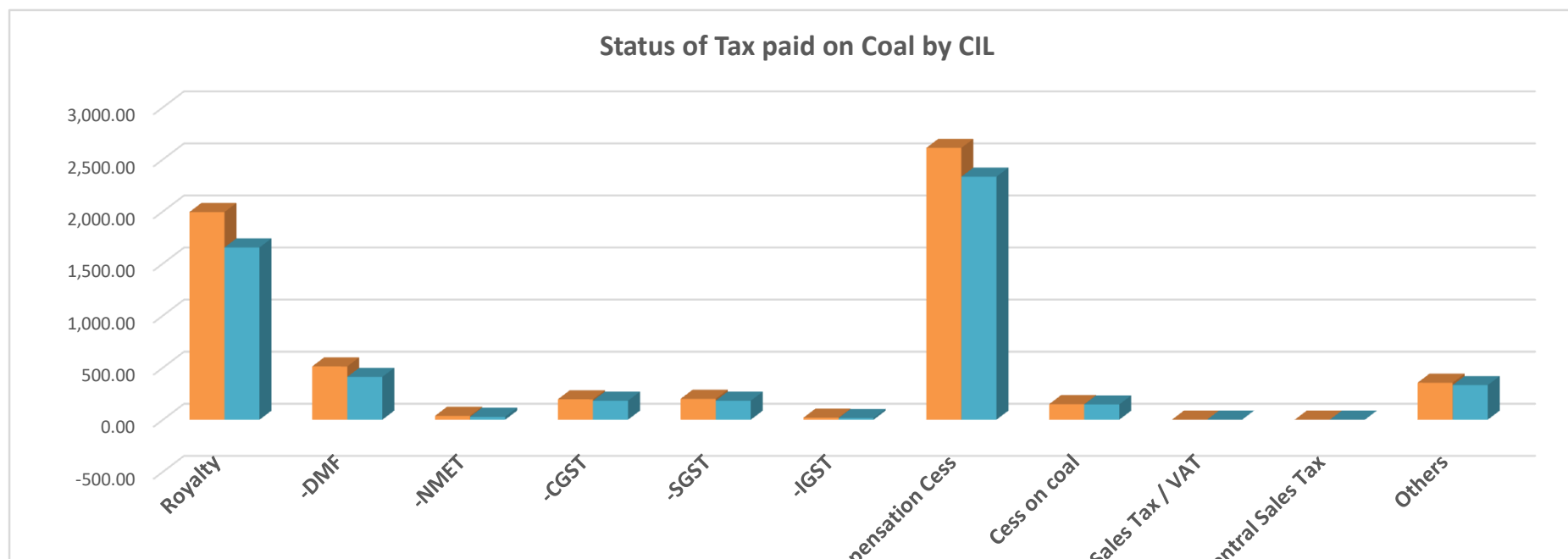
**Actual Rakes Loading Status (Power Sectors)**



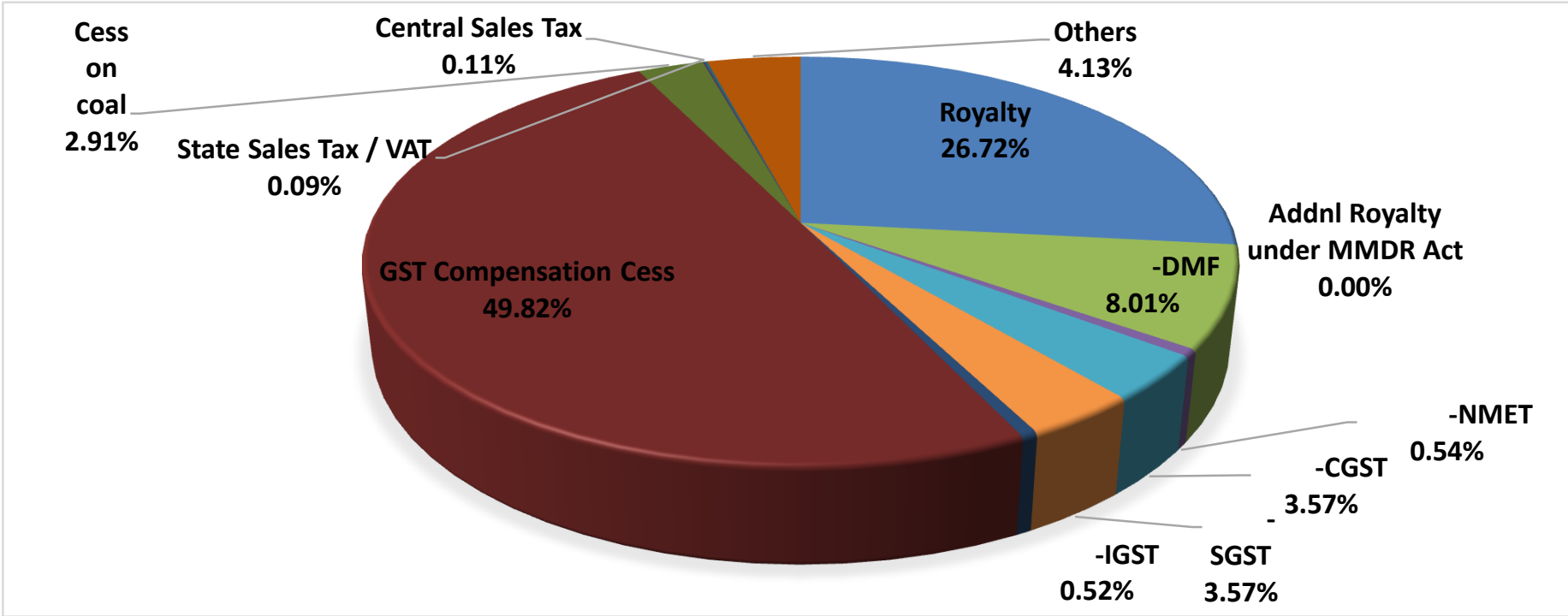
**Payment made by CIL to government exchequer (Central and State) upto the period of Mar'2024 (FY 2023-24) (Prov.)**

Particulars	Total levies paid ( Rs. Cr.)		Total levies paid ( Rs. Cr.)		Progressive Growth(%)
	Mar'2024	Mar'2023	Upto Mar'2024	Upto Mar'2023	
<b>Royalty</b>	1,993.52	1653.54	16,066.69	15,401.30	4.32%
<b>Addnl Royalty under MMDR Act</b>				-	
-DMF	511.33	410.86	4,817.55	4,535.46	6.22%
-NMET	36.47	27.63	326.51	305.99	6.71%
<b>Goods and Service Tax:</b>				-	
-CGST	195.34	182	2,144.16	2,092.35	2.48%
-SGST	200.34	182	2,149.16	2,094.75	2.60%
-IGST	19.18	15.56	312.55	483.29	-35.33%
<b>GST Compensation Cess</b>	2,609.77	2333.1	29,962.63	27,599.47	8.56%
<b>Cess on coal</b>	148.58	146.3	1,753.09	1,774.10	-1.18%
<b>State Sales Tax / VAT</b>	-0.09	0	53.46	0.1	
<b>Central Sales Tax</b>	-0.09	0	68.4	-	
<b>Others</b>	354.83	331.6	2,486.11	2,237.30	11.12%
<b>Total</b>	<b>6,069.18</b>	<b>5282.59</b>	<b>60,140.31</b>	<b>56524.11</b>	<b>6.40%</b>

**Note: This exchequer report is on cash payment basis.**



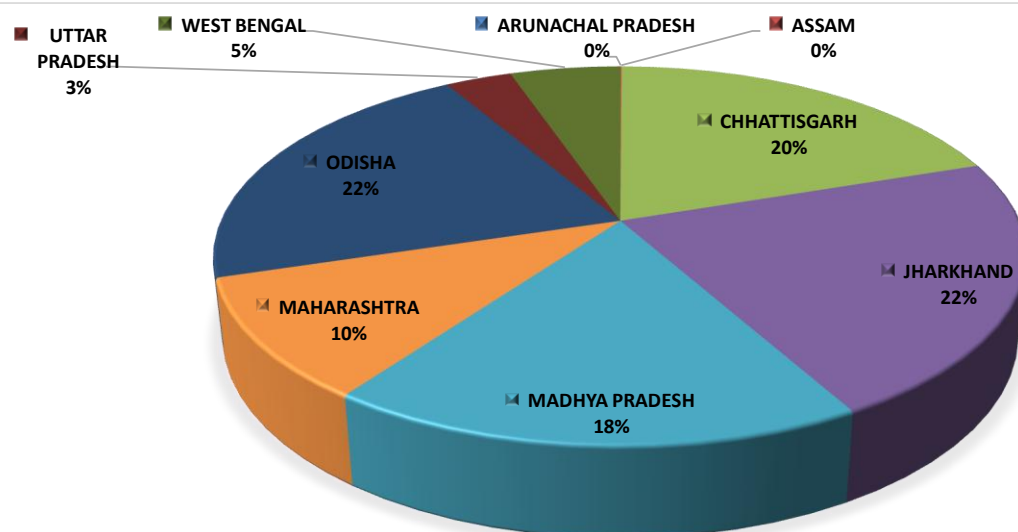
■ Mar'2024      ■ Mar'2023  
 GST Com,      State -      Ce





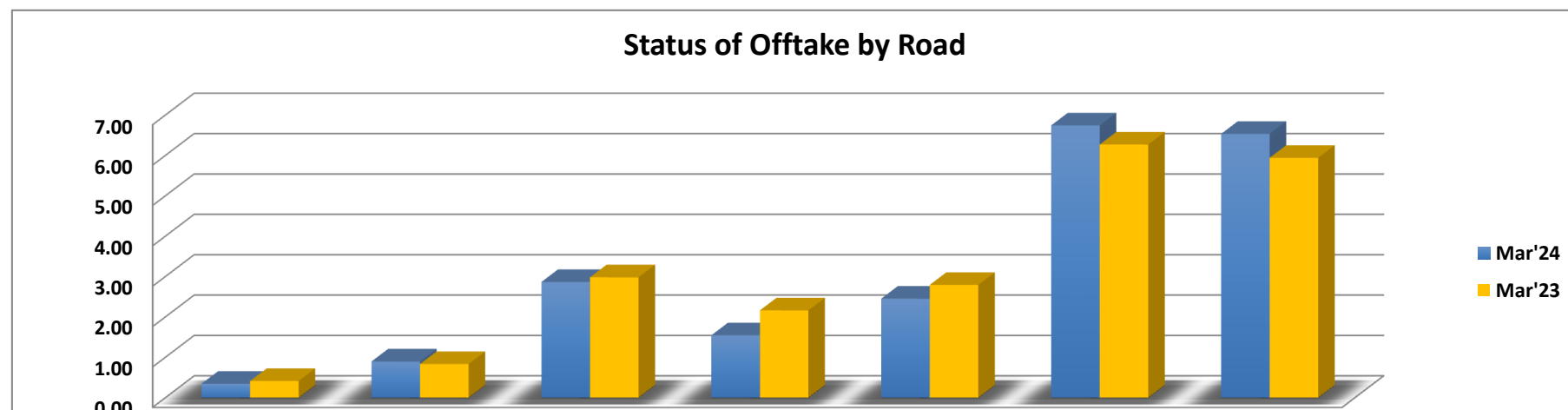
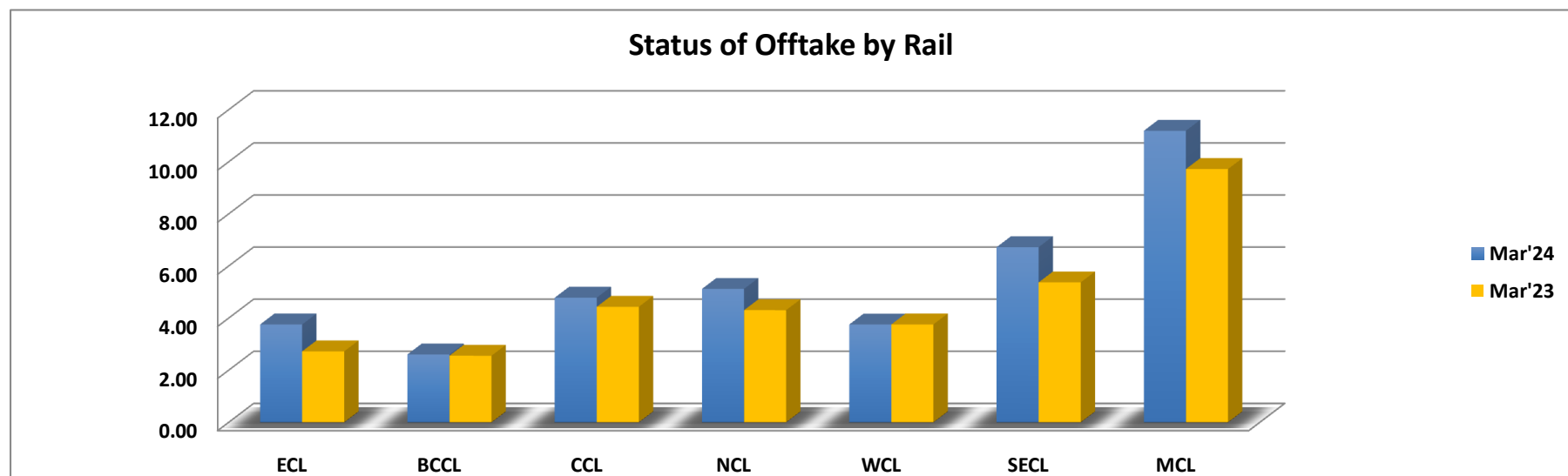
Payment made by CIL to government exchequer (Central and State) upto the period of March'2024 (FY 2023-24) (Prov.)										
	ARUNACHAL PRADESH	ASSAM	CHHATTISGARH	JHARKHAND	MADHYA PRADESH	MAHARASHTRA	ODISHA	UTTAR PRADESH	WEST BENGAL	Total
<b>Royalty</b>	0.00	16.07	2843.84	4316.52	2850.91	2242.93	3173.53	606.12	16.79	16066.71
<b>Addnl Royalty under MMDR Act</b>	-	-	-	-	-	-	-	-	-	-
-DMF	0.00	4.82	874.25	1308.08	853.51	661.80	929.85	180.34	4.90	4817.55
-NMET	0.00	0.32	60.46	89.42	57.55	44.12	61.82	12.49	0.33	326.51
<b>Goods and Service Tax:</b>	0.00	0.00	0.00	0.00	0.00	0.00	0.00	0.00	0.00	0.00
-CGST	0.04	2.66	411.95	620.27	364.13	259.00	389.47	76.73	19.95	2144.20
-SGST	0.04	2.66	411.95	625.26	364.13	259.00	389.47	76.73	19.95	2149.19
-IGST	0.08	0.00	14.15	41.86	11.06	7.01	1.90	4.54	231.95	312.55
<b>GST Compensation Cess</b>	0.44	6.09	6708.67	5459.86	5229.76	2715.03	7879.50	850.18	1113.10	29962.63
<b>Cess on coal</b>	0.00	0.00	0.00	0.00	0.00	0.00	0.00	0.00	1753.10	1753.10
<b>State Sales Tax / VAT</b>	0.00	0.00	0.00	53.55	-0.09	0.00	0.00	0.00	0.00	53.46
<b>Central Sales Tax</b>	0.00	0.00	0.00	68.49	-0.09	0.00	0.00	0.00	0.00	68.40
<b>Others</b>	0.00	1.03	565.52	685.24	1135.09	0.00	10.66	88.56	0.02	2486.12
<b>Total</b>	0.60	33.65	11890.79	13268.55	10865.96	6188.89	12836.20	1895.69	3160.09	60140.42

State-wise share in tax paid in FY 2023-24





CIL Modewise Offtake in Mar'24 (Prov.) in MT								
Company	Rail		Road		MGR		Total	
	Mar'24	Mar'23	Mar'24	Mar'23	Mar'24	Mar'23	Mar'24	Mar'23
ECL	3.76	2.73	0.35	0.42	1.31	0.75	5.42	3.89
BCCL	2.61	2.56	0.90	0.84	0.00	0.00	3.51	3.40
CCL	4.79	4.44	2.87	2.99	0.00	0.00	7.66	7.42
NCL	5.13	4.31	1.55	2.17	3.96	4.35	10.63	11.08
WCL	3.76	3.76	2.46	2.80	0.05	0.00	6.65	6.79
SECL	6.73	5.38	6.75	6.27	2.12	2.69	16.19	14.94
MCL	11.20	9.73	6.54	5.95	0.92	0.93	18.65	16.60
NEC	0.02	0.01	0.03	0.03	0.00	0.00	0.05	0.04
<b>CIL</b>	<b>37.99</b>	<b>32.91</b>	<b>21.43</b>	<b>21.45</b>	<b>8.35</b>	<b>8.72</b>	<b>68.76</b>	<b>64.15</b>



ECL

BCCL

CCL

NCL

WCL

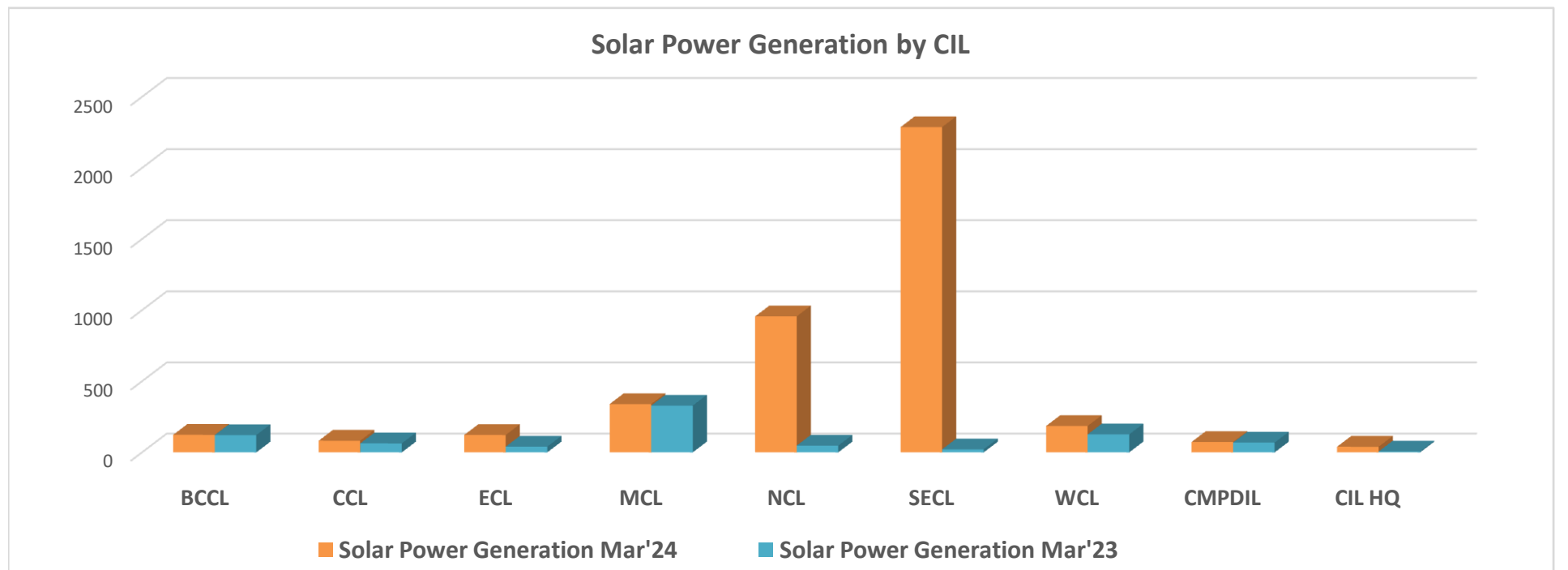
SECL

MCL

*Solar power generation for the month of March'2024 vis-à-vis March'2023*

( In MWh)

SL.No.	Subsidiary	Solar Power Generation Mar'24	Solar Power Generation Mar'23	Growth (%)	Progressive Solar Power Generation From Apr' 23 to Mar'24	Progressive Solar Power Generation From Apr' 22 to Mar'23	Growth (%)
1	BCCL	123	122	1	1313	827	59
2	CCL	82.023	63	30	609	819	-26
3	ECL	122.074	40.175	204	848	712	19
4	MCL	339.784	329	3	3381	2066	64
5	NCL	956.12	47	1917	2478	307	707
6	SECL	2287.44	21.5	10539	8804	105	8315
7	WCL	185.507	126	47	1660	1151	44
8	CMPDIL	73.012	68.979	6	806	788	2
9	CIL HQ	39.581	6	557	320	72	347
<b>TOTAL</b>		<b>4209</b>	<b>824</b>	<b>411</b>	<b>20219</b>	<b>6846</b>	<b>195</b>





### Solar Power Generation share in FY 2023-24

