

## Monthly Coal Statistics for Nov'2022(Provisional)

### Coal Production

India's coal production increased by 11.66% to 75.87 MT from 67.94 MT during Nov'22 as compared to Nov'21. During Nov'22, CIL registered a growth of 12.82%, whereas SCCL and Captives/ Others registered a growth of 7.84% & 6.87% respectively.

### Coal Production

*Fig. in MT*

SI No	Subs	Monthly Target	Production during Nov 22				Production upto Nov 22		
			FY 23	Achmt.(%)	FY 22	Growth (%) (FY23-FY22)	FY 23	FY 22	Growth (%) (FY23-FY22)
1	ECL	3.30	2.75	83.33	2.21	24.43	20.61	18.34	12.38
2	BCCL	3.30	3.25	98.48	2.56	26.95	22.37	17.23	29.83
3	CCL	6.60	6.51	98.64	5.74	13.41	42.13	36.37	15.84
4	NCL	10.80	11.07	102.50	10.83	2.22	85.77	75.11	14.19
5	WCL	6.00	5.92	98.67	5.36	10.45	31.74	28.39	11.80
6	SECL	15.00	14.61	97.40	12.23	19.46	89.85	77.68	15.67
7	MCL	15.60	16.58	106.28	14.87	11.50	120.05	100.28	19.71
8	NEC		0.02				0.10		
<b>CIL</b>		<b>60.60</b>	<b>60.70</b>	<b>100.16</b>	<b>53.80</b>	<b>12.82</b>	<b>412.63</b>	<b>353.41</b>	<b>16.76</b>
9	SCCL	<b>6.51</b>	6.05	92.92	5.61	7.84	40.50	40.86	-0.90
10	Captives/Others		9.12		8.53	6.87	71.07	53.27	33.41
<b>Grand Total</b>		<b>67.11</b>	<b>75.87</b>	<b>113.04</b>	<b>67.94</b>	<b>11.66</b>	<b>524.20</b>	<b>447.54</b>	<b>17.13</b>

### Coking Coal Production

*Fig. in MT*

SI No	Subs	Monthly Target	Production during Nov'22			Production upto Nov'22		
			FY 23	FY 22	Growth (%) (FY23-FY22)	FY 23	FY 22	Growth (%) (FY23-FY22)
1	ECL	0.00	0.00	0.00		0.01	0.01	-61.54
2	BCCL	2.49	3.10	2.45	26.51	20.97	16.26	28.98
3	CCL	1.56	1.82	1.20	51.37	10.88	8.53	27.57
5	WCL	0.01	0.01	0.01	-27.27	0.06	0.11	-40.74
6	SECL	0.02	0.02	0.02	5.26	0.16	0.14	11.11
<b>CIL</b>		<b>4.09</b>	<b>4.95</b>	<b>3.68</b>	<b>34.37</b>	<b>32.08</b>	<b>25.05</b>	<b>28.05</b>
7	Captives/Others		0.62	0.47	31.63	3.85	3.15	22.28
<b>Grand Total</b>		<b>4.09</b>	<b>5.57</b>	<b>4.15</b>	<b>34.06</b>	<b>35.93</b>	<b>28.20</b>	<b>27.41</b>

### Coal Despatch

India's coal despatch increased by 4.41% to 74.32 MT from 71.18 MT during Nov'22 as compared to Nov'21. During Nov'22, CIL, SCCL and Captives/Others registered a growth of 4.73%, 3.14% & 3.20% by despatching 59.38 MT, 5.94 MT & 8.99 MT respectively.

### Coal Despatch

Fig. in MT

SI No	Subs	Monthly Target	Despatch during Nov'22				Despatch upto Nov'22		
			FY 23	Achmt.(%)	FY 22	Growth (%) (FY23-FY22)	FY 23	FY 22	Growth (%) (FY23-FY22)
1	ECL	3.00	2.78	92.67	2.64	5.30	21.96	23.60	-6.95
2	BCCL	3.00	3.10	103.33	2.42	28.10	22.87	20.34	12.44
3	CCL	6.45	6.56	101.71	5.64	16.31	47.66	45.20	5.44
4	NCL	10.80	11.35	105.09	11.53	-1.56	88.96	80.46	10.56
5	WCL	6.00	5.27	87.83	5.68	-7.22	37.03	39.88	-7.15
6	SECL	14.25	13.88	97.40	13.36	3.89	99.83	98.74	1.10
7	MCL	16.50	16.43	99.58	15.42	6.55	126.65	112.86	12.22
8	NEC		0.01				0.07		
	<b>CIL</b>	<b>60.00</b>	<b>59.38</b>	<b>98.97</b>	<b>56.70</b>	<b>4.73</b>	<b>445.05</b>	<b>421.07</b>	<b>5.70</b>
9	SCCL	<b>6.31</b>	5.94	<b>94.20</b>	5.76	<b>3.14</b>	40.54	42.48	<b>-4.56</b>
10	Captives		8.99		8.71	<b>3.20</b>	72.36	55.72	<b>29.86</b>
	<b>Grand Total</b>	<b>66.31</b>	<b>74.32</b>	<b>112.08</b>	<b>71.18</b>	<b>4.41</b>	<b>557.95</b>	<b>519.26</b>	<b>7.45</b>

The Power utilities despatch has increased by 3.55% to 62.34 MT during Nov'22 as compared to 60.20 MT in Nov'21.

### Coal Despatch to Different Sectors

Fig. in MT

Sectors	Despatch during Nov			Despatch upto Nov		
	FY 23	FY 22	Growth (%) (FY23-FY22)	FY 23	FY 22	Growth (%) (FY23-FY22)
Power	62.34	60.20	3.55	475.27	425.45	11.71
CPP	4.43	3.33	33.03	26.34	30.34	-13.17
Steel	0.85	0.58	47.40	5.86	4.02	45.84
Cement	0.70	0.71	-0.42	4.81	4.58	5.00
Sponge Iron	0.59	0.75	-21.50	4.75	4.98	-4.52
Others	5.41	5.62	-3.67	40.92	49.90	-18.00
<b>Total</b>	<b>74.32</b>	<b>71.18</b>	<b>4.41</b>	<b>557.95</b>	<b>519.26</b>	<b>7.45</b>

## Lignite Production

Fig. in MT

SI No	Company	Production during Nov'22			Production upto Nov'22		
		FY 23	FY 22	Growth (%) (FY23-FY22)	FY 23	FY 22	Growth (%) (FY23-FY22)
1	NLCIL	1.42	1.18	19.86	16.19	14.81	9.30
2	GMDCL	0.74	0.77	-3.53	5.12	5.22	-2.05
3	GIPCL	0.32	0.39	-17.31	1.59	1.29	23.39
4	RSMML	0.16	0.19	-18.32	0.73	1.32	-44.71
5	BLMCL	0.53	0.50	7.03	3.51	3.79	-7.57
6	GHCL	0.03	0.01	212.50	0.05	0.05	10.42
7	VS Lignite	0.09	0.07	22.86	0.59	0.67	-11.28
8	GSPL	0.06	0.17	-63.79	0.92	1.00	-7.74
<b>Grand Total</b>		<b>3.34</b>	<b>3.28</b>	<b>1.92</b>	<b>28.69</b>	<b>28.15</b>	<b>1.94</b>

## Lignite Despatch

Fig. in MT

SI No	Company	Despatch during Nov'22			Despatch upto Nov'22		
		FY 23	FY 22	Growth (%) (FY23-FY22)	FY 23	FY 22	Growth (%) (FY23-FY22)
1	NLCIL	1.77	1.70	4.54	17.41	17.69	-1.61
2	GMDCL	0.74	0.77	-3.53	5.12	5.22	-2.05
3	GIPCL	0.32	0.39	-17.31	1.59	1.29	23.39
4	RSMML	0.16	0.19	-18.32	0.73	1.32	-44.71
5	BLMCL	0.46	0.51	-9.06	3.92	3.99	-1.83
6	GHCL	0.01	0.01	16.67	0.06	0.04	41.86
7	VS Lignite	0.10	0.07	40.58	0.64	0.63	2.40
8	GSPL	0.07	0.17	-57.47	0.81	1.08	-25.12
<b>Grand Total</b>		<b>3.63</b>	<b>3.70</b>	<b>-1.87</b>	<b>30.28</b>	<b>31.27</b>	<b>-3.18</b>

**Power Generation**

*Fig in MU*

Source-wise	Nov-22	% share	Nov-21	Oct-22	Growth(%) (Nov'22-Nov'21)	Growth(%) (Nov'22-Oct'22)
Coal	87687	74.29	75412	81391	16.28	7.74
Lignite	2544	2.16	1962	2649	29.66	-3.96
Hydro	10691	9.06	10625	17850	0.62	-40.11
Nuclear	3829	3.24	3667	4158	4.42	-7.91
Gas, Naptha & Diesel	1548	1.31	1990	1463	-22.21	5.81
RES (Wind, Solar, Biomass & Others)	11730	9.94	9312	12901	25.97	-9.08
<b>Total</b>	<b>118029</b>	<b>100.00</b>	<b>102968</b>	<b>120412</b>	<b>14.63</b>	<b>-1.98</b>

Coal based power generation has registered a growth of 16.28% in Nov'22 as compared to Nov'21 and overall power generation in Nov'22 has been 14.63% higher than the power generated in Nov'21. However, total power generation has reduced in Nov'22 to 118029 MU from 120412 MU in Oct'22 and registered a negative growth of 1.98%.

**Electricity Prices and Clearing Volume in Indian Energy Exchange**

Item	Type	During the period of Nov		
		FY 23	FY 22	Growth (%)
<b>Energy Prices (INR per MWh)</b>	RTC	4598	3076.29	49.47
	Evening	5861.09	4117.31	42.35
	Day	4301.26	2738.81	57.05
	Night	3492.61	2131.36	63.87
	Morning	5157.12	3758.98	37.19
<b>Market Clearing Volume (BU)</b>	RTC	7060.9	6554.4	7.73
	Evening	7238.57	6750.91	7.22
	Day	7630.4	6675.31	14.31
	Night	5484.93	5335.08	2.81
	Morning	8555.7	8181.86	4.57
	<b>Total</b>		<b>5083847.81</b>	<b>4719170.78</b>

### Despatch of Coal By CIL

Fig. in MT

Sectors	Coal Despatch during Nov'22			Coal Despatch upto Nov'22		
	FY 23	FY 22	Growth (%) (FY23-FY22)	FY 23	FY 22	Growth (%) (FY23-FY22)
Power	49.99	47.54	5.15	380.58	338.91	12.30
CPP	3.86	2.83	36.54	22.97	27.37	-16.08
Steel	0.24	0.17	43.71	2.02	0.90	123.70
Cement	0.31	0.28	9.54	2.05	2.27	-9.69
Sponge Iron	0.55	0.73	-24.97	4.50	4.86	-7.48
Others	4.43	5.15	-13.96	32.93	46.75	-29.57
<b>Total</b>	<b>59.38</b>	<b>56.70</b>	<b>4.73</b>	<b>445.05</b>	<b>421.07</b>	<b>5.70</b>

### Despatch of Coal By SCCL

Fig. in MT

Sectors	Coal Despatch during Nov'22			Coal Despatch upto Nov'22		
	FY 23	FY 22	Growth (%) (FY23-FY22)	FY 23	FY 22	Growth (%) (FY23-FY22)
Power	4.94	4.66	6.03	33.63	35.29	-4.71
CPP	0.25	0.30	-18.15	1.56	2.01	-22.04
Steel						
Cement	0.31	0.32	-2.83	1.94	1.92	0.73
Sponge Iron	0.04	0.02	137.50	0.25	0.11	123.01
Others	0.41	0.47	-12.45	3.16	3.14	0.51
<b>Total</b>	<b>5.94</b>	<b>5.76</b>	<b>3.14</b>	<b>40.54</b>	<b>42.48</b>	<b>-4.56</b>

### Coal Despatch to Different Sectors by Captive and Others

Fig. in MT

Sectors	Coal Despatch during Nov'22			Coal Despatch upto Nov'22		
	FY 23	FY 22	Growth (%) (FY23-FY22)	FY 23	FY 22	Growth (%) (FY23-FY22)
Power	7.405	8.00	-7.41	61.056	51.25	19.13
CPP	0.32	0.20	61.00	1.81	0.96	87.85
Steel	0.61	0.41	48.90	3.84	3.11	23.26
Cement	0.08	0.11	-20.00	0.82	0.38	113.28
Sponge Iron						
Others	0.572	0.001	57100	4.83	0.01	60325
<b>Total</b>	<b>8.99</b>	<b>8.71</b>	<b>3.20</b>	<b>72.36</b>	<b>55.72</b>	<b>29.86</b>

**Top 37 Mines Production during Nov'2022 (provisional)**

Sr. No	Subsidiary	Mines	Annual Target (MT)	Prod. Upto Oct'22 (MT)	Prod. during Nov'22 (MT)	Target upto Nov'22 (MT)	Prod. Upto Nov'22 (MT)	Achievement
1	ECL	Rajmahal	16	2.32	0.36	7.62	2.68	35.17%
2	ECL	Sonepur Bazari	11	6.21	1.08	6.53	7.29	111.54%
3	CCL	Amrapali	21	8.37	1.32	12.26	9.69	79.01%
4	CCL	Magadh	14	7.17	1.27	8.17	8.44	103.30%
5	CCL	Ashoka	9	5.63	1.09	5.25	6.73	128.03%
6	CCL	AKK	5	3.00	0.53	2.92	3.53	121.07%
7	NCL	Jayant	24	14.50	2.24	15.29	16.73	109.43%
8	NCL	Dudhichua	22	12.30	1.88	14.02	14.18	101.16%
9	NCL	Nigahi	21	13.63	1.94	13.38	15.57	116.35%
10	NCL	Amlohri	14	7.20	1.50	8.92	8.70	97.55%
11	NCL	Khadia	14	9.34	1.15	8.92	10.49	117.57%
12	NCL	Bina	10.5	6.76	0.85	6.69	7.61	113.75%
13	NCL	Krishnashila	7	4.51	0.63	4.46	5.14	115.27%
14	NCL	Block-B	5.47	3.61	0.46	3.49	4.07	116.90%
15	WCL	Penganga	6.3	2.81	0.32	3.26	3.13	95.84%
16	WCL	Mungoli	4.38	1.06	0.51	2.26	1.57	69.50%
17	WCL	Niljai Deep	4	1.06	0.37	2.07	1.43	69.00%
18	WCL	Makardhokra I	4	2.18	0.44	2.07	2.62	126.40%
19	SECL	Gevra	52	25.52	4.72	30.96	30.24	97.69%
20	SECL	Kusmunda	45	16.82	3.90	26.72	20.72	77.54%
21	SECL	Dipka	38	11.69	2.46	22.65	14.15	62.47%
22	SECL	Manikpur	4.90	3.30	0.54	2.89	3.84	132.79%
23	SECL	Gare Pelma IV/2&3	4.00	0.90	0.07	2.36	0.96	40.86%
24	MCL	Bhubaneswari	28	17.32	2.43	17.18	19.75	114.96%
25	MCL	Lakhanpur	21	13.73	2.14	13.03	15.87	121.76%
26	MCL	Kulda	18.5	11.96	2.04	11.55	14.00	121.24%
27	MCL	Garjanbahal	15.16	9.10	1.30	8.98	10.40	115.80%
28	MCL	Ananta	14	8.29	1.56	8.29	9.85	118.77%
29	MCL	Lingaraj	14	9.14	1.40	8.29	10.54	127.07%
30	MCL	Bharatpur	10	4.58	0.60	5.92	5.18	87.49%
31	MCL	Kaniha	10	6.72	1.11	5.92	7.83	132.21%
32	MCL	Hingula	10	5.69	1.14	5.92	6.83	115.37%
33	MCL	Jagannath	7.5	3.64	0.74	4.44	4.37	98.39%
34	MCL	Belpahar	7.5	1.53	0.52	4.44	2.05	46.09%
35	MCL	Balram	6.5	4.46	0.57	3.85	5.02	130.50%
36	MCL	Samaleswari	5	3.49	0.57	2.96	4.06	137.25%
37	MCL	Lajkura	4.5	2.89	0.38	2.67	3.27	122.86%
<b>Total</b>			<b>528.21</b>	<b>272.41</b>	<b>46.14</b>	<b>316.64</b>	<b>318.55</b>	<b>100.60%</b>

Particulars	No. of Mines
Mines produced more than 100%	24
Mines produced more than 80% , but less than 100%	5
Mines produced more than 50% , but less than 80%	5
Mines produced less than 50%	3

**Top 37 OBR during Nov'2022 (provisional)**

Sr. No	Subsidiary	Mines	Annual OBR Target (M.Cum)	OBR upto Oct'22 (M.Cum)	OBR during Nov'22 (M.Cum)	Target upto Nov'22 (M.Cum)	OBR upto Nov'22 (M.Cum)	Achievement
1	ECL	Rajmahal	24.1	6.79	1.67	15.16	8.46	55.79%
2	ECL	Sonepur Bazari	60.7	40.71	7.44	35.92	48.16	134.07%
3	CCL	Amrapali	24	10.07	2.42	14.01	12.49	89.11%
4	CCL	Magadh	18	7.76	1.31	10.51	9.07	86.34%
5	CCL	Ashoka	12	4.39	0.67	7.01	5.06	72.18%
6	CCL	AKK	8	4.89	0.80	4.67	5.69	121.89%
7	NCL	Jayant	53	37.07	6.33	33.41	43.40	129.91%
8	NCL	Dudhichua	72	36.88	6.60	45.47	43.49	95.63%
9	NCL	Nigahi	80	46.00	8.96	50.51	54.96	108.80%
10	NCL	Amlohri	59.5	38.10	5.88	37.87	43.98	116.14%
11	NCL	Khadia	51	28.02	5.35	32.02	33.37	104.23%
12	NCL	Bina	40.8	29.81	4.68	25.99	34.49	132.69%
13	NCL	Krishnashila	18.5	11.58	1.74	11.79	13.33	113.03%
14	NCL	Block-B	15	10.06	1.71	9.47	11.77	124.19%
15	WCL	Penganga	21	6.93	2.43	11.86	9.37	78.99%
16	WCL	Mungoli	22	6.10	2.86	12.53	8.96	71.49%
17	WCL	Niljai Deep	35.2	14.76	2.37	19.54	17.13	87.67%
18	WCL	Makardhokra I	18	9.47	2.29	9.93	11.76	118.42%
19	SECL	Gevra	68	37.78	6.25	42.38	44.03	103.89%
20	SECL	Kusmunda	57	28.49	5.17	35.52	33.65	94.74%
21	SECL	Dipka	39	10.66	3.53	24.30	14.19	58.39%
22	SECL	Manikpur	12	7.38	1.39	7.48	8.78	117.36%
23	SECL	Gare Pelma IV/2&3	10	1.84	0.43	6.23	2.27	36.43%
24	MCL	Bhubaneswari	16	5.37	2.63	10.28	8.00	77.78%
25	MCL	Lakhanpur	40	21.95	6.60	25.71	28.55	111.04%
26	MCL	Kulda	15.5	7.91	0.92	9.96	8.84	88.68%
27	MCL	Garjanbahal	11	7.50	1.80	7.07	9.31	131.61%
28	MCL	Ananta	24.5	17.13	3.08	16.86	20.21	119.84%
29	MCL	Lingaraj	12	9.80	1.37	7.71	11.17	144.82%
30	MCL	Bharatpur	10	5.92	1.33	6.43	7.25	112.72%
31	MCL	Kaniha	7	3.95	0.75	4.50	4.71	104.61%
32	MCL	Hingula	13	7.91	2.01	9.47	9.92	104.72%
33	MCL	Jagannath	7	4.28	0.82	4.50	5.10	113.40%
34	MCL	Belpahar	10	2.15	0.94	6.43	3.09	48.08%
35	MCL	Balram	14.5	8.12	1.49	9.32	9.61	103.16%
36	MCL	Samaleswari	12	6.90	1.46	7.71	8.36	108.41%
37	MCL	Lajkura	10	6.24	1.08	6.43	7.31	113.77%
<b>Total</b>			<b>1021.30</b>	<b>550.69</b>	<b>108.58</b>	<b>635.99</b>	<b>659.27</b>	<b>103.66%</b>

<b>Particulars</b>	
Mines produced more than 100%	23
Mines produced more than 80% , but less than 100%	6
Mines produced more than 50% , but less than 80%	6
Mines produced less than 50%	2

## Coal Production in mines of all Subsidiaries of CIL (provisional data)

Fig. in MT

SI No	Subs	Types of Mines	No of Mines	Annual Target (MT)	During Nov'22			Upto Nov'22		
					FY 23	FY 22	Growth %) M-O-M	FY 23	FY 22	Growth %) Y-O-Y
1	ECL	Top 37	2	27.00	1.44	1.07	34.58	9.98	8.29	20.39
		Others	2	4.30	0.33	0.32	3.13	2.58	2.93	-11.95
		Top 75	4	31.30	1.77	1.39	27.34	12.56	11.22	11.94
		Rest	73	18.70	0.98	0.82	19.51	8.05	7.12	13.06
	<b>Overall ECL</b>	<b>77</b>	<b>50.00</b>	<b>2.75</b>	<b>2.21</b>	<b>24.43</b>	<b>20.61</b>	<b>18.34</b>	<b>12.38</b>	
2	BCCL	Top 37	0	0.00	0.00	0.00		0.00	0.00	
		Others	6	18.08	1.82	1.59	14.65	12.21	10.38	17.66
		Top 75	6	18.08	1.82	1.59	14.65	12.21	10.38	17.66
		Rest	23	13.92	1.43	0.97	47.11	10.16	6.85	48.28
	<b>Overall BCCL</b>	<b>29</b>	<b>32.00</b>	<b>3.25</b>	<b>2.56</b>	<b>26.95</b>	<b>22.37</b>	<b>17.23</b>	<b>29.83</b>	
3	CCL	Top 37	4	49.00	4.22	4.09	3.18	28.39	24.10	17.80
		Others	5	12.55	1.03	0.62	66.61	6.58	5.91	11.39
		Top 75	9	61.55	5.25	4.71	11.53	34.97	30.01	16.54
		Rest	27	14.45	1.26	1.03	22.04	7.16	6.36	12.53
	<b>Overall CCL</b>	<b>36</b>	<b>76.00</b>	<b>6.51</b>	<b>5.74</b>	<b>13.41</b>	<b>42.13</b>	<b>36.37</b>	<b>15.84</b>	
4	MCL	Top 37	14	171.66	16.49	14.17	16.37	119.03	98.90	20.35
		Rest	4	4.34	0.09	0.70	-87.14	1.12	1.37	-18.25
	<b>Overall MCL</b>	<b>18</b>	<b>176.00</b>	<b>16.58</b>	<b>14.87</b>	<b>11.50</b>	<b>120.05</b>	<b>100.28</b>	<b>19.71</b>	
5	NCL	Top 37	8	117.97	10.66	10.39	2.60	82.50	72.41	13.93
		Others	2	4.03	0.41	0.44	-6.82	3.27	2.74	19.34
		Top 75	10	122.00	11.07	10.83	2.22	85.77	75.15	14.13
		Rest	0	0.00	0.00	0.00		0.00	0.00	
	<b>Overall NCL</b>	<b>10</b>	<b>122.00</b>	<b>11.07</b>	<b>10.83</b>	<b>2.22</b>	<b>85.77</b>	<b>75.11</b>	<b>14.19</b>	
6	SECL	Top 37	5	143.90	11.69	9.56	22.28	69.92	57.52	21.56
		Others	10	21.81	1.60	1.28	25.00	11.47	8.19	40.05
		Top 75	15	165.71	13.29	10.84	22.60	81.39	65.71	23.86
		Rest	47	16.29	1.32	1.39	-5.04	8.46	11.97	-29.32
	<b>Overall SECL</b>	<b>62</b>	<b>182.00</b>	<b>14.61</b>	<b>12.23</b>	<b>19.46</b>	<b>89.85</b>	<b>77.68</b>	<b>15.67</b>	
7	WCL	Top 37	4	18.68	1.64	1.66	-1.20	8.74	9.14	-4.38
		Others	13	28.36	3.09	1.58	95.57	16.17	8.55	89.12
		Top 75	17	47.04	4.73	3.24	45.99	24.91	17.69	40.81
		Rest	36	14.96	1.19	2.12	-43.87	6.83	10.70	-36.17
	<b>Overall WCL</b>	<b>53</b>	<b>62.00</b>	<b>5.92</b>	<b>5.36</b>	<b>10.45</b>	<b>31.74</b>	<b>28.39</b>	<b>11.80</b>	
8	CIL	Top 37	37	528.21	46.14	40.94	12.70	318.55	270.36	17.82
		Others	38	89.13	8.29	5.83	42.13	52.29	38.70	35.11
		Top 75	75	617.34	54.43	46.77	16.37	370.84	309.06	19.99
		Rest of mines	210	82.66	6.27	7.03	-10.75	41.79	44.35	-5.76
	<b>Overall CIL</b>	<b>285</b>	<b>700.00</b>	<b>60.70</b>	<b>53.80</b>	<b>12.83</b>	<b>412.63</b>	<b>353.41</b>	<b>16.76</b>	

Top 75 = Top 37 + others mines including in top 75 mines

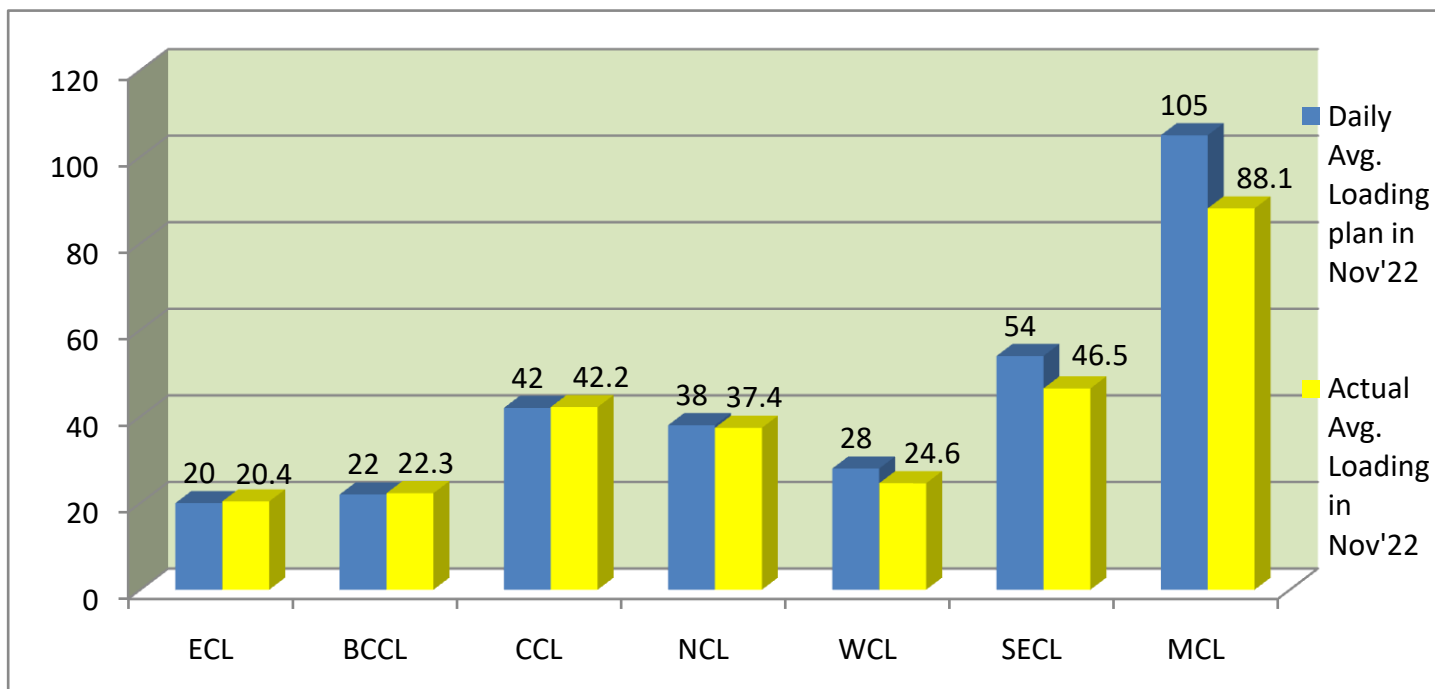
Rest of Mines = other than top 75

Overall Mines = Top 75 + rest of mines



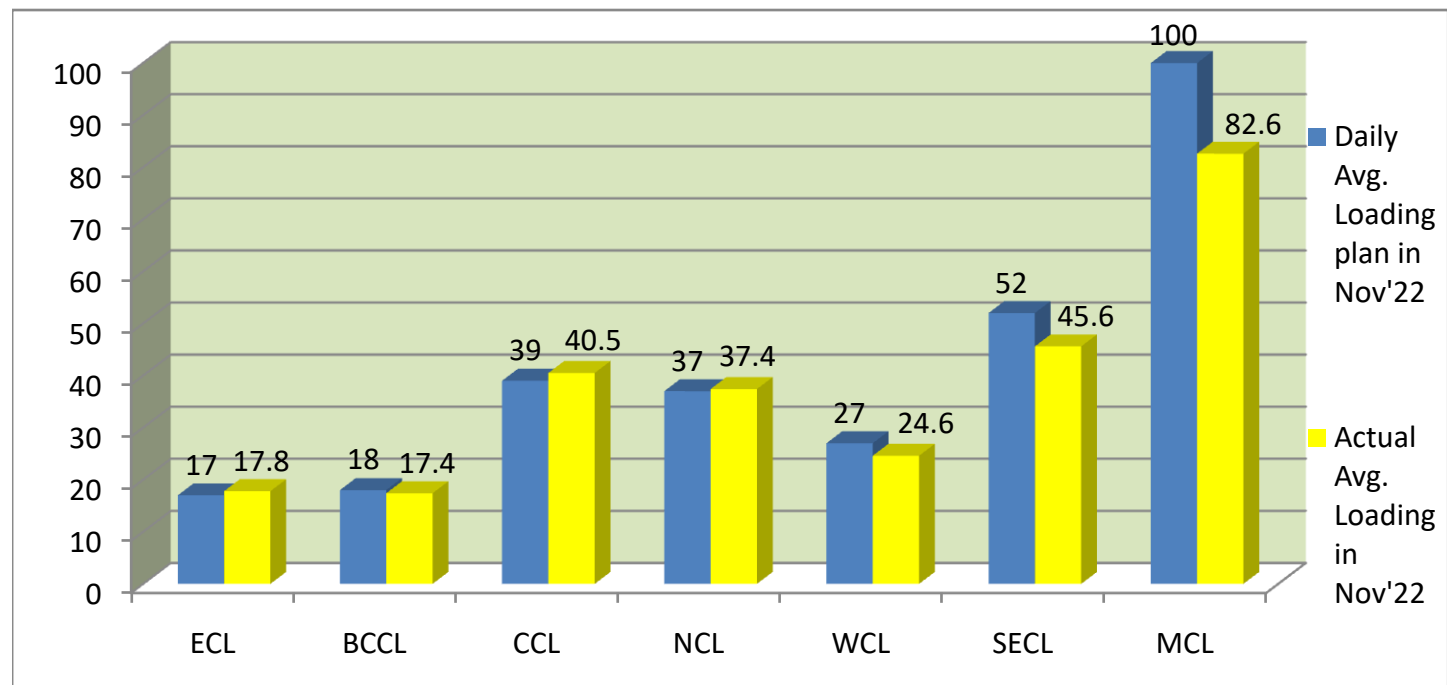
**COMPANY-WISE MOVEMENT OF RAKES FOR ALL SECTORS PER DAY IN NOV '22 (Prov.)**

COMPANY	Daily Avg. Loading plan in Nov'22	Actual Avg. Loading in Nov'22	Achievemnt (%)	Actual Avg. Loading in Nov'21	Growth% (Nov'21 to Nov'22)
ECL	20	20.4	<b>102.00</b>	16.6	22.89
BCCL	22	22.3	<b>101.36</b>	19.2	16.15
CCL	42	42.2	<b>100.48</b>	36.8	14.67
NCL	38	37.4	<b>98.42</b>	34.2	9.36
WCL	28	24.6	87.86	26.9	-8.55
SECL	54	46.5	86.11	47.6	-2.31
MCL	105	88.1	83.90	90.9	-3.08
<b>Total</b>	<b>309.0</b>	<b>281.5</b>	<b>91.10</b>	<b>272.2</b>	<b>3.42</b>



**COMPANY-WISE MOVEMENT OF RAKES FOR POWER SECTOR PER DAY IN NOV'22 (Prov.)**

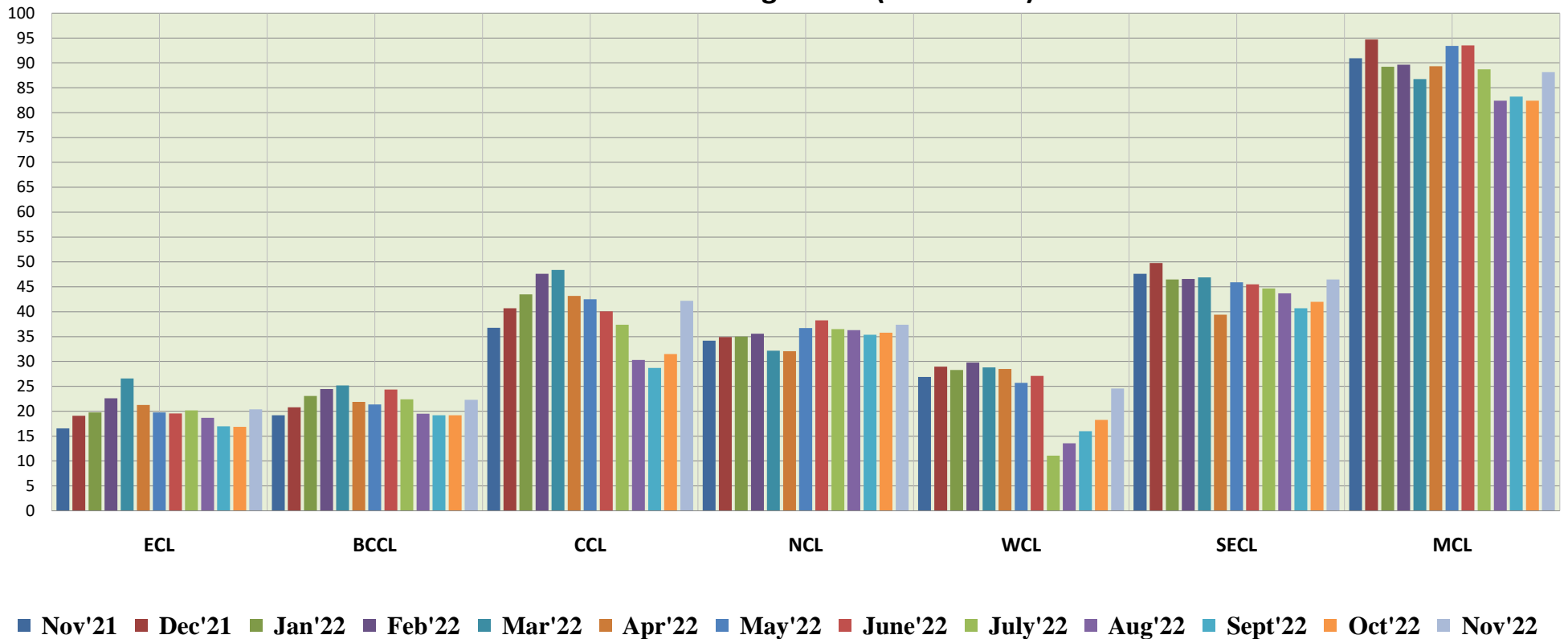
COMPANY	Daily Avg. Loading plan in Nov'22	Actual Avg. Loading in Nov'22	Achievemnt (%)	Actual Avg. Loading in Nov'21	Growth% (Nov'21 to Nov'22)
ECL	17	17.8	<b>104.71</b>	15.6	14.10
BCCL	18	17.4	<b>96.67</b>	15.7	10.83
CCL	39	40.5	<b>103.85</b>	34	19.12
NCL	37	37.4	<b>101.08</b>	34	10.00
WCL	27	24.6	91.11	26.9	-8.55
SECL	52	45.6	87.69	42.7	6.79
MCL	100	82.6	82.60	79.2	4.29
<b>Total</b>	<b>290.00</b>	<b>265.90</b>	<b>91.69</b>	<b>248.10</b>	<b>7.17</b>



**COMPANY-WISE MOVEMENT OF RAKES FOR ALL SECTORS PER DAY DURING NOV'21 TO NOV'22(Provisional)**

COMPANY													
	Nov'21	Dec'21	Jan'22	Feb'22	Mar'22	Apr'22	May'22	June'22	July'22	Aug'22	Sept'22	Oct'22	Nov'22
ECL	16.6	19.1	19.8	22.6	26.6	21.3	19.8	19.6	20.2	18.7	17	16.9	20.4
BCCL	19.2	20.8	23.1	24.5	25.2	21.9	21.4	24.4	22.4	19.5	19.2	19.2	22.3
CCL	36.8	40.7	43.5	47.6	48.4	43.2	42.5	40.1	37.4	30.3	28.7	31.5	42.2
NCL	34.2	34.9	35	35.6	32.2	32.1	36.7	38.3	36.5	36.3	35.4	35.8	37.4
WCL	26.9	29	28.3	29.8	28.8	28.5	25.7	27.1	11.1	13.6	16	18.3	24.6
SECL	47.6	49.8	46.5	46.6	46.9	39.4	45.9	45.5	44.7	43.7	40.7	42	46.5
MCL	90.9	94.7	89.2	89.6	86.7	89.3	93.4	93.5	88.7	82.4	83.2	82.4	88.1
<b>Total</b>	<b>272.2</b>	<b>289</b>	<b>285.4</b>	<b>296.3</b>	<b>294.8</b>	<b>275.8</b>	<b>285.3</b>	<b>288.5</b>	<b>261</b>	<b>244.5</b>	<b>240.2</b>	<b>246.1</b>	<b>281.5</b>

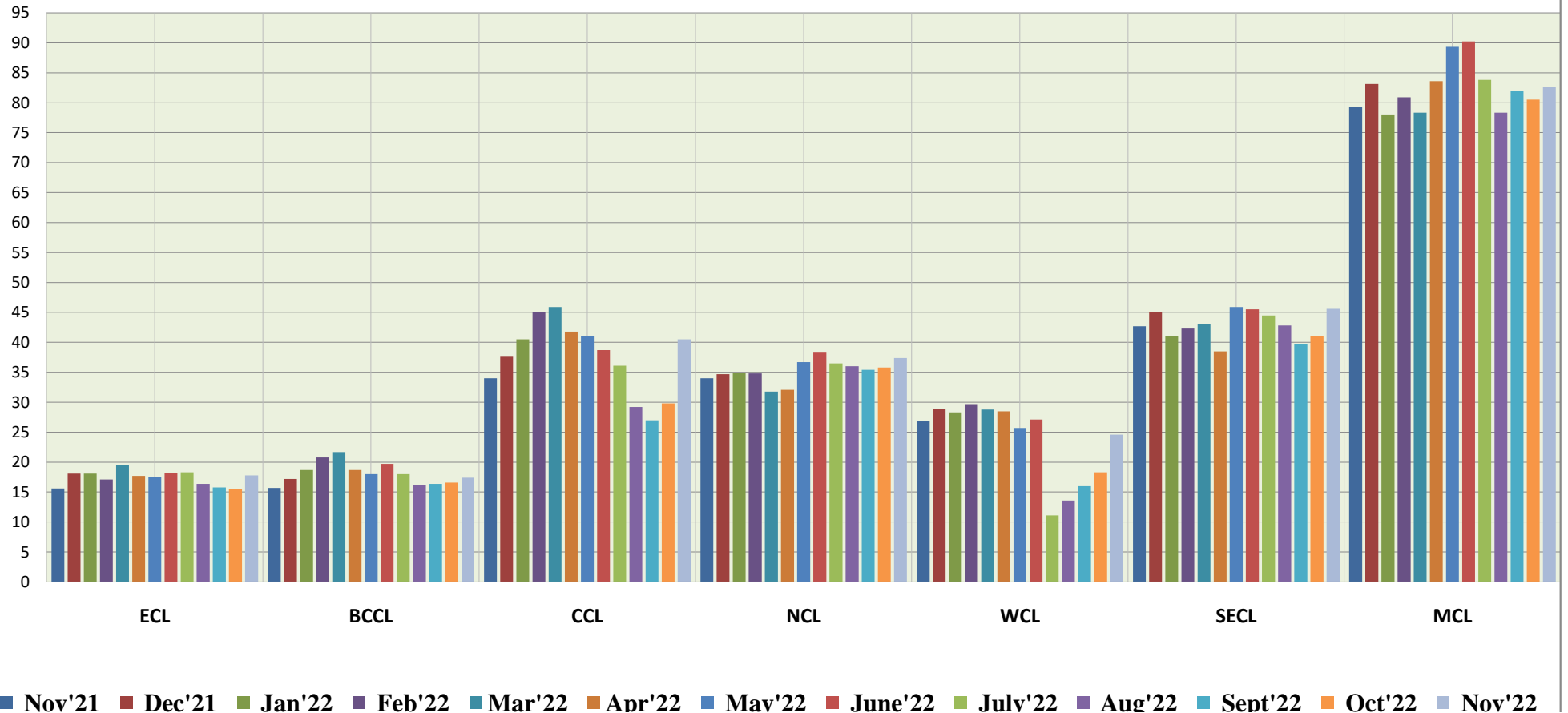
**Actual Rakes Loading Status (All Sectors)**



**COMPANY-WISE MOVEMENT OF RAKES FOR POWER SECTOR PER DAY DURING NOV'21 TO NOV'22(Provisional)**

COMPANY													
	Nov'21	Dec'21	Jan'22	Feb'22	Mar'22	Apr'22	May'22	June'22	July'22	Aug'22	Sept'22	Oct'22	Nov'22
ECL	15.6	18.1	18.1	17.1	19.5	17.7	17.5	18.2	18.3	16.4	15.8	15.5	17.8
BCCL	15.7	17.2	18.7	20.8	21.7	18.7	18	19.7	18	16.2	16.4	16.6	17.4
CCL	34	37.6	40.5	45	45.9	41.8	41.1	38.7	36.1	29.2	27	29.8	40.5
NCL	34	34.7	34.9	34.8	31.8	32.1	36.7	38.3	36.5	36	35.4	35.8	37.4
WCL	26.9	28.9	28.3	29.7	28.8	28.5	25.7	27.1	11.1	13.6	16	18.3	24.6
SECL	42.7	45	41.1	42.3	43	38.5	45.9	45.5	44.5	42.8	39.8	41	45.6
MCL	79.2	83.1	78	80.9	78.3	83.6	89.3	90.2	83.8	78.3	82	80.5	82.6
<b>Total</b>	<b>248.1</b>	<b>264.6</b>	<b>259.6</b>	<b>270.6</b>	<b>269</b>	<b>260.9</b>	<b>274.3</b>	<b>277.7</b>	<b>248.3</b>	<b>232.5</b>	<b>232.4</b>	<b>237.5</b>	<b>265.9</b>

**Actual Rake Loading Status (Power)**



Nov 22 - Dec 22 - Jan 22 - Feb 22 - Mar 22 - Apr 22 - May 22 - Jun 22 - July 22 - Aug 22 - Sept 22 - Oct 22 - Nov 22