

Monthly Coal Statistics for Aug'2022(Provisional)

Coal Production

India's coal production increased by 8.27% to 58.33 MT from 53.88 MT during Aug 22 as compared to Aug 21. During Aug 22, CIL, SCCL and Captives/ Others registered a growth of 8.49 & 27.06% by producing 46.22 MT & 8.02 MT respectively. However, SCCL registered a negative growth of 17.49% during the Month .

Coal Production

Fig. in MT

SI No	Subs	Monthly Target	Production during Aug 22				Production upto Aug 22		
			FY 23	Achmt.(%)	FY 22	Growth (%) (FY23-FY22)	FY 23	FY 22	Growth (%) (FY23-FY22)
1	ECL	3.10	2.36	76.13	2.12	11.32	13.38	12.20	9.67
2	BCCL	2.95	2.72	92.20	2.24	21.43	13.51	10.25	31.80
3	CCL	5.58	4.73	84.77	4.28	10.51	25.97	21.27	22.10
4	NCL	10.54	10.54	100.00	9.11	15.70	53.83	43.87	22.70
5	WCL	4.34	2.46	56.68	2.81	-12.46	18.37	15.95	15.17
6	SECL	11.63	9.46	81.34	9.44	0.21	54.28	47.10	15.24
7	MCL	14.73	13.96	94.77	12.62	10.62	73.91	58.52	26.30
8	NEC		0.01				0.07		
CIL		52.86	46.22	87.43	42.60	8.49	253.31	209.16	21.11
9	SCCL	4.58	4.10	89.51	4.96	-17.49	24.30	25.40	-4.34
10	Captives/Others	10.50	8.02	76.37	6.31	27.06	46.79	29.41	59.10
Grand Total		67.94	58.33	85.86	53.88	8.27	324.39	263.97	22.89

Coking Coal Production

Fig. in MT

SI No	Subs	Monthly Target	Production during Aug 22			Production upto Aug'22		
			FY 23	FY 22	Growth (%) (FY23-FY22)	FY 23	FY 22	Growth (%) (FY23-FY22)
1	ECL	0.00	0.00	0.00	-66.67	0.00	0.01	-70.00
2	BCCL	1.96	2.48	2.10	18.08	12.54	9.59	30.75
3	CCL	1.39	1.19	0.92	29.91	6.43	5.31	21.00
5	WCL	0.01	0.01	0.01	-33.33	0.04	0.07	-41.67
6	SECL	0.02	0.02	0.02	16.67	0.10	0.09	6.67
CIL		3.37	3.70	3.05	21.34	19.11	15.07	26.76

Coal Despatch

India's coal despatch increased by 5.41% to 63.43 MT from 60.18 MT during Aug'22 as compared to Aug'21. During Aug'22, CIL and Captives/Others registered a growth of 5.11% & 26.29% by despatching 51.12 & 8.28 MT respectively. However, SCCL registered a negative growth of 19.14% during the Month.

Coal Despatch

Fig. in MT

SI No	Subs	Monthly Target	Despatch during Aug'22				Despatch upto Aug'22		
			FY 23	Achmt.(%)	FY 22	Growth (%) (FY23-FY22)	FY 23	FY 22	Growth (%) (FY23-FY22)
1	ECL	2.95	2.66	90.17	2.40	10.83	14.46	16.04	-9.85
2	BCCL	2.95	2.68	90.85	2.77	-3.25	14.51	13.03	11.36
3	CCL	6.20	5.08	81.94	5.02	1.20	31.43	28.63	9.78
4	NCL	10.85	10.69	98.53	9.22	15.94	56.63	47.61	18.95
5	WCL	4.34	3.31	76.27	4.33	-23.56	23.90	24.60	-2.85
6	SECL	12.71	11.41	89.77	10.81	5.55	62.58	62.29	0.47
7	MCL	16.28	15.28	93.86	14.09	8.45	79.55	67.31	18.18
8	NEC		0.00				0.05	0.00	
CIL		56.27	51.12	90.85	48.64	5.11	283.10	259.50	9.09
9	SCCL	4.78	4.03	84.31	4.98	-19.14	24.69	26.70	-7.54
10	Captives	10.50	8.28	78.82	6.55	26.29	47.98	31.67	51.53
Grand Total		71.55	63.43	88.65	60.18	5.41	355.77	317.87	11.93

The Power utilities despatch has grown by 10.84% to 54.09 MT during Aug 22 as compared to 48.80 MT in Aug'21 due to increase in power demand.

Coal Despatch to Different Sectors

Fig. in MT

Sectors	Despatch during Aug			Despatch upto Aug		
	FY 23	FY 22	Growth (%) (FY23-FY22)	FY 23	FY 22	Growth (%) (FY23-FY22)
Power	54.09	48.80	10.84	305.24	255.30	19.56
CPP	3.03	2.36	28.75	14.75	17.78	-17.03
Steel	0.68	0.47	43.31	3.55	2.38	49.12
Cement	0.55	0.58	-5.83	2.99	2.96	1.08
Sponge Iron	0.63	0.69	-7.86	3.04	3.09	-1.46
Others	4.45	7.28	-38.95	26.20	36.36	-27.95
Total	63.43	60.18	5.40	355.77	317.87	11.93

Lignite Production

Fig. in MT

SI No	Company	Production during Aug			Production upto Aug		
		FY 23	FY 22	Growth (%) (FY23-FY22)	FY 23	FY 22	Growth (%) (FY23-FY22)
1	NLCIL	2.13	2.25	-5.21	11.25	9.45	19.00
2	GMDCL	0.33	0.59	-44.50	3.20	3.34	-4.23
3	GIPCL	0.00	0.00		1.16	0.80	45.55
4	RSMML	0.04	0.20	-79.60	0.34	0.76	-56.02
5	BLMCL	0.34	0.45	-26.05	2.10	2.28	-8.06
6	GHCL	0.00	0.00		0.02	0.04	-45.00
7	VS Lignite	0.06	0.10	-35.05	0.40	0.38	6.05
8	GSPL	0.03	0.11	-69.16	0.66	0.60	11.60
Grand Total		2.93	3.69	-20.74	19.13	17.65	8.39

Lignite Despatch

Fig. in MT

SI No	Company	Despatch during Aug			Despatch upto Aug		
		FY 23	FY 22	Growth (%) (FY23-FY22)	FY 23	FY 22	Growth (%) (FY23-FY22)
1	NLCIL	2.17	2.01	8.11	11.60	11.75	-1.31
2	GMDCL	0.33	0.59	-44.50	3.20	3.34	-4.23
3	GIPCL	0.00	0.00		1.16	0.80	45.55
4	RSMML	0.04	0.20	-79.60	0.34	0.76	-56.02
5	BLMCL	0.34	0.51	-33.79	2.58	2.47	4.62
6	GHCL	0.01	0.01	100.00	0.04	0.03	44.00
7	VS Lignite	0.11	0.08	32.50	0.43	0.36	18.13
8	GSPL	0.03	0.15	-78.00	0.52	0.65	-19.91
Grand Total		3.03	3.54	-14.56	19.86	20.16	-1.48

Power Generation

Fig in MU

Source-wise	Aug-22	% share	Aug-21	Jul-22	Growth(%) (Aug'22-Aug'21)	Growth(%) (Aug'22-July'22)
Coal	85785	62.94	85736	86039	0.06	-0.30
Lignite	2783	2.04	2203	2911	26.33	-4.40
Hydro	24806	18.20	22231	21145	11.58	17.31
Nuclear	3467	2.54	2808	3755	23.47	-7.67
Gas, Naptha & Diesel	1847	1.36	3404	1837	-45.74	0.54
RES (Wind, Solar, Biomass & Others)	17617	12.92	15769	18244	11.72	-3.44
Total	136305	100.00	132151	133931	3.14	1.77

Coal based power generation has registered a petty growth of 0.06% in Aug 2022 as compared to Aug 2021. The overall power generation in Aug 2022 has been 3.14% higher than the power generated in Aug 2021. However, Coal based power generation in the month of Aug 2022 has been 85785 MU in comparison to 86039 MU in July 2022 and registered a minor negative growth of 0.30%. However, total power generation has increased in Aug 2022 to 136305 MU from 133931 MU in July 2022 and registered a growth of 1.77%.

Electricity Prices and Clearing Volume in Indian Energy Exchange

Item	Type	During the period of Aug		
		FY 23	FY 22	Growth (%)
Energy Prices (INR per MWh)	RTC	5166.43	5063.87	2.03
	Evening	7926.9	7867.38	0.76
	Day	3410.04	3442.25	-0.94
	Night	4788.12	4630.25	3.41
	Morning	4761.25	4455.28	6.87
Market Clearing Volume (BU)	RTC	4742.88	8951.35	-47.01
	Evening	4654.67	8672.78	-46.33
	Day	4592.01	8763.98	-47.60
	Night	4540.65	8461.13	-46.34
	Morning	5493.13	10555	-47.96
	Total		3528703.22	6659807.05

Despatch of Coal By CIL

Fig. in MT

Sectors	Coal Despatch during Aug'22			Coal Despatch upto Aug'22		
	FY 23	FY 22	Growth (%) (FY23-FY22)	FY 23	FY 22	Growth (%) (FY23-FY22)
Power	43.62	38.68	12.78	243.47	203.93	19.39
CPP	2.68	2.05	31.05	12.78	15.96	-19.90
Steel	0.23	0.09	144.68	1.28	0.54	138.81
Cement	0.28	0.27	5.26	1.34	1.61	-16.82
Sponge Iron	0.61	0.67	-8.96	2.89	3.03	-4.49
Others	3.70	6.89	-46.29	21.34	34.44	-38.04
Total	51.12	48.64	5.10	283.10	259.50	9.09

Despatch of Coal By SCCL

Fig. in MT

Sectors	Coal Despatch during Aug'22			Coal Despatch upto Aug'22		
	FY 23	FY 22	Growth (%) (FY23-FY22)	FY 23	FY 22	Growth (%) (FY23-FY22)
Power	3.30	4.08	-19.17	20.54	22.16	-7.31
CPP	0.19	0.23	-17.47	0.97	1.34	-27.58
Steel						
Cement	0.18	0.27	-32.58	1.11	1.23	-10.16
Sponge Iron	0.02	0.02	35.29	0.15	0.06	154.24
Others	0.34	0.39	-13.04	1.93	1.91	0.73
Total	4.03	4.98	-19.14	24.69	26.70	-7.53

Coal Despatch to Different Sectors by Captive and Others

Fig. in MT

Sectors	Coal Despatch during Aug'22			Coal Despatch upto Aug'22		
	FY 23	FY 22	Growth (%) (FY23-FY22)	FY 23	FY 22	Growth (%) (FY23-FY22)
Power	7.174	6.04	18.70	41.234	29.21	41.15
CPP	0.16	0.08	101.23	1.00	0.49	106.16
Steel	0.45	0.38	18.04	2.27	1.84	23.05
Cement	0.09	0.05	78.00	0.55	0.12	365.81
Sponge Iron						
Others	0.405	0.001	40400	2.93	0.00	58520
Total	8.28	6.55	26.29	47.98	31.67	51.53

Top 37 Mines Production during Aug 2022 (provisional)

Sr. No	Subsidiary	Mines	Annual Target (MT)	Prod. Upto July 2022 (MT)	Prod. during Aug 2022 (MT)	Target upto Aug 2022	Prod. Upto Aug 2022	Achievement
1	ECL	Rajmahal	16	1.59	0.33	4.70	1.92	40.75%
2	ECL	Sonepur Bazari	11	3.80	0.77	4.48	4.56	101.70%
3	CCL	Amrapali	21	5.42	0.91	7.66	6.33	82.71%
4	CCL	Magadh	14	4.27	1.11	5.10	5.38	105.42%
5	CCL	Ashoka	9	3.24	0.78	3.28	4.02	122.50%
6	CCL	AKK	5	1.88	0.39	1.82	2.27	124.50%
7	NCL	Jayant	24	8.33	2.03	9.66	10.37	107.34%
8	NCL	Dudhichua	22	7.17	1.70	8.85	8.87	100.19%
9	NCL	Nigahi	21	7.98	2.00	8.45	9.98	118.12%
10	NCL	Amlohri	14	4.03	0.99	5.63	5.02	89.12%
11	NCL	Khadia	14	5.56	1.29	5.63	6.85	121.66%
12	NCL	Bina	10.5	3.90	1.00	4.22	4.90	116.07%
13	NCL	Krishnashila	7	2.49	0.66	2.82	3.15	111.94%
14	NCL	Block-B	5.47	2.09	0.50	2.20	2.59	117.76%
15	WCL	Penganga	6.3	1.82	0.25	2.02	2.06	102.01%
16	WCL	Mungoli	4.375	0.47	0.02	1.41	0.50	35.26%
17	WCL	Niljai Deep	4	0.91	0.12	1.28	1.02	79.70%
18	WCL	Makardhokra I	0	1.33	0.24	1.28	1.57	122.19%
19	SECL	Gevra	52	14.78	3.36	19.64	18.14	92.34%
20	SECL	Kusmunda	45	10.23	1.98	16.50	12.22	74.01%
21	SECL	Dipka	38	7.39	1.40	14.05	8.79	62.51%
22	SECL	Manikpur	4.90	1.88	0.43	1.76	2.31	131.02%
23	SECL	Gare Pelma IV/2&3	4.00	0.89	0.00	1.44	0.90	62.33%
24	MCL	Bhubaneswari	28	10.22	2.32	10.74	12.54	116.73%
25	MCL	Lakhanpur	21	7.79	1.88	8.15	9.67	118.66%
26	MCL	Kulda	18.5	6.62	1.72	7.22	8.34	115.51%
27	MCL	Garjanbahal	15.16	5.25	1.37	5.61	6.62	117.97%
28	MCL	Ananta	14	4.60	1.13	5.18	5.74	110.66%
29	MCL	Lingaraj	14	5.52	1.17	5.18	6.69	129.05%
30	MCL	Bharatpur	10	2.59	0.56	3.70	3.16	85.25%
31	MCL	Kaniha	10	3.89	0.87	3.70	4.75	128.36%
32	MCL	Hingula	10	3.07	0.84	3.70	3.90	105.43%
33	MCL	Jagannath	7.5	2.18	0.45	2.78	2.63	94.70%
34	MCL	Belpahar	7.5	1.39	0.05	2.78	1.44	51.76%
35	MCL	Balram	6.5	2.62	0.61	2.41	3.23	134.04%
36	MCL	Samaleswari	5	1.93	0.49	1.85	2.42	130.55%
37	MCL	Lajkura	4.5	1.65	0.39	1.67	2.05	122.79%
Total			524.21	160.79	36.10	198.61	196.89	99.14%

Particulars	No. of Mines
Mines produced more than 100%	25
Mines produced more than 80% , but less than 100%	5
Mines produced more than 50% , but less than 80%	5
Mines produced less than 50%	2

Top 37 OBR during Aug 2022 (provisional)

Sr. No	Subsidiary	Mines	Annual OBR Target (M.Cum)	OBR upto July 2022 (M.Cum)	OBR during Aug 2022 (M.Cum)	Target upto Aug 2022 (M.Cum)	OBR upto Aug 2022 (M.Cum)	Achievement
1	ECL	Rajmahal	24.1	4.20	0.68	9.58	4.88	43.80%
2	ECL	Sonepur Bazari	60.7	23.62	5.33	23.52	28.95	100.45%
3	CCL	Amrapali	24	6.15	1.45	8.75	7.61	70.31%
4	CCL	Magadh	18	4.94	0.88	6.56	5.82	75.25%
5	CCL	Ashoka	12	2.79	0.54	4.37	3.33	63.74%
6	CCL	AKK	8	3.14	0.44	2.92	3.58	107.62%
7	NCL	Jayant	53	21.54	4.75	20.94	26.28	102.86%
8	NCL	Dudhichua	72	22.20	5.22	28.57	27.42	77.71%
9	NCL	Nigahi	80	23.92	6.62	31.76	30.55	75.34%
10	NCL	Amlohri	59.5	21.39	5.17	23.90	26.56	89.49%
11	NCL	Khadia	51	16.38	3.24	20.07	19.61	81.62%
12	NCL	Bina	40.8	17.48	4.27	16.41	21.75	106.50%
13	NCL	Krishnashila	18.5	7.32	1.59	7.45	8.91	98.23%
14	NCL	Block-B	15	5.86	1.43	5.99	7.29	97.78%
15	WCL	Penganga	21	3.20	1.37	7.24	4.57	44.12%
16	WCL	Mungoli	22	2.47	0.86	7.64	3.33	32.25%
17	WCL	Niljai Deep	35.2	8.47	1.59	11.96	10.06	70.82%
18	WCL	Makardhokra I	18	5.47	1.18	6.08	6.66	89.99%
19	SECL	Gevra	68	22.95	3.63	26.18	26.58	87.65%
20	SECL	Kusmunda	57	16.81	2.65	21.95	19.45	76.59%
21	SECL	Dipka	39	5.14	0.88	15.02	6.02	34.24%
22	SECL	Manikpur	12	4.84	0.82	4.62	5.65	104.67%
23	SECL	Gare Pelma IV/2&3	10	1.25	0.13	3.85	1.37	32.35%
24	MCL	Bhubaneswari	16	2.33	0.48	6.52	2.81	35.78%
25	MCL	Lakhanpur	40	9.55	1.99	16.29	11.54	58.63%
26	MCL	Kulda	15.5	4.87	0.95	6.31	5.82	77.12%
27	MCL	Garjanbahal	11	4.43	0.81	4.48	5.23	98.82%
28	MCL	Ananta	24.5	10.36	1.76	10.99	12.12	94.24%
29	MCL	Lingaraj	12	6.14	1.07	4.89	7.21	125.63%
30	MCL	Bharatpur	10	3.29	0.58	4.07	3.88	80.91%
31	MCL	Kaniha	7	2.16	0.35	2.85	2.51	75.81%
32	MCL	Hingula	13	4.10	0.96	6.31	5.06	64.96%
33	MCL	Jagannath	7	2.83	0.39	2.85	3.22	99.22%
34	MCL	Belpahar	10	1.63	0.01	4.07	1.64	40.04%
35	MCL	Balram	14.5	4.60	0.88	5.90	5.48	77.93%
36	MCL	Samaleswari	12	3.66	0.77	4.89	4.44	75.00%
37	MCL	Lajkura	10	3.76	0.66	4.07	4.42	92.28%
Total			1021.30	315.21	66.38	399.82	381.59	78.84%

Particulars	
Mines produced more than 100%	6
Mines produced more than 80% , but less than 100%	10
Mines produced more than 50% , but less than 80%	15
Mines produced less than 50%	6

Coal Production in mines of all Subsidiaries of CIL (provisional data)

Fig. in MT

SI No	Subs	Types of Mines	No of Mines	Annual Target (MT)	During Aug'22			Upto Aug'22		
					FY 23	FY 22	Growth (%) M-O-M	FY 23	FY 22	Growth (%) Y-O-Y
1	ECL	Top 37	2	27.00	1.09	0.89	22.47	6.48	5.34	21.35
		Others	2	4.30	0.37	0.44	-16.59	1.54	1.82	-15.38
		Top 75	4	31.30	1.46	1.33	9.55	8.02	7.16	12.01
		Rest	74	18.70	0.90	0.79	14.30	5.36	5.04	6.35
	Overall ECL	78	50.00	2.36	2.12	11.32	13.38	12.20	9.67	
2	BCCL	Top 37	0	0.00	0.00	0.00		0.00	0.00	
		Others	6	18.08	1.55	1.38	12.09	7.22	6.24	15.71
		Top 75	6	18.08	1.55	1.38	12.09	7.22	6.24	15.71
		Rest	24	13.92	1.17	0.86	36.41	6.29	4.01	56.86
	Overall BCCL	30	32.00	2.72	2.24	21.43	13.51	10.25	31.80	
3	CCL	Top 37	4	49.00	3.19	2.89	10.38	18.00	13.52	33.14
		Others	5	12.55	0.85	0.68	25.00	3.94	4.14	-4.83
		Top 75	9	61.55	4.04	3.57	13.17	21.94	17.66	24.24
		Rest	33	14.45	0.69	0.71	-2.82	4.03	3.61	11.63
	Overall CCL	42	76.00	4.73	4.28	10.51	25.97	21.27	22.10	
4	MCL	Top 37	14	171.66	13.85	12.55	10.37	73.17	58.05	26.05
		Rest	5	4.34	0.11	0.07	54.93	0.74	0.47	57.45
	Overall MCL	19	176.00	13.96	12.62	10.62	73.91	58.52	26.30	
5	NCL	Top 37	8	117.97	10.17	8.78	15.83	51.74	42.30	22.32
		Others	2	4.03	0.37	0.33	12.12	2.09	1.57	33.12
		Top 75	10	122.00	10.54	9.11	15.70	53.83	43.87	22.70
		Rest	0	0.00	0.00	0.00		0.00	0.00	
	Overall NCL	10	122.00	10.54	9.11	15.70	53.83	43.87	22.70	
6	SECL	Top 37	5	143.90	7.17	4.84	48.14	42.35	34.00	24.56
		Others	10	21.81	1.51	0.78	93.46	7.17	5.01	43.11
		Top 75	15	165.71	8.68	5.62	54.43	49.52	39.01	26.94
		Rest	55	16.29	0.78	3.82	-79.55	4.76	8.09	-41.16
	Overall SECL	70	182.00	9.46	9.44	0.21	54.28	47.10	15.24	
7	WCL	Top 37	4	18.68	0.63	0.93	-32.26	5.16	5.27	-2.09
		Others	13	28.36	1.22	1.01	20.79	8.78	4.87	80.29
		Top 75	17	47.04	1.85	1.94	-4.64	13.94	10.14	37.48
		Rest	43	14.96	0.61	0.87	-29.89	4.43	5.81	-23.75
	Overall WCL	60	62.00	2.46	2.81	-12.46	18.37	15.95	15.17	
8	CIL	Top 37	37	528.21	36.10	30.88	16.91	196.90	158.48	24.24
		Others	38	89.13	5.86	4.62	26.90	30.74	23.65	29.98
		Top 75	75	617.34	41.96	35.50	18.21	227.64	182.13	24.99
		Rest of mines	234	82.66	4.26	7.10	-40.05	25.71	27.03	-4.88
	Overall CIL	309	700.00	46.22	42.60	8.50	253.31	209.16	21.11	

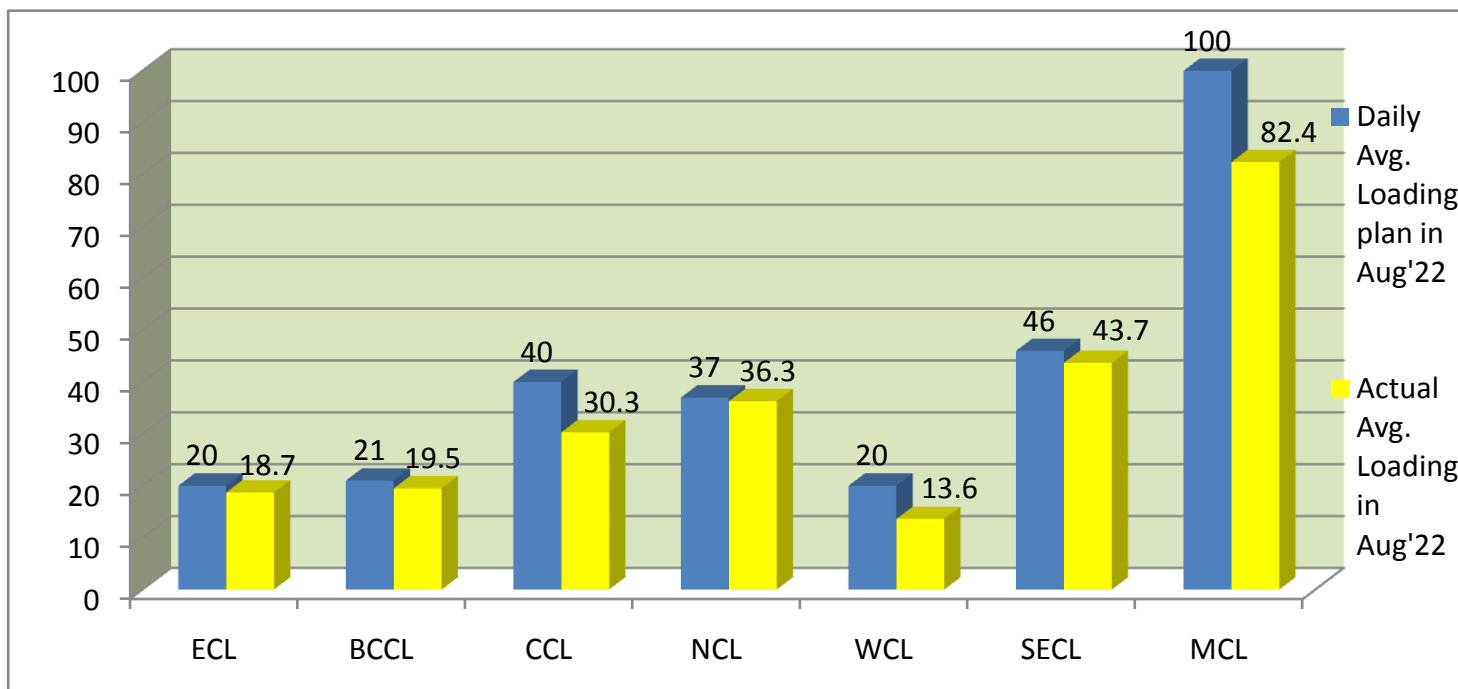
Top 75 = Top 37 + others mines including in top 75 mines

Rest of Mines = other than top 75

Overall Mines = Top 75 + rest of mines

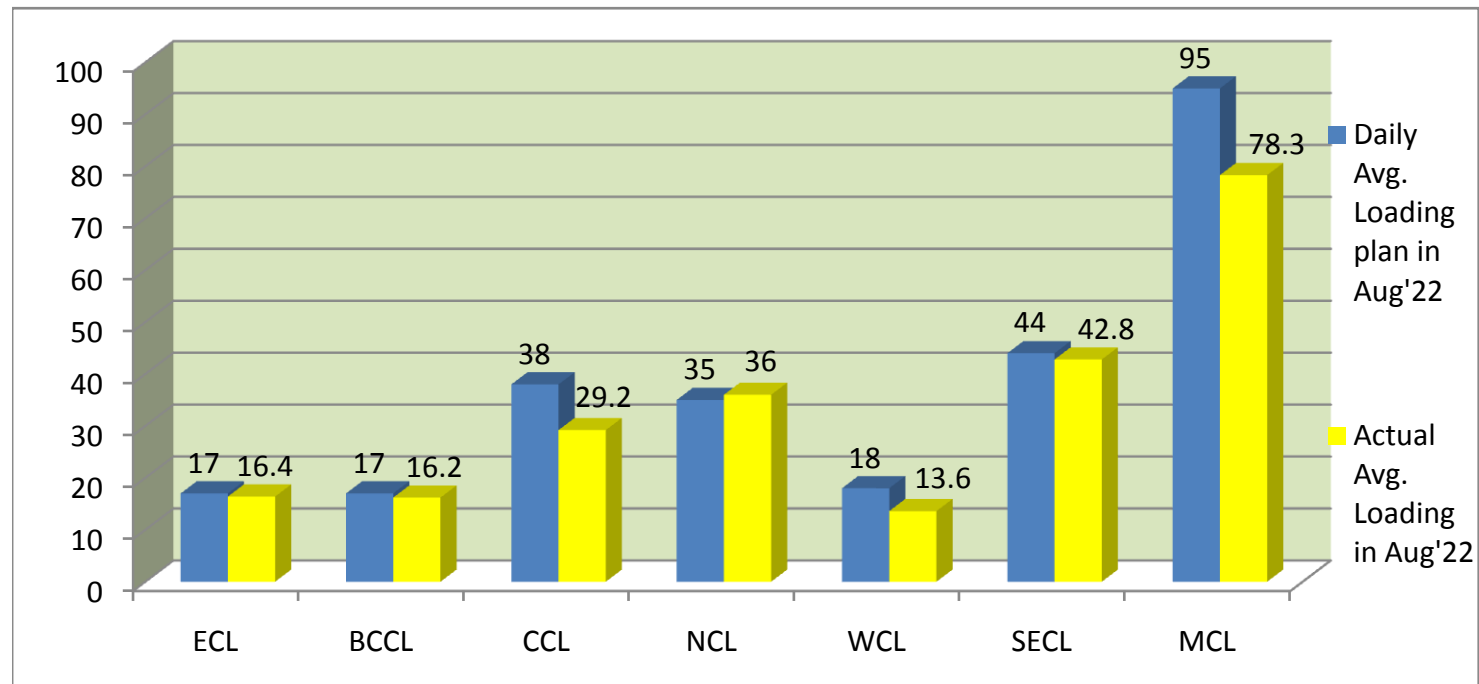
COMPANY-WISE MOVEMENT OF RAKES FOR ALL SECTORS PER DAY IN AUG '22 (Prov.)

COMPANY	Daily Avg. Loading plan in Aug'22	Actual Avg. Loading in Aug'22	Achievemnt (%)	Actual Avg. Loading in Aug'21	Growth% (Aug'21 to Aug'22)
ECL	20	18.7	93.50	14.4	29.86
BCCL	21	19.5	92.86	21.4	-8.88
CCL	40	30.3	75.75	33.3	-9.01
NCL	37	36.3	98.11	27.8	30.58
WCL	20	13.6	68.00	22.8	-40.35
SECL	46	43.7	95.00	36.6	19.40
MCL	100	82.4	82.40	85.5	-3.63
Total	284	244.5	86.09	241.8	1.12



COMPANY-WISE MOVEMENT OF RAKES FOR POWER SECTOR PER DAY IN AUG '22 (Prov.)

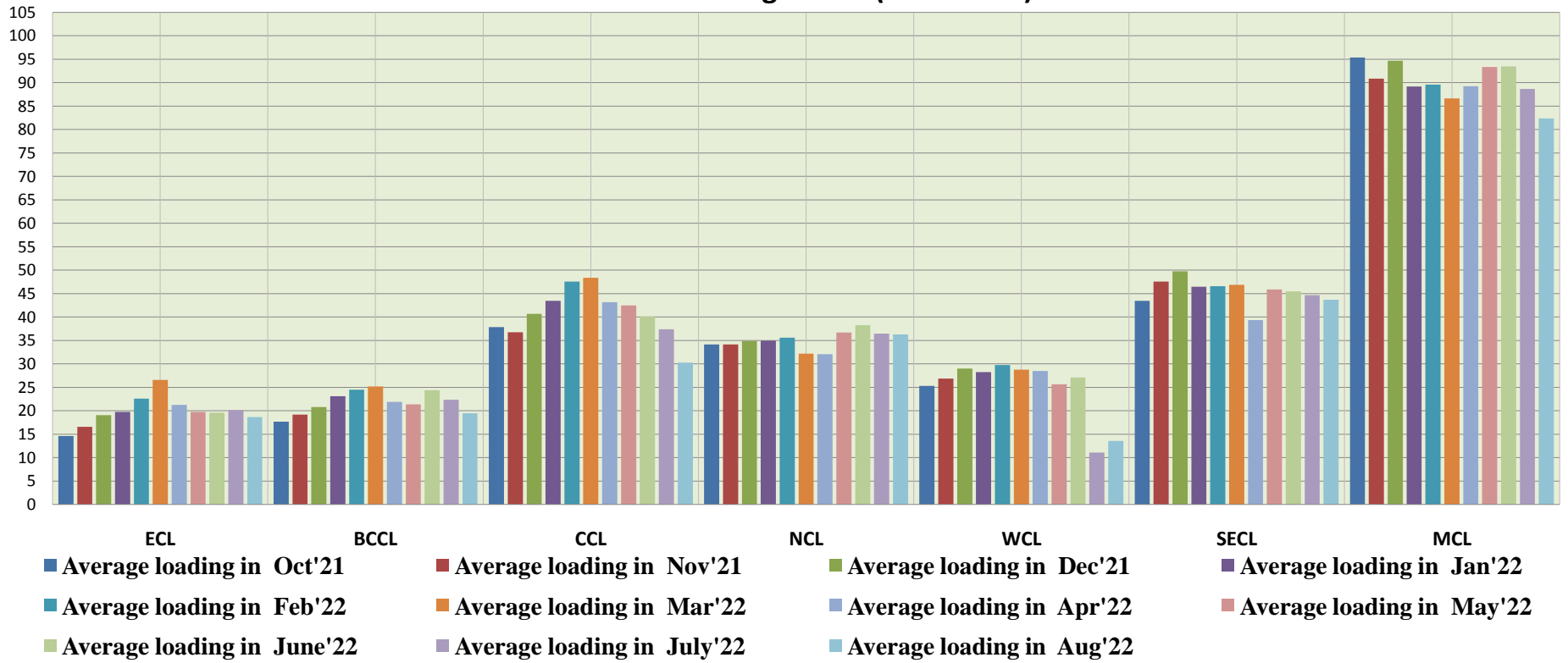
COMPANY	Daily Avg. Loading plan in Aug'22	Actual Avg. Loading in Aug'22	Achievemnt (%)	Actual Avg. Loading in Aug'21	Growth% (Aug'21 to Aug'22)
ECL	17	16.4	96.47	12.5	31.20
BCCL	17	16.2	95.29	18.5	-12.43
CCL	38	29.2	76.84	30.4	-3.95
NCL	35	36	102.86	25.5	41.18
WCL	18	13.6	75.56	22.3	-39.01
SECL	44	42.8	97.27	32.9	30.09
MCL	95	78.3	82.42	68.7	13.97
Total	264	232.5	88.07	210.8	10.29



COMPANY-WISE MOVEMENT OF RAKES FOR ALL SECTORS PER DAY DURING OCT'21 TO JULY'22(Provisional)

COMPANY	Average loading in										
	Oct'21	Nov'21	Dec'21	Jan'22	Feb'22	Mar'22	Apr'22	May'22	June'22	July'22	Aug'22
ECL	14.6	16.6	19.1	19.8	22.6	26.6	21.3	19.8	19.6	20.2	18.7
BCCL	17.7	19.2	20.8	23.1	24.5	25.2	21.9	21.4	24.4	22.4	19.5
CCL	37.9	36.8	40.7	43.5	47.6	48.4	43.2	42.5	40.1	37.4	30.3
NCL	34.2	34.2	34.9	35	35.6	32.2	32.1	36.7	38.3	36.5	36.3
WCL	25.3	26.9	29	28.3	29.8	28.8	28.5	25.7	27.1	11.1	13.6
SECL	43.5	47.6	49.8	46.5	46.6	46.9	39.4	45.9	45.5	44.7	43.7
MCL	95.4	90.9	94.7	89.2	89.6	86.7	89.3	93.4	93.5	88.7	82.4
Total	268.6	272.2	289	285.4	296.3	294.8	275.8	285.3	288.5	261	244.5

Actual Rakes Loading Status (All Sectors)



COMPANY-WISE MOVEMENT OF RAKES FOR POWER SECTOR PER DAY DURING OCT'21 TO AUG'22(Provisional)

Average loading in

COMPANY	Oct'21	Nov'21	Dec'21	Jan'22	Feb'22	Mar'22	Apr'22	May'22	June'22	July'22	Aug'22
ECL	14.5	15.6	18.1	18.1	17.1	19.5	17.7	17.5	18.2	18.3	16.4
BCCL	14.8	15.7	17.2	18.7	20.8	21.7	18.7	18	19.7	18	16.2
CCL	36.3	34	37.6	40.5	45	45.9	41.8	41.1	38.7	36.1	29.2
NCL	33.9	34	34.7	34.9	34.8	31.8	32.1	36.7	38.3	36.5	36
WCL	25.3	26.9	28.9	28.3	29.7	28.8	28.5	25.7	27.1	11.1	13.6
SECL	41.5	42.7	45	41.1	42.3	43	38.5	45.9	45.5	44.5	42.8
MCL	88.3	79.2	83.1	78	80.9	78.3	83.6	89.3	90.2	83.8	78.3
Total	254.6	248.1	264.6	259.6	270.6	269	260.9	274.3	277.7	248.3	232.5

Actual Rake Loading Status (Power)

