

Monthly Coal Statistics for June'2022(Provisional)

Coal Production

India's coal production increased by 32.57% to 67.59 MT from 50.98 MT during June 22 as compared to June 21. During June 22, CIL, SCCL and Captives/ Others registered a growth of 28.87%, 5.50% & 83.53% by producing 51.56 MT, 5.56 MT & 10.47 MT respectively.

Coal Production

Fig. in MT

SI No	Subs	Monthly Target	Production during June 22				Production upto June 22		
			FY 23	Achmt.(%)	FY 22	Growth (%) (FY23-FY22)	FY 23	FY 22	Growth (%) (FY23-FY22)
1	ECL	3.60	2.57	71.39	2.15	19.53	8.50	7.92	7.32
2	BCCL	2.70	2.75	101.85	1.76	56.25	7.87	5.82	35.22
3	CCL	6.00	5.17	86.17	3.82	35.34	15.68	12.86	21.93
4	NCL	10.50	10.52	100.19	7.95	32.33	32.34	25.76	25.54
5	WCL	5.40	4.44	82.22	3.15	40.95	14.27	10.41	37.08
6	SECL	13.80	10.61	76.88	9.18	15.58	35.70	27.70	28.88
7	MCL	14.25	15.49	108.70	12.00	29.08	45.36	33.51	35.36
8	NEC	0.00	0.00		0.00		0.00	0.00	
CIL		56.25	51.56	91.67	40.01	28.87	159.75	123.98	28.85
9	SCCL	5.25	5.56	105.90	5.27	5.50	16.92	15.57	8.65
10	Captives/Others		10.47		5.70	83.53	28.89	16.30	77.21
Grand Total			67.59		50.98	32.57	205.56	155.85	31.89

Coking Coal Production

Fig. in MT

SI No	Subs	Production during June			Production upto June		
		FY 23	FY 22	Growth (%) (FY23-FY22)	FY 23	FY 22	Growth (%) (FY23-FY22)
1	ECL	0.00	0.00	-100.00	0.00	0.01	-100.00
2	BCCL	2.65	1.68	57.83	7.54	5.45	38.46
3	CCL	1.36	0.95	43.58	3.88	3.41	13.79
5	WCL	0.01	0.01	-42.86	0.03	0.05	-42.22
6	SECL	0.02	0.02	0.00	0.06	0.05	3.70
CIL		4.04	2.66	51.71	11.50	8.96	28.38

Coal Despatch

India's coal despatch increased by 20.69% to 75.46 MT from 62.53 MT during June 22 as compared to June 21. During June 22, CIL and Captives/Others registered a growth of 15.20% & 88.23% by despatching 58.98 & 11.05 MT respectively. However, SCCL registered a negative growth of 0.46% during the Month .

Coal Despatch

Fig. in MT

SI No	Subs	Monthly Target	Despatch during June				Despatch upto June		
			FY 23	Achmt.(%)	FY 22	Growth (%) (FY23-FY22)	FY 23	FY 22	Growth (%) (FY23-FY22)
1	ECL	3.00	2.71	90.33	3.11	-12.86	8.93	11.01	-18.89
2	BCCL	2.70	3.19	118.15	2.47	29.15	8.86	7.64	15.97
3	CCL	6.90	6.85	99.28	5.64	21.45	20.05	18.77	6.82

4	NCL	11.10	11.46	103.24	9.29	23.36	34.25	28.40	20.60
5	WCL	6.30	5.61	89.05	4.79	17.12	18.04	16.23	11.15
6	SECL	14.55	12.90	88.66	12.70	1.57	39.42	38.92	1.28
7	MCL	16.05	16.26	101.31	13.20	23.18	48.02	39.47	21.66
8	NEC	0.00	0.01		0.00		0.02	0.00	
CIL		60.60	58.98	97.33	51.20	15.20	177.59	160.44	10.69
9	SCCL	5.25	5.43	103.49	5.46	-0.46	17.31	16.69	3.67
10	Captives		10.57		5.87	80.02	29.46	18.07	62.97
Grand Total			74.98		62.53	19.92	224.35	195.21	14.93

The Power utilities despatch has grown by 30.77% to 64.89 MT during June 22 as compared to 49.62 MT in June 21 due to increase in power demand.

Coal Despatch to Different Sectors

Fig. in MT

Sectors	Despatch during June			Despatch upto June		
	FY 23	FY 22	Growth (%) (FY23-FY22)	FY 23	FY 22	Growth (%) (FY23-FY22)
Power	64.71	49.62	30.40	192.09	156.91	22.42
CPP	2.20	4.09	-46.19	7.59	12.00	-36.78
Steel	0.72	0.46	55.31	2.02	1.49	35.23
Cement	0.65	0.64	1.56	1.94	1.82	6.64
Sponge Iron	0.60	0.55	8.94	1.73	1.74	-0.80
Others	6.11	7.17	-14.73	18.98	21.24	-10.62
Total	74.98	62.53	19.92	224.35	195.21	14.93

Lignite Production

Fig. in MT

SI No	Company	Production during June			Production upto June		
		FY 23	FY 22	Growth (%) (FY23-FY22)	FY 23	FY 22	Growth (%) (FY23-FY22)
1	NLCIL	2.36	1.87	26.16	6.82	4.94	38.03
2	GMDCL	0.82	0.70	17.65	2.50	2.03	23.45
3	GIPCL	0.33	0.14	132.39	1.16	0.79	46.46
4	RSMML	0.06	0.14	-54.93	0.19	0.37	-48.93
5	BLMCL	0.73	0.51	41.52	1.42	1.24	13.83
6	GHCL	0.01	0.01	80.00	0.02	0.04	-45.00
7	VS Lignite	0.09	0.06	50.00	0.20	0.22	-7.80
8	GSPL	0.23	0.16	40.37	0.62	0.39	56.60
Grand Total		4.62	3.59	28.80	12.93	10.03	28.91

Lignite Despatch

Fig. in MT

SI No	Company	Despatch during June			Despatch upto June		
		FY 23	FY 22	Growth (%) (FY23-FY22)	FY 23	FY 22	Growth (%) (FY23-FY22)
1	NLCIL	2.55	2.57	-0.74	7.07	7.21	-1.90
2	GMDCL	0.82	0.70	17.65	2.50	2.03	23.45
3	GIPCL	0.33	0.14	132.39	1.16	0.79	46.46
4	RSMML	0.06	0.14	-54.93	0.19	0.37	-48.93
5	BLMCL	0.75	0.52	44.89	1.83	1.38	32.61
6	GHCL	0.01	0.00	300.00	0.02	0.02	-6.25
7	VS Lignite	0.08	0.05	63.83	0.19	0.21	-7.73
8	GSPL	0.23	0.15	52.94	0.48	0.32	46.91
Grand Total		4.83	4.27	13.22	13.43	12.33	8.98

Power Generation

Fig in MU

Source-wise	Jun-22	% share	Jun-21	May-22	Growth(%) (June'22- June'21)	Growth(%) (June'22-May22)
Coal	95880	68.98	75747	98609	26.58	-2.77
Lignite	3093	2.23	2461	2758	25.68	12.15
Hydro	15253	10.97	17525	13621	-12.96	11.98
Nuclear	3537	2.54	3513	3162	0.68	11.86
Gas, Naptha & Diesel	2130	1.53	3010	2126	-29.24	0.19
RES (Wind, Solar, Biomass & Others)	19102	13.74	15805	19783	20.86	-3.44
Total	138995	100.00	118061	140059	17.73	-0.76

Coal based power generation has registered a growth of 26.58% in June 2022 as compared to June 2021. The overall power generation in June 2022 has been 17.73% higher than the power generated in June 2021. However, Coal based power generation in the month of June 2022 has been 95880 MU in comparison to 98609 MU in May 2022 and registered a negative growth of 2.77 %. Total power generation has also decreased in June 2022 to 138995 MU from 140059 MU in May 2022 and registered a negative growth of 0.76 %.

Electricity Prices and Clearing Volume in Indian Energy Exchange

Item	Type	During the period of June		
		FY 23	FY 22	Growth (%)
Energy Prices (INR per MWh)	RTC	6492.65	3061.88	112.05
	Evening	8306.77	3849.6	115.78
	Day	4491.95	2359.72	90.36
	Night	8309.09	3439.37	141.59
	Morning	4093.9	2448.49	67.20
Market Clearing Volume (BU)	RTC	5673.6	5995.16	-5.36
	Evening	5962.04	6309.03	-5.50
	Day	5250.61	5365.14	-2.13
	Night	6000.63	5945.12	0.93
	Morning	5408.89	6714.5	-19.44
	Total	4084994.77	4316518.05	-5.36

Despatch of Coal By CIL

Fig. in MT

Sectors	Coal Despatch during June			Coal Despatch upto June		
	FY 23	FY 22	Growth (%) (FY23-FY22)	FY 23	FY 22	Growth (%) (FY23-FY22)
Power	51.09	39.67	28.79	152.49	126.47	20.57
CPP	1.77	3.71	-52.33	6.24	10.79	-42.16
Steel	0.26	0.12	118.49	0.74	0.36	105.56
Cement	0.29	0.37	-20.98	0.86	1.06	-18.87
Sponge Iron	0.56	0.54	3.70	1.62	1.71	-5.43
Others	5.01	6.79	-26.23	15.64	20.05	-21.99
Total	58.98	51.20	15.20	177.59	160.44	10.69

Despatch of Coal By SCCL

Fig. in MT

Sectors	Coal Despatch during June			Coal Despatch upto June		
	FY 23	FY 22	Growth (%) (FY23-FY22)	FY 23	FY 22	Growth (%) (FY23-FY22)
Power	4.52	4.59	-1.44	14.42	13.86	4.05
CPP	0.22	0.24	-6.72	0.65	0.89	-26.19
Steel						
Cement	0.23	0.25	-6.40	0.79	0.73	8.09
Sponge Iron	0.04	0.01	362.50	0.11	0.03	272.41
Others	0.42	0.38	11.67	1.33	1.19	12.30
Total	5.43	5.46	-0.46	17.31	16.69	3.67

Coal Despatch to Different Sectors by Captive and Others

Fig. in MT

Sectors	Coal Despatch during June			Coal Despatch upto June		
	FY 23	FY 22	Growth (%) (FY23-FY22)	FY 23	FY 22	Growth (%) (FY23-FY22)
Power	9.096	5.37	69.51	25.18	16.58	51.89
CPP	0.21	0.14	50.36	0.69	0.33	110.94
Steel	0.46	0.34	33.33	1.28	1.13	12.83
Cement	0.13	0.02	447.83	0.30	0.03	770.59
Sponge Iron						
Others	0.682	0.001	68100	2.01	0.00	66933
Total	10.57	5.87	80.02	29.46	18.07	62.97

Top 37 Mines Production during June 2022 (provisional)

Sr. No	Subsidiary	Mines	Annual Target (MT)	Prod. during Apr 2022 (MT)	Prod. during May 2022 (MT)	Prod. during June 2022 (MT)	Target upto June 2022 (MT)	Prod. Upto June 2022 (MT)	Achievement
1	ECL	Rajmahal	16	0.40	0.52	0.35	2.98	1.27	42.70%
2	ECL	Sonepur Bazari	11	0.99	0.98	0.92	2.87	2.90	100.88%
3	CCL	Amrapali	21	1.45	1.63	1.10	4.83	4.19	86.83%
4	CCL	Magadh	14	0.75	1.01	1.12	3.22	2.88	89.44%
5	CCL	Ashoka	9	0.89	0.83	0.78	2.07	2.50	120.75%
6	CCL	AKK	5	0.42	0.43	0.49	1.15	1.34	116.86%
7	NCL	Jayant	24	2.04	2.07	2.04	6.10	6.15	100.82%
8	NCL	Dudhichua	22	1.96	1.79	1.64	5.59	5.39	96.41%
9	NCL	Nigahi	21	2.01	2.01	1.96	5.34	5.98	112.15%
10	NCL	Amlohri	14	1.08	1.03	0.92	3.56	3.04	85.38%
11	NCL	Khadia	14	1.28	1.41	1.41	3.56	4.10	115.18%
12	NCL	Bina	10.5	0.90	1.00	1.00	2.67	2.90	108.59%
13	NCL	Krishnashila	7	0.61	0.66	0.61	1.78	1.87	105.36%
14	NCL	Block-B	5.47	0.49	0.58	0.52	1.39	1.59	114.25%
15	WCL	Penganga	6.3	0.63	0.50	0.53	1.45	1.67	114.91%
16	WCL	Mungoli	4.375	0.17	0.23	0.07	1.01	0.47	46.19%
17	WCL	Niljai Deep	4	0.29	0.25	0.31	0.92	0.86	93.21%
18	WCL	Makardhokra I	0	0.38	0.44	0.32	0.92	1.15	124.34%
19	SECL	Gevra	52	3.98	4.14	3.85	12.93	11.97	92.56%
20	SECL	Kumunda	45	3.20	2.70	2.34	10.33	8.24	79.80%
21	SECL	Dipka	38	2.50	2.08	1.47	8.79	6.05	68.85%
22	SECL	Manikpur	4.90	0.47	0.48	0.44	1.13	1.39	123.11%
23	SECL	Gare Pelma IV/2&3	4.00	0.28	0.25	0.21	0.92	0.73	79.26%
24	MCL	Bhubaneswari	28	2.54	2.64	2.59	6.92	7.77	112.34%
25	MCL	Lakhanpur	21	1.84	2.03	2.02	5.25	5.88	112.08%
26	MCL	Kulda	18.5	1.50	1.68	1.70	4.65	4.88	104.89%
27	MCL	Garjanbahal	15.16	1.27	1.21	1.35	3.62	3.84	106.06%
28	MCL	Ananta	14	1.09	1.11	1.19	3.34	3.39	101.56%
29	MCL	Lingaraj	14	1.35	1.44	1.46	3.34	4.25	127.38%
30	MCL	Bharatpur	10	0.86	0.82	0.57	2.39	2.25	94.52%
31	MCL	Kaniha	10	0.88	1.01	1.06	2.39	2.95	123.77%
32	MCL	Hingula	10	0.64	0.86	0.83	2.39	2.34	98.00%
33	MCL	Jagannath	7.5	0.44	0.62	0.57	1.79	1.62	90.78%
34	MCL	Belpahar	7.5	0.39	0.34	0.36	1.79	1.09	61.13%
35	MCL	Balram	6.5	0.56	0.66	0.72	1.55	1.93	124.69%
36	MCL	Samaleswari	5	0.44	0.48	0.46	1.19	1.38	115.49%
37	MCL	Lajkura	4.5	0.36	0.49	0.44	1.07	1.28	119.54%
Total			524.21	41.33	42.40	39.75	127.15	123.48	97.11%

Particulars	No. of Mines
Mines produced more than 100%	22
Mines produced more than 80% , but less than 100%	9
Mines produced more than 50% , but less than 80%	4
Mines produced less than 50%	2

Top 37 OBR during June 2022 (provisional)

Sr. No	Subsidiary	Mines	Annual OBR Target (M.Cum)	OBR during Apr 2022 (M.Cum)	OBR during May 2022 (M.Cum)	OBR during June 2022 (M.Cum)	Target upto June 2022 (M.Cum)	OBR upto June 2022 (M.Cum)	Achievement
1	ECL	Rajmahal	24.1	1.67	1.25	0.64	6.83	3.56	52.12%
2	ECL	Sonepur Bazari	60.7	6.55	6.02	5.71	15.25	18.28	119.88%
3	CCL	Amrapali	24	1.48	1.49	1.16	5.52	4.13	74.90%
4	CCL	Magadh	18	1.25	1.45	1.20	4.14	3.91	94.49%
5	CCL	Ashoka	12	0.38	0.66	0.71	2.76	1.74	63.17%
6	CCL	AKK	8	0.84	0.87	0.82	1.84	2.53	137.33%
7	NCL	Jayant	53	5.60	5.63	5.07	13.04	16.30	125.02%
8	NCL	Dudhichua	72	5.51	5.74	5.49	17.90	16.74	93.55%
9	NCL	Nigahi	80	5.70	5.72	5.74	19.94	17.16	86.07%
10	NCL	Amlohri	59.5	5.44	5.38	4.95	15.08	15.77	104.57%
11	NCL	Khadia	51	4.66	4.35	3.75	12.55	12.75	101.64%
12	NCL	Bina	40.8	4.14	4.55	4.33	10.37	13.02	125.62%
13	NCL	Krishnashila	18.5	2.00	1.96	1.74	4.70	5.70	121.22%
14	NCL	Block-B	15	1.49	1.40	1.40	3.82	4.28	112.05%
15	WCL	Penganga	21	0.66	0.69	1.59	5.56	2.94	52.89%
16	WCL	Mungoli	22	0.31	1.14	0.94	5.82	2.39	41.11%
17	WCL	Niljai Deep	35.2	2.60	2.72	2.53	9.33	7.85	84.21%
18	WCL	Makardhokra I	18	1.84	2.08	1.43	4.77	5.35	112.10%
19	SECL	Gevra	68	5.95	6.51	5.90	17.00	18.36	107.99%
20	SECL	Kusmunda	57	4.75	4.82	3.94	14.25	13.51	94.83%
21	SECL	Dipka	39	1.70	1.28	1.18	9.75	4.15	42.53%
22	SECL	Manikpur	12	1.39	1.35	1.17	3.00	3.91	130.50%
23	SECL	Gare Pelma IV/2&3	10	0.57	0.41	0.15	2.50	1.14	45.51%
24	MCL	Bhubaneswari	16	0.73	0.56	0.64	4.40	1.93	43.87%
25	MCL	Lakhanpur	40	3.16	3.26	2.19	11.00	8.62	78.34%
26	MCL	Kulda	15.5	1.24	1.27	1.30	4.26	3.81	89.30%
27	MCL	Garjanbahal	11	1.05	1.36	1.27	3.03	3.69	121.83%
28	MCL	Ananta	24.5	2.86	2.67	2.66	7.43	8.19	110.27%
29	MCL	Lingaraj	12	1.80	1.67	1.56	3.30	5.03	152.32%
30	MCL	Bharatpur	10	0.78	0.90	0.96	2.75	2.63	95.73%
31	MCL	Kaniha	7	0.57	0.54	0.63	1.93	1.73	90.01%
32	MCL	Hingula	13	1.12	1.00	1.13	4.26	3.24	76.12%
33	MCL	Jagannath	7	0.85	0.74	0.72	1.93	2.31	119.79%
34	MCL	Belpahar	10	0.59	0.83	0.36	2.75	1.78	64.77%
35	MCL	Balram	14.5	1.38	1.06	1.26	3.99	3.70	92.77%
36	MCL	Samaleswari	12	0.73	1.00	1.08	3.30	2.81	85.08%
37	MCL	Lajkura	10	1.14	1.05	0.93	2.75	3.11	113.27%
Total			1021.30	84.49	85.35	78.22	262.76	248.05	94.40%

Particulars		
Mines produced more than 100%		16
Mines produced more than 80% , but less than 100%		10
Mines produced more than 50% , but less than 80%		7
Mines produced less than 50%		4

Coal Production in mines of all Subsidiaries of CIL (provisional data)

Fig. in MT

SI No	Subs	Types of Mines	No of Mines	Annual Target (MT)	During June			Upto June		
					FY 23	FY 22	Growth (%) M-O-M	FY 23	FY 22	Growth (%) Y-O-Y
1	ECL	Top 37	2	27.00	1.28	0.89	43.82	4.17	3.60	15.83
		Others	2	4.30	0.25	0.36	-30.56	0.88	0.96	-8.33
		Top 75	4	31.30	1.53	1.25	22.40	5.05	4.56	10.75
		Rest	74	18.70	1.04	0.90	15.56	3.45	3.36	2.68
	Overall ECL	78	50.00	2.57	2.15	19.53	8.50	7.92	7.32	
2	BCCL	Top 37	0	0.00	0.00	0.00		0.00	0.00	
		Others	6	18.08	1.41	1.04	35.58	4.13	3.56	16.01
		Top 75	6	18.08	1.41	1.04	35.58	4.13	3.56	16.01
		Rest	24	13.92	1.34	0.72	86.11	3.74	2.26	65.49
	Overall BCCL	30	32.00	2.75	1.76	56.25	7.87	5.82	35.22	
3	CCL	Top 37	4	49.00	3.50	2.41	45.23	10.92	8.01	36.33
		Others	5	12.55	0.78	0.78	0.00	2.21	2.65	-16.60
		Top 75	9	61.55	4.28	3.19	34.17	13.13	10.66	23.17
		Rest	33	14.45	0.89	0.63	41.27	2.55	2.20	15.91
	Overall CCL	42	76.00	5.17	3.82	35.34	15.68	12.86	21.93	
4	MCL	Top 37	14	171.66	15.32	11.91	28.63	44.86	33.19	35.16
		Rest	5	4.34	0.17	0.09	88.89	0.50	0.32	56.25
	Overall MCL	19	176.00	15.49	12.00	29.08	45.36	33.51	35.36	
5	NCL	Top 37	8	117.97	10.09	7.67	31.55	31.02	24.80	25.08
		Others	2	4.03	0.43	0.28	53.57	1.32	0.95	38.95
		Top 75	10	122.00	10.52	7.95	32.33	32.34	25.75	25.59
		Rest	0	0.00	0.00	0.00		0.00	0.00	
	Overall NCL	10	122.00	10.52	7.95	32.33	32.34	25.76	25.54	
6	SECL	Top 37	5	143.90	8.32	7.29	14.13	28.38	21.26	33.49
		Others	10	21.81	1.21	0.77	57.14	4.11	3.08	33.44
		Top 75	15	165.71	9.53	8.06	18.24	32.49	24.34	33.48
		Rest	55	16.29	1.08	1.12	-3.57	3.21	3.36	-4.46
	Overall SECL	70	182.00	10.61	9.18	15.58	35.70	27.70	28.88	
7	WCL	Top 37	4	18.68	1.23	1.02	20.59	4.14	3.51	17.95
		Others	13	28.36	2.12	0.89	138.20	6.77	2.95	129.49
		Top 75	17	47.04	3.35	1.91	75.39	10.91	6.46	68.89
		Rest	43	14.96	1.09	1.24	-12.10	3.36	3.95	-14.94
	Overall WCL	60	62.00	4.44	3.15	40.95	14.27	10.41	37.08	
8	CIL	Top 37	37	528.21	39.74	31.19	27.41	123.49	94.37	30.86
		Others	38	89.13	6.20	4.12	50.49	19.42	14.15	37.24
		Top 75	75	617.34	45.94	35.31	30.10	142.91	108.52	31.69
		Rest of mines	234	82.66	5.62	4.70	19.57	16.88	15.46	9.18
	Overall CIL	309	700.00	51.56	40.01	28.87	159.75	123.98	28.85	

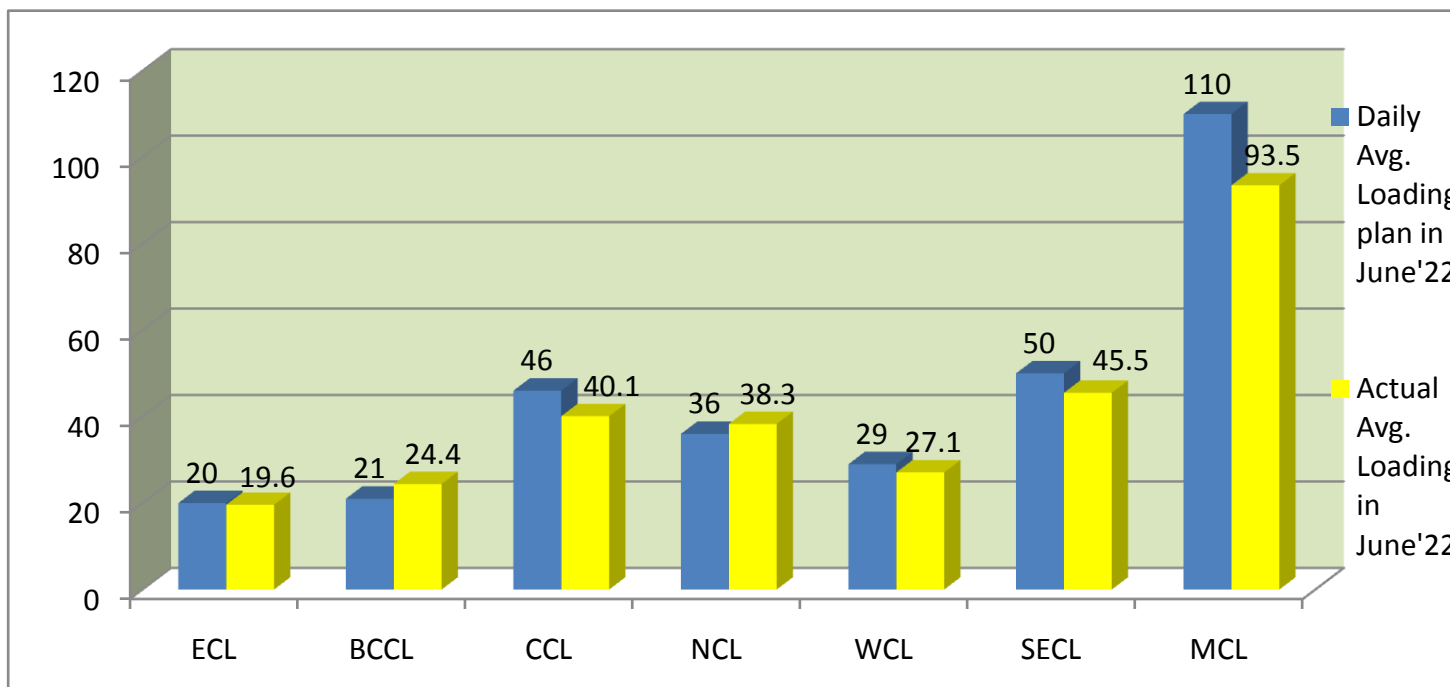
Top 75 = Top 37 + others mines including in top 75 mines

Rest of Mines = other than top 75

Overall Mines = Top 75 + rest of mines

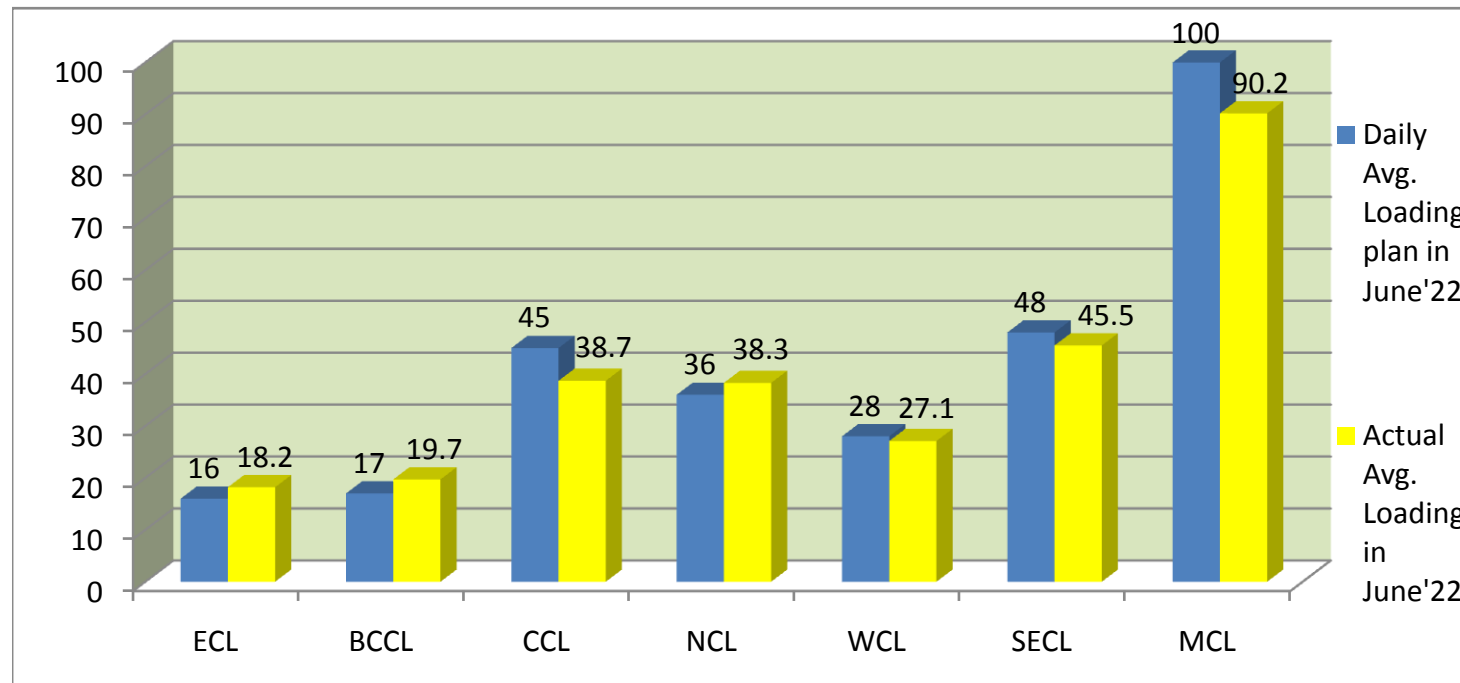
COMPANY-WISE MOVEMENT OF RAKES FOR ALL SECTORS PER DAY IN JUNE '22 (Prov.)

COMPANY	Daily Avg. Loading plan in June'22	Actual Avg. Loading in June'22	Achievemnt (%)	Actual Avg. Loading in June'21	Growth% (June'21 to June'22)
ECL	20	19.6	98	19.1	3
BCCL	21	24.4	116	20.3	20
CCL	46	40.1	87	42.9	-6.53
NCL	36	38.3	106	26.8	43
WCL	29	27.1	93	27	0
SECL	50	45.5	91	47.2	-3.60
MCL	110	93.5	85	79.5	18
Total	312	288.5	92	262.8	10



COMPANY-WISE MOVEMENT OF RAKES FOR POWER SECTOR PER DAY IN JUNE '22 (Prov.)

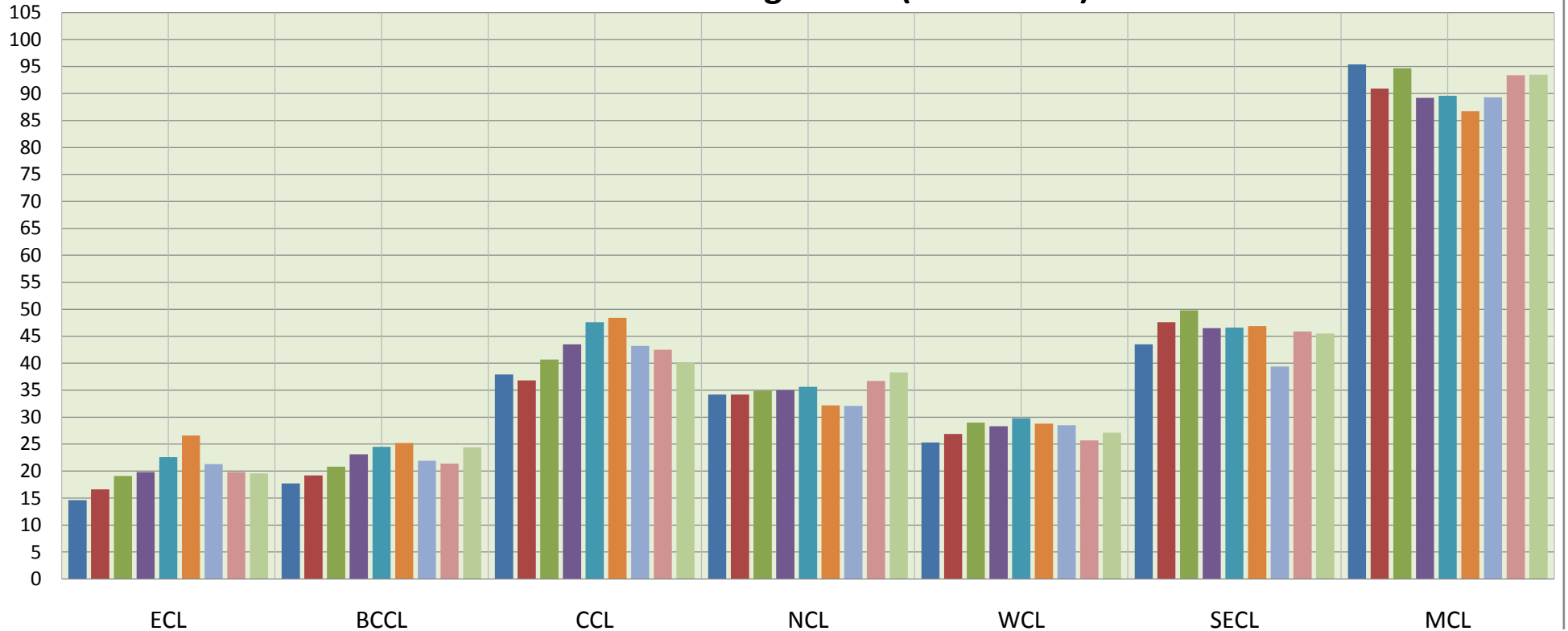
COMPANY	Daily Avg. Loading plan in June'22	Actual Avg. Loading in June'22	Achievemnt (%)	Actual Avg. Loading in June'21	Growth% (June'21 to June'22)
ECL	16	18.2	114	16.5	10
BCCL	17	19.7	116	17.5	13
CCL	45	38.7	86	39.3	-2
NCL	36	38.3	106	24.5	56
WCL	28	27.1	97	25.3	7
SECL	48	45.5	95	39.3	16
MCL	100	90.2	90	59.4	52
Total	290	277.7	96	221.8	25



COMPANY-WISE MOVEMENT OF RAKES FOR ALL SECTORS PER DAY DURING OCT'21 TO JUNE'22(Provisional)

COMPANY	Average loading in								
	Oct'21	Nov'21	Dec'21	Jan'22	Feb'22	Mar'22	Apr'22	May'22	June'22
ECL	14.6	16.6	19.1	19.8	22.6	26.6	21.3	19.8	19.6
BCCL	17.7	19.2	20.8	23.1	24.5	25.2	21.9	21.4	24.4
CCL	37.9	36.8	40.7	43.5	47.6	48.4	43.2	42.5	40.1
NCL	34.2	34.2	34.9	35	35.6	32.2	32.1	36.7	38.3
WCL	25.3	26.9	29	28.3	29.8	28.8	28.5	25.7	27.1
SECL	43.5	47.6	49.8	46.5	46.6	46.9	39.4	45.9	45.5
MCL	95.4	90.9	94.7	89.2	89.6	86.7	89.3	93.4	93.5
Total	268.6	272.2	289	285.4	296.3	294.8	275.8	285.3	288.5

Actual Rakes Loading Status (All Sectors)



- Average loading in Oct'21
- Average loading in Nov'21
- Average loading in Dec'21
- Average loading in Jan'22
- Average loading in Feb'22
- Average loading in Mar'22
- Average loading in Apr'22
- Average loading in May'22
- Average loading in June'22

COMPANY-WISE MOVEMENT OF RAKES FOR POWER SECTOR PER DAY DURING OCT'21 TO JUNE'22(Provisional)

COMPANY	Average loading in								
	Oct'21	Nov'21	Dec'21	Jan'22	Feb'22	Mar'22	Apr'22	May'22	June'22
ECL	14.5	15.6	18.1	18.1	17.1	19.5	17.7	17.5	18.2
BCCL	14.8	15.7	17.2	18.7	20.8	21.7	18.7	18	19.7
CCL	36.3	34	37.6	40.5	45	45.9	41.8	41.1	38.7
NCL	33.9	34	34.7	34.9	34.8	31.8	32.1	36.7	38.3
WCL	25.3	26.9	28.9	28.3	29.7	28.8	28.5	25.7	27.1
SECL	41.5	42.7	45	41.1	42.3	43	38.5	45.9	45.5
MCL	88.3	79.2	83.1	78	80.9	78.3	83.6	89.3	90.2
Total	254.6	248.1	264.6	259.6	270.6	269	260.9	274.3	277.7

Actual Rake Loading Status (Power)

