

Monthly Coal Statistics for May'2022(Provisional)

Coal Production

India's coal production increased by 33.88% to 71.30 MT from 53.25 MT during May 22 as compared to May 21. During May 22, CIL, SCCL and Captives/ Others registered a growth of 30.04%, 11.01% & 83.33% by producing 54.72 MT, 6.04 MT & 10.54 MT respectively.

Coal Production

Fig. in MT

SI No	Subs	Monthly Target	Production during May 22				Production upto May 22		
			FY 23	Achmt.(%)	FY 22	Growth (%) (FY23-FY22)	FY 23	FY 22	Growth (%) (FY23-FY22)
1	ECL	4.03	2.92	72.46	2.83	3.18	5.92	5.77	2.60
2	BCCL	2.79	2.65	94.98	2.11	25.59	5.12	4.06	26.11
3	CCL	6.51	5.51	84.64	4.21	30.88	10.51	9.05	16.13
4	NCL	10.85	11.01	101.47	9.24	19.16	21.82	17.81	22.52
5	WCL	5.58	4.84	86.74	3.61	34.07	9.83	7.25	35.59
6	SECL	14.42	12.21	84.67	9.21	32.57	25.08	18.52	35.42
7	MCL	14.73	15.56	105.63	10.87	43.15	29.87	21.51	38.87
8	NEC	0.00	0.03		0.00		0.04	0.00	
CIL		58.91	54.72	92.89	42.08	30.04	108.19	83.97	28.84
9	SCCL	5.93	6.04	101.84	5.44	11.01	11.36	10.30	10.29
10	Captives/Others		10.54		5.73	83.83	18.43	10.60	73.82
Grand Total			71.30		53.25	33.88	137.98	104.87	31.57

Coking Coal Production

Fig. in MT

SI No	Subs	Production during May			Production upto May		
		FY 23	FY 22	Growth (%) (FY23-FY22)	FY 23	FY 22	Growth (%) (FY23-FY22)
1	ECL	0.00	0.00	-100.00	0.00	0.00	-100.00
2	BCCL	2.49	1.95	27.61	4.89	3.77	29.83
3	CCL	1.28	1.09	17.36	2.51	2.46	2.12
5	WCL	0.01	0.02	-43.75	0.02	0.03	-41.94
6	SECL	0.02	0.02	0.00	0.04	0.04	5.56
CIL		3.80	3.08	23.41	7.46	6.30	18.46

Coal Despatch

India's coal despatch increased by 16.05% to 77.83 MT from 67.06 MT during May 22 as compared to May 20. During May 22, CIL, SCCL and Captives/Others registered a growth of 11.34%, 5.66% & 67.06% by despatching 61.24 MT, 6.13 MT & 10.46 MT respectively.

Coal Despatch

Fig. in MT

SI No	Subs	Monthly Target	Despatch during May				Despatch upto May		
			FY 23	Achmt.(%)	FY 22	Growth (%) (FY23-FY22)	FY 23	FY 22	Growth (%) (FY23-FY22)
1	ECL	3.41	3.11	91.20	3.81	-18.37	6.26	7.90	-20.76
2	BCCL	2.79	2.91	104.30	2.67	8.99	5.69	5.16	10.27
3	CCL	6.98	7.08	101.43	6.50	8.92	13.25	13.13	0.91

4	NCL	11.63	11.66	100.26	9.69	20.33	22.79	19.11	19.26
5	WCL	6.67	6.08	91.15	5.79	5.01	12.43	11.43	8.75
6	SECL	14.88	13.68	91.94	13.28	3.01	26.52	26.22	1.14
7	MCL	16.43	16.71	101.70	13.27	25.92	31.75	26.27	20.86
8	NEC	0.00	0.01		0.00		0.01	0.00	
CIL		62.78	61.24	97.54	55.00	11.34	118.70	109.24	8.66
9	SCCL	5.93	6.13	103.34	5.80	5.66	11.87	11.24	5.64
10	Captives		10.46		6.26	67.06	18.89	12.20	54.81
Grand Total			77.83		67.06	16.05	149.47	132.68	12.65

The Power utilities despatch has grown by 22.36% to 66.27 MT during May 22 as compared to 54.16 MT in May 21 due to increase in power demand.

Coal Despatch to Different Sectors

Fig. in MT

Sectors	Despatch during May			Despatch upto May		
	FY 23	FY 22	Growth (%) (FY23-FY22)	FY 23	FY 22	Growth (%) (FY23-FY22)
Power	66.27	54.16	22.36	127.81	106.97	19.49
CPP	2.88	4.45	-35.24	5.41	7.91	-31.67
Steel	0.64	0.54	19.07	1.30	1.03	26.24
Cement	0.66	0.58	12.71	1.21	1.18	2.62
Sponge Iron	0.51	0.52	-3.25	1.02	1.19	-14.49
Others	6.88	6.80	1.10	12.72	14.40	-11.66
Total	77.83	67.06	16.07	149.47	132.68	12.65

Lignite Production

Fig. in MT

SI No	Company	Production during May			Production upto May		
		FY 23	FY 22	Growth (%) (FY23-FY22)	FY 23	FY 22	Growth (%) (FY23-FY22)
1	NLCIL	2.02	1.63	24.10	4.46	3.07	45.25
2	GMDCL	0.88	0.61	43.86	1.68	1.33	26.49
3	GIPCL	0.38	0.29	31.71	0.75	0.65	14.62
4	RSMML	0.05	0.11	-50.93	0.13	0.23	-45.26
5	BLMCL	0.51	0.34	47.66	0.69	0.73	-5.61
6	GHCL	0.01	0.01	18.18	0.01	0.04	-62.86
7	VS Lignite	0.04	0.09	-52.22	0.11	0.16	-28.75
8	GSPL	0.27	0.23	17.17	0.39	0.23	67.81
Grand Total		4.17	3.31	25.81	8.22	6.44	27.65

Lignite Despatch

Fig. in MT

SI No	Company	Despatch during May			Despatch upto May		
		FY 23	FY 22	Growth (%) (FY23-FY22)	FY 23	FY 22	Growth (%) (FY23-FY22)
1	NLCIL	2.56	2.39	7.15	4.53	4.65	-2.54
2	GMDCL	0.88	0.61	43.86	1.68	1.33	26.49
3	GIPCL	0.38	0.29	31.71	0.75	0.65	14.62
4	RSMML	0.05	0.11	-50.93	0.13	0.23	-45.26
5	BLMCL	0.57	0.38	49.74	1.07	0.86	25.17
6	GHCL	0.01	0.01	0.00	0.01	0.01	-50.00
7	VS Lignite	0.06	0.08	-18.67	0.11	0.16	-28.75
8	GSPL	0.16	0.10	57.28	0.24	0.17	41.52
Grand Total		4.67	3.96	17.89	8.52	8.06	5.68

Power Generation

Fig in MU

Source-wise	May-22	% share	May-21	Apr-22	Growth(%) (May'22-May'21)	Growth(%) (May'22-Apr22)
Coal	98609	70.41	78150	102529	26.18	-3.82
Lignite	2758	1.97	2389	2311	15.45	19.34
Hydro	13621	9.73	12612	12270	8.00	11.01
Nuclear	3162	2.26	3627	3157	-12.82	0.16
Gas, Naptha & Diesel	2126	1.52	3084	2270	-31.06	-6.34
RES (Wind, Solar, Biomass & Others)	19783	14.12	13708	13928	44.32	42.04
Total	140059	100.00	113570	136465	23.32	2.63

Coal based power generation has registered a growth of 26.18% in May 2022 as compared to May 2021. The overall power generation in May 2022 has been 23.32% higher than the power generated in Apr 2021 and 2.63% higher than power generated in Apr 2022. Coal based power generation in the month of May 2022 has been 98609 MU in comparison to 102529 MU in Apr 2022 and registered a negative growth of 3.82 %. However, total power generation has increased in May 2022 to 140059 MU from 136465 MU in Apr 2022 due to Hydro and Wind energy.

Electricity Prices and Clearing Volume in Indian Energy Exchange

Item	Type	During the period of May		
		FY 23	FY 22	Growth (%)
Energy Prices (INR per MWh)	RTC	6757.06	2827.01	139.02
	Evening	8125.42	3227.93	151.72
	Day	5634.88	2473.65	127.80
	Night	7731.27	3039.37	154.37
	Morning	4963.48	2472.38	100.76
Market Clearing Volume (BU)	RTC	4264.12	5865.43	-27.30
	Evening	4290.45	6434.96	-33.33
	Day	4391.74	5391.32	-18.54
	Night	4193.94	5617.95	-25.35
	Morning	4124.08	6273.92	-34.27
	Total	3172502.43	4363880.18	-27.30

Despatch of Coal By CIL

Fig. in MT

Sectors	Coal Despatch during May			Coal Despatch upto May		
	FY 23	FY 22	Growth (%) (FY23-FY22)	FY 23	FY 22	Growth (%) (FY23-FY22)
Power	52.14	43.64	19.48	101.82	86.48	17.75
CPP	2.42	4.02	-39.74	4.49	7.08	-36.54
Steel	0.24	0.14	67.83	0.48	0.24	99.17
Cement	0.25	0.30	-16.94	0.49	0.69	-29.29
Sponge Iron	0.47	0.52	-8.74	0.95	1.17	-19.01
Others	5.72	6.39	-10.42	10.47	13.58	-22.92
Total	61.24	55.00	11.35	118.70	109.24	8.66

Despatch of Coal By SCCL

Fig. in MT

Sectors	Coal Despatch during May			Coal Despatch upto May		
	FY 23	FY 22	Growth (%) (FY23-FY22)	FY 23	FY 22	Growth (%) (FY23-FY22)
Power	5.08	4.80	5.94	9.91	9.28	6.76
CPP	0.24	0.30	-21.93	0.43	0.65	-33.33
Steel						
Cement	0.30	0.27	11.48	0.55	0.48	15.66
Sponge Iron	0.04	0.01	350.00	0.07	0.02	238.10
Others	0.48	0.42	13.88	0.91	0.81	12.59
Total	6.13	5.79	5.80	11.87	11.24	5.68

Coal Despatch to Different Sectors by Captive and Others

Fig. in MT

Sectors	Coal Despatch during May			Coal Despatch upto May		
	FY 23	FY 22	Growth (%) (FY23-FY22)	FY 23	FY 22	Growth (%) (FY23-FY22)
Power	9.046	5.72	58.09	16.084	11.21	43.45
CPP	0.23	0.13	71.21	0.49	0.19	155.26
Steel	0.40	0.40	1.51	0.82	0.79	3.93
Cement	0.11	0.01	854.55	0.17	0.01	1445.45
Sponge Iron						
Others	0.683	0.001	68200	1.33	0.00	66600
Total	10.46	6.26	67.06	18.89	12.20	54.81

Top 37 Mines Production during May 2022 (provisional)

Sr. No	Subsidiary	Mines	Annual Target (MT)	Prod. during Apr 2022 (MT)	Prod. during May 2022 (MT)	Target upto May 2022 (MT)	Prod. Upto May 2022 (MT)	Achievement
1	ECL	Rajmahal	16	0.40	0.52	1.94	0.92	47.51%
2	ECL	Sonepur Bazari	11	0.99	0.98	1.92	1.97	102.61%
3	CCL	Amrapali	21	1.45	1.63	3.24	3.09	95.48%
4	CCL	Magadh	14	0.75	1.01	2.16	1.75	81.32%
5	CCL	Ashoka	9	0.89	0.83	1.39	1.72	123.70%
6	CCL	AKK	5	0.42	0.43	0.77	0.85	110.18%
7	NCL	Jayant	24	2.04	2.07	4.09	4.11	100.50%
8	NCL	Dudhichua	22	1.96	1.79	3.75	3.75	100.04%
9	NCL	Nigahi	21	2.01	2.01	3.58	4.03	112.64%
10	NCL	Amlohri	14	1.08	1.03	2.38	2.11	88.70%
11	NCL	Khadia	14	1.28	1.41	2.38	2.69	112.76%
12	NCL	Bina	10.5	0.90	1.00	1.79	1.90	106.23%
13	NCL	Krishnashila	7	0.61	0.66	1.19	1.27	106.35%
14	NCL	Block-B	5.47	0.49	0.58	0.93	1.07	114.56%
15	WCL	Penganga	6.3	0.63	0.50	1.02	1.14	111.96%
16	WCL	Mungoli	4.375	0.17	0.23	0.71	0.39	55.78%
17	WCL	Niljai Deep	4	0.29	0.25	0.64	0.55	84.88%
18	WCL	Makardhokra I	0	0.38	0.44	0.64	0.83	128.39%
19	SECL	Gevra	52	3.98	4.14	8.73	8.11	92.94%
20	SECL	Kusmunda	45	3.20	2.70	6.96	5.90	84.82%
21	SECL	Dipka	38	2.50	2.08	5.94	4.58	77.09%
22	SECL	Manikpur	4.90	0.47	0.48	0.76	0.94	124.39%
23	SECL	Gare Pelma IV/2&3	4.00	0.28	0.25	0.62	0.52	84.02%
24	MCL	Bhubaneswari	28	2.54	2.64	4.64	5.18	111.66%
25	MCL	Lakhanpur	21	1.84	2.03	3.52	3.87	109.91%
26	MCL	Kulda	18.5	1.50	1.68	3.12	3.18	102.07%
27	MCL	Garjanbahal	15.16	1.27	1.21	2.42	2.48	102.36%
28	MCL	Ananta	14	1.09	1.11	2.24	2.20	98.20%
29	MCL	Lingaraj	14	1.35	1.44	2.24	2.79	124.77%
30	MCL	Bharatpur	10	0.86	0.82	1.60	1.68	105.33%
31	MCL	Kaniha	10	0.88	1.01	1.60	1.89	118.25%
32	MCL	Hingula	10	0.64	0.86	1.60	1.50	93.99%
33	MCL	Jagannath	7.5	0.44	0.62	1.20	1.05	87.86%
34	MCL	Belpahar	7.5	0.39	0.34	1.20	0.73	60.78%
35	MCL	Balram	6.5	0.56	0.66	1.04	1.22	116.95%
36	MCL	Samaleswari	5	0.44	0.48	0.80	0.92	115.25%
37	MCL	Lajkura	4.5	0.36	0.49	0.72	0.85	117.75%
Total			524.21	41.33	42.40	85.45	83.73	97.99%

Particulars	No. of Mines
Mines produced more than 100%	23
Mines produced more than 80% , but less than 100%	10
Mines produced more than 50% , but less than 80%	3
Mines produced less than 50%	1

Top 37 OBR during May 2022 (provisional)

Sr. No	Subsidiary	Mines	Annual OBR Target (M.Cum)	OBR during Apr 2022 (M.Cum)	OBR during May 2022 (M.Cum)	Target upto May 2022 (M.Cum)	OBR upto May 2022 (M.Cum)	Achievement
1	ECL	Rajmahal	24.1	1.67	1.25	4.61	2.92	63.45%
2	ECL	Sonepur Bazari	60.7	6.55	6.02	10.85	12.57	115.85%
3	CCL	Amrapali	24	1.48	1.49	3.70	2.97	80.38%
4	CCL	Magadh	18	1.25	1.45	2.77	2.71	97.53%
5	CCL	Ashoka	12	0.38	0.66	1.85	1.04	56.03%
6	CCL	AKK	8	0.84	0.87	1.23	1.71	138.69%
7	NCL	Jayant	53	5.60	5.63	9.02	11.23	124.49%
8	NCL	Dudhichua	72	5.51	5.74	12.26	11.25	91.76%
9	NCL	Nigahi	80	5.70	5.72	13.63	11.42	83.74%
10	NCL	Amlohri	59.5	5.44	5.38	10.13	10.82	106.73%
11	NCL	Khadia	51	4.66	4.35	8.69	9.00	103.60%
12	NCL	Bina	40.8	4.14	4.55	6.95	8.69	125.09%
13	NCL	Krishnashila	18.5	2.00	1.96	3.15	3.96	125.51%
14	NCL	Block-B	15	1.49	1.40	2.56	2.89	112.69%
15	WCL	Penganga	21	0.66	0.69	4.05	1.35	33.25%
16	WCL	Mungoli	22	0.31	1.14	4.23	1.45	34.30%
17	WCL	Niljai Deep	35.2	2.60	2.72	6.81	5.32	78.09%
18	WCL	Makardhokra I	18	1.84	2.08	3.49	3.92	112.38%
19	SECL	Gevra	68	5.95	6.51	11.56	12.46	107.81%
20	SECL	Kusmunda	57	4.75	4.82	9.69	9.57	98.78%
21	SECL	Dipka	39	1.70	1.28	6.63	2.97	44.80%
22	SECL	Manikpur	12	1.39	1.35	2.04	2.74	134.47%
23	SECL	Gare Pelma IV/2&3	10	0.57	0.41	1.70	0.99	57.99%
24	MCL	Bhubaneswari	16	0.73	0.56	2.95	1.30	43.91%
25	MCL	Lakhanpur	40	3.16	3.26	7.37	6.42	87.12%
26	MCL	Kulda	15.5	1.24	1.27	2.86	2.51	87.76%
27	MCL	Garjanbahal	11	1.05	1.36	2.03	2.41	118.87%
28	MCL	Ananta	24.5	2.86	2.67	4.98	5.53	111.01%
29	MCL	Lingaraj	12	1.80	1.67	2.21	3.47	156.66%
30	MCL	Bharatpur	10	0.78	0.90	1.84	1.67	90.84%
31	MCL	Kaniha	7	0.57	0.54	1.29	1.11	85.82%
32	MCL	Hingula	13	1.12	1.00	2.86	2.11	73.98%
33	MCL	Jagannath	7	0.85	0.74	1.29	1.59	123.12%
34	MCL	Belpahar	10	0.59	0.83	1.84	1.42	77.19%
35	MCL	Balram	14.5	1.38	1.06	2.67	2.44	91.42%
36	MCL	Samaleswari	12	0.73	1.00	2.21	1.72	77.97%
37	MCL	Lajkura	10	1.14	1.05	1.84	2.19	118.61%
Total			1021.30	84.49	85.35	179.87	169.83	94.42%

Particulars	
Mines produced more than 100%	16
Mines produced more than 80% , but less than 100%	10
Mines produced more than 50% , but less than 80%	9
Mines produced less than 50%	2

Coal Production in mines of all Subsidiaries of CIL (provisional data)

Fig. in MT

SI No	Subs	Types of Mines	No of Mines	Annual Target (MT)	During May			Upto May		
					FY 23	FY 22	Growth (%) M-O-M	FY 23	FY 22	Growth (%) Y-O-Y
1	ECL	Top 37	2	27.00	1.50	1.28	17.46	2.90	2.71	6.97
		Others	2	4.30	0.26	0.34	-22.02	0.63	0.60	5.69
		Top 75	4	31.30	1.76	1.61	9.24	3.53	3.31	6.74
		Rest	74	18.70	1.16	1.22	-4.85	2.39	2.46	-2.97
	Overall ECL	78	50.00	2.92	2.83	3.18	5.92	5.77	2.60	
2	BCCL	Top 37	0	0.00	0.00	0.00		0.00	0.00	
		Others	6	18.08	1.57	1.29	21.61	3.03	2.52	20.29
		Top 75	6	18.08	1.57	1.29	21.61	3.03	2.52	20.29
		Rest	24	13.92	1.08	0.82	31.87	2.09	1.54	35.63
	Overall BCCL	30	32.00	2.65	2.11	25.59	5.12	4.06	26.11	
3	CCL	Top 37	4	49.00	3.90	2.63	48.57	7.41	5.60	32.32
		Others	5	12.55	0.72	0.84	-14.49	1.38	1.87	-26.16
		Top 75	9	61.55	4.62	3.47	33.26	8.79	7.47	17.69
		Rest	33	14.45	0.89	0.74	19.78	1.72	1.58	8.79
	Overall CCL	42	76.00	5.51	4.21	30.88	10.51	9.05	16.13	
4	MCL	Top 37	14	171.66	15.39	10.76	43.03	29.54	21.28	38.84
		Rest	5	4.34	0.17	0.11	54.55	0.33	0.23	41.03
	Overall MCL	19	176.00	15.56	10.87	43.15	29.87	21.51	38.87	
5	NCL	Top 37	8	117.97	10.55	8.89	18.67	20.93	17.13	22.18
		Others	2	4.03	0.46	0.35	30.31	0.89	0.67	32.84
		Top 75	10	122.00	11.01	9.24	19.12	21.82	17.80	22.58
		Rest	0	0.00	0.00	0.00		0.00	0.00	
	Overall NCL	10	122.00	11.01	9.24	19.16	21.82	17.81	22.52	
6	SECL	Top 37	5	143.90	9.64	6.74	43.03	20.06	13.55	48.04
		Others	10	21.81	1.44	1.24	16.13	2.64	2.73	-3.30
		Top 75	15	165.71	11.08	7.98	38.85	22.70	16.28	39.43
		Rest	55	16.29	1.13	1.23	-8.13	2.38	2.24	6.25
	Overall SECL	70	182.00	12.21	9.21	32.57	25.08	18.52	35.42	
7	WCL	Top 37	4	18.68	1.43	0.77	85.71	2.91	1.58	84.64
		Others	13	28.36	2.36	1.46	61.64	2.53	2.99	-15.24
		Top 75	17	47.04	3.79	2.23	69.96	5.44	4.56	19.27
		Rest	43	14.96	1.05	1.38	-23.91	4.39	2.69	63.26
	Overall WCL	60	62.00	4.84	3.61	34.07	9.83	7.25	35.59	
8	CIL	Top 37	37	528.21	42.41	31.06	36.53	83.75	61.84	35.42
		Others	38	89.13	6.81	5.52	23.36	11.10	11.37	-2.37
		Top 75	75	617.34	49.22	36.58	34.55	94.85	73.21	29.55
		Rest of mines	234	82.66	5.52	5.50	0.40	13.38	10.76	24.38
	Overall CIL	309	700.00	54.72	42.08	30.04	108.19	83.97	28.84	

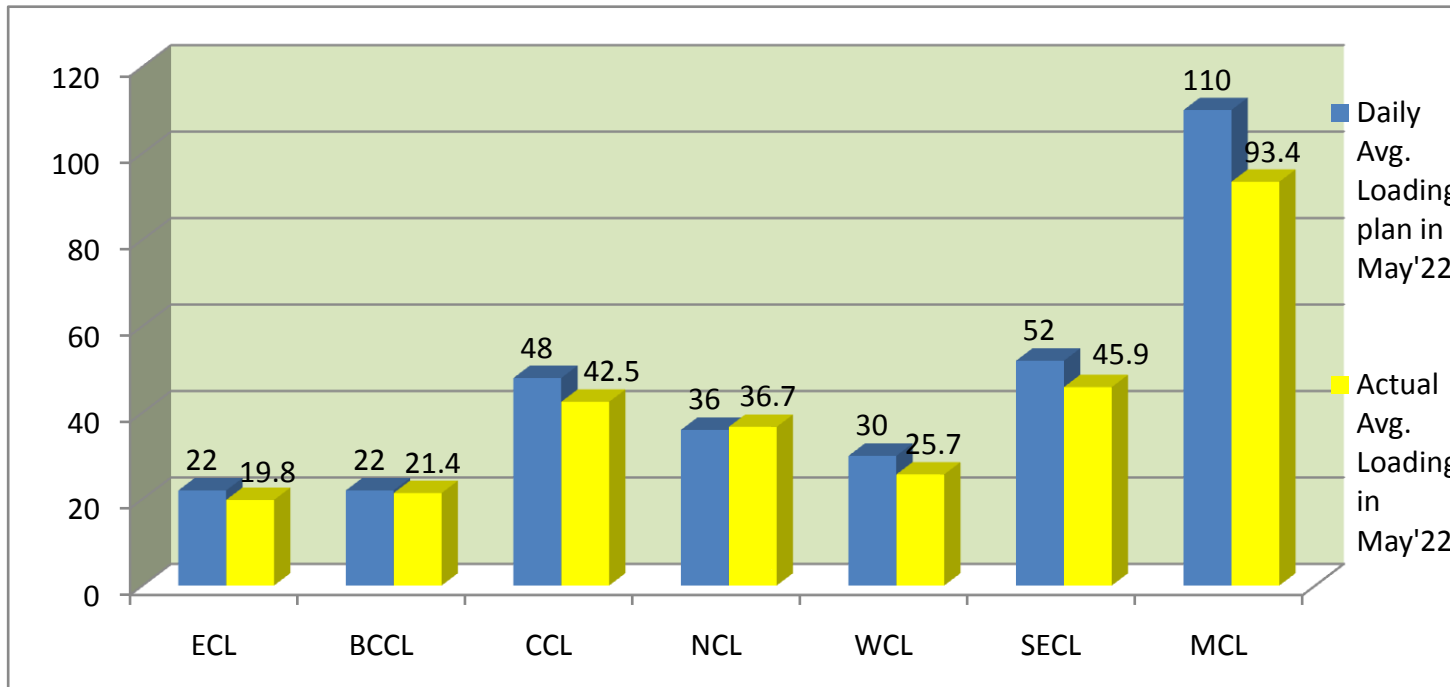
Top 75 = Top 37 + others mines including in top 75 mines

Rest of Mines = other than top 75

Overall Mines = Top 75 + rest of mines

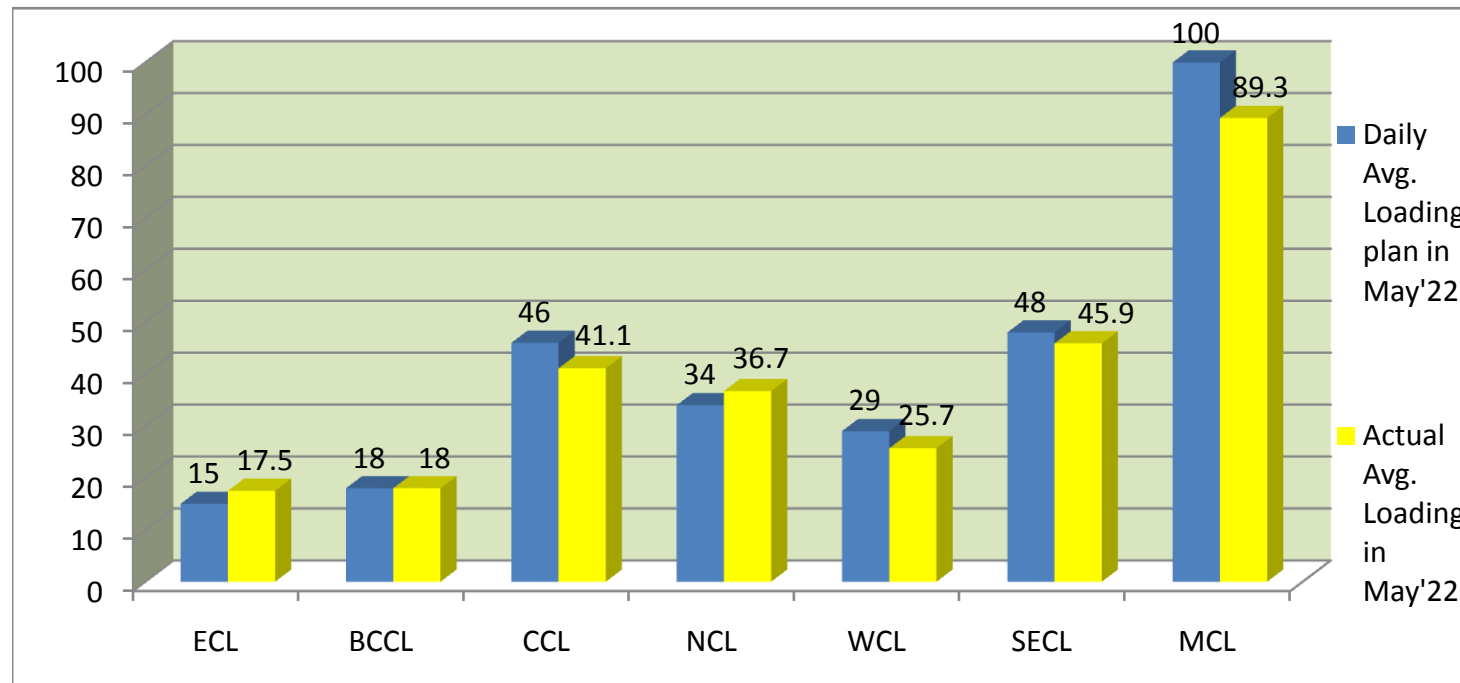
COMPANY-WISE MOVEMENT OF RAKES FOR ALL SECTORS PER DAY IN MAY '22 (Prov.)

COMPANY	Daily Avg. Loading plan in May'22	Actual Avg. Loading in May'22	Achievemnt (%)	Actual Avg. Loading in May'21	Growth% (May'21 to May'22)
ECL	22	19.8	90	22.5	-15.14
BCCL	22	21.4	97	20.9	10.61
CCL	48	42.5	89	48.4	-9.81
NCL	36	36.7	102	27.8	13.03
WCL	30	25.7	86	30	-1.04
SECL	52	45.9	88	51.2	-15.27
MCL	110	93.4	85	80.8	11.21
Total	320	285.3	89	281.6	-0.36



COMPANY-WISE MOVEMENT OF RAKES FOR POWER SECTOR PER DAY IN MAY '22 (Prov.)

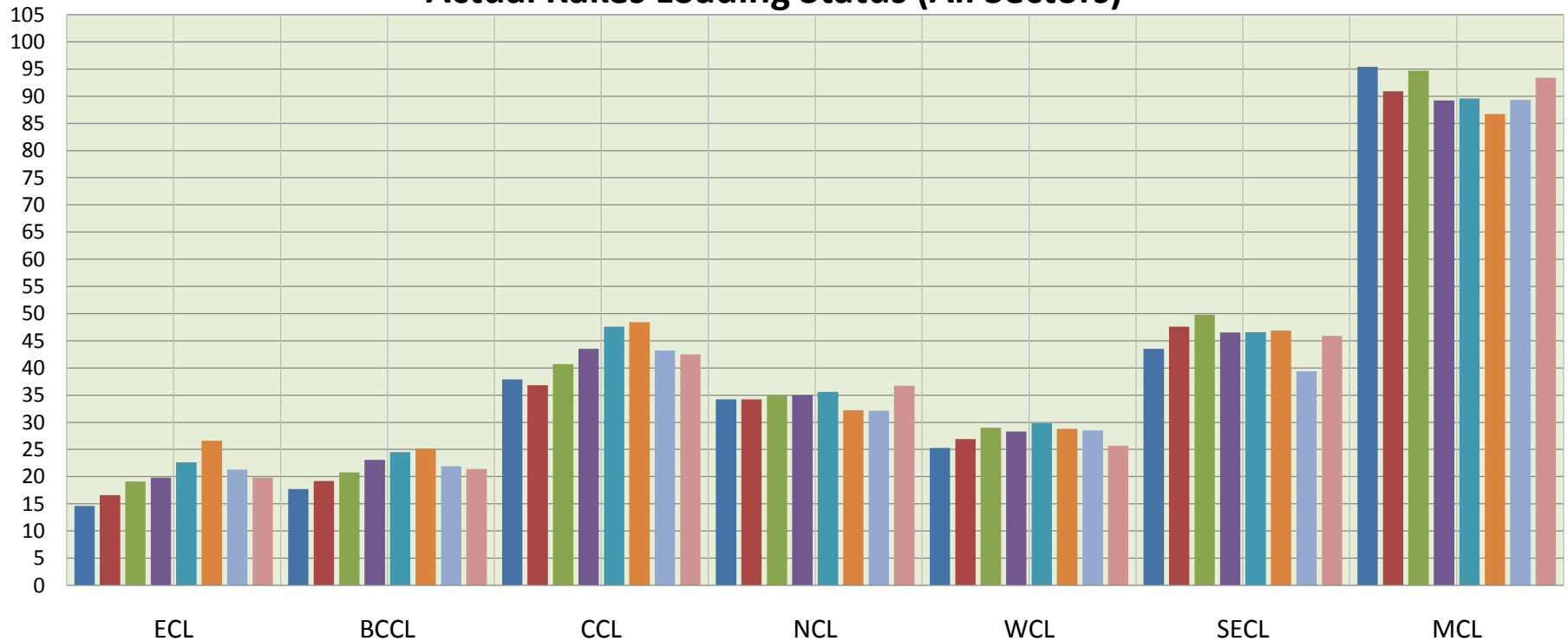
COMPANY	Daily Avg. Loading plan in May'22	Actual Avg. Loading in May'22	Achievemnt (%)	Actual Avg. Loading in May'21	Growth% (May'21 to May'22)
ECL	15	17.5	117	18.7	-6
BCCL	18	18	100	18.1	-1
CCL	46	41.1	89	45.6	-10
NCL	34	36.7	108	26.6	38
WCL	29	25.7	89	29.1	-12
SECL	48	45.9	96	44.2	4
MCL	100	89.3	89	62.5	43
Total	290	274.3	95	244.8	12



COMPANY-WISE MOVEMENT OF RAKES FOR ALL SECTORS PER DAY DURING FY 2022-23(Provisional)

COMPANY	Average loading in							
	Oct'21	Nov'21	Dec'21	Jan'22	Feb'22	Mar'22	Apr'22	May'22
ECL	14.6	16.6	19.1	19.8	22.6	26.6	21.3	19.8
BCCL	17.7	19.2	20.8	23.1	24.5	25.2	21.9	21.4
CCL	37.9	36.8	40.7	43.5	47.6	48.4	43.2	42.5
NCL	34.2	34.2	34.9	35	35.6	32.2	32.1	36.7
WCL	25.3	26.9	29	28.3	29.8	28.8	28.5	25.7
SECL	43.5	47.6	49.8	46.5	46.6	46.9	39.4	45.9
MCL	95.4	90.9	94.7	89.2	89.6	86.7	89.3	93.4
Total	268.6	272.2	289	285.4	296.3	294.8	275.8	285.3

Actual Rakes Loading Status (All Sectors)



- Average loading in Oct'21
- Average loading in Nov'21
- Average loading in Dec'21
- Average loading in Jan'22
- Average loading in Feb'22
- Average loading in Mar'22
- Average loading in Apr'22
- Average loading in May'22

COMPANY-WISE MOVEMENT OF RAKES FOR POWER SECTOR PER DAY DURING FY 2022-23(Provisional)

COMPANY	Average loading in							
	Oct'21	Nov'21	Dec'21	Jan'22	Feb'22	Mar'22	Apr'22	May'22
ECL	14.5	15.6	18.1	18.1	17.1	19.5	17.7	17.5
BCCL	14.8	15.7	17.2	18.7	20.8	21.7	18.7	18
CCL	36.3	34	37.6	40.5	45	45.9	41.8	41.1
NCL	33.9	34	34.7	34.9	34.8	31.8	32.1	36.7
WCL	25.3	26.9	28.9	28.3	29.7	28.8	28.5	25.7
SECL	41.5	42.7	45	41.1	42.3	43	38.5	45.9
MCL	88.3	79.2	83.1	78	80.9	78.3	83.6	89.3
Total	254.6	248.1	264.6	259.6	270.6	269	260.9	274.3

Actual Rake Loading Status (Power)

