

Monthly Coal Statistics for Apr'2022(Provisional)

Coal Production

India's coal production increased by 29% to 66.58 MT from 51.62 MT during Apr 22 as compared to Apr 21. During Apr 22, CIL, SCCL and Captives/ Others registered a growth of 27.64%, 9.59% & 59.98% by producing 53.47 MT, 5.32 MT & 7.79 MT respectively.

Coal Production

Fig. in MT

SI No	Subs	Monthly Target	Production during Apr 22				Production upto Apr 22		
			FY 23	Achmt.(%)	FY 22	Growth (%) (FY23-FY22)	FY 23	FY 22	Growth (%) (FY23-FY22)
1	ECL	3.60	3.00	83.33	2.94	2.04	3.00	2.94	2.04
2	BCCL	2.70	2.47	91.48	1.96	26.02	2.47	1.96	26.02
3	CCL	6.30	5.00	79.37	4.84	3.31	5.00	4.84	3.31
4	NCL	10.50	10.81	102.95	8.56	26.29	10.81	8.56	26.29
5	WCL	5.40	5.00	92.59	3.64	37.36	5.00	3.64	37.36
6	SECL	13.95	12.88	92.33	9.31	38.35	12.88	9.31	38.35
7	MCL	14.25	14.31	100.42	10.64	34.49	14.31	10.64	34.49
CIL		56.70	53.47	94.30	41.89	27.64	53.47	41.89	27.64
9	SCCL	5.84	5.32	91.10	4.86	9.59	5.32	4.86	9.59
10	Captives/Others		7.79		4.87	59.98	7.79	4.87	59.98
Grand Total			66.58		51.62	29.00	66.58	51.62	29.00

Coking Coal Production

Fig. in MT

SI No	Subs	Production during April			Production upto April		
		FY 23	FY 22	Growth (%) (FY23-FY22)	FY 23	FY 22	Growth (%) (FY23-FY22)
1	ECL	0.00	0.00	-100.00	0.00	0.00	-100.00
2	BCCL	2.40	1.82	32.21	2.40	1.82	32.21
3	CCL	1.23	1.37	-10.01	1.23	1.37	-10.01
5	WCL	0.01	0.02	-40.00	0.01	0.02	-40.00
6	SECL	0.02	0.02	11.11	0.02	0.02	11.11
CIL		3.66	3.22	13.73	3.66	3.22	13.73

Coal Despatch

India's coal despatch increased by 8.66% to 71.30 MT from 65.62 MT during Apr 22 as compared to Apr 20. During Apr 22, CIL, SCCL and Captives/Others registered a growth of 6.01%, 5.53% & 35.69% by despatching 57.50 MT, 5.74 MT & 8.06 MT respectively.

Coal Despatch

Fig. in MT

SI No	Subs	Monthly Target	Despatch during April				Despatch upto April		
			FY 23	Achmt.(%)	FY 22	Growth (%) (FY23-FY22)	FY 23	FY 22	Growth (%) (FY23-FY22)
1	ECL	3.45	3.17	91.88	4.10	-22.68	3.17	4.10	-22.68
2	BCCL	2.85	2.78	97.54	2.49	11.65	2.78	2.49	11.65
3	CCL	6.60	6.17	93.48	6.63	-6.94	6.17	6.63	-6.94

4	NCL	11.25	11.14	99.02	9.43	18.13	11.14	9.43	18.13
5	WCL	6.00	6.35	105.83	5.64	12.59	6.35	5.64	12.59
6	SECL	14.70	12.85	87.41	12.95	-0.77	12.85	12.95	-0.77
7	MCL	15.75	15.04	95.49	13.00	15.69	15.04	13.00	15.69
CIL		60.60	57.50	94.88	54.24	6.01	57.50	54.24	6.01
9	SCCL	5.84	5.74	98.31	5.44	5.53	5.74	5.44	5.53
10	Captives		8.06		5.94	35.69	8.06	5.94	35.69
Grand Total			71.30		65.62	8.66	71.30	65.62	8.66

The Power utilities despatch has grown by 18.15 % to 61.81 MT during Apr 22 as compared to 52.32 MT in Apr 20. Fall in import prices have been observed since the end of Oct 2021, however, import prices are still at high level to discourage coal import.

Coal Despatch to Different Sectors

Fig. in MT

Sectors	Despatch during April			Despatch upto April		
	FY 23	FY 22	Growth (%) (FY23-FY22)	FY 23	FY 22	Growth (%) (FY23-FY22)
Power	61.81	52.32	18.15	61.81	52.32	18.15
CPP	1.72	3.40	-49.56	1.72	3.40	-49.56
Steel	0.90	0.50	79.28	0.90	0.50	79.28
Cement	0.71	0.61	16.50	0.71	0.61	16.50
Sponge Iron	0.60	0.65	-8.46	0.60	0.65	-8.46
Others	5.56	8.14	-31.59	5.56	8.14	-31.59
Total	71.30	65.62	8.66	71.30	65.62	8.66

Lignite Production

Fig. in MT

SI No	Company	Production during April			Production upto April		
		FY 23	FY 22	Growth (%) (FY23-FY22)	FY 23	FY 22	Growth (%) (FY23-FY22)
1	NLCIL	2.44	1.44	69.19	2.44	1.44	69.19
2	GMDCL	0.80	0.72	11.70	0.80	0.72	11.70
3	GIPCL	0.37	0.36	1.10	0.37	0.36	1.10
4	RSMML	0.07	0.12	-40.32	0.07	0.12	-40.32
5	BLMCL	0.19	0.39	-52.44	0.19	0.39	-52.44
6	GHCL	0.00	0.02	-100.00	0.00	0.02	-100.00
7	VS Lignite	0.07	0.07	1.43	0.07	0.07	1.43
8	GSPL	0.08	0.00		0.08	0.00	
Grand Total		4.02	3.13	28.38	4.02	3.13	28.38

Lignite Despatch

Fig. in MT

SI No	Company	Despatch during April			Despatch upto April		
		FY 23	FY 22	Growth (%) (FY23-FY22)	FY 23	FY 22	Growth (%) (FY23-FY22)
1	NLCIL	1.96	2.25	-12.83	1.96	2.25	-12.83
2	GMDCL	0.80	0.72	11.70	0.80	0.72	11.70
3	GIPCL	0.37	0.36	1.10	0.37	0.36	1.10
4	RSMML	0.07	0.12	-40.32	0.07	0.12	-40.32
5	BLMCL	0.51	0.48	5.65	0.51	0.48	5.65
6	GHCL	0.00	0.01	-100.00	0.00	0.01	-100.00
7	VS Lignite	0.05	0.09	-37.65	0.05	0.09	-37.65
8	GSPL	0.06	0.07	-10.29	0.06	0.07	-10.29
Grand Total		3.83	4.10	-6.59	3.83	4.10	-6.59

Source-wise	Apr-22	% share	Apr-21	Mar-22	Growth(%) (Apr22- Apr21)	Growth(%) (Apr22-Mar22)
Coal	102529	75.13	93838	100276	9.26	2.25
Lignite	2311	1.69	2175	2276	6.25	1.54
Hydro	12270	8.99	8688	11138	41.23	10.16
Nuclear	3157	2.31	3026	3988	4.33	-20.84
Gas, Naptha & Diesel	2270	1.66	3422	2097	-33.66	8.25
RES (Wind, Solar, Biomass & Others)	13928	10.21	11060	13809	25.93	0.86
Total	136565	100.00	122209	133584	11.75	2.23

Coal based power generation has registered a growth of 9.26% in Apr 2022 as compared to Apr 2021 and growth of 2.25% as compared to Mar 2022 . The overall power generation in Apr 2022 has been 11.75% higher than the power generated in Apr 2021 and 2.23% higher than power generated in Mar 2022. Coal based power generation in the month of Apr 2022 has been 102529 MU in comparison to 100276 MU in Mar 2022 and registered a growth of 2.25 %. Total power generation has also increased in Apr 2022 to 136565 MU from 133584 MU in Mar 2022.

Electricity Prices and Clearing Volume in Indian Energy Exchange

Item	Type	During the period of April		
		FY 23	FY 22	Growth (%)
Energy Prices (INR per MWh)	RTC	10064.12	3702.61	171.81
	Evening	10966.95	4257.74	157.58
	Day	8339.38	3096.18	169.34
	Night	11301.21	3959.70	185.41
	Morning	9563.27	3481.24	174.71
Market Clearing Volume (BU)	RTC	5717.31	7931.23	-27.91
	Evening	5004.96	8134.68	-38.47
	Day	6423.20	7984.12	-19.55
	Night	5050.55	7362.39	-31.40
	Morning	6717.38	8528.98	-21.24
Total		4116464.39	5710486.23	-27.91

Despatch of Coal By CIL

Fig. in MT

Sectors	Coal Despatch during April			Coal Despatch upto April		
	FY 23	FY 22	Growth (%) (FY23-FY22)	FY 23	FY 22	Growth (%) (FY23-FY22)
Power	49.72	42.32	17.50	49.72	42.32	17.50
CPP	1.52	3.06	-50.28	1.52	3.06	-50.28
Steel	0.25	0.10	155.10	0.25	0.10	155.10
Cement	0.34	0.39	-13.27	0.34	0.39	-13.27
Sponge Iron	0.56	0.64	-12.09	0.56	0.64	-12.09
Others	5.11	7.74	-33.99	5.11	7.74	-33.99
Total	57.50	54.24	6.01	57.50	54.24	6.01

Despatch of Coal By SCCL

Fig. in MT

Sectors	Coal Despatch during April			Coal Despatch upto April		
	FY 23	FY 22	Growth (%) (FY23-FY22)	FY 23	FY 22	Growth (%) (FY23-FY22)
Power	4.82	4.48	7.65	4.82	4.48	7.65
CPP	0.20	0.35	-43.23	0.20	0.35	-43.23
Steel						
Cement	0.25	0.21	21.05	0.25	0.21	21.05
Sponge Iron	0.04	0.01	169.23	0.04	0.01	169.23
Others	0.44	0.39	10.97	0.44	0.39	10.97
Total	5.74	5.44	5.55	5.74	5.44	5.55

Coal Despatch to Different Sectors by Captive and Others

Fig. in MT

Sectors	Coal Despatch during April			Coal Despatch upto April		
	FY 23	FY 22	Growth (%) (FY23-FY22)	FY 23	FY 22	Growth (%) (FY23-FY22)
Power	7.27	5.52	31.63	7.27	5.52	31.63
CPP						
Steel	0.65	0.40	60.89	0.65	0.40	60.89
Cement	0.12	0.01	990.91	0.12	0.01	990.91
Sponge Iron						
Others	0.020	0.002	900.00	0.02	0.00	900.00
Total	8.06	5.94	35.69	8.06	5.94	35.69

Top 37 Mines Production during Apr 2022 (provisional)

Sr. No	Subsidiary	Mines	Annual Target (MT)	Target for Apr 2022 (MT)	Prod. during Apr 2022 (MT)	Achievement
1	ECL	Rajmahal	16	0.95	0.40	42.70%
2	ECL	Sonepur Bazari	11	0.96	0.99	103.49%
3	CCL	Amrapali	21	1.59	1.45	91.42%
4	CCL	Magadh	14	1.06	0.75	70.49%
5	CCL	Ashoka	9	0.68	0.89	129.79%
6	CCL	AKK	5	0.38	0.42	110.32%
7	NCL	Jayant	24	2.01	2.04	101.48%
8	NCL	Dudhichua	22	1.84	1.96	106.24%
9	NCL	Nigahi	21	1.76	2.01	114.52%
10	NCL	Amlohri	14	1.17	1.08	92.47%
11	NCL	Khadia	14	1.17	1.28	109.33%
12	NCL	Bina	10.5	0.88	0.90	101.99%
13	NCL	Krishnashila	7	0.59	0.61	103.68%
14	NCL	Block-B	5.47	0.46	0.49	107.16%
15	WCL	Penganga	6.3	0.51	0.63	123.42%
16	WCL	Mungoli	4.375	0.36	0.17	47.12%
17	WCL	Niljai Deep	4	0.33	0.29	90.21%
18	WCL	Makardhokra I	0	0.33	0.38	117.96%
19	SECL	Gevra	52	4.22	3.98	94.21%
20	SECL	Kusmunda	45	3.36	3.20	95.24%
21	SECL	Dipka	38	2.85	2.50	87.80%
22	SECL	Manikpur	4.9	0.37	0.47	127.76%
23	SECL	Gare Pelma IV/2&3	4	0.30	0.28	91.80%
24	MCL	Bhubaneswari	28	2.28	2.54	111.30%
25	MCL	Lakhanpur	21	1.73	1.84	106.07%
26	MCL	Kulda	18.5	1.53	1.50	97.98%
27	MCL	Garjanbahal	15.16	1.19	1.27	106.78%
28	MCL	Ananta	14	1.10	1.09	99.15%
29	MCL	Lingaraj	14	1.10	1.35	122.56%
30	MCL	Bharatpur	10	0.79	0.86	109.56%
31	MCL	Kaniha	10	0.79	0.88	111.80%
32	MCL	Hingula	10	0.79	0.64	81.50%
33	MCL	Jagannath	7.5	0.59	0.44	74.30%
34	MCL	Belpahar	7.5	0.59	0.39	66.00%
35	MCL	Balram	6.5	0.51	0.56	109.37%
36	MCL	Samaleswari	5	0.39	0.44	111.38%
37	MCL	Lajkura	4.5	0.35	0.36	101.26%
Total			524.21	41.85	41.33	98.76%

Particulars	No. of Mines
Mines produced more than 100%	22
Mines produced more than 80% , but less than 100%	10
Mines produced more than 50% , but less than 80%	3
Mines produced less than 50%	2

Top 37 OBR during Apr 2022 (provisional)

Sr. No	Subsidiary	Mines	Annual OBR Target (M.Cum)	Target for Apr 2022 (M.Cum)	OBR during Apr 2022 (M.Cum)	Achievement
1	ECL	Rajmahal	24.1	2.30	1.67	72.66%
2	ECL	Sonepur Bazari	60.7	5.32	6.55	123.26%
3	CCL	Amrapali	24	1.82	1.48	81.31%
4	CCL	Magadh	18	1.36	1.25	91.92%
5	CCL	Ashoka	12	0.91	0.38	41.75%
6	CCL	AKK	8	0.61	0.84	138.81%
7	NCL	Jayant	53	4.44	5.60	126.28%
8	NCL	Dudhichua	72	6.03	5.51	91.35%
9	NCL	Nigahi	80	6.70	5.70	84.99%
10	NCL	Amlohri	59.5	4.98	5.44	109.16%
11	NCL	Khadia	51	4.27	4.66	108.99%
12	NCL	Bina	40.8	3.42	4.14	121.23%
13	NCL	Krishnashila	18.5	1.55	2.00	129.01%
14	NCL	Block-B	15	1.26	1.49	118.06%
15	WCL	Penganga	21	2.05	0.66	32.11%
16	WCL	Mungoli	22	2.14	0.31	14.55%
17	WCL	Niljai Deep	35.2	3.44	2.60	75.65%
18	WCL	Makardhokra I	18	1.76	1.84	104.63%
19	SECL	Gevra	68	5.44	5.95	109.37%
20	SECL	Kusmunda	57	4.56	4.75	104.25%
21	SECL	Dipka	39	3.12	1.70	54.34%
22	SECL	Manikpur	12	0.96	1.39	145.21%
23	SECL	Gare Pelma IV/2&3	10	0.80	0.57	71.58%
24	MCL	Bhubaneswari	16	1.45	0.73	50.55%
25	MCL	Lakhanpur	40	3.63	3.16	87.22%
26	MCL	Kulda	15.5	1.41	1.24	88.28%
27	MCL	Garjanbahal	11	1.00	1.05	105.05%
28	MCL	Ananta	24.5	2.45	2.86	116.72%
29	MCL	Lingaraj	12	1.09	1.80	165.01%
30	MCL	Bharatpur	10	0.91	0.78	85.96%
31	MCL	Kaniha	7	0.63	0.57	89.87%
32	MCL	Hingula	13	1.41	1.12	79.43%
33	MCL	Jagannath	7	0.63	0.85	133.29%
34	MCL	Belpahar	10	0.91	0.59	65.08%
35	MCL	Balram	14.5	1.31	1.38	105.33%
36	MCL	Samaleswari	12	1.09	0.73	66.79%
37	MCL	Lajkura	10	0.91	1.14	125.76%
Total			1021.30	88.06	84.49	95.95%

Particulars	No. of Mines
Mines produced more than 100%	18
Mines produced more than 80% , but less than 100%	8
Mines produced more than 50% , but less than 80%	8
Mines produced less than 50%	3

Coal Production in mines of all Subsidiaries of CIL (provisional data)

Fig. in MT

SI No	Subs	Types of Mines	No of Mines	Annual Target (MT)	During Apr			Upto Apr		
					FY 23	FY 22	Growth %) M-O-M	FY 23	FY 22	Growth %) Y-O-Y
1	ECL	Top 37	2	27.00	1.40	1.43	-2.10	1.40	1.43	-2.10
		Others	2	4.30	0.37	0.26	42.31	0.37	0.26	42.31
		Top 75	4	31.30	1.77	1.69	4.73	1.77	1.69	4.73
		Rest	74	18.70	1.23	1.25	-1.60	1.23	1.25	-1.60
	Overall ECL	78	50.00	3.00	2.94	2.04	3.00	2.94	2.04	
2	BCCL	Top 37	0	0.00	0.00	0.00		0.00	0.00	
		Others	9	18.08	1.46	1.23	18.70	1.46	1.23	18.70
		Top 75	9	18.08	1.46	1.23	18.70	1.46	1.23	18.70
		Rest	21	13.92	1.01	0.73	38.36	1.01	0.73	38.36
	Overall BCCL	30	32.00	2.47	1.96	26.02	2.47	1.96	26.02	
3	CCL	Top 37	4	49.00	3.51	3.38	3.85	3.51	3.38	3.85
		Others	7	12.55	0.66	0.63	4.76	0.66	0.63	4.76
		Top 75	11	61.55	4.17	4.01	3.99	4.17	4.01	3.99
		Rest	31	14.45	0.83	0.83	0.00	0.83	0.83	0.00
	Overall CCL	42	76.00	5.00	4.84	3.31	5.00	4.84	3.31	
4	MCL	Top 37	14	171.66	14.15	10.52	34.51	14.15	10.52	34.51
		Others	2	3.90	0.12	0.08	50.00	0.12	0.08	50.00
		Top 75	16	175.56	14.27	10.60	34.62	14.27	10.60	34.62
		Rest	3	0.44	0.04	0.04	0.00	0.04	0.04	0.00
	Overall MCL	19	176.00	14.31	10.64	34.49	14.31	10.64	34.49	
5	NCL	Top 37	8	117.97	10.38	8.24	25.97	10.38	8.24	25.97
		Others	2	4.03	0.43	0.32	34.38	0.43	0.32	34.38
		Top 75	10	122.00	10.81	8.56	26.29	10.81	8.56	26.29
		Rest	0	0.00	0.00	0.00		0.00	0.00	
	Overall NCL	10	122.00	10.81	8.56	26.29	10.81	8.56	26.29	
6	SECL	Top 37	4	143.90	10.42	6.80	53.24	10.42	6.80	53.24
		Others	10	21.81	1.20	1.49	-19.46	1.20	1.49	-19.46
		Top 75	14	165.71	11.62	8.29	40.17	11.62	8.29	40.17
		Rest	56	16.29	1.26	1.02	23.53	1.26	1.02	23.53
	Overall SECL	70	182.00	12.88	9.31	38.35	12.88	9.31	38.35	
7	WCL	Top 37	3	18.68	1.48	0.41	260.98	1.48	0.41	260.98
		Others	9	28.36	0.17	2.04	-91.67	0.17	2.04	-91.67
		Top 75	12	47.04	1.65	2.45	-32.65	1.65	2.45	-32.65
		Rest	48	14.96	3.35	1.19	181.51	3.35	1.19	181.51
	Overall WCL	60	62.00	5.00	3.64	37.36	5.00	3.64	37.36	
8	CIL	Top 37	35	528.21	41.34	30.78	34.31	41.34	30.78	34.31
		Others	41	93.03	4.41	6.05	-27.11	4.41	6.05	-27.11
		Top 75	76	621.24	45.75	36.83	24.22	45.75	36.83	24.22
		Rest of mines	233	78.76	7.72	5.06	52.57	7.72	5.06	52.57
	Overall CIL	309	700.00	53.47	41.89	27.64	53.47	41.89	27.64	

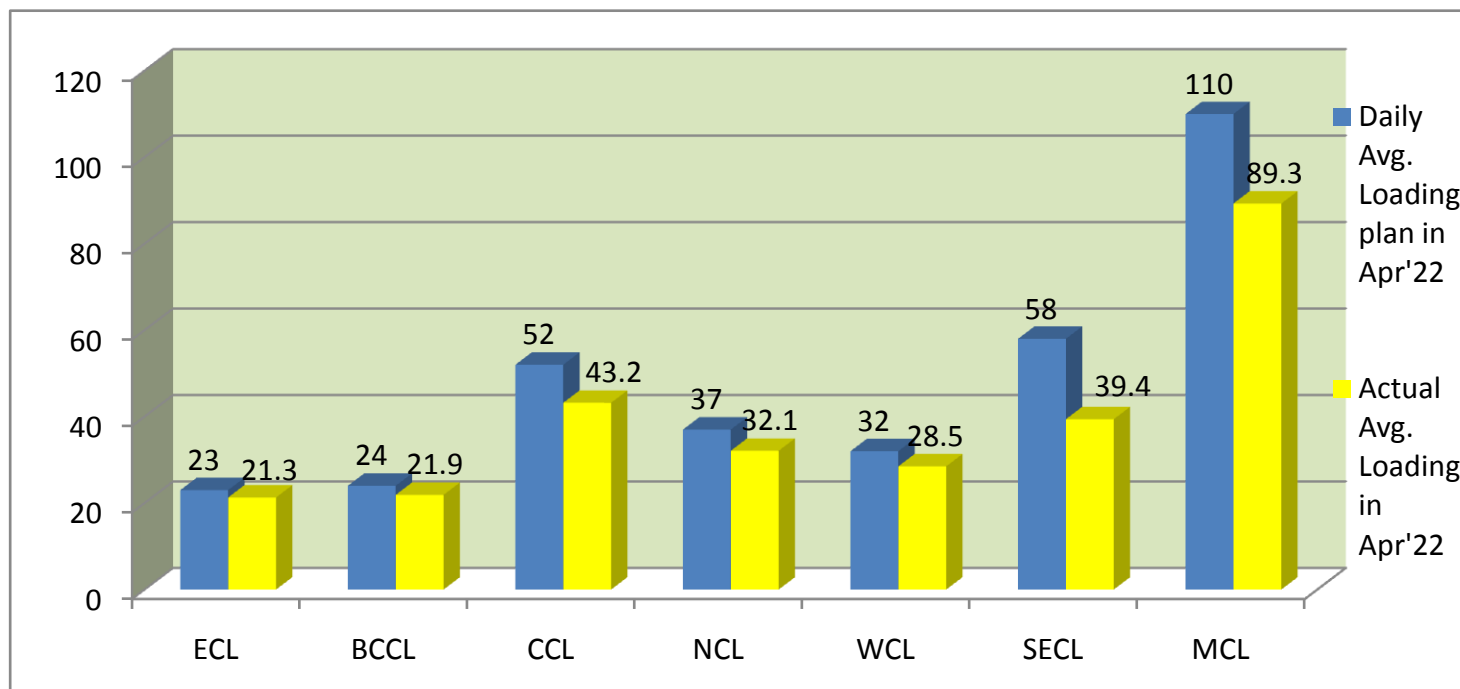
Top 75 = Top 37 + others mines including in top 75 mines

Rest of Mines = other than top 75

Overall Mines = Top 75 + rest of mines

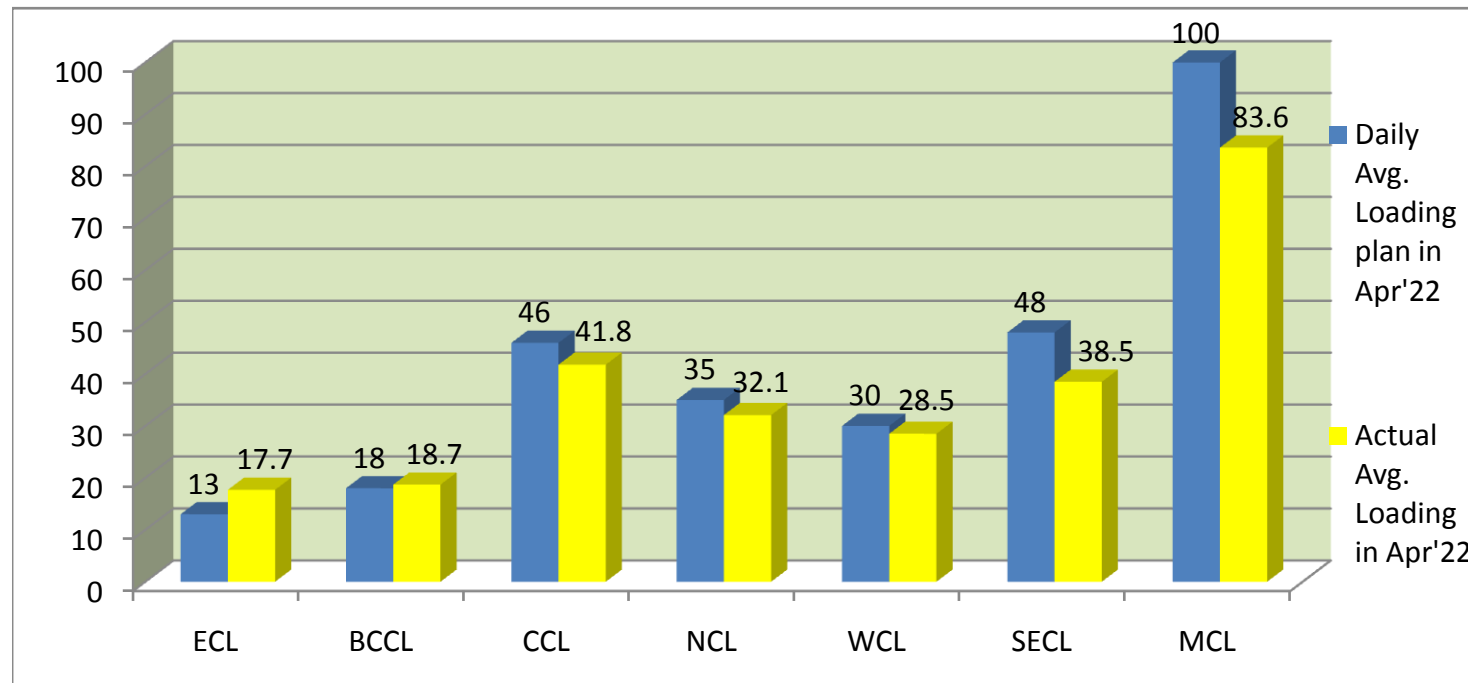
COMPANY-WISE MOVEMENT OF RAKES FOR ALL SECTORS PER DAY IN APR '22 (Prov.)

COMPANY	Daily Avg. Loading plan in Apr'22	Actual Avg. Loading in Apr'22	Achievemnt (%)	Actual Avg. Loading in Apr'21	Growth% (Apr21 to Apr22)
ECL	23	21.3	93	25.1	-15.14
BCCL	24	21.9	91	19.8	10.61
CCL	52	43.2	83	47.9	-9.81
NCL	37	32.1	87	28.4	13.03
WCL	32	28.5	89	28.8	-1.04
SECL	58	39.4	68	46.5	-15.27
MCL	110	89.3	81	80.3	11.21
Total	336	275.8	82	276.8	-0.36



COMPANY-WISE MOVEMENT OF RAKES FOR POWER SECTOR PER DAY IN APR '22 (Prov.)

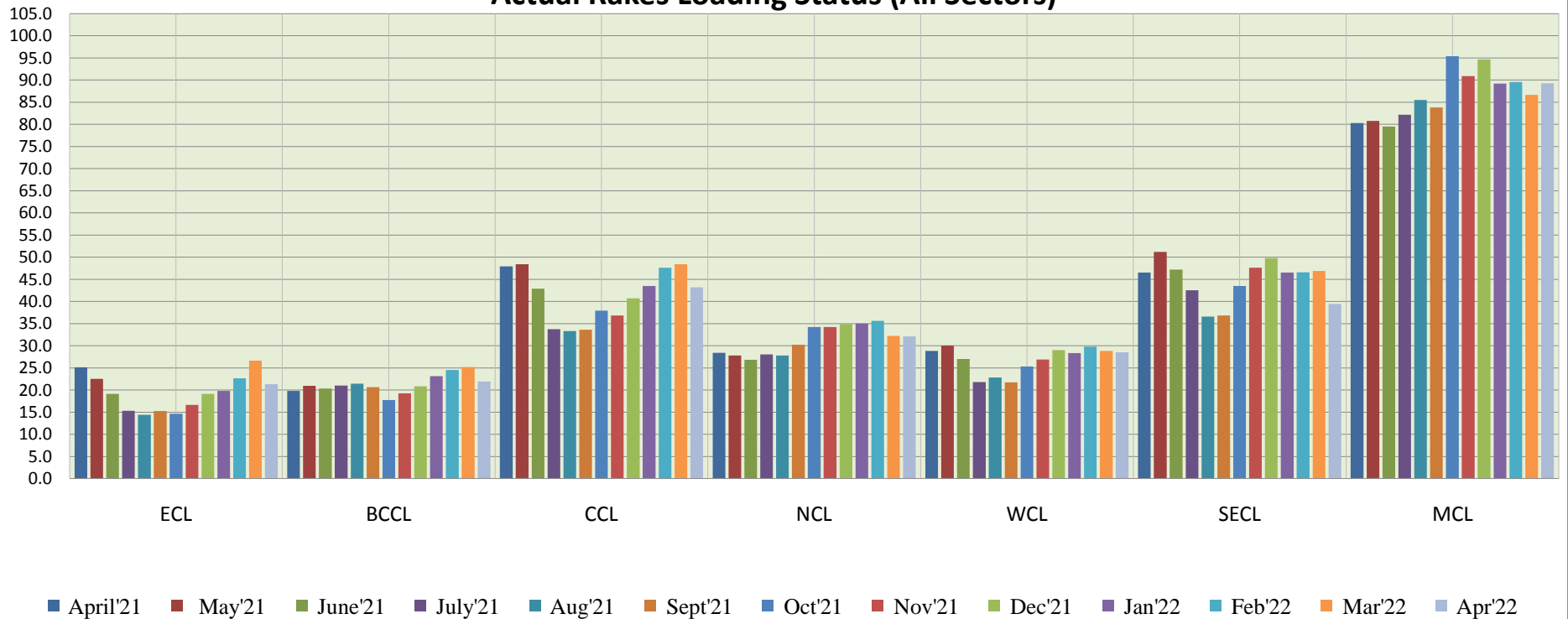
COMPANY	Daily Avg. Loading plan in Apr'22	Actual Avg. Loading in Apr'22	Achievemnt (%)	Actual Avg. Loading in Apr'21	Growth% (Apr21 to Apr22)
ECL	13	17.7	136	21.1	-16
BCCL	18	18.7	104	17.1	9
CCL	46	41.8	91	46.2	-10
NCL	35	32.1	92	26.6	21
WCL	30	28.5	95	27.9	2
SECL	48	38.5	80	40.1	-4
MCL	100	83.6	84	64.4	30
Total	290	260.9	90	243.4	7



COMPANY-WISE MOVEMENT OF RAKES FOR ALL SECTORS PER DAY DURING FY 2022-23(Provisional)

COMPANY	Average loading in												
	April'21	May'21	June'21	July'21	Aug'21	Sept'21	Oct'21	Nov'21	Dec'21	Jan'22	Feb'22	Mar'22	Apr'22
ECL	25.1	22.5	19	15.3	14.4	15.2	14.6	16.6	19.1	19.8	22.6	26.6	21.3
BCCL	19.8	20.9	20	21	21.4	20.6	17.7	19.2	20.8	23.1	24.5	25.2	21.9
CCL	47.9	48.4	43	33.7	33.3	33.6	37.9	36.8	40.7	43.5	47.6	48.4	43.2
NCL	28.4	27.8	27	28	27.8	30.2	34.2	34.2	34.9	35	35.6	32.2	32.1
WCL	28.8	30	27	21.8	22.8	21.7	25.3	26.9	29	28.3	29.8	28.8	28.5
SECL	46.5	51.2	47	42.5	36.6	36.8	43.5	47.6	49.8	46.5	46.6	46.9	39.4
MCL	80.3	80.8	80	82.2	85.5	83.8	95.4	90.9	94.7	89.2	89.6	86.7	89.3
Total	276.8	281.6	262.8	244.5	241.8	241.9	268.6	272.2	289	285.4	296.3	294.8	275.8

Actual Rakes Loading Status (All Sectors)



COMPANY-WISE MOVEMENT OF RAKES FOR POWER SECTOR PER DAY DURING FY 2022-23(Provisional)

COMPANY	Average loading in												
	April'21	May'21	June'21	July'21	Aug'21	Sept'21	Oct'21	Nov'21	Dec'21	Jan'22	Feb'22	Mar'22	Apr'22
ECL	21.10	18.7	16.5	13.7	12.5	15.2	14.5	15.6	18.1	18.1	17.1	19.5	17.7
BCCL	17.10	18.1	17.5	17.4	18.5	17.4	14.8	15.7	17.2	18.7	20.8	21.7	18.7
CCL	46.20	45.6	39.3	32	30.4	31.6	36.3	34	37.6	40.5	45	45.9	41.8
NCL	26.60	26.6	24.5	25.5	25.5	29.2	33.9	34	34.7	34.9	34.8	31.8	32.1
WCL	27.90	29.1	25.3	20.8	22.3	21.6	25.3	26.9	28.9	28.3	29.7	28.8	28.5
SECL	40.10	44.2	39.3	36	32.9	33.5	41.5	42.7	45	41.1	42.3	43	38.5
MCL	64.40	62.5	59.4	65.2	68.7	72.8	88.3	79.2	83.1	78	80.9	78.3	83.6
Total	243.4	244.8	221.8	210.6	210.8	221.3	254.6	248.1	264.6	259.6	270.6	269	260.9

Actual Rake Loading Status (Power)

