

**Monthly Coal Statistics for Feb'2022(Provisional)**

**Coal Production**

India's coal production increased by 2 % to 79.54 MT from 77.99 MT during Feb 2022 as compared to Feb 2020. During Feb 22, SCCL and Captives/Others registered a growth of 7.19% & 49.04% by producing 6.04 MT & 9.24MT. Whereas, CIL registered a negative growth of 2.87% by producing 64.26MT in comparison to 66.16MT in Feb 20. Coal Production of FY 22 has been compared with FY 20 as FY 21 has been considered as abnormal year due to Covid-19.

**Coal Production**

*Fig. in MT*

SI No	Subs	Monthly Target	Production during Feb 22					Production upto Feb 22			
			FY 22	Achmt.(%)	FY 21	FY 20	Growth (%) (FY22-FY20)	FY 22	FY 21	FY 20	Growth (%) (FY22-FY20)
1	ECL	5.50	3.54	64.36	4.56	5.40	-34.46	28.31	39.00	43.90	-35.51
2	BCCL	3.22	3.24	100.62	2.02	2.94	10.32	26.59	21.87	24.32	9.36
3	CCL	8.57	7.78	90.78	7.10	8.41	-7.44	57.64	53.88	55.44	3.98
4	NCL	11.39	11.51	101.05	9.30	8.93	28.96	109.94	103.93	98.03	12.14
5	WCL	8.53	6.87	80.54	7.07	7.46	-7.85	47.45	41.90	47.06	0.83
6	SECL	20.14	15.18	75.37	17.91	16.82	-9.77	121.85	124.17	127.52	-4.44
7	MCL	15.07	16.14	107.10	13.92	16.20	-0.38	150.60	130.30	121.11	24.35
	<b>CIL</b>	<b>72.41</b>	<b>64.26</b>	<b>88.74</b>	<b>61.88</b>	<b>66.16</b>	<b>-2.87</b>	<b>542.38</b>	<b>515.05</b>	<b>517.37</b>	<b>4.83</b>
9	SCCL	5.92	6.04	101.98	5.59	5.63	7.19	58.58	44.20	58.08	0.86
10	Captives/Others		9.24		7.14	6.20	49.04	80.55	61.22	57.93	39.05
	<b>Grand Total</b>		<b>79.54</b>		<b>74.61</b>	<b>77.99</b>	<b>1.99</b>	<b>681.51</b>	<b>620.47</b>	<b>633.38</b>	<b>7.60</b>

**Coking Coal Production**

SI No	Subs	Monthly Target	Production during Feb 22					Production upto Feb 22			
			FY 22	Achmt.(%)	FY 21	FY 20	Growth (%)	FY 22	FY 21	FY 20	Growth (%)
1	ECL	0.00	0.00	0.00	0.00	0.00	-100.00	0.01	0.01	0.03	-46.15
2	BCCL	2.77	2.95	106.61	1.86	2.24	31.60	25.09	20.75	21.48	16.80
3	CCL	2.51	2.06	81.77	1.69	0.81	152.77	13.91	12.44	8.06	72.53
5	WCL	0.01	0.01	120.00	0.02	0.02	-36.84	0.15	0.16	0.16	-10.43
6	SECL	0.02	0.02	75.00	0.02	0.02	-14.29	0.20	0.20	0.22	-9.87
	<b>CIL</b>	<b>5.32</b>	<b>5.04</b>	<b>94.72</b>	<b>3.59</b>	<b>3.20</b>	<b>57.68</b>	<b>39.37</b>	<b>33.56</b>	<b>29.96</b>	<b>31.40</b>

**Coal Despatch**

India's coal despatch increased by 7.480 % to 71.27 MT from 66.31 MT during Feb 2022 as compared to Feb 2020. During Feb 22, CIL and Captives/Others registered a growth of 4.90% & 38.17% by despatching 57.47 MT & 8.38MT respectively. Whereas, SCCL registered a negative growth of 0.81% by despatching 5.41MT in comparison to 5.46MT in Feb 20.

SI No	Subs	Monthly Target	Despatch during Feb 22					Despatch upto Feb 22			
			FY 22	Achmt.(%)	FY 21	FY 20	Growth (%) (FY22-FY20)	FY 22	FY 21	FY 20	Growth (%) (FY22-FY20)
1	ECL	3.08	2.93	95.13	3.78	4.82	-39.25	32.34	36.89	44.04	-26.57
2	BCCL	2.94	2.94	100.00	1.77	2.69	9.29	28.93	20.40	26.10	10.85
3	CCL	6.58	6.76	102.74	6.59	6.37	6.06	64.66	57.66	62.74	3.06
4	NCL	10.78	10.71	99.35	8.90	9.17	16.78	114.35	97.82	98.68	15.88
5	WCL	5.88	6.06	103.06	5.16	5.22	16.16	57.88	43.86	47.35	22.23
6	SECL	13.58	13.54	99.71	12.58	13.43	0.81	141.38	124.49	128.70	9.85
7	MCL	15.96	14.53	91.04	12.44	12.98	11.92	160.39	132.05	120.63	32.96
	<b>CIL</b>	<b>58.80</b>	<b>57.47</b>	<b>97.74</b>	<b>51.23</b>	<b>54.78</b>	<b>4.90</b>	<b>599.93</b>	<b>513.26</b>	<b>528.71</b>	<b>13.47</b>

9	SCCL	5.82	5.41	93.06	5.22	5.46	-0.81	59.59	42.60	57.45	3.73
10	Captives		8.38		6.13	6.07	38.17	81.50	60.35	57.68	41.30
<b>Grand Total</b>			<b>71.27</b>		<b>62.58</b>	<b>66.31</b>	<b>7.48</b>	<b>741.02</b>	<b>616.20</b>	<b>643.83</b>	<b>15.10</b>

The Power utilities despatch has grown by 15.27 % to 60.06 MT in the month of Feb 2022 as compared to 52.10 MT in Feb 2020. Fall in import prices have been observed since the end of Oct 2021, however, import prices are still at high level to discourage coal import.

### Coal Despatch to Different Sectors

Fig. in MT

Sectors	Despatch during Feb 22			Growth (%) (FY22-FY20)	Despatch upto Feb 22			Growth (%) (FY22-FY20)
	FY 22	FY 21	FY 20		FY 22	FY 21	FY 20	
Power	60.06	49.70	52.10	15.27	612.39	486.10	515.10	18.89
CPP	2.48	3.59	5.07	-51.17	32.66	41.76	48.31	-32.38
Steel	0.70	0.62	0.85	-16.88	7.05	7.77	9.72	-27.52
Cement	0.63	0.73	0.86	-26.40	6.77	6.07	7.89	-14.12
Sponge Iron	0.66	0.87	1.16	-43.09	7.46	8.52	9.39	-20.55
Others	6.74	7.08	6.27	7.45	74.68	65.98	53.43	39.78
<b>Total</b>	<b>71.27</b>	<b>62.58</b>	<b>66.31</b>	<b>7.48</b>	<b>741.01</b>	<b>616.20</b>	<b>643.83</b>	<b>15.09</b>

### Lignite Production

Fig. in MT

Sl No	Company	Production during Feb 22				Production upto Feb 22			
		FY 22	FY 21	FY 20	Growth (%) (FY22-FY20)	FY 22	FY 21	FY 20	Growth (%) (FY22-FY20)
1	NLCIL	2.51	2.00	2.86	-12.26	21.26	16.22	22.6	-5.95
2	GMDCL	0.77	0.80	0.65	17.74	7.61	5.14	6.35	19.76
3	GIPCL	0.37	0.33	0.47	-20.94	2.55	3.17	2.89	-11.99
4	RSMML	0.16	0.12	0.10	63.00	1.83	0.71	0.72	153.32
5	BLMCL	0.58	0.44	0.57	1.05	5.45	5.28	4.81	13.36
6	GHCL	0.01	0.00	0.00		0.08	0.03	0.08	-9.64
7	VS Lignite	0.06	0.06	0.07	-20.55	0.87	0.91	0.58	52.00
8	GSPL	0.16				1.61			
	<b>Grand Total</b>	<b>4.61</b>	<b>3.76</b>	<b>4.72</b>	<b>-2.31</b>	<b>41.25</b>	<b>31.46</b>	<b>38.03</b>	<b>8.45</b>

### Lignite Despatch

Fig. in MT

Sl No	Company	Despatch during Feb 22				Despatch upto Feb 22			
		FY 22	FY 21	FY 20	Growth (%) (FY22-FY20)	FY 22	FY 21	FY 20	Growth (%) (FY22-FY20)
	NLCIL	2.21	1.99	2.42	-8.88	24.55	17.29	23.73	3.44
2	GMDCL	0.77	0.80	0.65	17.74	7.61	5.14	6.35	19.76
3	GIPCL	0.37	0.33	0.47	-20.94	2.55	3.17	2.89	-11.99
4	RSMML	0.16	0.12	0.10	63.00	1.83	0.71	0.72	153.32
5	BLMCL	0.39	0.44	0.45	-12.86	5.23	5.65	4.86	7.58
6	GHCL	0.01	0.02	0.00	250.00	0.07	0.04	0.05	20.37
7	VS Lignite	0.07	0.06	0.07	-4.35	0.85	0.84	0.60	41.86
8	GSPL	0.18				1.67			
	<b>Grand Total</b>	<b>4.15</b>	<b>3.76</b>	<b>4.17</b>	<b>-0.26</b>	<b>44.35</b>	<b>32.85</b>	<b>39.21</b>	<b>13.10</b>

Power Generation in Feb 2022					Qty. (MU)
Source-wise	Feb-22	% share	Feb-21	Feb-20	Growth (%) (FY 22-FY 20)
Coal	85534	76.01	83116	79507	7.58
Lignite	2298	2.04	2061	2569	-10.55
Hydro	7805	6.94	7608	8618	-9.43
Nuclear	3460	3.07	2354	2742	26.19
Gas, Naptha & Diesel	1819	1.62	3033	3453	-47.32
RES (Wind, Solar, Biomass & Others)	11615	10.32	9836	9781	18.75
<b>Total</b>	<b>112531</b>	<b>100.00</b>	<b>108008</b>	<b>106670</b>	<b>5.49</b>

Coal based power generation has registered a growth of 7.58 % in the month of Feb 2022 in comparison to Feb 2020 . The overall power generation in Feb 2022 has been 5.49% higher than the power generated in Feb 2020. However, coal based power generation in the month of Feb 2022 has been 85534 MU in comparison to 88642 MU in Jan 2022 and registered a negative growth of 3.51 %. Total power generation has also decreased in Feb 2022 to 112531 MU from 115757 MU in Jan 2022.

#### Electricity Prices and Clearing Volume in Indian Energy Exchange

Item	Type	During the period of Feb		
		FY 22	FY 21	Growth (%)
Energy Prices (per Mwh)	RTC	4443.08	3391.07	31.02
	Evening	5185.33	3709.72	39.78
	Day	4033.31	3443.73	17.12
	Night	2527.54	2365.14	6.87
	Morning	7399.04	4616.33	60.28
Market Clearing Volume (BU)	RTC	8351.30	7625.27	9.52
	Evening	7451.69	7433.37	0.25
	Day	8600.82	8158.98	5.42
	Night	7723.06	5995.49	28.81
	Morning	10363.48	9831.26	5.41
	<b>Total</b>	<b>5612072.91</b>	<b>5124183.17</b>	<b>9.52</b>

#### Coal Consumption in TPP (in MT)

Fig. in MT

Item	During Jan 22			Upto Jan 22		
	FY 22	FY 21	Growth (%)	FY 22	FY 21	Growth (%)
Domestic Coal	61.50	51.36	19.75	547.2	442.58	23.65
Imported Coal Receipt	1.30	3.87	-66.44	22.73	39.01	-41.74
<b>Total Receipt</b>	<b>62.80</b>	<b>55.23</b>	<b>13.71</b>	<b>569.98</b>	<b>481.59</b>	<b>18.35</b>
<b>Coal Consumption</b>	<b>60.8</b>	<b>58.71</b>	<b>3.58</b>	<b>495.89</b>	<b>573.08</b>	<b>-13.47</b>

### Despatch of Coal By CIL

Sectors	Coal Despatch during Feb 22				Coal Despatch Upto Feb 22			
	FY 22	FY 21	FY 20	Growth (%) (FY22-FY20)	FY 22	FY 21	FY 20	Growth (%) (FY22-FY20)
Power	48.05	39.77	42.22	13.81	487.88	396.26	417.15	16.95
CPP	2.14	3.35	4.73	-54.80	29.69	39.65	45.25	-34.39
Steel	0.21	0.09	0.16	33.76	2.15	1.66	2.01	7.23
Cement	0.26	0.45	0.64	-59.06	3.09	4.05	5.33	-42.06
Sponge Iron	0.63	0.85	1.15	-45.12	7.25	8.47	9.31	-22.08
Others	6.18	6.72	5.89	4.94	69.86	63.16	49.66	40.68
<b>Total</b>	<b>57.47</b>	<b>51.22</b>	<b>54.78</b>	<b>4.90</b>	<b>599.92</b>	<b>513.26</b>	<b>528.71</b>	<b>13.47</b>

### Despatch of Coal By SCCL

Sectors	Coal Despatch during Feb 22				Coal Despatch Upto Feb 22			
	FY 22	FY 21	FY 20	Growth (%) (FY22-FY20)	FY 22	FY 21	FY 20	Growth (%) (FY22-FY20)
Power	4.22	4.36	4.57	-7.77	48.86	35.97	48.58	0.59
CPP	0.34	0.24	0.34	-0.59	2.97	2.11	3.06	-2.68
Steel								
Cement	0.28	0.27	0.17	60.47	2.76	1.73	2.03	36.04
Sponge Iron	0.03	0.01	0.01	190.00	0.21	0.05	0.08	157.50
Others	0.56	0.33	0.37	51.91	4.78	2.74	3.70	29.21
<b>Total</b>	<b>5.41</b>	<b>5.22</b>	<b>5.46</b>	<b>-0.81</b>	<b>59.59</b>	<b>42.60</b>	<b>57.45</b>	<b>3.73</b>

### Coal Despatch to Different Sectors by Captive and Others

Sectors	Coal Despatch during Feb 22				Coal Despatch Upto Feb 22			
	FY 22	FY 21	FY 20	Growth (%) (FY22-FY20)	FY 22	FY 21	FY 20	Growth (%) (FY22-FY20)
Power	7.79	5.58	5.31	46.76	75.65	53.88	49.37	53.23
CPP								
Steel	0.49	0.53	0.69	-28.41	4.90	6.11	7.72	-36.55
Cement	0.10	0.02	0.05	83.02	0.92	0.29	0.52	75.91
Sponge Iron								
Others	0.00	0.01	0.00	50.00	0.03	0.08	0.06	-47.69
<b>Total</b>	<b>8.38</b>	<b>6.13</b>	<b>6.07</b>	<b>38.17</b>	<b>81.50</b>	<b>60.35</b>	<b>57.68</b>	<b>41.30</b>

**Top 35 Mines Production during Feb 2022 (provisional)**

Sr. No	Subsidiary	Mines	Annual Target (MT)	Prod. upto Jan 2022 (MT)	Asking Rate for Feb 2022 (MT)	Prod. during Feb 2022 (MT)	Prod. upto Feb 2022 (MT)	Achievement
1.00	ECL	Rajmahal	17.50	4.52	6.16	0.66	5.18	10.72%
2.00	ECL	Sonepur Bazari	11.30	6.90	2.09	1.14	8.04	54.53%
3.00	CCL	Ashoka	13.00	10.10	1.37	1.34	11.45	97.69%
4.00	CCL	Amarpali	20.00	12.54	3.54	1.69	14.23	47.61%
5.00	CCL	AKK	4.50	2.65	0.88	0.66	3.31	75.45%
6.00	CCL	Magadh	10.00	7.52	1.18	1.52	9.04	129.36%
7.00	MCL	Bhubaneswari	28.00	23.70	2.04	1.97	25.67	96.73%
8.00	MCL	Lakhanpur	21.00	18.20	1.33	1.44	19.64	108.62%
9.00	MCL	Bharatpur	10.00	6.70	1.57	1.24	7.94	79.23%
10.00	MCL	Lingaraj	14.00	11.16	1.35	1.55	12.71	115.28%
11.00	MCL	Samaleswari	6.00	3.86	1.01	0.46	4.32	45.30%
12.00	MCL	Kulda	16.00	15.19	0.38	1.50	16.70	393.33%
13.00	MCL	Kaniha	9.00	7.86	0.54	1.15	9.01	212.62%
14.00	MCL	Hingula	7.50	5.68	0.87	0.92	6.59	105.77%
15.00	MCL	Ananta	13.00	10.63	1.13	1.34	11.97	118.78%
16.00	MCL	Jagannath	7.00	5.42	0.75	0.81	6.23	107.96%
17.00	MCL	Belpahar	7.00	5.25	0.83	0.91	6.16	109.71%
18.00	MCL	Lajkura	4.50	3.57	0.44	0.52	4.09	117.11%
19.00	MCL	Balram	6.50	4.81	0.80	0.77	5.58	95.81%
20.00	MCL	Garjanbahal	12.00	10.57	0.68	1.44	12.00	211.05%
21.00	NCL	Nigahi	21.00	17.70	1.56	1.67	19.37	106.57%
22.00	NCL	Jayant	22.00	19.54	1.17	2.30	21.85	197.47%
23.00	NCL	Dudhichua	22.00	17.32	2.22	2.26	19.58	101.71%
24.00	NCL	Amlohri	14.00	10.11	1.85	1.62	11.73	87.78%
25.00	NCL	Khadia	14.00	11.62	1.13	1.20	12.81	105.66%
26.00	NCL	Bina	9.50	7.76	0.82	1.05	8.81	127.44%
27.00	NCL	Krishnashila	7.00	6.03	0.46	0.55	6.58	118.84%
28.00	NCL	Block B	5.47	4.81	0.31	0.35	5.15	110.42%
29.00	SECL	Gevra	47.60	30.54	8.10	4.60	35.13	56.77%
30.00	SECL	Dipka	35.00	24.89	4.80	4.34	29.23	90.41%
31.00	SECL	Kushmunda	45.00	20.96	11.41	2.78	23.74	24.40%
32.00	SECL	Manikpur	4.90	4.62	0.13	0.19	4.81	143.70%
33.00	WCL	Niljai Deep	4.30	2.52	0.84	0.38	2.90	44.92%
34.00	WCL	Mungoli	4.00	2.49	0.72	0.81	3.30	113.44%
35.00	WCL	Penganga	6.30	4.91	0.66	0.69	5.60	104.52%
<b>Total</b>			<b>499.87</b>	<b>362.66</b>	<b>65.12</b>	<b>47.81</b>	<b>410.47</b>	<b>73.42%</b>

Particulars	No. of Mines
Mines produced more than 100%	21
Mines produced more than 80% , but less than 100%	5
Mines produced more than 50% , but less than 80%	4
Mines produced less than 50%	5

Note: Asking Rate has been derived by assuming even spread of mining activity across the months. However, the mining operations has seasonality effect.

**Top 35 Mines-wise OBR during Feb 2022 (provisional)**

S.No	Subsidiary	Mines	Annual Target (M.Cum)	OBR upto Jan 2022 (M.Cum)	Asking Rate for Feb 2022	OBR during Feb 2022 (M.Cum)	OBR upto Feb 2022 (M.Cum)	Achievement
1	ECL	Rajmahal	33.20	13.91	9.16	1.27	15.18	13.84%
2	ECL	Sonepur Bazar	71.40	54.41	8.06	6.27	60.68	77.79%
3	CCL	Ashoka	20.00	12.26	3.67	0.70	12.96	18.93%
4	CCL	Amarpali	25.00	12.73	5.82	1.48	14.21	25.45%
5	CCL	AKK	7.00	6.78	0.10	0.76	7.54	739.10%
6	CCL	Magadh	15.00	11.67	1.58	1.28	12.95	80.91%
7	MCL	Bhubaneswari	18.00	11.73	2.98	0.87	12.60	29.10%
8	MCL	Lakhanpur	40.00	32.55	3.54	2.90	35.45	81.93%
9	MCL	Bharatpur	12.00	9.47	1.20	0.83	10.30	69.09%
10	MCL	Lingaraj	14.00	11.12	1.37	1.87	12.98	136.43%
11	MCL	Samaleswari	9.50	9.18	0.15	1.06	10.24	701.17%
12	MCL	Kulda	18.00	13.11	2.32	1.07	14.18	45.96%
13	MCL	Kaniha	6.00	6.13	-0.06	0.63	6.76	-1001.73%
14	MCL	Hingula	12.00	15.96	-1.88	1.34	17.30	-71.27%
15	MCL	Ananta	20.00	21.28	-0.61	2.73	24.01	-449.83%
16	MCL	Jagannath	7.00	5.29	0.81	1.04	6.33	128.64%
17	MCL	Belpahar	8.00	4.26	1.77	0.85	5.12	48.18%
18	MCL	Lajkura	10.00	9.80	0.10	1.06	10.86	1103.47%
19	MCL	Balram	16.00	12.10	1.85	1.45	13.55	78.27%
20	MCL	Garjanbahal	9.00	6.94	0.98	0.86	7.80	87.68%
21	NCL	Nigahi	78.00	47.76	14.35	4.47	52.23	31.17%
22	NCL	Jayant	48.50	43.88	2.19	5.26	49.14	239.85%
23	NCL	Dudhichua	68.50	46.16	10.60	5.99	52.15	56.51%
24	NCL	Amlohri	56.50	44.41	5.74	5.36	49.77	93.44%
25	NCL	Khadia	50.50	43.35	3.39	4.18	47.53	123.13%
26	NCL	Bina	38.90	37.01	0.90	3.21	40.22	358.58%
27	NCL	Krishnashila	17.50	13.24	2.02	1.78	15.02	87.86%
28	NCL	Block B	17.00	15.59	0.67	1.37	16.96	204.72%
29	SECL	Gevra	65.00	41.22	11.29	5.63	46.85	49.93%
30	SECL	Dipka	36.00	17.88	8.60	1.70	19.59	19.80%
31	SECL	Kushmunda	50.00	30.01	9.49	4.69	34.70	49.43%
32	SECL	Manikpur	13.00	11.35	0.78	1.37	12.72	175.42%
33	WCL	Niljai Deep	30.00	25.71	2.04	1.33	27.04	65.51%
34	WCL	Mungoli	15.50	14.90	0.29	0.87	15.77	305.52%
35	WCL	Penganga	21.50	16.44	2.40	1.18	17.62	49.25%
<b>Total</b>			<b>977.50</b>	<b>729.61</b>	<b>117.64</b>	<b>78.70</b>	<b>808.31</b>	<b>66.90%</b>

Particulars	No. of Mines
Mines performed more than 100%	14
Mines performed more than 80% , but less than 100%	5
Mines performed more than 50% , but less than 80%	5
Mines performed less than 50%	11

## Coal Production in mines of all Subsidiaries of CIL (provisional data)

Fig. in MT

Srl No	Subs	Types of Mines	No of Mines	Annual Target (MT)	During Feb			Upto Feb		
							Growth %) M-O-M	FY 22	FY 20	Growth %) Y-O-Y
1	ECL	Top 35	2	28.80	1.80	3.41	-47.21	13.22	23.99	-44.88
		Others	2	3.80	0.43	0.56	-23.21	4.14	4.84	-14.43
		Top 75	4	32.60	2.23	3.97	-43.83	17.37	28.83	-39.76
		Rest	74	19.40	1.31	1.43	-8.39	10.94	15.07	-27.38
	<b>Overall ECL</b>			<b>78</b>	<b>52.00</b>	<b>3.54</b>	<b>5.40</b>	<b>-34.44</b>	<b>28.31</b>	<b>43.90</b>
2	BCCL	Top 35	0	3.49	0.00	0.00		0.00	0.00	
		Others	9	13.31	2.02	1.83	10.38	16.26	15.50	4.90
		Top 75	9	16.80	2.02	1.83	10.38	16.26	15.50	4.90
		Rest	21	16.69	1.22	1.11	9.91	10.33	8.82	17.12
	<b>Overall BCCL</b>			<b>30</b>	<b>30.00</b>	<b>3.24</b>	<b>2.94</b>	<b>10.20</b>	<b>26.59</b>	<b>24.32</b>
3	CCL	Top 35	4	51.00	5.22	4.52	15.49	38.03	27.36	39.00
		Others	7	9.40	1.04	2.44	-57.38	7.64	14.77	-48.29
		Top 75	11	60.40	6.26	6.96	-10.06	45.67	42.13	8.40
		Rest	31	13.60	1.52	1.45	4.83	11.97	13.31	-10.05
	<b>Overall CCL</b>			<b>42</b>	<b>74.00</b>	<b>7.78</b>	<b>8.41</b>	<b>-7.49</b>	<b>57.64</b>	<b>55.44</b>
4	MCL	Top 35	14	161.50	16.01	15.97	0.25	148.65	119.51	24.38
		Others	1	1.00	0.13	0.23	-43.48	0.98	1.60	-38.75
		Top 75	15	162.50	16.14	16.20	-0.37	149.63	121.11	23.55
		Rest	4	0.50	0.00	0.00		0.00	0.00	
	<b>Overall MCL</b>			<b>19</b>	<b>163.00</b>	<b>16.14</b>	<b>16.20</b>	<b>-0.37</b>	<b>150.6</b>	<b>121.11</b>
5	NCL	Top 35	8	114.97	10.99	8.51	29.14	105.88	94.77	11.72
		Others	2	4.03	0.52	0.41	26.83	4.06	4.12	-1.46
		Top 75	10	119.00	11.51	8.92	29.04	109.94	98.89	11.17
		Rest	0	0.00	0.00	0.00		0.00	0.00	
	<b>Overall NCL</b>			<b>10</b>	<b>119.00</b>	<b>11.51</b>	<b>8.93</b>	<b>28.89</b>	<b>109.94</b>	<b>98.03</b>
6	SECL	Top 35	4	132.50	11.91	13.21	-9.84	92.92	98.04	-5.22
		Others	10	19.29	1.75	2.08	-15.87	14.74	15.23	-3.22
		Top 75	14	151.79	13.66	15.29	-10.66	107.66	113.27	-4.95
		Rest	56	20.21	1.52	1.53	-0.65	11.65	14.25	-18.25
	<b>Overall SECL</b>			<b>70</b>	<b>172.00</b>	<b>15.18</b>	<b>16.82</b>	<b>-9.75</b>	<b>121.85</b>	<b>127.52</b>
7	WCL	Top 35	3	6.30	1.88	1.92	-2.08	11.80	11.29	4.52
		Others	9	29.08	2.20	3.17	-30.60	17.36	19.45	-10.76
		Top 75	12	35.38	4.08	5.09	-19.84	29.16	30.74	-5.15
		Rest	48	24.62	2.76	2.37	16.46	17.97	16.32	10.13
	<b>Overall WCL</b>			<b>60</b>	<b>60.00</b>	<b>6.84</b>	<b>7.46</b>	<b>-8.31</b>	<b>47.45</b>	<b>47.06</b>
8	CIL	Top 35	35	498.56	47.81	47.54	0.57	410.50	374.96	9.48
		Others	40	79.91	8.09	10.72	-24.53	65.18	75.51	-13.69
		Top 75	75	578.47	55.90	58.26	-4.05	475.68	450.47	5.60
		Rest of mines	234	91.53	8.34	7.90	5.57	66.70	66.91	-0.31
	<b>Overall CIL</b>			<b>309</b>	<b>670.00</b>	<b>64.24</b>	<b>66.16</b>	<b>-2.90</b>	<b>542.38</b>	<b>517.38</b>

Top 75 = Top 35 + others mines including in top 75 mines

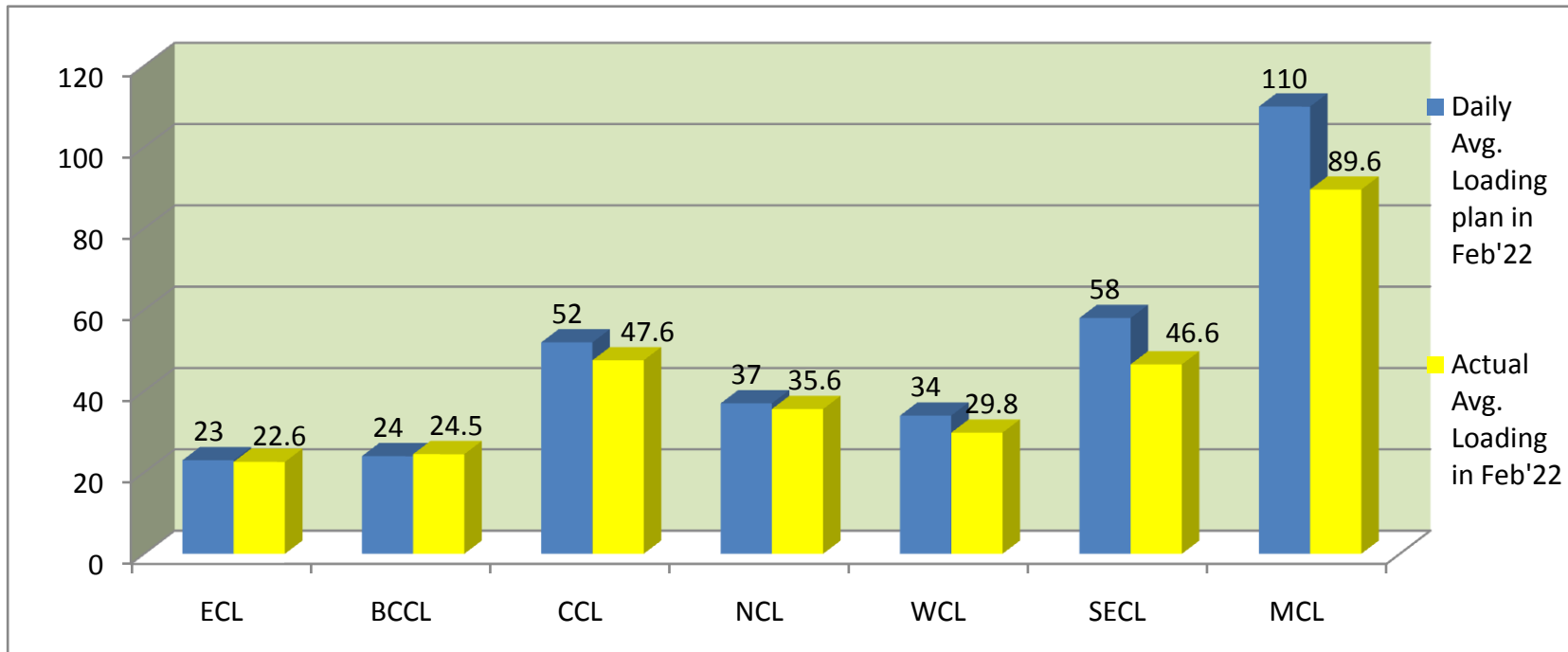
Rest of Mines = other than top 75

overall Mines = Top 75 + rest of mines



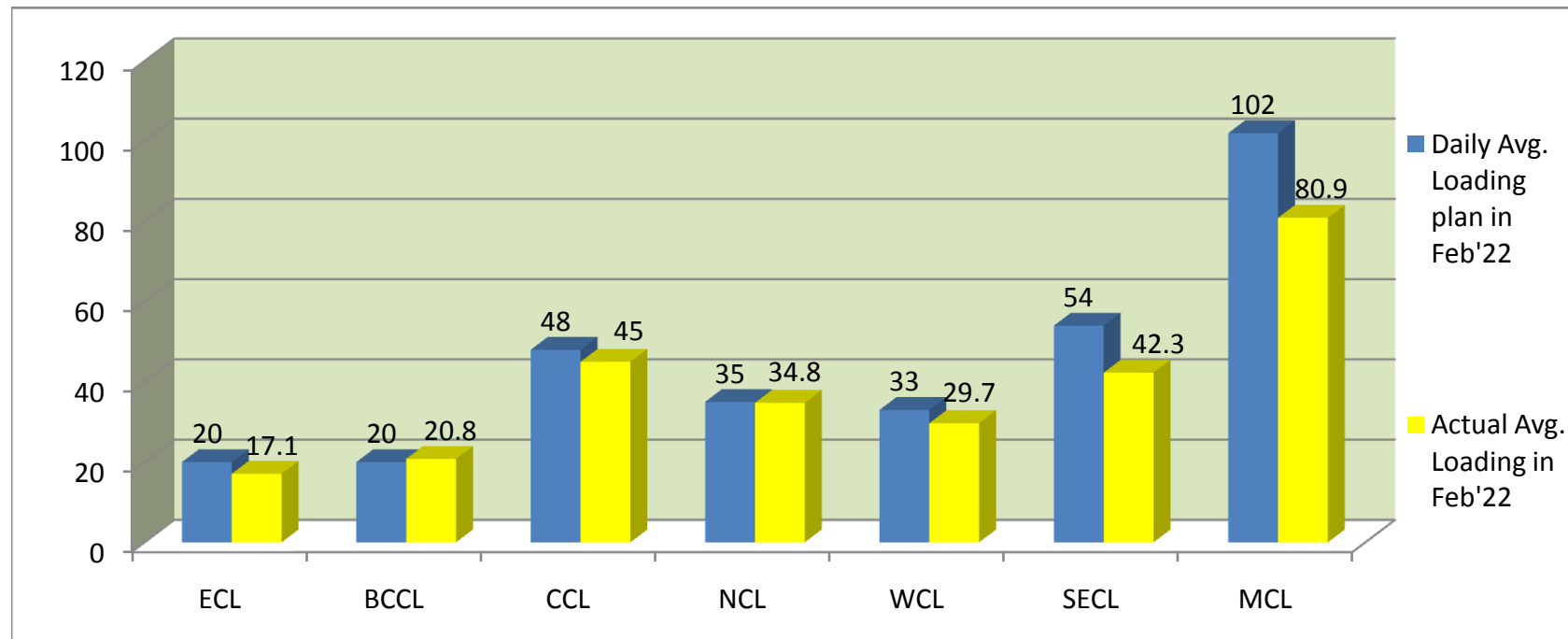
**COMPANY-WISE MOVEMENT OF RAKES FOR OVERALL SECTOR PER DAY IN FEB'22(Provisional)**

COMPANY	Daily Avg. Loading plan in Feb'22	Actual Avg. Loading in Feb'22	Achievemnt (%)	Actual Avg. Loading in Feb'21	Monthly Growth%
ECL	23	22.6	98	23.5	-4
BCCL	24	24.5	102	12.1	102
CCL	52	47.6	92	52	-8
NCL	37	35.6	96	30.9	15
WCL	34	29.8	88	32	-7
SECL	58	46.6	80	52	-10
MCL	110	89.6	81	83.2	8
<b>Total</b>	<b>338</b>	<b>296.3</b>	<b>88</b>	<b>285.7</b>	<b>4</b>



**COMPANY-WISE MOVEMENT OF RAKES FOR POWER SECTOR PER DAY IN FEB'22(Provisional)**

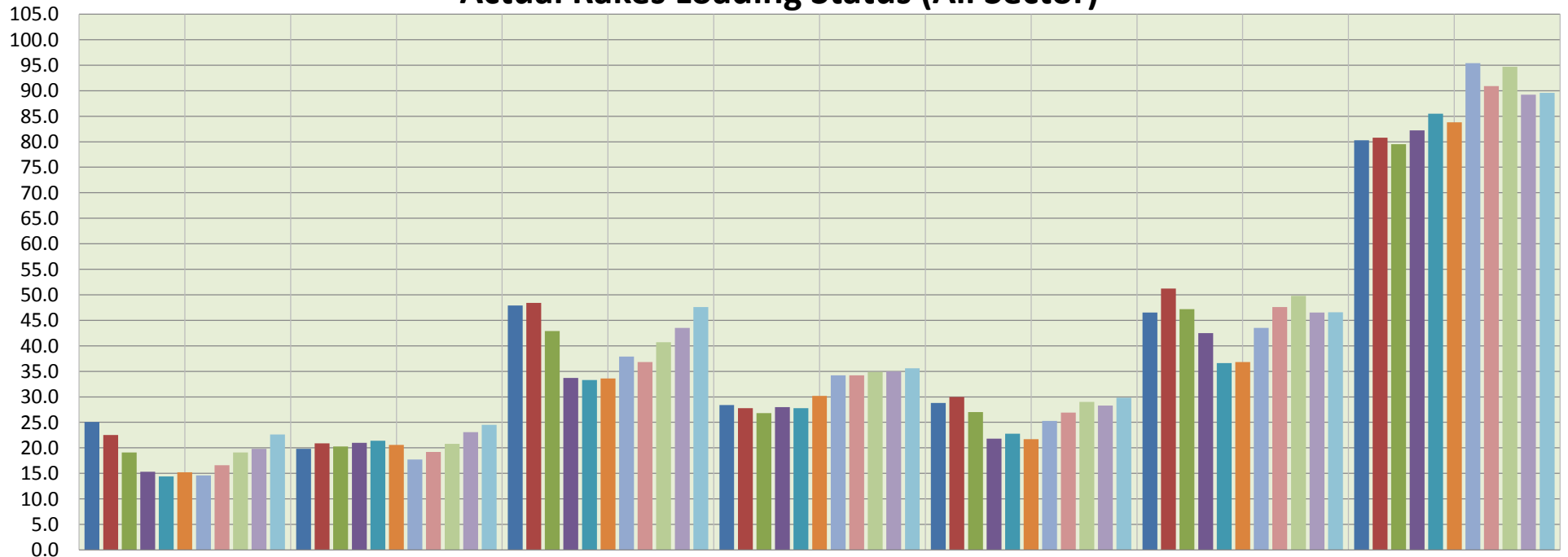
COMPANY	Daily Avg. Loading plan in Feb'22	Actual Avg. Loading in Feb'22	Achievemnt (%)	Actual Avg. Loading in Feb'21	Monthly Growth%
ECL	20	17.1	86	18.5	-8
BCCL	20	20.8	104	9.8	112
CCL	48	45	94	48.9	-8
NCL	35	34.8	99	27.3	27
WCL	33	29.7	90	30.4	-2
SECL	54	42.3	78	42.8	-1
MCL	102	80.9	79	67.5	20
Total	<b>312</b>	<b>270.6</b>	<b>87</b>	<b>245.2</b>	<b>10</b>



**COMPANY-WISE MOVEMENT OF RAKES FOR ALL SECTOR PER DAY DURING FY 2021-22(Provisional)**

COMPANY	Avg. Loading in April'21	Avg. Loading in May'21	Avg. Loading in June'21	Avg. Loading in July'21	Avg. Loading in Aug'21	Avg. Loading in Sept'21	Avg. Loading in Oct'21	Avg. Loading in Nov'21	Avg. Loading in Dec'21	Avg. Loading in Jan'22	Avg. Loading in Feb'22
ECL	25.1	22.5	19	15.3	14.4	15.2	14.6	16.6	19.1	19.8	22.6
BCCL	19.8	20.9	20	21	21.4	20.6	17.7	19.2	20.8	23.1	24.5
CCL	47.9	48.4	43	33.7	33.3	33.6	37.9	36.8	40.7	43.5	47.6
NCL	28.4	27.8	27	28	27.8	30.2	34.2	34.2	34.9	35	35.6
WCL	28.8	30	27	21.8	22.8	21.7	25.3	26.9	29	28.3	29.8
SECL	46.5	51.2	47	42.5	36.6	36.8	43.5	47.6	49.8	46.5	46.6
MCL	80.3	80.8	80	82.2	85.5	83.8	95.4	90.9	94.7	89.2	89.6
<b>Total</b>	<b>276.8</b>	<b>281.6</b>	<b>262.8</b>	<b>244.5</b>	<b>241.8</b>	<b>241.9</b>	<b>268.6</b>	<b>272.2</b>	<b>289</b>	<b>285.4</b>	<b>296.3</b>

**Actual Rakes Loading Status (All Sector)**



ECL                      BCCL                      CCL                      NCL                      WCL                      SECL                      MCL

- Avg. Loading in April'21   ■ Avg. Loading in May'21   ■ Avg. Loading in June'21   ■ Avg. Loading in July'21
- Avg. Loading in Aug'21   ■ Avg. Loading in Sept'21   ■ Avg. Loading in Oct'21   ■ Avg. Loading in Nov'21
- Avg. Loading in Dec'21   ■ Avg. Loading in Jan'22   ■ Avg. Loading in Feb'22

**COMPANY-WISE MOVEMENT OF RAKES FOR POWER SECTOR PER DAY DURING FY 2021-22(Provisional)**

COMPANY	Avg. Loading in April'21	Avg. Loading in May'21	Avg. Loading in June'21	Avg. Loading in July'21	Avg. Loading in Aug'21	Avg. Loading in Sept'21	Avg. Loading in Oct'21	Avg. Loading in Nov'21	Avg. Loading in Dec'21	Avg. Loading in Jan'22	Avg. Loading in Feb'22
ECL	21.10	18.7	16.5	13.7	12.5	15.2	14.5	15.6	18.1	18.1	17.1
BCCL	17.10	18.1	17.5	17.4	18.5	17.4	14.8	15.7	17.2	18.7	20.8
CCL	46.20	45.6	39.3	32	30.4	31.6	36.3	34	37.6	40.5	45
NCL	26.60	26.6	24.5	25.5	25.5	29.2	33.9	34	34.7	34.9	34.8
WCL	27.90	29.1	25.3	20.8	22.3	21.6	25.3	26.9	28.9	28.3	29.7
SECL	40.10	44.2	39.3	36	32.9	33.5	41.5	42.7	45	41.1	42.3
MCL	64.40	62.5	59.4	65.2	68.7	72.8	88.3	79.2	83.1	78	80.9
<b>Total</b>	<b>243.4</b>	<b>244.8</b>	<b>221.8</b>	<b>210.6</b>	<b>210.8</b>	<b>221.3</b>	<b>254.6</b>	<b>248.1</b>	<b>264.6</b>	<b>259.6</b>	<b>270.6</b>

**Actual Rakes Loading Status (Power)**

