

**Monthly Coal Statistics for Nov '2021(Provisional)**

**Coal Production**

India's coal production increased by 10.35 % to 67.84 MT from 61.47 MT during Nov 2021 as compared to Nov 2019. Out of the total production during Nov 2021, Coal India Ltd (CIL) achieved a growth of 7.60% by producing 53.80 MT of Coal, Singareni Collieries Ltd (SCCL) achieved a growth of 3.09% by producing 5.61 MT of Coal and captive blocks registered a growth of 39.68% by producing 8.43 MT of Coal during the period. Coal Production of FY 22 has been compared with FY 20 as FY 21 has been considered abnormal year

*Fig. in MT*

Sl No	Subs	Monthly Target	Production during Nov				Production upto Nov				
			FY 22	Achmt.(%)	FY 21	FY 20	Growth (%) (FY22-FY20)	FY 22	FY 21	FY 20	Growth (%) (FY22-FY20)
1	ECL	3.60	2.21	61.39	4.34	4.33	-48.95	18.34	25.79	28.40	-35.42
2	BCCL	3.30	2.56	77.58	2.54	2.46	3.90	17.23	14.80	15.93	8.15
3	CCL	6.90	5.74	83.19	6.44	5.84	-1.76	36.37	32.54	32.81	10.85
4	NCL	10.80	10.83	100.28	9.99	9.60	12.84	75.11	73.68	69.93	7.40
5	WCL	6.60	5.36	81.21	3.17	5.44	-1.40	28.39	23.18	27.05	4.94
6	SECL	15.30	12.23	79.93	12.41	11.64	5.08	77.68	76.74	81.24	-4.38
7	MCL	16.50	14.87	90.12	12.79	10.69	39.10	100.28	87.74	74.86	33.96
	<b>CIL</b>	<b>63.00</b>	<b>53.80</b>	<b>85.40</b>	<b>51.69</b>	<b>50.00</b>	<b>7.60</b>	<b>353.40</b>	<b>334.47</b>	<b>330.23</b>	<b>7.02</b>
9	SCCL	6.03	5.61	93.03	4.91	5.44	3.09	40.87	26.94	41.02	-0.37
10	Captives		8.43		6.57	6.03	39.68	53.17	39.88	39.15	35.81
	<b>Grand Total</b>		<b>67.84</b>		<b>63.18</b>	<b>61.47</b>	<b>10.35</b>	<b>447.43</b>	<b>401.29</b>	<b>410.39</b>	<b>9.03</b>

### Coal Despatch

India's coal despatch increased by 21.38 % to 71.13 MT from 58.60 MT during Nov 2021 as compared to Nov 2019. Out of the total production during Nov 2021, Coal India Ltd (CIL) achieved a growth of 19.63% by despatching 56.84 MT of Coal, Singareni Collieries Ltd (SCCL) achieved a growth of 7.82% by despatching 5.77 MT of Coal and captive blocks registered a growth of 48.50% by despatching 8.52 MT of Coal during the period.

Sl No	Subs	Monthly Target	Despatch During Nov					Despatch upto Nov			
			FY 22	Achmt.(%)	FY 21	FY 20	Growth (%) (FY22-FY20)	FY 22	FY 21	FY 20	Growth (%) (FY22-FY20)
1	ECL	3.60	2.64	73.33	3.67	4.22	-37.43	23.60	26.26	29.83	-20.87
2	BCCL	3.30	2.44	73.94	2.28	2.37	2.87	20.33	14.98	17.85	13.87
3	CCL	7.20	5.68	78.89	6.28	6.02	-5.65	45.24	39.08	43.93	2.98
4	NCL	11.10	11.53	103.87	9.63	9.48	21.68	80.46	69.25	69.93	15.05
5	WCCL	6.60	5.68	86.06	4.68	4.37	29.95	39.88	28.35	31.81	25.38
6	SECL	15.75	13.44	85.33	12.20	11.02	21.97	98.87	85.75	88.12	12.19
7	MCL	16.65	15.43	92.67	12.52	10.01	54.19	112.73	92.68	81.87	37.69
	<b>CIL</b>	<b>64.20</b>	<b>56.84</b>	<b>88.54</b>	<b>51.26</b>	<b>47.51</b>	<b>19.63</b>	<b>421.11</b>	<b>356.42</b>	<b>363.60</b>	<b>15.82</b>
9	SCCL	6.13	5.77	94.06	4.65	5.35	7.82	42.47	26.519	40.77	4.17
10	Captives		8.52		5.99	5.74	48.50	55.53	40.69	39.48	40.65
	<b>Grand Total</b>		<b>71.13</b>		<b>61.90</b>	<b>58.60</b>	<b>21.38</b>	<b>519.11</b>	<b>423.63</b>	<b>443.85</b>	<b>16.96</b>

The Power Sector Despatch has grown by 25.60 % to 60.29 MT in the month of Nov 2021 as compared to 48 MT in Nov 2019 owing to unprecedented rise in import prices and spurt in Power demand.

### Coal Despatch to Different Sectors

*Fig. in MT*

Sectors	Despatch During Nov			Growth (%) (FY22-FY20)	Despatch Upto Nov			Growth (%) (FY22-FY20)
	FY 22	FY 21	FY 20		FY 22	FY 21	FY 20	
Power	60.29	48.80	48.00	25.60	426.85	334.40	356.99	19.57
CPP	3.20	3.99	4.67	-31.38	27.24	29.56	32.97	-17.39
Steel	0.67	0.65	0.86	-21.82	4.85	5.76	7.09	-31.56
Cement	0.56	0.56	0.61	-8.20	4.42	3.91	5.43	-18.52
Sponge Iron	0.65	0.65	0.75	-13.87	4.85	5.71	6.41	-24.23
Others	5.76	7.25	3.71	55.21	50.90	44.29	34.96	45.58
<b>Total</b>	<b>71.13</b>	<b>61.90</b>	<b>58.60</b>	<b>21.39</b>	<b>519.11</b>	<b>423.63</b>	<b>443.85</b>	<b>16.96</b>

**Lignite Production**

*Fig. in MT*

Sl No	Company	Production during Nov				Production upto Nov			
		FY 22	FY 21	FY 20	Growth (%) (FY22-FY20)	FY 22	FY 21	FY 20	Growth (%) (FY22-FY20)
1	NLCIL	1.18	1.28	1.96	-39.64	14.81	11.20	14.79	0.12
2	GMDCL	0.77	0.45	0.54	42.99	5.22	2.81	4.34	20.26
3	GIPCL	0.39	0.40	0.25	53.57	1.29	2.00	1.57	-17.88
4	RSMML	0.19	0.11	0.06	223.73	1.32	0.39	0.46	185.96
5	BLMCL	0.50	0.53	0.35	41.48	3.79	3.75	3.32	14.08
6	GHCL	0.01	0.00	0.00	100.00	0.05	0.00	0.06	-23.81
7	VS Lignite	0.07	0.09	0.06	25.00	0.67	0.68	0.34	94.44
8	GSPL	0.17				1.00			
	<b>Grand Total</b>	<b>3.28</b>	<b>2.85</b>	<b>3.22</b>	<b>1.80</b>	<b>28.15</b>	<b>20.82</b>	<b>24.90</b>	<b>13.05</b>

**Lignite Despatch**

*Fig. in MT*

Sl No	Company	Despatch during Nov				Despatch upto Nov			
		FY 22	FY 21	FY 20	Growth (%) (FY22-FY20)	FY 22	FY 21	FY 20	Growth (%) (FY22-FY20)
	NLCIL	1.70	1.36	2.00	-15.20	17.69	12.12	16.98	4.18
2	GMDCL	0.77	0.45	0.54	42.99	5.22	2.81	4.34	20.26
3	GIPCL	0.39	0.40	0.25	53.57	1.29	2.00	1.57	-17.88
4	RSMML	0.19	0.11	0.06	223.73	1.32	0.39	0.46	185.96
5	BLMCL	0.51	0.53	0.40	28.28	3.99	4.11	3.49	14.26
6	GHCL	0.01	0.00	0.00	200.00	0.04	0.02	0.04	-2.27
7	VS Lignite	0.07	0.08	0.05	27.78	0.63	0.63	0.37	70.11
8	GSPL	0.17				1.08			
	<b>Grand Total</b>	<b>3.80</b>	<b>2.92</b>	<b>3.30</b>	<b>15.10</b>	<b>31.27</b>	<b>22.07</b>	<b>27.26</b>	<b>14.70</b>

**Power Generation in Nov 2021**

**Qty. (MU)**

Source-wise	Nov-21	% share	Nov-20	Nov-19	Growth (%) (Nov 22- Nov 20)
Coal	75620	73.29	73255	69655	8.56
Lignite	1963	1.90	1863	2393	-17.97
Hydro	10678	10.35	9072	10611	0.63
Nuclear	3669	3.56	3467	3321	10.48
Gas, Naptha & Diesel	1991	1.93	3827	3322	-40.07
RES (Wind, Solar, Biomass & Others)	9256	8.97	9171	7786	18.88
<b>Total</b>	<b>103177</b>	<b>100.00</b>	<b>100655</b>	<b>97088</b>	<b>6.27</b>

The coal based Power generation in the month of Nov 2021 has been 75620 MU in comparison to 80185 MU in Oct 2021 and registered a negative growth of 5.69%. Total power generation has also decreased in Nov 2021 to 103177 MU from 116828 MU in Oct 2021. The reason for less generation may be the reduction in power demand due to change of climate in Nov 2021. However, Coal based power generation has registered a growth of 8.56 % in the month of Nov 2021 in comparison to Nov 2019. The overall power generation in Nov 2021 has been 6.27% higher than the power generated in Nov 2019.

**Electricity Prices and Clearing Volume in Indian Energy Exchange**

Item	Type	During the period of Nov		
		FY 22	FY 21	Growth (%)
Energy Prices (per Mwh)	RTC	3076.29	2726.90	12.81
	Evening	4117.31	3027.98	35.98
	Day	2738.81	2810.39	-2.55
	Night	2131.36	2258.40	-5.63
	Morning	3758.98	2949.05	27.46
Market Clearing Volume (BU)	RTC	6554.40	6750.64	-2.91
	Evening	6750.91	7597.83	-11.15
	Day	6675.31	7172.84	-6.94
	Night	5335.08	4794.49	11.28
	Morning	8181.86	8164.28	0.22
	<b>Total</b>	<b>4719170.78</b>	<b>4860462.37</b>	<b>-2.91</b>

**Coal Consumption in TPP (in MT)**

*Fig. in MT*

Item	During Oct			Upto Oct		
	FY 22	FY 21	Growth (%)	FY 22	FY 21	Growth (%)
Domestic Coal	57.93	48.40	19.70	365.8	291.56	25.47
Imported Coal Receipt	1.82	4.64	-60.69	18.14	26.79	-32.27
<b>Total Receipt</b>	<b>59.76</b>	<b>53.04</b>	<b>12.67</b>	<b>383.96</b>	<b>318.34</b>	<b>20.61</b>
<b>Coal Consumption</b>	<b>57.7</b>	<b>53.65</b>	<b>7.55</b>	<b>401.35</b>	<b>332.83</b>	<b>20.59</b>

### Despatch of Coal By CIL

Sectors	Coal Despatch during Nov				Coal Production Upto Nov			
	FY 22	FY 21	FY 20	Growth (%) (FY22-FY20)	FY 22	FY 21	FY 20	Growth (%) (FY22-FY20)
Power	47.70	39.45	38.38	24.28	339.89	276.10	289.14	17.55
CPP	2.90	3.72	4.36	-33.53	25.23	28.09	30.89	-18.32
Steel	0.20	0.14	0.17	14.94	1.49	1.28	1.44	3.83
Cement	0.12	0.36	0.41	-70.66	2.01	2.71	3.56	-43.60
Sponge Iron	0.63	0.65	0.75	-15.78	4.74	5.69	6.36	-25.45
Others	5.29	6.95	3.44	53.96	47.75	42.55	32.22	48.21
<b>Total</b>	<b>56.84</b>	<b>51.26</b>	<b>47.51</b>	<b>19.64</b>	<b>421.11</b>	<b>356.42</b>	<b>363.60</b>	<b>15.82</b>

### Despatch of Coal By SCCL

Sectors	Coal Despatch during Nov				Coal Production Upto Nov			
	FY 22	FY 21	FY 20	Growth (%) (FY22-FY20)	FY 22	FY 21	FY 20	Growth (%) (FY22-FY20)
Power	4.66	3.90	4.62	0.82	35.29	22.37	34.44	2.48
CPP	0.30	0.27	0.31	-0.66	2.01	1.47	2.08	-3.59
Steel								
Cement	0.32	0.19	0.15	112.00	1.92	0.97	1.51	27.84
Sponge Iron	0.02	0.00	0.00	700.00	0.11	0.02	0.05	136.67
Others	0.47	0.30	0.27	74.35	3.14	1.69	2.70	16.31
<b>Total</b>	<b>5.77</b>	<b>4.65</b>	<b>5.35</b>	<b>7.82</b>	<b>42.47</b>	<b>26.52</b>	<b>40.77</b>	<b>4.18</b>

### Coal Despatch to Different Sectors by Captive and Others

Sectors	Coal Despatch during Nov				Coal Production Upto Nov			
	FY 22	FY 21	FY 20	Growth (%) (FY22-FY20)	FY 22	FY 21	FY 20	Growth (%) (FY22-FY20)
Power	7.931	5.46	5.00	58.62	51.67	35.93	33.42	54.62
CPP								
Steel	0.47	0.52	0.68	-31.19	3.36	4.48	5.65	-40.54
Cement	0.12	0.01	0.05	139.22	0.49	0.24	0.36	36.21
Sponge Iron								
Others	0.00	0.00	0.00		0.01	0.05	0.05	-78.26
<b>Total</b>	<b>8.52</b>	<b>5.99</b>	<b>5.74</b>	<b>48.50</b>	<b>55.53</b>	<b>40.69</b>	<b>39.48</b>	<b>40.67</b>

**Top 35 Mines Production during Nov 2021(provisional)**

Sr. No	Subsidiary	Mines	Annual Target (MT)	Prod. upto Oct 2021 (MT)	Asking Rate for Nov 2021(MT)	Prod. during Nov 2021 (MT)	Prod. upto Nov 2021 (MT)	Achievement
1.00	ECL	Rajmahal	17.50	3.42	2.80	0.21	3.63	7.67%
2.00	ECL	Sonepur Bazari	11.30	3.81	1.49	0.86	4.67	57.48%
3.00	CCL	Ashoka	13.00	6.36	1.32	1.10	7.46	83.55%
4.00	CCL	Amarpali	20.00	8.05	2.37	1.33	9.38	55.94%
5.00	CCL	AKK	4.50	1.26	0.64	0.35	1.60	53.71%
6.00	CCL	Magadh	10.00	4.35	1.12	1.04	5.39	92.68%
7.00	MCL	Bhubaneswari	28.00	17.33	2.12	1.97	19.30	92.88%
8.00	MCL	Lakhanpur	21.00	12.98	1.59	1.99	14.98	125.20%
9.00	MCL	Bharatpur	10.00	3.79	1.23	0.70	4.49	56.76%
10.00	MCL	Lingaraj	14.00	6.77	1.44	1.14	7.91	79.45%
11.00	MCL	Samaleswari	6.00	2.18	0.76	0.48	2.66	63.12%
12.00	MCL	Kulda	16.00	9.83	1.23	1.77	11.60	144.73%
13.00	MCL	Kaniha	9.00	4.62	0.87	0.92	5.54	105.94%
14.00	MCL	Hingula	7.50	3.39	0.82	0.62	4.01	76.42%
15.00	MCL	Ananta	13.00	6.71	1.25	1.16	7.87	92.55%
16.00	MCL	Jagannath	7.00	3.20	0.75	0.71	3.91	93.79%
17.00	MCL	Belpahar	7.00	2.59	0.88	0.45	3.05	51.91%
18.00	MCL	Lajkura	4.50	2.22	0.45	0.37	2.60	82.67%
19.00	MCL	Balram	6.50	2.84	0.73	0.56	3.41	77.71%
20.00	MCL	Garjanbahal	12.00	6.09	1.17	1.35	7.44	115.08%
21.00	NCL	Nigahi	21.00	12.07	1.77	1.86	13.93	104.71%
22.00	NCL	Jayant	22.00	12.95	1.80	2.06	15.01	114.58%
23.00	NCL	Dudhichua	22.00	10.82	2.22	2.01	12.83	90.38%
24.00	NCL	Amlohri	14.00	6.04	1.58	1.30	7.34	82.33%
25.00	NCL	Khadia	14.00	7.68	1.26	1.23	8.91	98.08%
26.00	NCL	Bina	9.50	4.97	0.90	0.88	5.86	98.32%
27.00	NCL	Krishnashila	7.00	4.13	0.57	0.61	4.74	106.71%
28.00	NCL	Block B	5.47	3.44	0.40	0.48	3.91	118.54%
29.00	SECL	Gevra	47.60	18.77	5.73	3.22	21.99	56.29%
30.00	SECL	Dipka	35.00	14.64	4.04	3.16	17.80	78.17%
31.00	SECL	Kushmunda	45.00	12.90	6.38	2.38	15.29	37.35%
32.00	SECL	Manikpur	4.90	3.02	0.37	0.50	3.52	133.74%
33.00	WCL	Niljai Deep	4.30	1.63	0.53	0.30	1.93	56.22%
34.00	WCL	Mungoli	4.00	1.28	0.54	0.42	1.70	78.18%
35.00	WCL	Penganga	6.30	2.90	0.68	0.59	3.49	87.28%
<b>Total</b>			<b>499.87</b>	<b>229.02</b>	<b>53.81</b>	<b>40.11</b>	<b>269.13</b>	<b>74.54%</b>

Particulars	No. of Mines
Mines produced more than 100%	9
Mines produced more than 80% , but less than 100%	10
Mines produced more than 50% , but less than 80%	14
Mines produced less than 50%	2

Note: Asking Rate has been derived by assuming even spread of mining activity across the months. However, the mining operations has seasonality effect.

**Top 35 Mines-wise OBR during Nov 2021(provisional)**

S.No	Subsidiary	Mines	Annual Target (M.Cum)	OBR upto Oct 2021 (M.Cum)	Asking Rate for Nov 2021	OBR during Nov 2021 (M.Cum)	OBR upto Nov 2021 (M.Cum)	Achievement
1	ECL	Rajmahal	33.20	9.37	4.73	1.61	10.98	34.05%
2	ECL	Sonepur Bazar	71.40	35.41	7.15	5.75	41.17	80.45%
3	CCL	Ashoka	20.00	9.05	2.18	1.10	10.15	50.52%
4	CCL	Amarpali	25.00	8.37	3.30	1.28	9.65	38.75%
5	CCL	AKK	7.00	4.26	0.54	0.83	5.09	152.24%
6	CCL	Magadh	15.00	7.67	1.46	1.09	8.76	74.82%
7	MCL	Bhubaneswari	18.00	8.35	1.92	0.99	9.34	51.73%
8	MCL	Lakhanpur	40.00	20.18	3.94	4.24	24.42	107.63%
9	MCL	Bharatpur	12.00	6.75	1.04	0.97	7.72	93.35%
10	MCL	Lingaraj	14.00	6.31	1.53	1.23	7.54	80.25%
11	MCL	Samaleswari	9.50	5.70	0.76	1.11	6.81	146.46%
12	MCL	Kulda	18.00	9.25	1.74	1.32	10.56	75.65%
13	MCL	Kaniha	6.00	3.94	0.41	0.60	4.54	146.19%
14	MCL	Hingula	12.00	11.42	0.12	1.41	12.82	1215.83%
15	MCL	Ananta	20.00	13.66	1.26	2.43	16.10	193.32%
16	MCL	Jagannath	7.00	3.29	0.74	0.56	3.86	76.68%
17	MCL	Belpahar	8.00	1.97	1.20	0.72	2.69	60.20%
18	MCL	Lajkura	10.00	6.34	0.73	1.07	7.41	147.54%
19	MCL	Balram	16.00	8.16	1.56	1.08	9.23	69.02%
20	MCL	Garjanbahal	9.00	4.98	0.80	0.72	5.70	90.03%
21	NCL	Nigahi	78.00	33.81	8.78	5.04	38.85	57.45%
22	NCL	Jayant	48.50	26.88	4.30	5.44	32.32	126.70%
23	NCL	Dudhichua	68.50	28.67	7.91	5.31	33.97	67.06%
24	NCL	Amlohri	56.50	30.00	5.27	4.71	34.71	89.53%
25	NCL	Khadia	50.50	29.07	4.26	4.94	34.01	116.10%
26	NCL	Bina	38.90	23.92	2.98	4.34	28.26	145.93%
27	NCL	Krishnashila	17.50	7.70	1.95	1.72	9.42	88.24%
28	NCL	Block B	17.00	10.70	1.25	1.71	12.41	136.51%
29	SECL	Gevra	65.00	26.36	7.68	4.58	30.94	59.64%
30	SECL	Dipka	36.00	11.76	4.82	1.81	13.57	37.61%
31	SECL	Kushmunda	50.00	19.63	6.03	3.19	22.82	52.86%
32	SECL	Manikpur	13.00	6.78	1.24	1.48	8.26	119.64%
33	WCL	Niljai Deep	30.00	18.77	2.23	2.55	21.31	114.10%
34	WCL	Mungoli	15.50	10.27	1.04	1.43	11.70	137.74%
35	WCL	Penganga	30.00	10.64	3.85	1.92	12.56	49.91%
<b>Total</b>			<b>986.00</b>	<b>479.35</b>	<b>100.66</b>	<b>80.29</b>	<b>559.64</b>	<b>79.76%</b>

Particulars	No. of Mines
Mines performed more than 100%	14
Mines performed more than 80% , but less than 100%	6
Mines performed more than 50% , but less than 80%	11
Mines performed less than 50%	4

## Coal Production in mines of all Subsidiaries of CIL (provisional data)

Fig. in MT

Srl No	Subs	Types of Mines	No of Mines	Annual Target (MT)	During Nov			Upto Nov		
					FY 22	FY 20	Growth %) M-O-M	FY 22	FY 20	Growth %) Y-O-Y
1	ECL	Top 35	2	28.80	1.07	2.43	-55.97	8.30	15.11	-45.08
		Others	2	3.80	0.32	0.53	-39.62	2.92	3.35	-12.90
		Top 75	4	32.60	1.39	2.96	-53.04	11.22	18.46	-39.24
		Rest	74	19.40	0.82	1.37	-40.15	7.12	9.94	-28.31
	<b>Overall ECL</b>		<b>78</b>	<b>52.00</b>	<b>2.21</b>	<b>4.33</b>	<b>-48.96</b>	<b>18.34</b>	<b>28.40</b>	<b>-35.42</b>
2	BCCL	Top 35	0	3.49	0.00	0.00		0.00	0.00	
		Others	9	13.31	1.59	1.72	-7.56	10.58	10.55	0.24
		Top 75	9	16.80	1.59	1.72	-7.56	10.58	10.55	0.24
		Rest	21	16.69	0.97	0.74	31.08	6.66	5.38	23.65
	<b>Overall BCCL</b>		<b>30</b>	<b>30.00</b>	<b>2.56</b>	<b>2.46</b>	<b>4.07</b>	<b>17.23</b>	<b>15.93</b>	<b>8.15</b>
3	CCL	Top 35	4	51.00	3.82	3.38	13.02	23.84	14.56	63.74
		Others	7	9.40	0.60	1.26	-52.38	5.88	9.85	-40.34
		Top 75	11	60.40	4.42	4.64	-4.74	29.72	24.41	21.74
		Rest	31	13.60	1.32	1.20	10.00	6.65	8.40	-20.81
	<b>Overall CCL</b>		<b>42</b>	<b>74.00</b>	<b>5.74</b>	<b>5.84</b>	<b>-1.71</b>	<b>36.37</b>	<b>32.81</b>	<b>10.85</b>
4	MCL	Top 35	14	161.50	14.17	10.50	34.95	96.10	73.17	31.33
		Others	1	1.00	0.70	0.12	483.33	4.18	1.14	266.67
		Top 75	15	162.50	14.87	10.62	40.02	100.28	74.31	34.94
		Rest	4	0.50	0.00	0.07	-100.00	0.00	0.55	-99.09
	<b>Overall MCL</b>		<b>19</b>	<b>163.00</b>	<b>14.87</b>	<b>10.69</b>	<b>39.10</b>	<b>100.28</b>	<b>74.86</b>	<b>33.96</b>
5	NCL	Top 35	8	114.97	10.39	9.18	13.18	72.40	67.11	7.88
		Others	2	4.03	0.44	0.42	4.52	2.71	2.83	-4.24
		Top 75	10	119.00	10.83	9.60	12.80	75.11	69.94	7.39
		Rest	0	0.00	0.00	0.00		0.00	0.00	
	<b>Overall NCL</b>		<b>10</b>	<b>119.00</b>	<b>10.83</b>	<b>9.60</b>	<b>12.81</b>	<b>75.11</b>	<b>69.93</b>	<b>7.40</b>
6	SECL	Top 35	4	132.50	9.28	9.26	0.22	56.07	61.87	-9.37
		Others	10	19.29	1.56	1.02	52.94	9.66	9.69	-0.31
		Top 75	14	151.79	10.84	10.28	5.45	65.73	71.56	-8.15
		Rest	56	20.21	1.39	1.36	2.21	11.95	9.68	23.42
	<b>Overall SECL</b>		<b>70</b>	<b>172.00</b>	<b>12.23</b>	<b>11.64</b>	<b>5.07</b>	<b>77.68</b>	<b>81.24</b>	<b>-4.38</b>
7	WCL	Top 35	3	6.30	1.28	1.54	-16.88	6.79	5.96	13.89
		Others	9	29.08	1.96	2.57	-23.74	11.13	10.74	3.60
		Top 75	12	35.38	3.24	4.11	-21.17	17.92	16.70	7.28
		Rest	48	24.62	2.12	1.33	59.40	10.48	10.35	1.16
	<b>Overall WCL</b>		<b>60</b>	<b>60.00</b>	<b>5.36</b>	<b>5.44</b>	<b>-1.47</b>	<b>28.39</b>	<b>27.05</b>	<b>4.94</b>
8	CIL	Top 35	35	498.56	40.01	36.29	10.25	263.49	237.78	10.81
		Others	40	79.91	7.17	7.64	-6.16	47.05	48.15	-2.29
		Top 75	75	578.47	47.18	43.93	7.40	310.54	285.93	8.61
		Rest of mines	234	91.53	6.62	6.07	9.08	42.86	44.30	-3.24
	<b>Overall CIL</b>		<b>309</b>	<b>670.00</b>	<b>53.80</b>	<b>50.00</b>	<b>7.60</b>	<b>353.40</b>	<b>330.23</b>	<b>7.02</b>

Top 75 = Top 35 + others mines including in top 75 mines

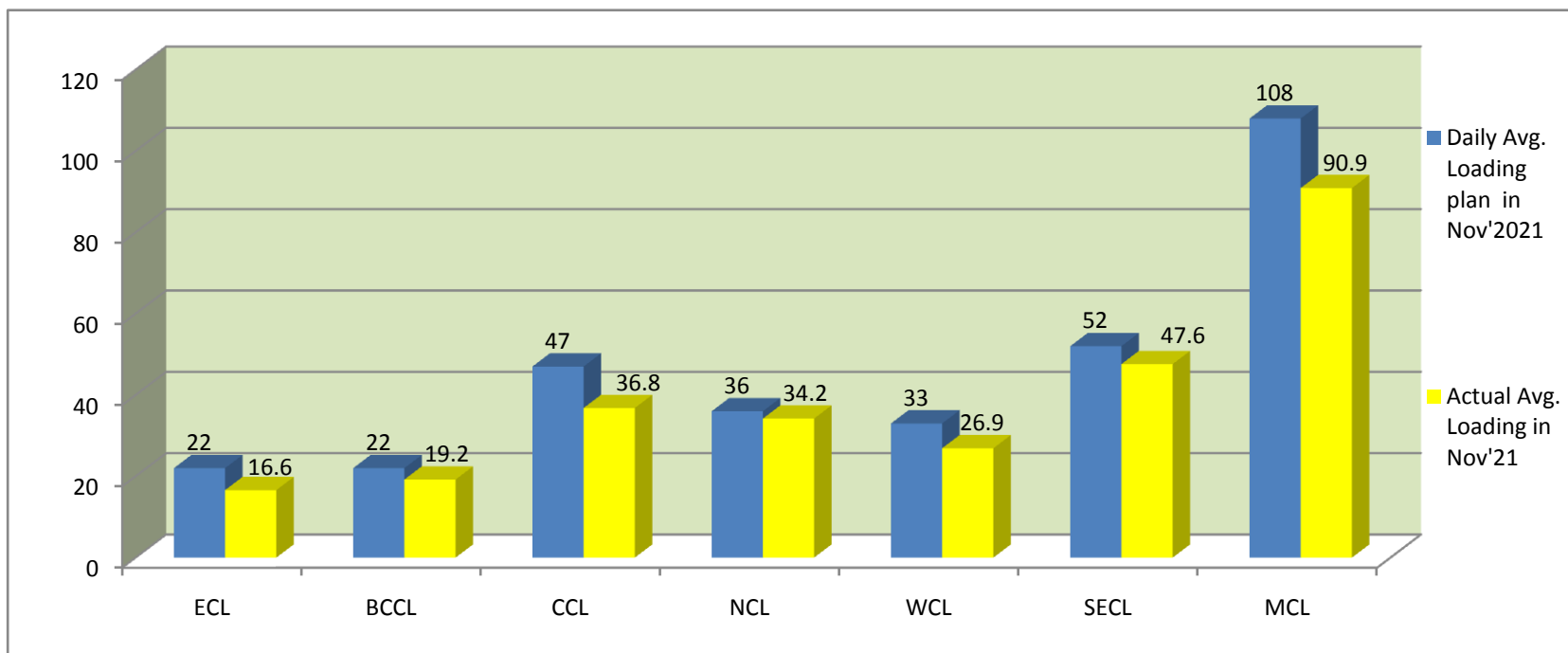
Rest of Mines = other than top 75

overall Mines = Top 75 + rest of mines



### COMPANY-WISE MOVEMENT OF RAKES FOR OVERALL SECTOR PER DAY IN NOV'21(Provisional)

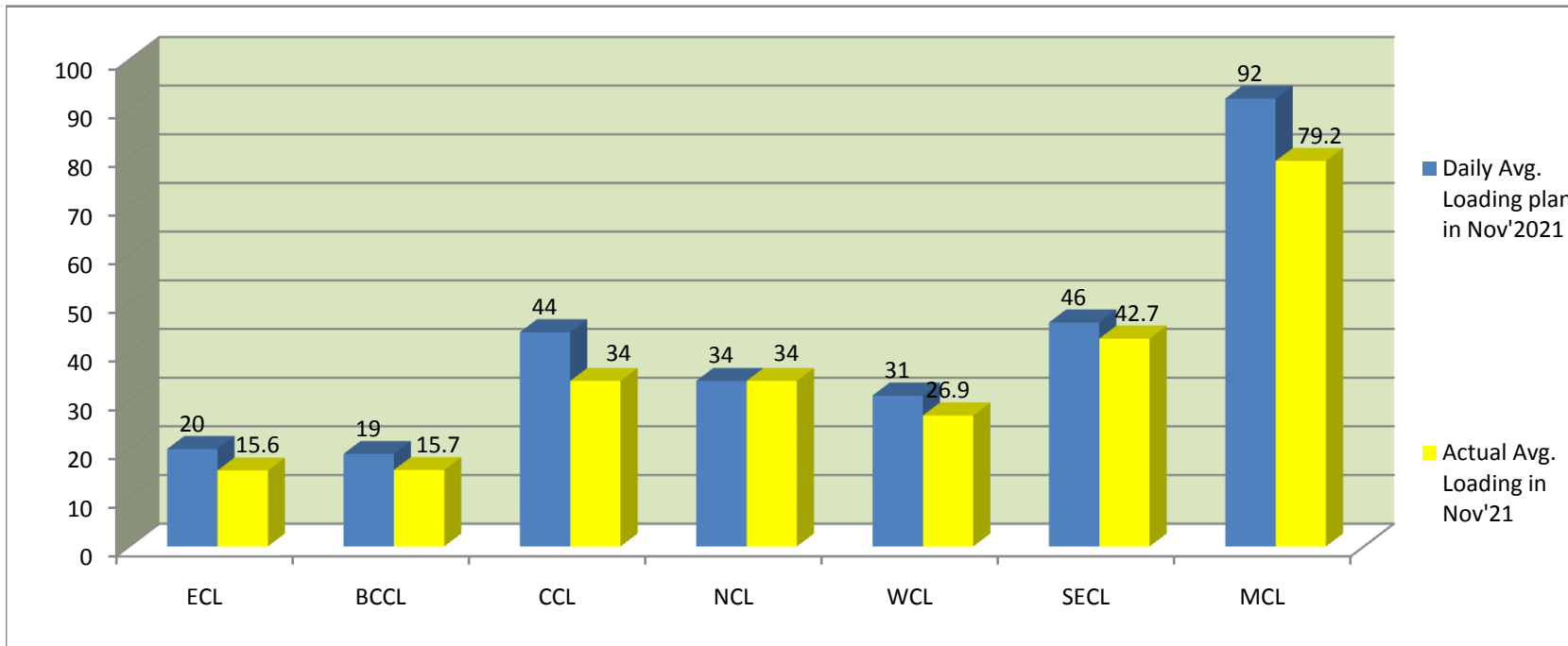
COMPANY	Daily Avg. Loading plan in Nov'2021	Actual Avg. Loading in Nov'21	Achievemnt (%)	Actual Avg. Loading in Nov'20	Monthly Growth%
ECL	22	16.6	75	22.2	-25
BCCL	22	19.2	87	16	20
CCL	47	36.8	78	47.4	-22
NCL	36	34.2	95	28.6	20
WCL	33	26.9	82	26.9	0
SECL	52	47.6	92	49.1	-3
MCL	108	90.9	84	73.8	23
Total	320	272.2	85	264	3



It is important to note here that loading has increased in the month of Nov and Oct 21 as compared to earlier months due to high demand of coal from Power sector.

**COMPANY-WISE MOVEMENT OF RAKES FOR POWER SECTOR PER DAY IN NOV'21(Provisional)**

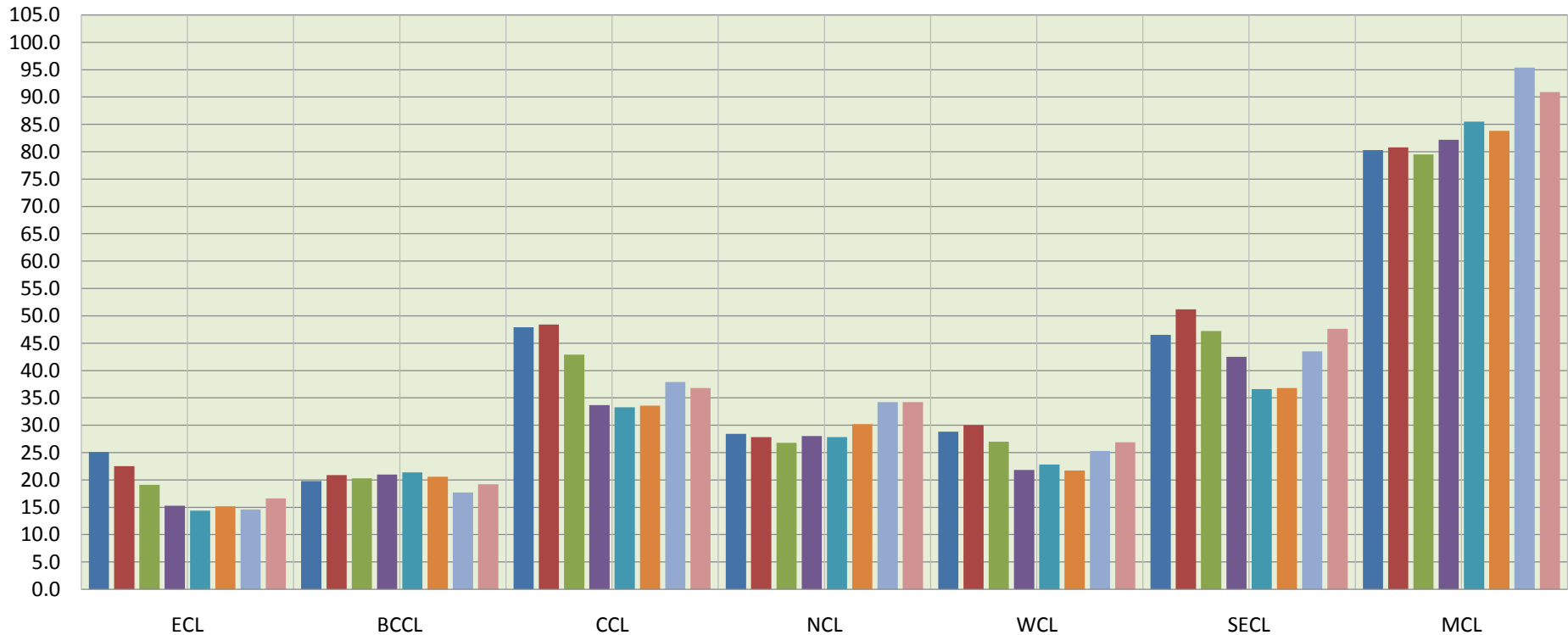
COMPANY	Daily Avg. Loading plan in Nov'2021	Actual Avg. Loading in Nov'21	Achievemnt (%)	Actual Avg. Loading in Nov'20	Monthly Growth%
ECL	20	15.6	78	19.4	-20
BCCL	19	15.7	83	13.2	19
CCL	44	34	77	43.9	-23
NCL	34	34	100	26	31
WCL	31	26.9	87	25.7	5
SECL	46	42.7	93	39.5	8
MCL	92	79.2	86	56.6	40
<b>Total</b>	<b>286</b>	<b>248.1</b>	<b>87</b>	<b>224.3</b>	<b>11</b>



**COMPANY-WISE MOVEMENT OF RAKES FOR ALL SECTOR PER DAY DURING FY 2021-22(Provisional)**

COMPANY	Avg. Loading in April'21	Avg. Loading in May'21	Avg. Loading in June'21	Avg. Loading in July'21	Avg. Loading in Aug'21	Avg. Loading in Sept'21	Avg. Loading in Oct'21	Avg. Loading in Nov'21
ECL	25.1	22.5	19	15.3	14.4	15.2	14.6	16.6
BCCL	19.8	20.9	20	21	21.4	20.6	17.7	19.2
CCL	47.9	48.4	43	33.7	33.3	33.6	37.9	36.8
NCL	28.4	27.8	27	28	27.8	30.2	34.2	34.2
WCL	28.8	30	27	21.8	22.8	21.7	25.3	26.9
SECL	46.5	51.2	47	42.5	36.6	36.8	43.5	47.6
MCL	80.3	80.8	80	82.2	85.5	83.8	95.4	90.9
<b>Total</b>	<b>276.8</b>	<b>281.6</b>	<b>262.8</b>	<b>244.5</b>	<b>241.8</b>	<b>241.9</b>	<b>268.6</b>	<b>272.2</b>

**Actual Rakes Loading Status (All Sector)**



- Avg. Loading in April'21 ■ Avg. Loading in May'21 ■ Avg. Loading in June'21 ■ Avg. Loading in July'21
- Avg. Loading in Aug'21 ■ Avg. Loading in Sept'21 ■ Avg. Loading in Oct'21 ■ Avg. Loading in Nov'21

It may be seen from above Rakes Loading chart that there are not much fluctuation in BCCL, NCL & MCL.

**COMPANY-WISE MOVEMENT OF RAKES FOR POWER SECTOR PER DAY DURING FY 2021-22(Provisional)**

COMPANY	Avg. Loading in April'21	Avg. Loading in May'21	Avg. Loading in June'21	Avg. Loading in July'21	Avg. Loading in Aug'21	Avg. Loading in Sept'21	Avg. Loading in Oct'21	Avg. Loading in Nov'21
ECL	21.10	18.7	16.5	13.7	12.5	15.2	14.5	15.6
BCCL	17.10	18.1	17.5	17.4	18.5	17.4	14.8	15.7
CCL	46.20	45.6	39.3	32	30.4	31.6	36.3	34
NCL	26.60	26.6	24.5	25.5	25.5	29.2	33.9	34
WCL	27.90	29.1	25.3	20.8	22.3	21.6	25.3	26.9
SECL	40.10	44.2	39.3	36	32.9	33.5	41.5	42.7
MCL	64.40	62.5	59.4	65.2	68.7	72.8	88.3	79.2
<b>Total</b>	<b>243.4</b>	<b>244.8</b>	<b>221.8</b>	<b>210.6</b>	<b>210.8</b>	<b>221.3</b>	<b>254.6</b>	<b>248.1</b>

**Actual Rakes Loading Status (Power)**

