

**Monthly Coal Statistics for Oct'2021(Provisional)**

**Coal Production**

India's coal production increased by 28.16 % to 63.83 MT from 49.81 MT during Oct 2021 as compared to Oct 2019. Out of the total production during Oct 2021, Coal India Ltd (CIL) achieved a growth of 26.36% by producing 49.80 MT of Coal, Singareni Collieries Ltd (SCCL) achieved a growth of 4.66% by producing 5.3 MT of Coal and captive blocks registered a growth of 63.79% by producing 8.73 MT of Coal during the period. Coal Production of FY 22 has been compared with FY 20 as FY 21 has been considered an abnormal

*Fig. in MT*

Sl No	Subs	Monthly Target	Production during Oct					Coal Production upto Oct			
			FY 22	Achmt.(%)	FY 21	FY 20	Growth (%) (FY21-FY19)	FY 22	FY 21	FY 20	Growth (%) (FY21-FY19)
1	ECL	4.03	1.83	45.41	3.43	3.23	-43.34	16.14	21.46	24.07	-32.94
2	BCCL	3.10	2.31	74.52	2.17	1.78	29.78	14.68	12.26	13.47	9.00
3	CCL	6.51	5.27	80.95	5.83	4.36	20.87	30.63	26.10	29.97	2.21
4	NCL	10.85	10.85	100.00	10.16	9.34	16.17	64.29	63.69	60.34	6.55
5	WCL	5.58	4.56	81.72	3.51	4.17	9.35	23.03	20.01	21.62	6.53
6	SECL	14.73	10.33	70.13	10.64	8.88	16.33	65.45	64.33	69.60	-5.96
7	MCL	14.73	14.65	99.46	11.08	7.65	91.50	85.40	74.95	64.17	33.09
	<b>CIL</b>	<b>59.53</b>	<b>49.80</b>	<b>83.66</b>	<b>46.82</b>	<b>39.41</b>	<b>26.36</b>	<b>299.62</b>	<b>282.80</b>	<b>283.23</b>	<b>5.79</b>
9	SCCL	5.91	5.30	89.68	3.89	5.07	4.66	35.25	22.02	35.58	-0.93
10	Captives		8.73		4.86	5.33	63.79	44.66	33.31	33.12	34.84
	<b>Grand Total</b>		<b>63.83</b>		<b>55.57</b>	<b>49.81</b>	<b>28.16</b>	<b>379.53</b>	<b>338.13</b>	<b>351.92</b>	<b>7.84</b>

### Coal Despatch

India's coal despatch increased by 39.56 % to 70.41 MT from 50.45 MT during Oct 2021 as compared to Oct 2019. Out of the total production during Oct 2021, Coal India Ltd (CIL) achieved a growth of 40.36% by despatching 56.66 MT of Coal, Singareni Collieries Ltd (SCCL) achieved a growth of 10.33% by despatching 5.42 MT of Coal and captive blocks registered a growth of 61.12% by despatching 8.33 MT of Coal during the period.

SI No	Subs	Monthly Target	Coal Despatch During Oct					Coal Despatch Upto Oct			
			FY 22	Achmt.(%)	FY 21	FY 20	Growth (%) (FY21-FY19)	FY 22	FY 21	FY 20	Growth (%) (FY21-FY19)
1	ECL	3.41	2.32	68.04	3.51	3.10	-25.26	20.94	22.58	25.61	-18.22
2	BCCL	3.26	2.35	72.09	2.28	1.86	26.34	17.88	12.70	15.48	15.50
3	CCL	6.51	5.84	89.71	6.01	4.81	21.41	39.55	32.79	37.91	4.33
4	NCL	11.32	11.38	100.53	9.93	9.36	21.57	68.94	59.62	60.46	14.03
5	WCL	5.89	5.55	94.23	4.61	3.92	41.44	34.20	23.67	27.44	24.65
6	SECL	14.73	12.79	86.83	11.87	9.37	36.46	85.57	73.55	77.11	10.98
7	MCL	16.28	16.43	100.92	12.38	7.91	107.82	97.30	80.16	71.86	35.39
	<b>CIL</b>	<b>61.40</b>	<b>56.66</b>	<b>92.28</b>	<b>50.59</b>	<b>40.37</b>	<b>40.36</b>	<b>364.38</b>	<b>305.17</b>	<b>316.09</b>	<b>15.28</b>
9	SCCL	6.01	5.42	90.12	4.01	4.91	10.33	36.71	21.87	35.42	3.63
10	Captives		8.33		5.26	5.17	61.12	47.05	34.71	33.74	39.46
	<b>Grand Total</b>		<b>70.41</b>		<b>59.85</b>	<b>50.45</b>	<b>39.56</b>	<b>448.14</b>	<b>361.74</b>	<b>385.24</b>	<b>16.33</b>

The Power Sector Despatch has grown by 42.22% to 59.73 MT in the month of Oct 2021 as compared to 42 MT in Oct 2019 owing to unprecedented rise in import prices and spurt in Power demand.

### Coal Despatch to Different Sectors

Fig. in MT

Sectors	Coal Despatch During Aug				Coal Despatch Upto Aug			
	FY 22	FY 21	FY 20	Growth (%) (FY21-FY19)	FY 22	FY 21	FY 20	Growth (%) (FY21-FY19)
Power	59.73	46.98	42.00	42.22	365.74	285.60	308.98	18.37
CPP	4.83	4.20	3.34	44.58	24.10	25.57	28.52	-15.48
Steel	0.73	0.63	0.86	-15.47	4.24	5.11	6.23	-31.95
Cement	0.47	0.68	0.56	-16.04	3.91	3.35	4.85	-19.38
Sponge Iron	0.46	0.65	0.69	-33.91	4.04	5.06	5.68	-28.86
Others	4.19	6.71	3.01	39.44	46.11	37.05	30.99	48.77
<b>Total</b>	<b>70.41</b>	<b>59.85</b>	<b>50.45</b>	<b>39.54</b>	<b>448.14</b>	<b>361.74</b>	<b>385.24</b>	<b>16.33</b>

**Lignite Production**

*Fig. in MT*

Sl No	Company	Production during Oct				Production upto Oct			
		FY 22	FY 21	FY 20	Growth (%) (FY22-FY20)	FY 22	FY 21	FY 20	Growth (%) (FY22-FY20)
1	NLCIL	2.01	1.20	2.25	-10.66	13.63	9.92	12.83	6.20
2	GMDCL	0.63	0.34	0.38	67.90	4.46	2.36	3.81	17.06
3	GIPCL	0.11	0.24	0.07	48.61	0.90	1.60	1.32	-31.52
4	RSMML	0.23	0.07	0.06	278.33	1.13	0.27	0.40	180.45
5	BLMCL	0.50	0.54	0.37	34.15	3.29	3.22	2.97	10.83
6	GHCL	0.00	0.00	0.01	-100.00	0.04	0.00	0.06	-32.20
7	VS Lignite	0.11	0.08	0.00		0.60	0.59	0.29	111.19
8	GSPL	0.14				0.82			
	<b>Grand Total</b>	<b>3.72</b>	<b>2.48</b>	<b>3.14</b>	<b>18.50</b>	<b>24.88</b>	<b>17.97</b>	<b>21.68</b>	<b>14.76</b>

**Lignite Despatch**

*Fig. in MT*

Sl No	Company	Despatch during Oct				Despatch upto Oct			
		FY 22	FY 21	FY 20	Growth (%) (FY22-FY20)	FY 22	FY 21	FY 20	Growth (%) (FY22-FY20)
	NLCIL	2.01	1.18	2.18	-8.06	15.99	10.76	14.98	6.77
2	GMDCL	0.63	0.34	0.38	67.90	4.46	2.36	3.81	17.06
3	GIPCL	0.11	0.24	0.07	48.61	0.90	1.60	1.32	-31.52
4	RSMML	0.23	0.07	0.06	278.33	1.13	0.27	0.40	180.45
5	BLMCL	0.50	0.57	0.37	34.14	3.48	3.58	3.10	12.47
6	GHCL	0.01	0.00	0.01	-12.50	0.04	0.02	0.04	-11.90
7	VS Lignite	0.09	0.07	0.00		0.54	0.55	0.31	73.25
8	GSPL	0.15				0.91			
	<b>Grand Total</b>	<b>3.72</b>	<b>2.48</b>	<b>3.07</b>	<b>21.13</b>	<b>27.46</b>	<b>19.15</b>	<b>23.96</b>	<b>14.59</b>

**Power Generation in Oct 2021**

Qty. (MU)

Source-wise	Oct-21	% share	Oct-20	Oct-19	Growth(%) (Oct22-Oct20)
Coal	80185	68.64	79237	68146	17.67
Lignite	2275	1.95	1734	2410	-5.60

<b>Hydro</b>	17134	14.67	14462	15724	8.97
<b>Nuclear</b>	3996	3.42	3580	3485	14.66
<b>Gas, Naptha &amp; Diesel</b>	3065	2.62	4829	3957	-22.54
<b>RES (Wind, Solar, Biomass &amp; Others)</b>	10173	8.71	9688	6884	47.78
<b>Total</b>	<b>116828</b>	100.00	<b>113530</b>	<b>100606</b>	<b>16.12</b>

The coal based Power generation in the month of Oct 2021 has been 80185 MU in comparison to 75691 MU in Sept 2021 and registered a growth of 5.94%. Coal based power generation has registered a growth of 17.67 % in the month of Oct 2021 in comparison to Oct 2019 . The overall power generation in Oct 2021 has been 16.12% higher than the power generated in Oct 2019.

#### Electricity Prices and Clearing Volume in Indian Energy Exchange

Item	Type	During the period of Oct		
		FY 22	FY 21	Growth (%)
<b>Energy Prices (per Mwh)</b>	RTC	8013.07	2735.65	<b>192.91</b>
	Evening	11094.68	3210.98	<b>245.52</b>
	Day	5860.15	2627.51	<b>123.03</b>
	Night	8104.50	2482.49	<b>226.47</b>
	Morning	6998.26	2654.93	<b>163.59</b>
<b>Market Clearing Volume (BU)</b>	RTC	8828.37	7396.1	<b>19.37</b>
	Evening	9713.74	8956.69	<b>8.45</b>
	Day	8248.36	7302.29	<b>12.96</b>
	Night	8566.72	5942.84	<b>44.15</b>
	Morning	8973.23	7762.62	<b>15.60</b>
	<b>Total</b>	<b>6568307.27</b>	<b>5502701.12</b>	<b>19.37</b>

#### Coal Consumption in TPP (in MT)

*Fig. in MT*

Item	During Sept			Upto Sept		
	FY 22	FY 21	Growth (%)	FY 22	FY 21	Growth (%)
Domestic Coal	50.40	43.60	0.16	307.9	243.02	0.27
Imported Coal Receipt	1.10	4.00	-0.73	16.30	22.20	-0.27
<b>Total Receipt</b>	<b>51.50</b>	<b>47.60</b>	<b>0.08</b>	<b>324.20</b>	<b>265.22</b>	<b>0.22</b>
<b>Coal Consumption</b>	<b>55.8</b>	<b>51.90</b>	<b>0.08</b>	<b>343.20</b>	<b>279.20</b>	<b>0.23</b>

**Despatch of Coal By CIL**

Sectors	Coal Despatch during Oct				Coal Production Upto Oct			
	FY 22	FY 21	FY 20	Growth (%) (FY22-FY20)	FY 22	FY 21	FY 20	Growth (%) (FY22-FY20)
Power	47.33	38.88	33.37	41.83	291.38	236.66	250.75	16.20
CPP	4.66	3.95	3.08	51.35	22.40	24.37	26.53	-15.55
Steel	0.20	0.16	0.17	18.34	1.30	1.15	1.26	3.09
Cement	0.16	0.47	0.34	-52.94	1.93	2.35	3.15	-38.81
Sponge Iron	0.44	0.65	0.69	-36.14	3.94	5.04	5.61	-29.77
Others	3.87	6.47	2.72	42.23	43.43	35.60	28.78	50.88
<b>Total</b>	<b>56.66</b>	<b>50.59</b>	<b>40.37</b>	<b>40.36</b>	<b>364.38</b>	<b>305.17</b>	<b>316.09</b>	<b>15.28</b>

0.835333569

0.826644867

**Despatch of Coal By SCCL**

Sectors	Coal Despatch during Oct				Coal Production Upto Oct			
	FY 22	FY 21	FY 20	Growth (%) (FY22-FY20)	FY 22	FY 21	FY 20	Growth (%) (FY22-FY20)
Power	4.71	3.32	4.19	12.23	30.63	18.47	29.82	2.73
CPP	0.17	0.25	0.26	-34.60	1.70	1.20	1.99	-14.56
Steel								
Cement	0.20	0.19	0.17	15.20	1.61	0.78	1.38	16.33
Sponge Iron	0.02	0.00	0.00	1500.00	0.10	0.02	0.07	48.48
Others	0.33	0.25	0.28	14.44	2.67	1.39	2.16	23.50
<b>Total</b>	<b>5.42</b>	<b>4.01</b>	<b>4.91</b>	<b>10.26</b>	<b>36.71</b>	<b>21.87</b>	<b>35.42</b>	<b>3.64</b>

**Coal Despatch to Different Sectors by Captive and Others**

Sectors	Coal Despatch during Oct				Coal Production Upto Oct			
	FY 22	FY 21	FY 20	Growth (%) (FY22-FY20)	FY 22	FY 21	FY 20	Growth (%) (FY22-FY20)
Power	7.70	4.78	4.44	73.45	43.73	30.47	28.41	53.93
CPP								
Steel	0.53	0.46	0.69	-23.73	2.94	3.96	4.97	-40.85
Cement	0.11	0.02	0.04	147.73	0.37	0.22	0.31	19.16
Sponge Iron								
Others	0.00	0.00	0.00		0.01	0.05	0.05	-80.85
<b>Total</b>	<b>8.33</b>	<b>5.26</b>	<b>5.17</b>	<b>61.00</b>	<b>47.05</b>	<b>34.71</b>	<b>33.74</b>	<b>39.46</b>

**Top 35 Mines Production during Oct 2021(provisional)**

Sr. No	Subsidiary	Mines	Annual Target (MT)	Prod. upto Sept 2021 (MT)	Asking Rate for Oct 2021(MT)	Prod. during Oct 2021 (MT)	Prod. upto Oct 2021 (MT)	Achievement
1.00	ECL	Rajmahal	17.50	3.23	2.43	0.19	3.42	7.78%
2.00	ECL	Sonepur Bazari	11.30	3.10	1.40	0.71	3.81	50.83%
3.00	CCL	Ashoka	13.00	5.19	1.33	1.17	6.36	87.93%
4.00	CCL	Amarpali	20.00	6.63	2.28	1.42	8.05	62.19%
5.00	CCL	AKK	4.50	0.99	0.60	0.27	1.26	45.29%
6.00	CCL	Magadh	10.00	3.50	1.11	0.86	4.35	77.34%
7.00	MCL	Bhubaneswari	28.00	14.94	2.23	2.40	17.33	107.64%
8.00	MCL	Lakhanpur	21.00	10.72	1.75	2.26	12.98	129.03%
9.00	MCL	Bharatpur	10.00	3.10	1.18	0.70	3.79	59.34%
10.00	MCL	Lingaraj	14.00	5.71	1.41	1.07	6.77	75.44%
11.00	MCL	Samaleswari	6.00	1.75	0.72	0.43	2.18	59.68%
12.00	MCL	Kulda	16.00	8.21	1.33	1.62	9.83	121.83%
13.00	MCL	Kaniha	9.00	3.60	0.92	1.02	4.62	110.54%
14.00	MCL	Hingula	7.50	2.73	0.81	0.66	3.39	81.27%
15.00	MCL	Ananta	13.00	5.44	1.29	1.27	6.71	98.32%
16.00	MCL	Jagannath	7.00	2.73	0.73	0.47	3.20	64.34%
17.00	MCL	Belpahar	7.00	2.24	0.81	0.35	2.59	42.86%
18.00	MCL	Lajkura	4.50	1.89	0.44	0.33	2.22	75.25%
19.00	MCL	Balram	6.50	2.26	0.72	0.59	2.84	80.95%
20.00	MCL	Garjanbahal	12.00	4.66	1.25	1.43	6.09	114.21%
21.00	NCL	Nigahi	21.00	10.17	1.84	1.90	12.07	102.77%
22.00	NCL	Jayant	22.00	10.87	1.90	2.07	12.95	109.42%
23.00	NCL	Dudhichua	22.00	8.88	2.23	1.93	10.82	86.56%
24.00	NCL	Amlohri	14.00	4.76	1.57	1.28	6.04	81.55%
25.00	NCL	Khadia	14.00	6.43	1.29	1.25	7.68	96.85%
26.00	NCL	Bina	9.50	4.04	0.93	0.93	4.97	99.95%
27.00	NCL	Krishnashila	7.00	3.48	0.60	0.65	4.13	108.11%
28.00	NCL	Block B	5.47	2.96	0.43	0.48	3.44	111.42%
29.00	SECL	Gevra	47.60	16.35	5.32	2.41	18.77	45.36%
30.00	SECL	Dipka	35.00	11.85	3.94	2.79	14.64	70.69%
31.00	SECL	Kushmunda	45.00	11.11	5.77	1.80	12.90	31.14%
32.00	SECL	Manikpur	4.90	2.44	0.42	0.58	3.02	138.72%
33.00	WCL	Niljai Deep	4.30	1.25	0.52	0.38	1.63	72.72%
34.00	WCL	Mungoli	4.00	1.09	0.50	0.19	1.28	38.44%
35.00	WCL	Penganga	6.30	2.23	0.69	0.67	2.90	96.29%
<b>Total</b>			<b>499.87</b>	<b>190.53</b>	<b>52.69</b>	<b>38.49</b>	<b>229.02</b>	<b>73.05%</b>

Particulars	No. of Mines
Mines produced more than 100%	10
Mines produced more than 80% , but less than 100%	9
Mines produced more than 50% , but less than 80%	10
Mines produced less than 50%	6

Note: Asking Rate has been derived by assuming even spread of mining activity across the months. However, the mining operations has seasonality effect.

**Top 35 Mines-wise OBR during Oct 2021(provisional)**

S.No	Subsidiary	Mines	Annual Target (M.Cum)	OBR upto Sept 2021 (M.Cum)	Asking Rate for Oct 2021	OBR during Oct 2021 (M.Cum)	OBR upto Oct 2021 (M.Cum)	Achievement
1	ECL	Rajmahal	33.20	7.78	4.33	1.59	9.37	36.80%
2	ECL	Sonepur Bazar	71.40	29.36	7.16	6.05	35.41	84.50%
3	CCL	Ashoka	20.00	8.11	2.03	0.94	9.05	46.28%
4	CCL	Amarpali	25.00	7.18	3.03	1.18	8.37	39.02%
5	CCL	AKK	7.00	3.44	0.61	0.82	4.26	135.22%
6	CCL	Magadh	15.00	6.42	1.46	1.25	7.67	85.21%
7	MCL	Bhubaneswari	18.00	7.11	1.85	1.24	8.35	66.59%
8	MCL	Lakhanpur	40.00	16.25	4.04	3.93	20.18	97.06%
9	MCL	Bharatpur	12.00	5.72	1.07	1.03	6.75	96.24%
10	MCL	Lingaraj	14.00	5.00	1.53	1.32	6.31	85.77%
11	MCL	Samaleswari	9.50	4.48	0.85	1.22	5.70	142.34%
12	MCL	Kulda	18.00	7.83	1.73	1.42	9.25	82.06%
13	MCL	Kaniha	6.00	3.27	0.46	0.67	3.94	143.82%
14	MCL	Hingula	12.00	9.32	0.46	2.10	11.42	459.37%
15	MCL	Ananta	20.00	11.02	1.53	2.64	13.66	172.83%
16	MCL	Jagannath	7.00	2.57	0.76	0.73	3.29	96.47%
17	MCL	Belpahar	8.00	1.36	1.13	0.61	1.97	53.85%
18	MCL	Lajkura	10.00	5.20	0.82	1.14	6.34	139.61%
19	MCL	Balram	16.00	6.77	1.57	1.38	8.16	88.10%
20	MCL	Garjanbahal	9.00	4.23	0.81	0.75	4.98	92.13%
21	NCL	Nigahi	78.00	28.09	8.50	5.72	33.81	67.27%
22	NCL	Jayant	48.50	22.39	4.45	4.50	26.88	101.09%
23	NCL	Dudhichua	68.50	24.12	7.56	4.55	28.67	60.17%
24	NCL	Amlohri	56.50	25.36	5.30	4.64	30.00	87.41%
25	NCL	Khadia	50.50	23.87	4.54	5.20	29.07	114.63%
26	NCL	Bina	38.90	19.75	3.26	4.17	23.92	127.77%
27	NCL	Krishnashila	17.50	6.24	1.92	1.46	7.70	76.22%
28	NCL	Block B	17.00	8.86	1.39	1.84	10.70	132.89%
29	SECL	Gevra	65.00	22.14	7.30	4.23	26.36	57.89%
30	SECL	Dipka	36.00	9.93	4.44	1.83	11.76	41.20%
31	SECL	Kushmunda	50.00	16.46	5.71	3.17	19.63	55.50%
32	SECL	Manikpur	13.00	5.43	1.29	1.35	6.78	104.55%
33	WCL	Niljai Deep	30.00	15.78	2.42	2.98	18.77	123.13%
34	WCL	Mungoli	15.50	8.78	1.15	1.49	10.27	130.15%
35	WCL	Penganga	30.00	8.55	3.65	2.09	10.64	57.10%
<b>Total</b>			<b>986.00</b>	<b>398.15</b>	<b>100.13</b>	<b>81.20</b>	<b>479.35</b>	<b>81.10%</b>

Particulars	No. of Mines
Mines performed more than 100%	13
Mines performed more than 80% , but less than 100%	10
Mines performed more than 50% , but less than 80%	8
Mines performed less than 50%	4

## Coal Production in mines of all Subsidiaries of CIL (provisional data)

Fig. in MT

Srl No	Subs	Types of Mines	No of Mines	Annual Target (MT)	During Oct			Upto Oct		
					FY 22	FY 20	Growth %) M-O-M	FY 22	FY 20	Growth %) Y-O-Y
1	ECL	Top 35	2	28.80	0.90	1.72	-47.67	7.23	12.68	-43.00
		Others	2	3.80	0.34	0.46	-26.09	2.60	2.82	-7.87
		Top 75	4	32.60	1.24	2.18	-43.12	9.83	15.50	-36.61
		Rest	74	19.40	0.59	1.05	-43.81	6.31	8.57	-26.32
	<b>Overall ECL</b>	<b>78</b>	<b>52.00</b>	<b>1.83</b>	<b>3.23</b>	<b>-43.34</b>	<b>16.14</b>	<b>24.07</b>	<b>-32.95</b>	
2	BCCL	Top 35	0	3.49	0.00	0.00		0.00	0.00	
		Others	9	13.31	1.46	1.20	21.67	8.99	8.83	1.76
		Top 75	9	16.80	1.46	1.20	21.67	8.99	8.83	1.76
		Rest	21	16.69	0.85	0.58	46.55	5.70	4.64	22.74
	<b>Overall BCCL</b>	<b>30</b>	<b>30.00</b>	<b>2.31</b>	<b>1.78</b>	<b>29.78</b>	<b>14.68</b>	<b>13.47</b>	<b>8.98</b>	
3	CCL	Top 35	4	51.00	3.71	2.27	63.57	20.02	11.18	79.08
		Others	7	9.40	0.56	1.16	-52.07	5.28	8.59	-38.57
		Top 75	11	60.40	4.27	3.43	24.46	25.30	19.77	27.96
		Rest	31	13.60	1.00	0.93	7.63	5.33	10.20	-47.73
	<b>Overall CCL</b>	<b>42</b>	<b>74.00</b>	<b>5.27</b>	<b>4.36</b>	<b>20.87</b>	<b>30.63</b>	<b>29.97</b>	<b>2.20</b>	
4	MCL	Top 35	14	161.50	14.57	7.46	95.31	84.67	62.67	35.10
		Others	1	1.00	0.07	0.13	-46.15	0.51	1.02	-50.49
		Top 75	15	162.50	14.64	7.59	92.89	85.18	63.69	33.73
		Rest	4	0.50	0.01	0.06	-83.33	0.23	0.48	-53.12
	<b>Overall MCL</b>	<b>19</b>	<b>163.00</b>	<b>14.65</b>	<b>7.65</b>	<b>91.50</b>	<b>85.40</b>	<b>64.17</b>	<b>33.08</b>	
5	NCL	Top 35	8	114.97	10.49	8.98	16.82	62.01	57.94	7.02
		Others	2	4.03	0.36	0.35	2.86	2.28	2.40	-5.00
		Top 75	10	119.00	10.85	9.33	16.29	64.29	60.34	6.54
		Rest	0	0.00	0.00	0.00		0.00	0.00	
	<b>Overall NCL</b>	<b>10</b>	<b>119.00</b>	<b>10.85</b>	<b>9.34</b>	<b>16.17</b>	<b>64.29</b>	<b>60.34</b>	<b>6.55</b>	
6	SECL	Top 35	4	132.50	7.59	6.78	11.95	46.79	52.60	-11.05
		Others	10	19.29	1.60	0.83	92.77	8.10	8.67	-6.57
		Top 75	14	151.79	9.19	7.61	20.76	54.89	61.27	-10.41
		Rest	56	20.21	1.14	1.27	-10.24	10.56	8.33	26.77
	<b>Overall SECL</b>	<b>70</b>	<b>172.00</b>	<b>10.33</b>	<b>8.88</b>	<b>16.33</b>	<b>65.45</b>	<b>69.60</b>	<b>-5.96</b>	
7	WCL	Top 35	3	6.30	1.19	1.06	12.26	5.51	4.42	24.62
		Others	9	29.08	1.71	1.95	-12.31	9.17	8.18	12.07
		Top 75	12	35.38	2.90	3.01	-3.65	14.68	12.60	16.47
		Rest	48	24.62	1.66	1.16	43.10	8.36	9.02	-7.37
	<b>Overall WCL</b>	<b>60</b>	<b>60.00</b>	<b>4.56</b>	<b>4.17</b>	<b>9.35</b>	<b>23.03</b>	<b>21.62</b>	<b>6.52</b>	
8	CIL	Top 35	35	498.56	38.45	28.27	36.02	226.23	201.49	12.28
		Others	40	79.91	6.10	6.08	0.26	36.91	40.51	-8.88
		Top 75	75	578.47	44.55	34.35	29.69	263.14	242.00	8.73
		Rest of mines	234	91.53	5.25	5.06	3.77	36.48	41.24	-11.54
	<b>Overall CIL</b>	<b>309</b>	<b>670.00</b>	<b>49.80</b>	<b>39.41</b>	<b>26.36</b>	<b>299.62</b>	<b>283.24</b>	<b>5.78</b>	

Top 75 = Top 35 + others mines including in top 75 mines

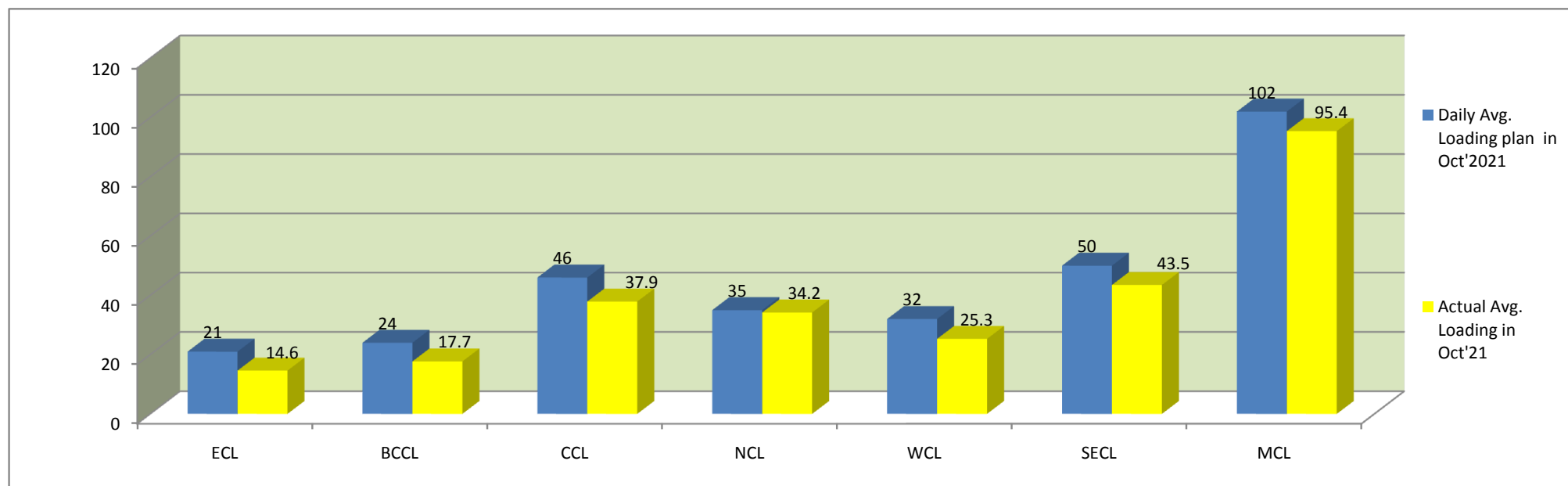
Rest of Mines = other than top 75

overall Mines = Top 75 + rest of mines



**COMPANY-WISE MOVEMENT OF RAKES FOR OVERALL SECTOR PER DAY IN OCT'21(Provisional)**

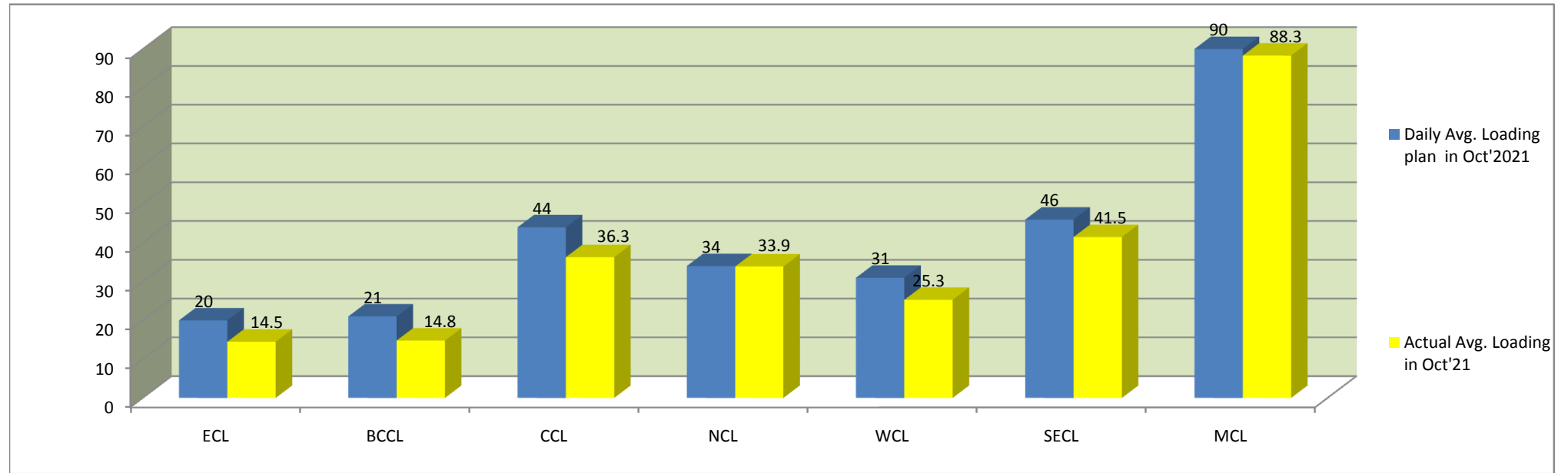
COMPAN	Daily Avg. Loading plan in Oct'2021	Actual Avg. Loading in Oct'21	Achievemnt (%)	Actual Avg. Loading in Oct'20	Monthly Growth%	Actual Avg. Loading in April'21	Actual Avg. Loading in May'21	Actual Avg. Loading in June'21	Actual Avg. Loading in July'21	Actual Avg. Loading in Aug'21	Actual Avg. Loading in Sept'21
ECL	21	14.6	70	20.4	-28	25.1	22.5	19	15.3	14.4	15.2
BCCL	24	17.7	74	15.4	15	19.8	20.9	20	21	21.4	20.6
CCL	46	37.9	82	42.6	-11	47.9	48.4	43	33.7	33.3	33.6
NCL	35	34.2	98	29.9	14	28.4	27.8	27	28	27.8	30.2
WCL	32	25.3	79	27.1	-7	28.8	30	27	21.8	22.8	21.7
SECL	50	43.5	87	47.9	-9	46.5	51.2	47	42.5	36.6	36.8
MCL	102	95.4	94	69.7	37	80.3	80.8	80	82.2	85.5	83.8
Total	310	268.6	87	253	6	276.8	281.6	262.8	244.5	241.8	241.9



It is important to note here that loading has increased in the month of Oct 21 as compared to earlier months due to high demand of coal from Power sector. Overall loading achievement of NCL and MCL is 98% and 94% respectively.

**COMPANY-WISE MOVEMENT OF RAKES FOR POWER SECTOR PER DAY IN OCT'21(Provisional)**

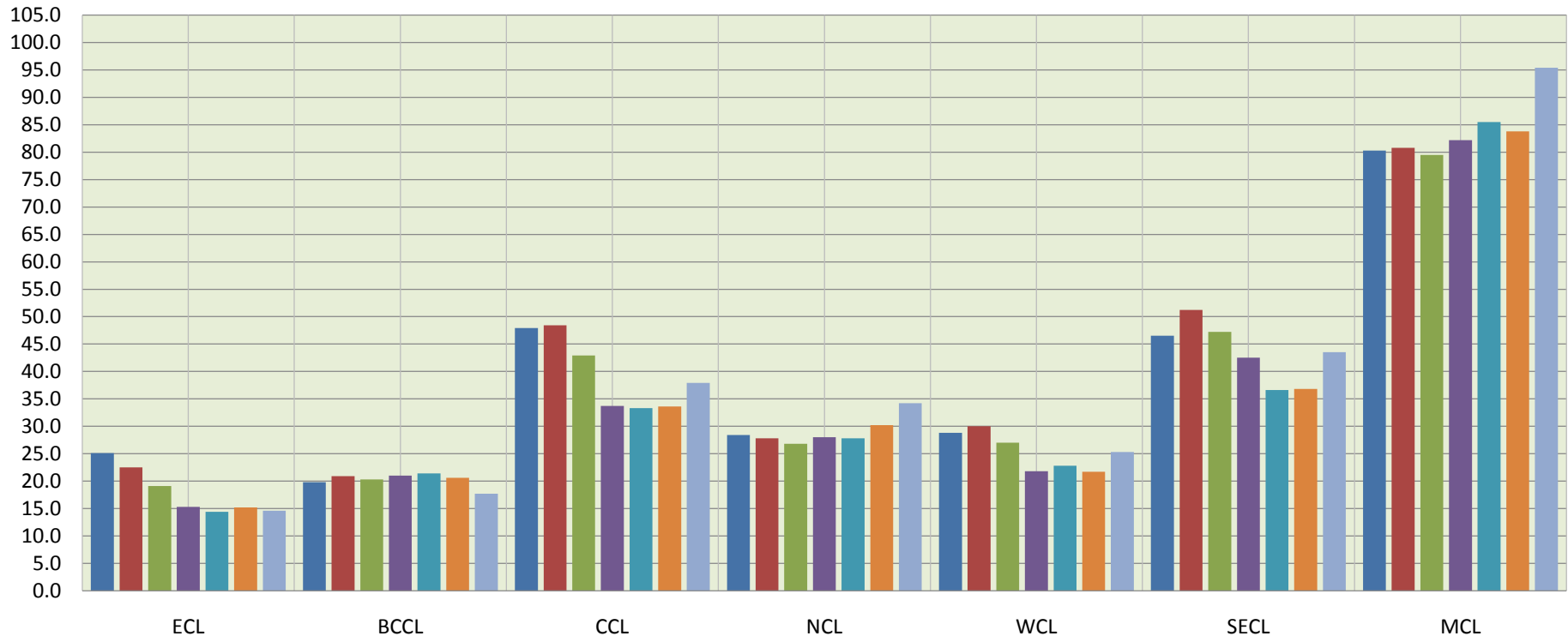
COMPAN	Daily Avg. Loading plan in Oct'2021	Actual Avg. Loading in Oct'21	Achievemnt (%)	Actual Avg. Loading in Oct'20	Monthly Growth%	Actual Avg. Loading in April'21	Actual Avg. Loading in May'21	Actual Avg. Loading in June'21	Actual Avg. Loading in July'21	Actual Avg. Loading in Aug'21	Actual Avg. Loading in Sept'21
ECL	20	14.5	73	18.4	-21	21.10	18.7	16.5	13.7	12.5	15.2
BCCL	21	14.8	70	13.5	10	17.10	18.1	17.5	17.4	18.5	17.4
CCL	44	36.3	83	39.6	-8	46.20	45.6	39.3	32	30.4	31.6
NCL	34	33.9	100	26.3	29	26.60	26.6	24.5	25.5	25.5	29.2
WCL	31	25.3	82	26	-3	27.90	29.1	25.3	20.8	22.3	21.6
SECL	46	41.5	90	39.2	6	40.10	44.2	39.3	36	32.9	33.5
MCL	90	88.3	98	53.2	66	64.40	62.5	59.4	65.2	68.7	72.8
Total	286	254.6	89	216.2	18	243.40	244.8	221.8	210.6	210.8	221.3



**COMPANY-WISE MOVEMENT OF RAKES FOR ALL SECTOR PER DAY DURING FY 2021-22(Provisional)**

COMPANY	Avg. Loading in April'21	Avg. Loading in May'21	Avg. Loading in June'21	Avg. Loading in July'21	Avg. Loading in Aug'21	Avg. Loading in Sept'21	Avg. Loading in Oct'21
ECL	25.1	22.5	19	15.3	14.4	15.2	14.6
BCCL	19.8	20.9	20	21	21.4	20.6	17.7
CCL	47.9	48.4	43	33.7	33.3	33.6	37.9
NCL	28.4	27.8	27	28	27.8	30.2	34.2
WCL	28.8	30	27	21.8	22.8	21.7	25.3
SECL	46.5	51.2	47	42.5	36.6	36.8	43.5
MCL	80.3	80.8	80	82.2	85.5	83.8	95.4
<b>Total</b>	<b>276.8</b>	<b>281.6</b>	<b>262.8</b>	<b>244.5</b>	<b>241.8</b>	<b>241.9</b>	<b>268.6</b>

**Actual Rakes Loading Status (All Sector)**



- Avg. Loading in April'21 ■ Avg. Loading in May'21 ■ Avg. Loading in June'21 ■ Avg. Loading in July'21
- Avg. Loading in Aug'21 ■ Avg. Loading in Sept'21 ■ Avg. Loading in Oct'21

It may be seen from above Rakes Loading chart that there are not much fluctuation in BCCL, NCL & MCL.

**COMPANY-WISE MOVEMENT OF RAKES FOR POWER SECTOR PER DAY DURING FY 2021-22(Provisional)**

COMPANY	Avg. Loading in April'21	Avg. Loading in May'21	Avg. Loading in June'21	Avg. Loading in July'21	Avg. Loading in Aug'21	Avg. Loading in Sept'21	Avg. Loading in Oct'21
ECL	21.10	18.7	16.5	13.7	12.5	15.2	14.5
BCCL	17.10	18.1	17.5	17.4	18.5	17.4	14.8
CCL	46.20	45.6	39.3	32	30.4	31.6	36.3
NCL	26.60	26.6	24.5	25.5	25.5	29.2	33.9
WCL	27.90	29.1	25.3	20.8	22.3	21.6	25.3
SECL	40.10	44.2	39.3	36	32.9	33.5	41.5
MCL	64.40	62.5	59.4	65.2	68.7	72.8	88.3
<b>Total</b>	<b>243.4</b>	<b>244.8</b>	<b>221.8</b>	<b>210.6</b>	<b>210.8</b>	<b>221.3</b>	<b>254.6</b>

**Actual Rakes Loading Status (Power)**

