



MONTHLY STATISTICAL REPORT
MINISTRY OF COAL
APRIL 2021



O/o Deputy Director General
A-Wing, 5th Floor, Lok Nayak Bhavan,
Lok Nayak Bhavan, New Delhi-110003.

Preface

The Monthly Coal Statistics for the month of April 2021 is placed below. Ministry of Coal gets various reports/returns from CIL along with its Subsidiaries, SCCL and NLCIL, Monthly DO Letters from CMDs of all Companies to the Secretary (Coal) and monthly production and dispatch information of Captive Block and Lignite Block from CCO. Based on these sources, compilation has been made for the use of various stakeholders.

It is to inform that all the information provided in the report is provisional.

Table of Contents

S. No	Chapter Name	Table	Page
1	All India Production & Despatch	Summary of Coal Production	1
		Summary of State-wise Coal Production	2
		Summary of OBR	3
		Summary of Coal Despatch	4
		Sector-wise Coal Despatch	5
		Summary of Lignite Production & Despatch	6
		Coal Production By "Others"	8-9
2	Analysis of Big Mines of CIL	Production Analysis of Big Mines of CIL	10-25
		OBR Analysis of Big Mines of CIL	26-41
3	Exploration	Drilling Performance	42
4	Performance of Coal PSUs	Production Status	43-46
		Productivity	47
		OBR Status	48-49
		HEMM Performance	50-52
		Mode-Wise Coal Despatch	53-55
		Detailed Sector-Wise Coal Despatch	55-58
		Vendible Stock Position	59
5	Performance of NLCIL	Lignite Production Status	60
		Status of Power Production	60
		Productivity in Lignite Mining and Power	60
		OBR Status	61
		HEMM Performance	61
		Power and Lignite Sales	61
6	Financial Performance	Capital Expenditure Status	62
		Manpower Position	63
		Sundry Debtors Status	63
		Age-wise Debtors	63
		Auction Status of Coal in CIL	65-67
7	Electricity Generation	Electricity Generation and Coal Consumption	68
8	Coal Import	Coal Import information	69-79
9	Projects of PSUs	Major Ongoing Projects of CIL	80-84
		Major Ongoing Projects of NLCIL	85-90
		Major Ongoing Projects of SCCL	91-106

All India Production & Despatch

1. The overall Coal production increased by 9.73 %(51.62 MT) in April 2021, compared to 47.04 MT achieved during April 2020. CIL, SCCL and Others have also registered a growth of 3.74%, 61.90 % and 33.03 % respectively in April 2021. The Company-wise details of coal production from CIL,SCCL and others are given below:-

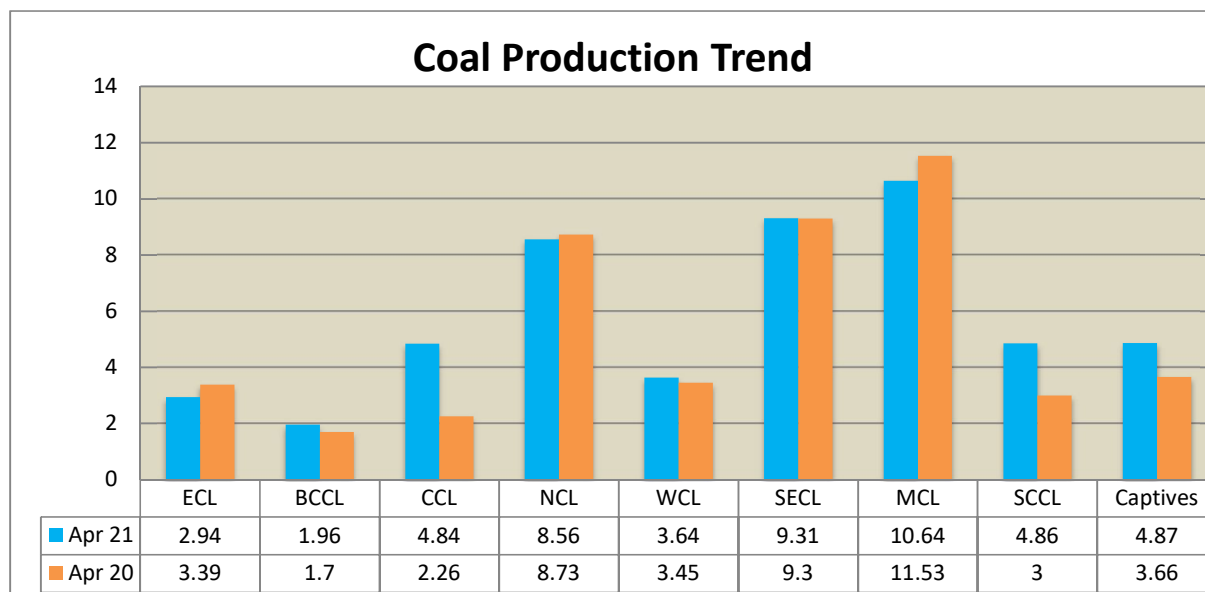


Table 1.1: Coal Production

Fig. in MT

Sl No	Subs	Monthly Target	Production During Apr			
			FY 22	Achievement (%)	FY 21	Growth (%) M-o-M
1	ECL	3.63	2.94	0.81	3.39	-13.27
2	BCCL	2.10	1.96	0.93	1.70	15.29
3	CCL	5.08	4.84	0.95	2.26	114.16
4	NCL	8.76	8.56	0.98	8.73	-1.95
5	WCL	4.35	3.64	0.84	3.45	5.51
6	SECL	11.60	9.31	0.80	9.30	0.11
7	MCL	11.64	10.64	0.91	11.53	-7.72
	CIL	47.16	41.89	0.89	40.38	3.74
9	SCCL	5.78	4.86	0.84	3.00	61.90
10	Captives		4.87		3.66	33.03
	Grand Total	52.94	51.62	0.97	47.04	9.73

1.1a 77% of coal have been produced in Odisha, MP, CG & JH in the month April 2021.

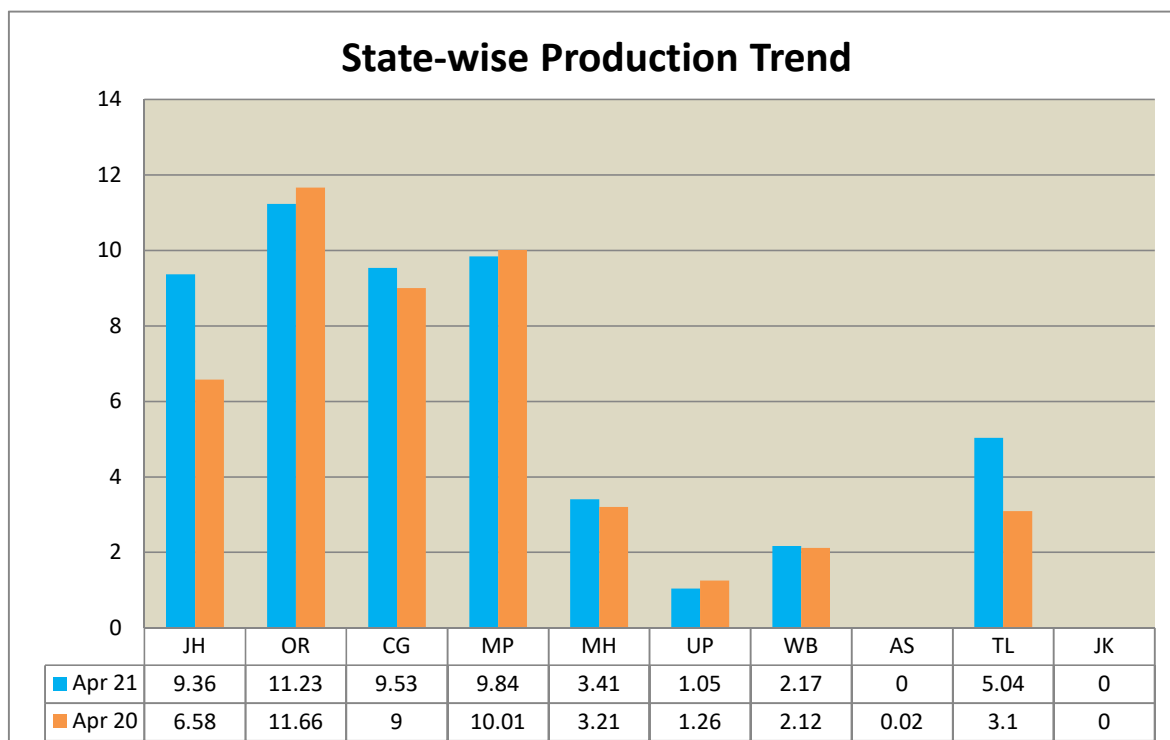


Table 1.1a: State-wise Coal Production

Fig. in MT

Sl No	State	Production During Apr			
		FY 22	% share	FY 21	Growth (%)
1	JH	9.36	18.13	6.58	42.22
2	OR	11.23	21.75	11.66	-3.75
3	CG	9.53	18.46	9.00	5.90
4	MP	9.84	19.06	10.01	-1.70
5	MH	3.41	6.60	3.21	6.20
6	UP	1.05	2.03	1.26	-16.40
7	WB	2.17	4.20	2.12	2.37
8	AS	0.00	0.00	0.02	-100.00
9	TL	5.04	9.77	3.19	58.11
10	JK	0.00	0.00	0.00	0.00
Grand Total		51.62	100.00	47.04	9.73

1.2. CIL has registered a growth of 3.38 % by removing 115.98 M.Cum of OBR in April 2021 compared to 112.19 M.Cum during April 2020. SCCL has also registered a growth of 25.58%, in April 2021. The Company-wise details of OBR of CIL and SCCL are given below:-

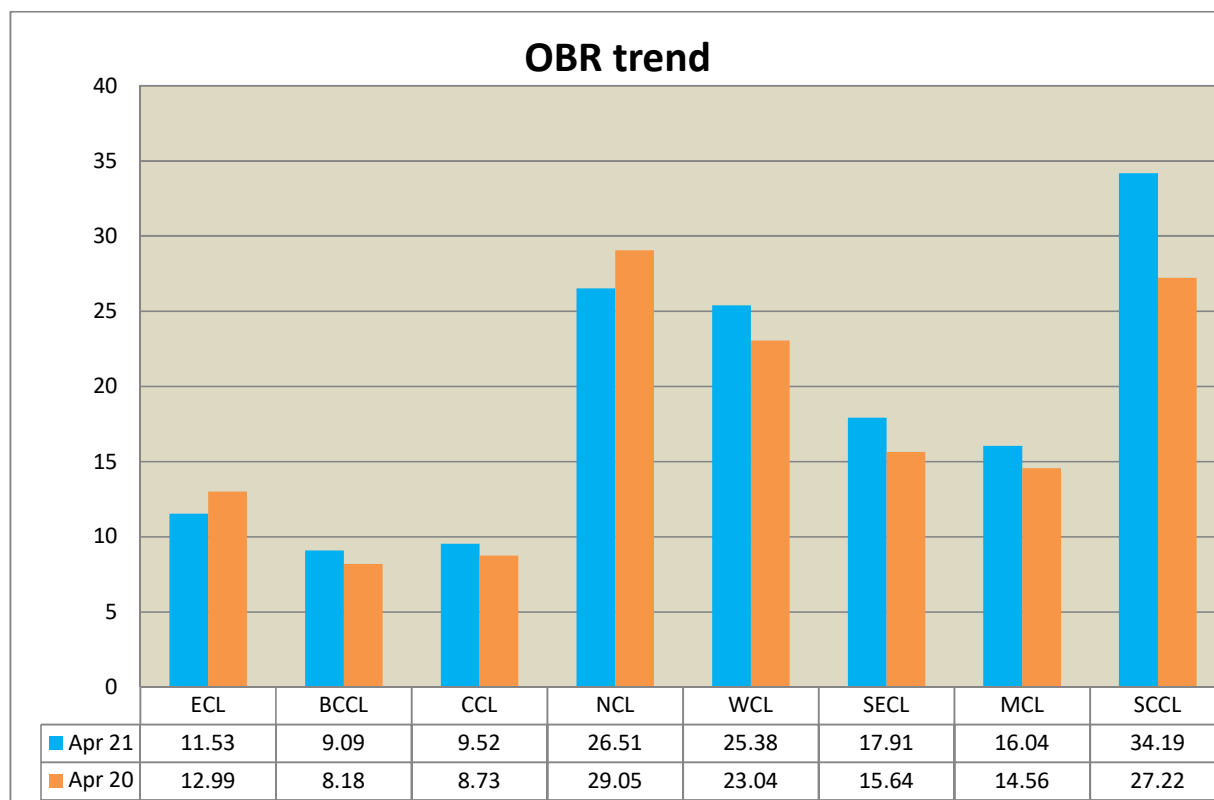


Table 1.2: OBR

Fig. in M.Cum

Sl No	Subs	Monthly Target	OBR during Apr			
			FY 22	Achievement (%)	FY 21	Growth (%)
1	ECL	13.93	11.53	0.83	12.99	-11.29
2	BCCL	9.84	9.09	0.92	8.18	11.12
3	CCL	9.05	9.52	1.05	8.73	9.05
4	NCL	33.57	26.51	0.79	29.05	-8.74
5	WCL	23.24	25.38	1.09	23.04	10.18
6	SECL	18.66	17.91	0.96	15.64	14.51
7	MCL	17.14	16.04	0.94	14.56	10.16
	CIL	125.43	115.98	0.92	112.19	3.38
9	SCCL	37.39	34.19	0.91	27.22	25.58
	Grand Total	162.82	150.17	1.84	139.41	28.96

1.3 The overall Coal Despatch increased by 42.29%(65.48 MT) in April 2021, compared to 46.02 MT achieved during the same month of previous year. CIL, SCCL and Others have also registered a growth of 38.68 %, 79.10 % and 49.58 % respectively in April 2021. The Company-wise details of coal production from CIL,SCCL and others are given below:-

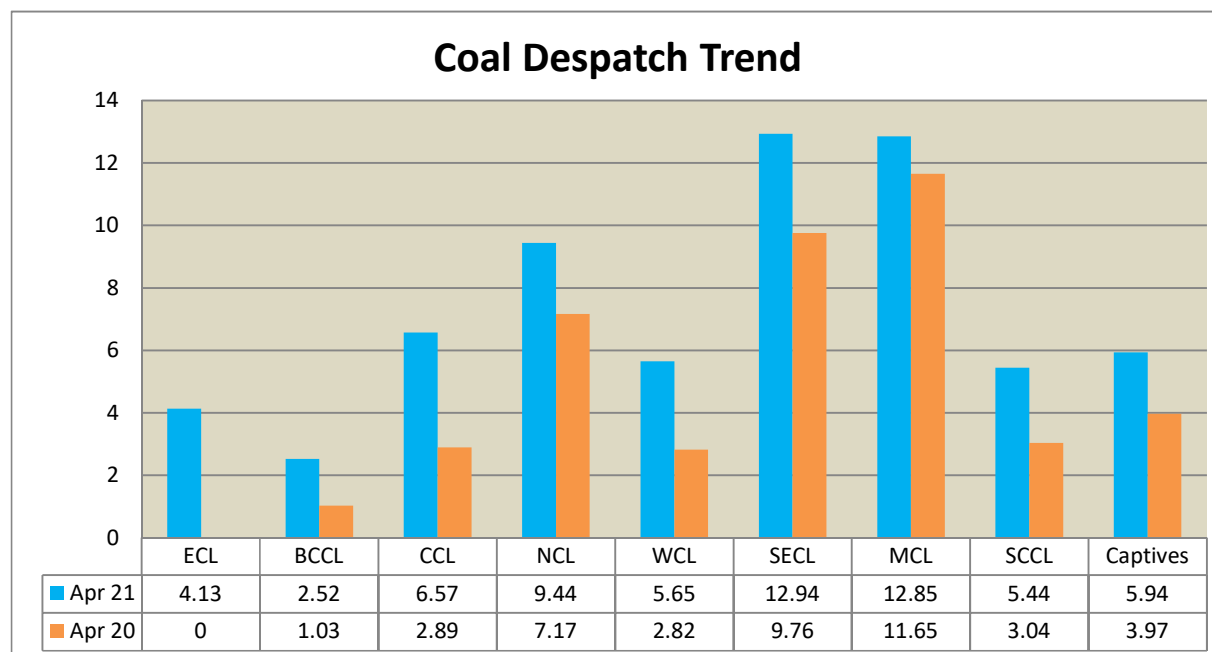


Table 1.3: Coal Despatch

Fig. in MT

Sl No	Subs	Monthly Target	Despatch During Apr			
			FY 22	Achievement (%)	FY 21	Growth (%) M-o-M
1	ECL	5.06	4.13	0.82	3.69	11.92
2	BCCL	2.90	2.52	0.87	1.03	144.66
3	CCL	7.85	6.57	0.84	2.89	127.34
4	NCL	10.40	9.44	0.91	7.17	31.66
5	WCL	6.75	5.65	0.84	2.82	100.35
6	SECL	17.13	12.94	0.76	9.76	32.58
7	MCL	14.80	12.85	0.87	11.65	10.30
	CIL	64.89	54.10	0.83	39.01	38.68
9	SCCL	5.88	5.44	0.93	3.04	79.05
10	Captives		5.94		3.97	49.62
	Grand Total	70.77	65.48	0.93	46.02	42.29

1.4 From table given below, it is observed that Despatch of coal to power sector is 52.48 MT during Apr 2021 against 38.14 MT during the same period last year with a growth of 37.62%.

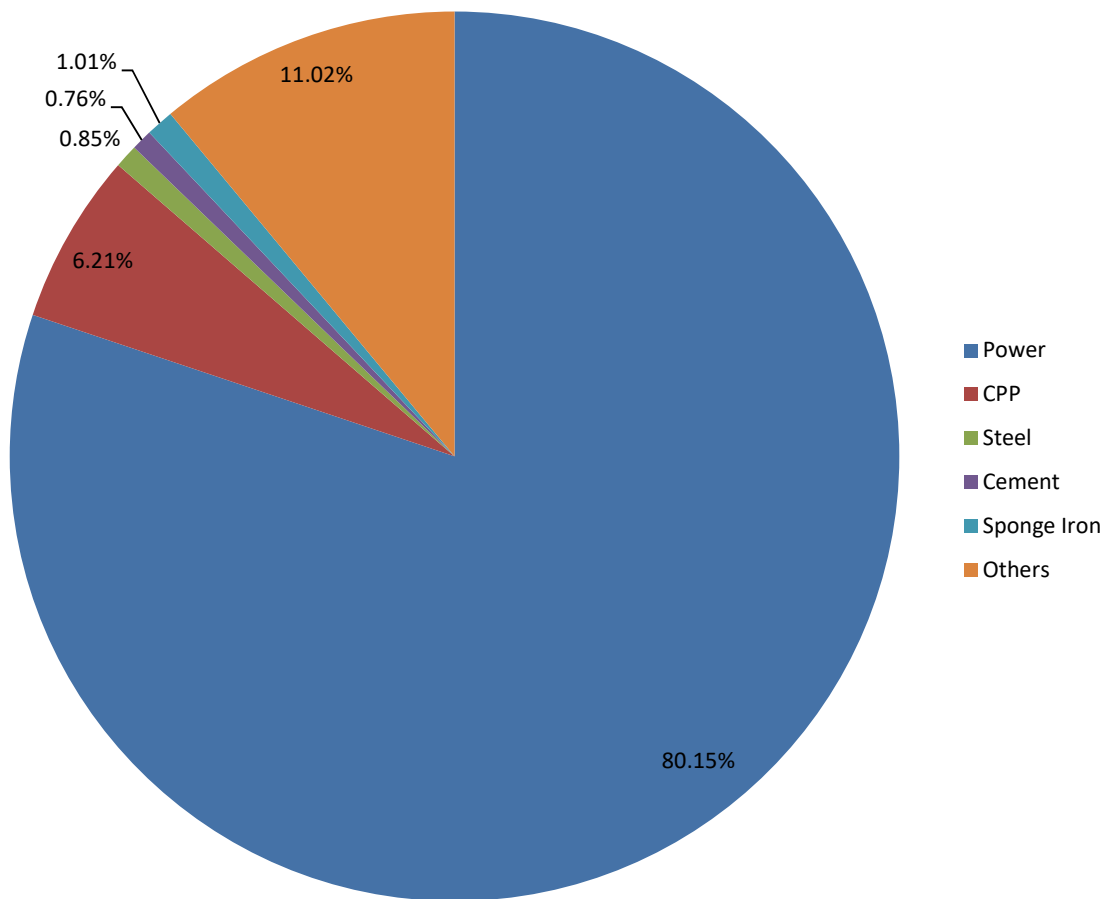


Table 1.4: Coal Despatch to Different Sectors

Fig. in MT

Sl No	Company	Coal Despatch During April		
		FY 22	FY 21	Growth (%)
1	Power	52.48	38.14	37.62
2	CPP	4.07	3.88	4.74
3	Steel	0.55	0.80	-30.40
4	Cement	0.50	0.10	385.44
5	Sponge Iron	0.66	0.46	43.24
6	Others	7.22	2.64	
Grand Total		65.48	46.02	42.29

1.5 The overall Lignite production increased by 33.09 % to 3.129 MT in April 2021, compared to 2.351 MT achieved during the same month of previous year. During the period, NLCIL's production of lignite increased by 34.30 % to 1.441 MT in April 2021, compared to 1.073 MT achieved during April 2020.

Table 1.5: Lignite Production

Fig. in MT

Sl No	Company	Production During Apr		
		FY 22	FY 21	Growth (%) M-o-M
1	NLCIL	1.441	1.073	34.30
2	GMDCL	0.718	0.348	106.32
3	GIPCL	0.363	0.472	-23.09
4	RSMML	0.124	0.035	254.29
5	BLMCL	0.389	0.340	14.41
6	GHCL	0.024	0.000	
7	VS Lignite	0.070	0.083	-15.66
Grand Total		3.129	2.351	33.09

1.6 The overall Lignite dispatch increased by 19.96 % to 4.027 MT in April 2021, compared to 3.357 MT achieved during the same month of previous year. During the period, NLCIL's dispatch of lignite increased by 9.64 % to 2.252 MT in April 2021, compared to 2.054 MT achieved during the same month of previous year. The Company-wise details of Lignite Production and Despatch are given below:-

Table 1.6: Lignite Despatch

Fig. in MT

Sl No	Company	Despatch During Apr		
		FY 22	FY 21	Growth (%) M-o-M
1	NLCIL	2.252	2.054	9.64
2	GMDCL	0.718	0.348	106.32
3	GIPCL	0.363	0.472	-23.09
4	RSMML	0.124	0.035	254.29
5	BLMCL	0.478	0.368	29.89
6	GHCL	0.007	0.000	
7	VS Lignite	0.085	0.080	6.25
Grand Total		4.027	3.357	19.96

Table 1.1 (A): Details of Coal Production By "Others"

Figures in MT

Name of Coal Block/Company	Prod. during the month			
	FY 22	FY 21	Growth(%)	M-o-M
JKML	0.001	0.001	0.00	
DVC	0.000	0.000		
IISCOCJ	0.005	0.010	-50.00	
IISCOR	0.006	0.003	100.00	
JSMDCL	0.002	0.008	-75.00	
TATA	0.368	0.505	-27.13	
NTPC/Pakri Barwadiah	0.606	0.627	-3.35	
CESC / Sarshatali	0.171	0.168	1.79	
GMR-Talabira -I	0.000	0.000		
HIL-Gare Palma IV/5	0.000	0.000		
BALCO / Chotia	0.000	0.000		
BALCO / Chotia-II	0.000	0.002	-100.00	
HIL-Gare Palma IV/4	0.056	0.034	64.71	
SIL / Belgaon	0.015	0.000		
HIL/Kathautia	0.000	0.018	-100.00	
SAIL/Tasra	0.000	0.000		
SPL / Moher & Amlohori Extn.	0.852	1.454	-41.40	
RRVUNL / PEKB	0.792	0.256	209.38	
JPVL / Amelia (North)	0.400	0.184	117.39	
RCCPL/ Sial Ghogri	0.011	0.004	175.00	
TUML / Marki Mangli - I	0.003	0.000		
WBPDC/Barjora	0.000	0.008	-100.00	
TSGENCO/Tadicherla-I	0.182	0.189	-3.70	
OCL/Ardhagram Coal Mine	0.000	0.000		
Ambuja Cement Ltd / GP IV/8	0.000	0.000		
NTPC / Dulanga	0.316	0.096	229.17	
WBPDC/Barjora North	0.010	0.003	233.33	
OCPL/Manoharpur	0.184	0.032	475.00	
NTPC/Talaipalli	0.059	0.056	5.36	
WBPDC/Pachwara North	0.593	0.000		
WBPDC/Gangaramchak-	0.000	0.000		
Talabira II & III	0.090	0.005	1700.00	
CSPGCL/GP III	0.121	0.078	55.13	
DPL/Trans Damodar	0.026			
Total Production by Others	4.87	3.66	33.06	

Table 1.1 (B): Details of Coal Despatch By "Others"

Figures in MT

Name of Coal Block/Company	Despatch during the month		
	FY 22	FY 21	Growth(%) M-o-M
JKML	0.001	0.001	0.00
DVC	0.000	0.000	
IISCOCJ	0.005	0.010	-50.00
IISCOR	0.007	0.003	133.33
JSMDCL	0.001	0.008	-87.50
TATA	0.379	0.510	-25.69
NTPC/Pakri Barwadih	0.794	0.748	6.15
CESC / Sarshatali	0.133	0.158	-15.82
GMR-Talabira -I	0.000	0.000	
HIL-Gare Palma IV/5	0.000	0.000	
BALCO / Chotia	0.000	0.000	
BALCO / Chotia-II	0.000	0.184	-100.00
HIL-Gare Palma IV/4	0.033	0.046	-28.26
SIL / Belgaon	0.011	0.000	
HIL/Kathautia	0.000	0.021	-100.00
SAIL/Tasra	0.000	0.000	
SPL / Moher & Amlochori Extn.	1.321	1.351	-2.22
RRVUNL / PEKB	0.792	0.256	209.38
JPVL / Amelia (North)	0.313	0.104	200.96
RCCPL/ Sial Ghogri	0.011	0.005	120.00
TUML / Marki Mangli - I	0.002	0.000	
WBPDC/Barjora	0.062	0.004	1450.00
TSGENCO/Tadicherla-I	0.178	0.188	-5.32
OCL/Ardhagram Coal Mine	0.000	0.000	
Ambuja Cement Ltd / GP IV/8	0.000	0.002	-100.00
NTPC / Dulanga	0.316	0.317	-0.32
WBPDC/Barjora North	0.103	0.046	123.91
OCPL/Manoharpur	0.142	0.084	69.05
NTPC/Talaipalli	0.121	0.000	
WBPDC/Pachwara North	0.567	0.017	3235.29
WBPDC/Gangaramchak-	0.144	0.146	-1.37
Talabira II & III	0.248	0.000	
CSPGCL/GP III	0.213		
DPL/Trans Damodar	0.043		
Total Despatch by Others	5.94	3.97	49.62

E1: Despatch of Coal By CIL

Sectors	Coal Despatch During April		
	FY 22	FY 21	Growth (%) M-o-M
Power	42.48	31.95	32.96
CPP	3.72	3.87	-3.88
Steel	0.15	0.16	-6.25
Cement	0.28	0.09	214.61
Sponge Iron	0.65	0.46	41.30
Others	6.82	2.48	174.89
Total	54.1	39.01	38.68

E2: Despatch of Coal By SCCL

Sectors	Coal Despatch During April		
	FY 22	FY 21	Growth (%) M-o-M
Power	4.48	2.86	57
CPP	0.35	0.01	2569
Steel			
Cement	0.21	0.01	2513
Sponge Iron	0.01	0.00	341
Others	0.39	0.16	152
Total	5.44	3.04	79.11

E3: Coal Despatch to Different Sectors by Captive and Others

Sectors	Coal Despatch During April		
	FY 22	FY 21	Growth (%) M-o-M
Power	5.523	3.329	65.91
CPP		0.000	
Steel	0.404	0.636	-36.48
Cement	0.011	0.006	83.33
Sponge Iron		0.000	
Others	0.002	0	
Total	5.940	3.97	49.58

Analysis of Big Mines of CIL, SCCL & Others

Table 2.1: Production of Big Mines of CIL

All Figures in MT

Subsidiary	Description	Production During Apr		
		FY 22	FY 21	Growth (%) M-o-M
ECL	Big Mines	1.430	1.806	-20.82
	Other Mines	0.26	0.55	-52.47
	Big Plus Mines	1.69	2.35	-28.18
	Rest of Mines	1.25	1.59	-21.24
	Total ECL	2.94	3.94	-25.38
BCCL	Big Mines	0.24	0.21	17.48
	Other Mines	1.08	0.91	18.16
	Big Plus Mines	1.32	1.12	18.04
	Rest of Mines	0.64	0.58	10.00
	Total BCCL	1.96	1.70	15.29
CCL	Big Mines	3.38	0.95	254.62
	Other Mines	0.63	0.55	14.57
	Big Plus Mines	4.01	1.50	166.82
	Rest of Mines	0.84	0.76	10.01
	Total CCL	4.84	2.26	114.16
NCL	Big Mines	8.47	8.43	0.45
	Other Mines	0.08	0.30	-71.91
	Big Plus Mines	8.55	8.73	-2.03
	Rest of Mines	0.01	0.00	175.00
	Total NCL	8.56	8.73	-1.95
WCL	Big Mines	0.42	0.13	214.39
	Other Mines	1.92	2.06	-7.03
	Big Plus Mines	2.33	2.19	6.29
	Rest of Mines	1.31	1.26	4.14
	Total WCL	3.64	3.45	5.51
SECL	Big Mines	6.81	7.28	-6.40
	Other Mines	1.49	1.02	46.08
	Big Plus Mines	8.30	8.30	0.05
	Rest of Mines	1.01	1.00	0.60
	Total SECL	9.31	9.30	0.11
MCL	Big Mines	10.58	11.41	-7.31
	Other Mines	0.06	0.12	-48.28
	Big Plus Mines	10.64	11.53	-7.72
	Rest of Mines	0.00	0.00	
	Total MCL	10.64	11.53	-7.72
CIL	Big Mines	31.32	30.21	3.66
	Other Mines	5.52	5.51	0.24
	Big Plus Mines	36.84	35.72	3.13
	Rest of Mines	5.05	4.66	8.41
	Total CIL	41.89	40.38	3.74
SCCL	Big Mines	1.91	1.44	32.30
	Other Mines	1.13	0.79	42.86
	Big Plus Mines	3.04	2.23	36.04
	Rest of Mines	1.82	0.77	137.74
	Total SCCL	4.86	3.00	62.00

Subsidiary	Description	Production During Apr		
		FY 22	FY 21	Growth (%) M-o-M
Captive & Others	Big Mines	4.46	3.51	27.14
	Other Mines	0.41	0.15	172.48
	Total Others	4.87	3.66	33.06
All India	Big Mines	44.34	41.47	6.94
	Other Mines	7.28	5.57	30.56
	All Mines	51.62	47.04	9.74

Details of Subsidiary/Company-wise Production Status is given in subsequent Tables

Note:- **Big Mines** means top 35 mines
 Others Mines means top 75 mines excluding top 35 mines
 Big plus mines means top 75 mines including top 35 mines
 Rest of Mines means other than big plus mines

Table 2.1.1 (A) : Departmental Coal Production ECL

All Figures in MT

Mine	Type	Production during Apr		
		FY 22	FY 21	Growth (%) M-o-M
Rajmahal	Big	0.190	0	
Sonepur Bazari	Big	0.17	0.226	-24.78
Jhajhra UG	Others	0.21	0.451	-53.44
Chitra East	Others	0.05	0.096	-47.92
Total Big Mines		0.360	0.226	59.29
Total Others		0.260	0.547	-52.47
Total Big Plus Mines		0.620	0.773	-19.79
Total Rest of Mines		0.690	0.717	-3.77
Total ECL		1.310	1.490	-12.08

Table 2.1.1 (B): Contractual Coal Production ECL

Mine	Type	Production during Apr		
		FY 22	FY 21	Growth (%) M-o-M
Rajmahal	Big	0.5900	1.24	-52.42
Sonepur Bazari	Big	0.4800	0.34	41.18
Jhajhra UG	Others	0	0	
Chitra East	Others	0	0	
Total Big Mines		1.070	1.580	-32.28
Total Others		0.000	0.000	
Total Big Plus Mines		1.070	1.580	-32.28
Total Rest of Mines		0.570	0.340	67.65
Total ECL		1.640	1.920	-14.58

Table 2.1.1 (C) : Total Coal Production ECL

Mine	Type	Production during Apr		
		FY 22	FY 21	Growth (%) M-o-M
Rajmahal	Big	0.780	1.240	-37.10
Sonepur Bazari	Big	0.650	0.566	14.84
Jhajhra UG	Others	0.210	0.451	-53.44
Chitra East	Others	0.050	0.096	-47.92
Total Big Mines		1.430	1.806	-20.82
Total Others		0.260	0.547	-52.47
Total Big Plus Mines		1.690	2.353	-28.18
Total Rest of Mines		1.250	1.587	-21.24
Total ECL		2.940	3.940	-25.38

Table 2.1.2 (A): Departmental Coal Production BCCL

All Figures in MT

Mine	Type	Production during Apr		
		FY 22	FY 21	Growth (%) M-o-M
NT ST Je	Others	0.017	0.01	70.00
AKWMC	Big	0.037	0.097	-61.86
Phularitand	Others	0.095	0.004	2275.00
S Bansjora	Others	0	0	
NGKAC	Others	0	0	
ROCP	Others	0	0	
KOCP	Others	0.059	0.047	25.53
ABOCP	Others	0.091	0.11	-17.27
B Dahibari	Others	0.035	0.053	-33.96
Total Big Mines		0.037	0.097	-61.86
Total Others		0.297	0.224	32.59
Total Big Plus Mines		0.334	0.321	4.05
Total Rest of Mines		0.136	0.239	-43.10
Total BCCL		0.470	0.560	-16.07

Table 2.1.2 (B) Contractual Coal Production BCCL

Mine	Type	Production during Apr		
		FY 22	FY 21	Growth (%) M-o-M
NT ST Je	Others	0.287	0.155	85.16
AKWMC	Big	0.205	0.109	88.07
Phularitand	Others		0.153	-100.00
S Bansjora	Others	0.017	0.102	-83.33
NGKAC	Others	0.059	0.077	-23.38
ROCP	Others	0.199	0.053	275.47
KOCP	Others	0.102	0.074	37.84
ABOCP	Others	0.084	0.076	10.53
B Dahibari	Others	0.035	0	
Total Big Mines		0.205	0.109	88.07
Total Others		0.783	0.690	13.48
Total Big Plus Mines		0.988	0.799	23.65
Total Rest of Mines		0.502	0.341	47.21
Total BCCL		1.490	1.140	30.70

Table 2.1.2 (C)Total Coal Production BCCL

Mine	Type	Production during Apr		
		FY 22	FY 21	Growth (%) M-o-M
NT ST Je	Others	0.304	0.165	84.24
AKWMC	Big	0.242	0.206	17.48
Phularitand	Others	0.095	0.157	-39.49
S Bansjora	Others	0.017	0.102	-83.33
NGKAC	Others	0.059	0.077	-23.38
ROCP	Others	0.199	0.053	275.47
KOCP	Others	0.161	0.121	33.06
ABOCP	Others	0.175	0.186	-5.91
B Dahibari	Others	0.070	0.053	32.08
Total Big Mines		0.242	0.206	17.48
Total Others		1.080	0.914	18.16
Total Big Plus Mines		1.322	1.120	18.04
Total Rest of Mines		0.638	0.580	10.00
Total BCCL		1.960	1.700	15.29

Table 2.1.3 (A): Departmental Coal Production CCL

All Figures in MT

Mine	Type	Production during Apr		
		FY 22	FY 21	Growth (%) M-o-M
Ashoka	Big	0.025	0.02	25.00
Piparwar	Big	0	0.012	-100.00
Amarpali	Big	0	0	
AKK	Big	0.03	0.002	1400.00
Govindpur Ph II	Others	0.041	0.001	4000.00
Rohini	Others	0.026	0.001	2500.00
Purnadih	Others	0.02	0.082	-75.61
Magadh	Big	0	0	
Tapin North	Others	0.037	0.037	0.00
Birsa Project	Others	0.045	0.008	462.50
Karo	Big	0	0	
Topa OC	Others	0.048	0.055	-12.73
Total Big Mines		0.055	0.034	61.76
Total Others		0.217	0.184	17.93
Total Big Plus Mines		0.272	0.218	24.77
Total Rest of Mines		0.518	0.442	17.19
Total CCL		0.790	0.660	19.70

Table 2.1.3 (B) Contractual Coal Production CCL

Mine	Type	Production during Apr		
		FY 22	FY 21	Growth (%) M-o-M
Ashoka	Big	0.877	0.353	148%
Piparwar	Big	0	0.237	-100%
Amarpali	Big	1.314	0.047	2696%
AKK	Big	0.126	0.142	-11%
Govindpur Ph II	Others	0.109	0.119	-8%
Rohini	Others	0.023	0.124	-81%
Purnadih	Others	0	0	
Magadh	Big	0.604	0.069	775%
Tapin North	Others	0.079	0	
Birsa Project	Others	0.201	0.122	65%
Karo	Big	0.4	0.07	471%
Topa OC	Others	0	0	
Total Big Mines		3.321	0.918	262%
Total Others		0.412	0.365	13%
Total Big Plus Mines		3.733	1.283	191%
Total Rest of Mines		0.317	0.337	-6%
Total CCL		4.05	1.62	150%

Table 2.1.3 (C) :Total Coal Production CCL

Mine	Type	Production during Apr		
		FY 22	FY 21	Growth (%) M-o-M
Ashoka	Big	0.902	0.373	142%
Piparwar	Big	0	0.249	-100%
Amarpali	Big	1.314	0.047	2696%
AKK	Big	0.156	0.144	8%
Govindpur Ph II	Others	0.15	0.120	25%
Rohini	Others	0.049	0.125	-61%
Purnadih	Others	0.02	0.082	-76%
Magadh	Big	0.604	0.069	775%
Tapin North	Others	0.116	0.037	214%
Birsa Project	Others	0.246	0.130	89%
Karo	Big	0.4	0.070	471%
Topa OC	Others	0.048	0.055	-13%
Total Big Mines		3.376	0.952	255%
Total Others		0.629	0.549	15%
Total Big Plus Mines		4.005	1.501	167%
Total Rest of Mines		0.835	0.759	10%
Total CCL		4.840	2.260	114%

Table 2.1.4 (A): Departmental Coal Production NCL

Mine	Type	Production during Apr		
		FY 22	FY 21	Growth (%) M-o-M
Nigahi	Big	1.451	1.688	-14.04
Jayant	Big	1.607	1.696	-5.25
Dudhichua	Big	1.588	1.596	-0.50
Amlohri	Big	1.035	0.716	44.55
Khadia	Big	1.022	0.895	14.19
Bina	Big	0.678	0.668	1.50
Krishnashila	Big	0.601	0.6	0.17
Block B	Big	0.483	0.568	-14.96
Jingurda	Others	0.148	0.142	4.23
Kakari	Others	0.146	0.157	-7.01
Total Big Mines		8.465	8.427	0.45
Total Others		0.094	0.299	-68.56
Total Big Plus Mines		8.56	8.726	-1.91
Total Rest of Mines		0.00	0.00	
Total NCL		8.56	8.73	-1.95

Table 2.1.4 (B): Total Coal Production NCL

Mine	Type	Production during Apr		
		FY 22	FY 21	Growth (%) M-o-M
Nigahi	Big	1.451	1.688	-14.04
Jayant	Big	1.607	1.696	-5.25
Dudhichua	Big	1.588	1.596	-0.50
Amlohri	Big	1.035	0.716	44.55
Khadia	Big	1.022	0.895	14.19
Bina	Big	0.678	0.668	1.50
Krishnashila	Big	0.601	0.600	0.17
Block B	Big	0.483	0.568	-14.96
Jingurda	Others	0.148	0.142	4.23
Kakari	Others	0.146	0.157	-7.01
Total Big Mines		8.465	8.427	0.45
Total Others		0.094	0.299	-68.56
Total Big Plus Mines		8.56	8.73	-1.91
Total Rest of Mines		0.00	0.00	
Total NCL		8.56	8.73	-1.95

Table 2.1.5 (A): Departmental Coal Production WCL

All Figures in MT

Mine	Type	Production during Apr		
		FY 22	FY 21	Growth (%) M-o-M
Durgapur -(Sec.-V)	Others	0.038	0.155	-75.48
Sasti	Others	0.037	0.12	-69.17
NM-Sector-I & II (A)	Others	0.023	0.061	-62.30
Niljai Deep	Others	0.136	0.328	-58.54
Mungoli	Others	0.255	0.314	-18.79
Penganga	Big	0.286	0.052	450.00
Ukni	Others	0.086	0.075	14.67
Gondegaon	Others	0.244	0.182	34.07
Umrer	Others	0.11	0.053	107.55
Makardhokra-I	Others	0	0	
Gokul	Others	0	0	
MKD-III	Others	0	0	
Total Big Mines		0.286	0.052	450.00
Total Others		0.929	1.288	-27.87
Total Big Plus Mines		1.215	1.340	-9.33
Total Rest of Mines		0.695	0.860	-19.19
Total WCL		1.910	2.200	-13.18

Table 2.1.5 (B) Contractual Coal Production WCL

Mine	Type	Production during Apr		
		FY 22	FY 21	Growth (%) M-o-M
Durgapur -(Sec.-V)	Others	0	0	
Sasti	Others	0	0	
NM-Sector-I & II (A)	Others	0	0	
Niljai Deep	Others	0	0	
Mungoli	Others	0	0	
Penganga	Big	0.129	0.08	61.25
Ukni	Others	0	0	
Gondegaon	Others	0	0.122	-100.00
Umrer	Others	0.091	0.162	-43.83
Makardhokra-I	Others	0.497	0.229	117.03
Gokul	Others	0.127	0.167	-23.95
MKD-III	Others	0.273	0.094	190.43
Total Big Mines		0.129	0.080	61.25
Total Others		0.988	0.774	27.65
Total Big Plus Mines		1.117	0.854	30.80
Total Rest of Mines		0.613	0.396	54.80
Total WCL		1.730	1.250	38.40

Table 2.1.5 (C) :Total Coal Production WCL

Mine	Type	Production during Apr		
		FY 22	FY 21	Growth (%) M-o-M
Durgapur -(Sec.-V)	Others	0.038	0.155	-75.48
Sasti	Others	0.037	0.12	-69.17
NM-Sector-I & II (A)	Others	0.023	0.061	-62.30
Niljai Deep	Others	0.136	0.328	-58.54
Mungoli	Others	0.255	0.314	-18.79
Penganga	Big	0.415	0.132	214.39
Ukni	Others	0.086	0.075	14.67
Gondegaon	Others	0.244	0.304	-19.74
Umrer	Others	0.201	0.215	-6.51
Makardhokra-I	Others	0.497	0.229	117.03
Gokul	Others	0.127	0.167	-23.95
MKD-III	Others	0.273	0.094	190.43
Total Big Mines		0.415	0.132	214.39
Total Others		1.917	2.062	-7.03
Total Big Plus Mines		2.332	2.194	6.29
Total Rest of Mines		1.308	1.256	4.14
Total WCL		3.640	3.450	5.51

Table 2.1.6 (A): Departmental Coal Production SECL

All Figures in MT

Mine	Type	Production during Apr		
		FY 22	FY 21	Growth (%) M-o-M
Gevra	Big	0.36	0.431	-16.47
Dipka	Big	0.02	0.053	-62.26
Kushmunda	Big	0.69	0.038	1715.79
Chhal	Others	0	0	
Manikpur	Big	0.02	0.04	-50.00
Baroud	Others	0	0	
GP IV/2-3	Others	0	0	
Jampali	Others	0	0	
Dhanpuri	Others	0	0.005	-100.00
Mahan II	Others	0	0	
Amadand	Others	0.01	0.019	-47.37
Chirimiri	Others	0.08	0.039	105.13
Churcha UG	Others	0.13	0.131	-0.76
GP IV/1	Others	0	0	
Total Big Mines		1.090	0.562	93.95
Total Others		0.220	0.194	13.40
Total Big Plus Mines		1.310	0.756	73.28
Total Rest of Mines		0.950	0.904	5.09
Total SECL		2.260	1.660	36.14

Table 2.1.6 (B): Contractual Coal Production SECL

Mine	Type	Production during Apr		
		FY 22	FY 21	Growth (%) M-o-M
Gevra	Big	2.26	2.686	-15.86
Dipka	Big	1.86	1.757	5.86
Kushmunda	Big	1.21	1.839	-34.20
Chhal	Others	0.13	0.076	71.05
Manikpur	Big	0.39	0.432	-9.72
Baroud	Others	0.3	0.155	93.55
GP IV/2-3	Others	0.21	0.195	7.69
Jampali	Others	0.15	0.087	72.41
Dhanpuri	Others	0.26	0.057	356.14
Mahan II	Others	0.08	0.176	-54.55
Amadand	Others	0.12	0.046	160.87
Chirimiri	Others	0.02	0.034	-41.18
Churcha UG	Others	0	0	
GP IV/1	Others	0	0	
Total Big Mines		5.720	6.714	-14.80
Total Others		1.270	0.826	53.75
Total Big Plus Mines		6.990	7.540	-7.29
Total Rest of Mines		0.060	0.100	-40.00
Total SECL		7.050	7.640	-7.72

Table 2.1.6 (C): Total Coal Production SECL

Mine	Type	Production during Apr		
		FY 22	FY 21	Growth (%) M-o-M
Gevra	Big	2.62	3.117	-15.94
Dipka	Big	1.88	1.81	3.87
Kushmunda	Big	1.9	1.877	1.23
Chhal	Others	0.13	0.076	71.05
Manikpur	Big	0.41	0.472	-13.14
Baroud	Others	0.3	0.155	93.55
GP IV/2-3	Others	0.21	0.195	7.69
Jampali	Others	0.15	0.087	72.41
Dhanpuri	Others	0.26	0.062	319.35
Mahan II	Others	0.08	0.176	-54.55
Amadand	Others	0.13	0.065	100.00
Chirimiri	Others	0.1	0.073	36.99
Churcha UG	Others	0.13	0.131	-0.76
GP IV/1	Others	0	0	
Total Big Mines		6.81	7.276	-6.40
Total Others		1.49	1.02	46.08
Total Big Plus Mines		8.300	8.296	0.05
Total Rest of Mines		1.010	1.004	0.60
Total SECL		9.310	9.300	0.11

Table 2.1.7 (A): Departmental Coal Production MCL

All Figures in MT

Mine	Type	Production during Apr		
		FY 22	FY 21	Growth (%) M-o-M
Bhubaneswari	Big	0.00	0.00	
Lakhanpur	Big	0.19	0.26	-25.49
Bharatpur	Big	0.01	0.00	
Lingaraj	Big	0.38	0.61	-37.40
Samaleswari	Big	0.28	0.19	44.33
Kulda	Big	0.12	0.15	-18.92
Kaniha	Big	0.00	0.00	
Hingula	Big	0.33	0.35	-4.35
Ananta	Big	0.21	0.04	377.27
Jagannath	Big	0.00	0.00	
Belpahar	Big	0.02	0.08	-73.68
Lajkura	Big	0.12	0.00	
Balram	Big	0.14	0.42	-66.35
Basundhara (W)	Others	0.06	0.12	-48.28
Garjanbahal	Big	0.32	0.32	0.31
Total Big Mines		2.120	2.404	-11.81
Total Others		0.060	0.116	-48.28
Total Big Plus Mines		2.180	2.520	-13.49
Total Rest of Mines		0.000	0.000	
Total MCL		2.18	2.52	-13.49

Table 2.1.7 (B): Contractual Coal Production MCL

Mine	Type	Production during Apr		
		FY 22	FY 21	Growth (%) M-o-M
Bhubaneswari	Big	2.23	2.95	-24.38
Lakhanpur	Big	1.57	1.67	-6.04
Bharatpur	Big	0.39	0.28	38.30
Lingaraj	Big	0.40	0.46	-13.61
Samaleswari	Big	0.00	0.01	-100.00
Kulda	Big	1.21	1.03	17.25
Kaniha	Big	0.44	0.83	-46.92
Hingula	Big	0.04	0.09	-56.52
Ananta	Big	0.58	0.59	-0.85
Jagannath	Big	0.28	0.37	-23.71
Belpahar	Big	0.64	0.40	61.62
Lajkura	Big	0.34	0.08	309.64
Balram	Big	0.00	0.00	
Basundhara (W)	Others	0.00	0.00	
Garjanbahal	Big	0.28	0.25	12.00
Total Big Mines		8.460	9.020	-6.21
Total Others		0.000	0.000	
Total Big Plus Mines		8.460	9.020	-6.21
Total Rest of Mines		0.000	0.000	
Total MCL		8.46	9.02	-6.21

Table 2.1.7 (C): Total Coal Production MCL

Mine	Type	Production during Apr		
		FY 22	FY 21	Growth (%) M-o-M
Bhubaneswari	Big	2.230	2.949	-24.38
Lakhanpur	Big	1.760	1.926	-8.62
Bharatpur	Big	0.400	0.282	41.84
Lingaraj	Big	0.780	1.070	-27.10
Samaleswari	Big	0.280	0.208	34.62
Kulda	Big	1.330	1.180	12.71
Kaniha	Big	0.440	0.829	-46.92
Hingula	Big	0.370	0.437	-15.33
Ananta	Big	0.790	0.629	25.60
Jagannath	Big	0.280	0.367	-23.71
Belpahar	Big	0.660	0.472	39.83
Lajkura	Big	0.460	0.083	454.22
Balram	Big	0.140	0.416	-66.35
Basundhara (W)	Others	0.060	0.116	-48.28
Garjanbahal	Big	0.600	0.569	5.45
Total Big Mines		10.580	11.414	-7.31
Total Others		0.060	0.116	-48.28
Total Big Plus Mines		10.640	11.530	-7.72
Total Rest of Mines		0.000	0.000	
Total MCL		10.64	11.53	-7.72

Table 2.1.8: Coal Production SCCL

All Figures in MT

Mine	Type	Production during Apr		
		FY 22	FY 21	Growth (%) M-o-M
PKOC	Big	0.551	0.371	48.77
RG OC III Extn.	Big	0.623	0.595	4.58
JVR OCII	Big	0.524	0.160	226.71
Ramagundam OCI Exp. Ph II	Big	0.211	0.316	-33.37
Gouthamkhani OC	Others	0.314	0.226	39.01
JVR OCI Exp.	Others	0.000	0.000	
Koyagudem OC II	Others	0.247	0.186	32.82
Jawaharkhani 5 OC	Others	0.206	0.113	82.00
Srirampur OC II	Others	0.131	0.159	-17.66
Khairagura OC	Others	0.233	0.108	116.37
Total Big Mines		1.909	1.443	32.30
Total Other Mines		1.131	0.792	42.86
Total Big Plus Mines		3.040	2.234	36.04
Rest of Mines		1.820	0.766	137.74
Total SCCL		4.860	3.000	62.00

Table 2.1.9: Coal Production Captive & Others

All Figures in MT

Block	Type	Production during Apr		
		FY 22	FY 21	Growth (%) M-o-M
Moher & Amlohori Extn.	Big	0.852	1.454	-41.40
Parsa East & Kanta Basan	Big	0.792	0.256	209.38
Pakri Barwadih	Big	0.606	0.627	-3.35
Tata	Big	0.368	0.505	-27.13
Amelia (North)	Big	0.400	0.184	117.39
Sarshatali	Big	0.171	0.168	1.79
Tadicherla-I	Big	0.182	0.189	-3.70
Dulanga	Big	0.316	0.096	229.17
Manoharpur	Big	0.184	0.032	475.00
Pachwara North	Big	0.593	0.000	
Total Big Mines		4.464	3.511	27.14
Rest of Mines		0.406	0.149	172.48
Overall Captive & Othres		4.87	3.66	33.06

Table 2.2: OBR of Big Mines of CIL

All Figures in MM3

Subsidiary	Description	OBR during Apr		
		FY 22	FY 21	Growth(%) M-o-M
ECL	Big Mines	1.433	9.089	-84.23
	Other Mines	0.181	0.286	-36.78
	Big Plus Mines	1.614	9.375	-82.79
	Rest of Mines	9.916	3.615	174.31
	Total ECL	11.530	12.990	-11.24
BCCL	Big Mines	0.000	0.000	
	Other Mines	3.515	3.878	-9.36
	Big Plus Mines	3.515	3.878	-9.36
	Rest of Mines	5.575	4.302	29.59
	Total BCCL	9.090	8.180	11.12
CCL	Big Mines	5.828	4.405	32.30
	Other Mines	1.621	1.663	-2.53
	Big Plus Mines	7.449	6.068	22.76
	Rest of Mines	2.071	2.662	-22.20
	Total CCL	9.520	8.730	9.05
NCL	Big Mines	26.005	27.809	-6.49
	Other Mines	0.505	1.241	-59.31
	Big Plus Mines	26.510	29.050	-8.74
	Rest of Mines	0.000	0.000	
	Total NCL	26.510	29.050	-8.74
WCL	Big Mines	1.382	1.082	27.73
	Other Mines	13.895	14.965	-7.15
	Big Plus Mines	15.277	16.047	-4.80
	Rest of Mines	10.103	6.993	44.47
	Total WCL	25.380	23.040	10.16
SECL	Big Mines	10.900	10.225	6.60
	Other Mines	3.282	3.387	-3.10
	Big Plus Mines	14.182	13.612	4.19
	Rest of Mines	3.728	2.028	83.83
	Total SECL	17.910	15.640	14.51
MCL	Big Mines	15.890	14.536	9.31
	Other Mines	0.150	0.024	525.00
	Big Plus Mines	16.040	14.560	10.16
	Rest of Mines	0.000	0.000	
	Total MCL	16.040	14.560	10.16
CIL	Big Mines	61.438	67.146	-8.50
	Other Mines	23.149	25.444	-9.02
	Big Plus Mines	84.587	92.590	-8.64
	Rest of Mines	31.393	19.600	60.17
	Total CIL	115.980	112.190	3.38
	Big Mines	13.178	10.669	23.52
	Other Mines	6.947	5.078	36.81

Subsidiary	Description	OBR during Apr		
		FY 22	FY 21	Growth(%) M-o-M
SCCL	Big Plus Mines	20.125	15.746	27.81
	Rest of Mines	14.065	11.474	22.59
	Total SCCL	34.190	27.220	25.61
All India	Big Mines	74.616	77.815	-4.11
	Other Mines	30.096	30.522	-1.40
	Big Plus Mines	104.712	108.336	-3.35
	Rest of Mines	45.458	31.074	46.29
	Total OBR	150.17	139.41	7.72

Details of Subsidiary-wise OBR Status is given in subsequent Tables

Note:-

- Big Mines means top 35 mines**
- Others Mines means top 75 mines excluding top 35 mines**
- Big plus mines means top 75 mines including top 35 mines**
- Rest of Mines means other than big plus mines**

Table 2.2.1 (A) Departmental OBR ECL

All Figurds in MM3

Mine	Type	OBR during Apr		
		FY 22	FY 21	Growth(%) M-o-M
Rajmahal	Big	0.481	0.493	-2.42
Sonepur Bazari	Big	0.771	0.886	-12.98
Chitra East	Others	0.181	0.151	19.74
Big Mines		1.252	1.379	-9.20
Other Mines		0.181	0.151	19.74
Big Plus Mines		1.433	1.530	-6.35
Rest of Mines		1.047	0.850	23.19
Total ECL		2.48	2.38	4.20

Table 2.2.1 (B) Contractual OBR ECL

Mine	Type	OBR during Apr		
		FY 22	FY 21	Growth(%) M-o-M
Rajmahal	Big	0.667	2.234	-70.16
Sonepur Bazari	Big	5.595	5.476	2.17
Chitra East	Others	0.000	0.135	-100.00
Big Mines		0.181	7.710	-97.65
Other Mines		0.000	0.135	-100.00
Big Plus Mines		0.181	7.845	-97.70
Rest of Mines		8.869	2.765	220.77
Total ECL		9.050	10.610	-14.70

Table 2.2.1 (C) Total OBR ECL

Mine	Type	OBR during Apr		
		FY 22	FY 21	Growth(%) M-o-M
Rajmahal	Big	1.148	2.727	-57.91
Sonepur Bazari	Big	6.366	6.362	0.06
Chitra East	Others	0.181	0.286	-36.78
Big Mines		1.433	9.089	-84.23
Other Mines		0.181	0.286	-36.78
Big Plus Mines		1.614	9.375	-82.79
Rest of Mines		9.916	3.615	174.31
Total ECL		11.53	12.99	-11.24

Table 2.2.2 (A) Departmental OBR BCCL

All Figurds in MM3

Mine	Type	OBR during Apr		
		FY 22	FY 21	Growth(%) M-o-M
NT ST Je	Others	0.173	0.137	26.28
AKWMC	Big	0.259	0.275	-5.82
Phularitand	Others	0.174	0	
S Bansjora	Others	0	0	
NGKAC	Others	0	0	
ROCP	Others	0	0	
KOCP	Others	0.311	0.181	71.82
ABOCP	Others	0.2	0.253	-20.95
B Dahibari	Others	0.14	0.114	22.81
Big Mines		0.000	0.000	
Other Mines		0.998	0.685	45.69
Big Plus Mines		0.998	0.685	45.69
Rest of Mines		0.652	0.875	-25.49
Total BCCL		1.650	1.560	5.77

Table 2.2.2 (B) Contractual OBR BCCL

Mine	Type	OBR during Apr		
		FY 22	FY 21	Growth(%) M-o-M
NT ST Je	Others	0.768	0.93	-17.42
AKWMC	Big	0.503	0.385	30.65
Phularitand	Others	0	0.269	-100.00
S Bansjora	Others	0.05	0.264	-81.06
NGKAC	Others	0.396	0.131	202.29
ROCP	Others	0.369	0.704	-47.59
KOCP	Others	0.384	0.442	-13.12
ABOCP	Others	0.47	0.453	3.75
B Dahibari	Others	0.08	0	
Big Mines		0.000	0.000	
Other Mines		2.517	3.193	-21.17
Big Plus Mines		2.517	3.193	-21.17
Rest of Mines		4.913	3.427	43.36
Total BCCL		7.430	6.62	12.24

Table 2.2.2 (C) Total OBR BCCL

Mine	Type	OBR during Apr		
		FY 22	FY 21	Growth(%) M-o-M
NT ST Je	Others	0.941	1.067	-11.81
AKWMC	Big	0.762	0.660	15.45
Phularitand	Others	0.174	0.269	-35.32
S Bansjora	Others	0.050	0.264	-81.06
NGKAC	Others	0.396	0.131	202.29
ROCP	Others	0.369	0.704	-47.59
KOCP	Others	0.695	0.623	11.56
ABOCP	Others	0.670	0.706	-5.10
B Dahibari	Others	0.220	0.114	92.98
Big Mines		0.000	0.000	
Other Mines		3.515	3.878	-9.36
Big Plus Mines		3.515	3.878	-9.36
Rest of Mines		5.575	4.302	29.59
Total BCCL		9.09	8.18	11.12

Table 2.2.3 (A) Departmental OBR CCL

All Figurds in MM3

Mine	Type	OBR during Apr		
		FY 22	FY 21	Growth(%) M-o-M
Ashoka	Big	0.15	0.081	85.19
Piparwar	Big	0	0.183	-100.00
Amarpali	Big	0	0	
AKK	Big	0.163	0.237	-31.22
Govindpur Ph II	Others	0.124	0.143	-13.29
Rohini	Others	0.151	0.161	-6.21
Purnadih	Others	0.143	0.247	-42.11
Magadh	Big	0	0	
Tapin North	Others	0.07	0.184	-61.96
Birsa Project	Others	0.11	0.095	15.79
Karo	Big	0	0	
Topa OC	Others	0	0	
Big Mines		0.313	0.501	-37.52
Other Mines		0.598	0.830	-27.95
Big Plus Mines		0.911	1.331	-31.56
Rest of Mines		1.569	2.179	-27.99
Total CCL		2.480	3.510	-29.34

Table 2.2.3 (B) Contractual OBR CCL

Mine	Type	OBR during Apr		
		FY 22	FY 21	Growth(%) M-o-M
Ashoka	Big	2.135	1.464	45.83
Piparwar	Big	0	0.278	-100.00
Amarpali	Big	1.625	1.684	-3.50
AKK	Big	0.489	0.148	230.41
Govindpur Ph II	Others	0.129	0.163	-20.86
Rohini	Others	0	0.287	-100.00
Purnadih	Others	0	0	
Magadh	Big	1.149	0.305	276.72
Tapin North	Others	0.384	0	
Birsa Project	Others	0.374	0.323	15.79
Karo	Big	0.117	0.025	368.00
Topa OC	Others	0.136	0.225	-39.56
Big Mines		5.515	3.904	41.27
Other Mines		1.023	0.833	22.81
Big Plus Mines		6.538	4.737	38.02
Rest of Mines		0.502	0.483	3.93
Total CCL		7.040	5.220	34.87

Table 2.2.3 (C) Total OBR CCL

Mine	Type	OBR during Apr		
		FY 22	FY 21	Growth(%) M-o-M
Ashoka	Big	2.285	1.545	47.90
Piparwar	Big	0.000	0.461	-100.00
Amarpali	Big	1.625	1.684	-3.50
AKK	Big	0.652	0.385	69.35
Govindpur Ph II	Others	0.253	0.306	-17.32
Rohini	Others	0.151	0.448	-66.29
Purnadih	Others	0.143	0.247	-42.11
Magadh	Big	1.149	0.305	276.72
Tapin North	Others	0.454	0.184	146.74
Birsa Project	Others	0.484	0.418	15.79
Karo	Big	0.117	0.025	368.00
Topa OC	Others	0.136	0.225	-39.56
Big Mines		5.828	4.405	32.30
Other Mines		1.621	1.663	-2.53
Big Plus Mines		7.449	6.068	22.76
Rest of Mines		2.071	2.662	-22.20
Total CCL		9.520	8.730	9.05

Table 2.2. 4 (A) Departmental OBR NCL

All Figurds in MM3

Mine	Type	OBR during Apr		
		FY 22	FY 21	Growth(%) M-o-M
Nigahi	Big	1.661	1.571	5.73
Jayant	Big	0.997	1.311	-23.95
Dudhichua	Big	1.554	1.064	46.05
Amlohri	Big	1.074	1.371	-21.66
Khadia	Big	0.868	0.745	16.51
Bina	Big	0.427	0.5	-14.60
Krishnashila	Big	0.034	0.022	54.55
Block B	Big	0	0	
Jingurda	Others	0.146	0.207	-29.47
Kakari	Others	0.356	0.234	52.14
Big Mines		6.615	6.584	0.47
Other Mines		0.505	0.446	13.23
Big Plus Mines		7.120	7.030	1.28
Rest of Mines		0.000	0.000	
Total NCL		7.120	7.030	1.28

Table 2.2.4 (B) Contractual OBR NCL

Mine	Type	OBR during Apr		
		FY 22	FY 21	Growth(%) M-o-M
Nigahi	Big	4.16	3.874	7.38
Jayant	Big	3.37	2.401	40.36
Dudhichua	Big	2.32	4.220	-45.02
Amlohri	Big	2.38	1.687	41.08
Khadia	Big	2.68	3.896	-31.21
Bina	Big	2.24	2.862	-21.73
Krishnashila	Big	1.14	2.004	-43.11
Block B	Big	1.1	0.281	291.46
Jingurda	Others	0	0.737	-100.00
Kakari	Others	0	0.066	-100.00
Big Mines		19.390	21.225	-8.65
Other Mines		0.000	0.805	-100.00
Big Plus Mines		19.390	22.030	-11.98
Rest of Mines		0.000	0.000	
Total NCL		19.390	22.03	-11.98

Table 2.2.4 (C) Total OBR NCL

Mine	Type	OBR during Apr		
		FY 22	FY 21	Growth(%) M-o-M
Nigahi	Big	5.821	5.445	6.91
Jayant	Big	4.367	3.712	17.65
Dudhichua	Big	3.874	5.284	-26.68
Amlohri	Big	3.454	3.058	12.95
Khadia	Big	3.548	4.641	-23.55
Bina	Big	2.667	3.362	-20.67
Krishnashila	Big	1.174	2.026	-42.05
Block B	Big	1.100	0.281	291.46
Jingurda	Others	0.146	0.944	-84.53
Kakari	Others	0.356	0.300	18.67
Big Mines		26.005	27.809	-6.49
Other Mines		0.505	1.241	-59.31
Big Plus Mines		26.510	29.050	-8.74
Rest of Mines		0.000	0.000	
Total NCL		26.510	29.050	-8.74

Table 2.2.5 (A) Departmental OBR WCL

All Figurds in MM3

Mine	Type	OBR during Apr		
		FY 22	FY 21	Growth(%) M-o-M
Durgapur -(Sec.-V)	Others	0.326	0.253	28.85
Sasti	Others	0.313	0.407	-23.10
NM-Sector-I & II (A)	Others	0.029	0.28	-89.64
Niljai Deep	Others	0.21	0.106	98.11
Mungoli	Others	0.377	0.425	-11.29
Penganga	Big	0.084	0.297	-71.72
Ukni	Others	0.178	0.934	-80.94
Gondegaon	Others	0.236	0.39	-39.49
Umrer	Others	0.325	0.466	-30.26
Makardhokra-I	Others	0	0	
Gokul	Others	0	0	
MKD-III	Others	0	0	
Big Mines		0.084	0.297	-71.72
Other Mines		1.994	3.261	-38.85
Big Plus Mines		2.078	3.558	-41.60
Rest of Mines		1.352	0.772	75.13
Total WCL		3.430	4.330	-20.79

Table 2.2.5 (B) Contractual OBR WCL

Mine	Type	OBR during Apr		
		FY 22	FY 21	Growth(%) M-o-M
Durgapur -(Sec.-V)	Others	0.953	1.02	-6.57
Sasti	Others	0.155	0.755	-79.47
NM-Sector-I & II (A)	Others	2.362	0.386	511.92
Niljai Deep	Others	2.211	2.184	1.24
Mungoli	Others	1.561	1.897	-17.71
Penganga	Big	1.298	0.785	65.35
Ukni	Others	0.939	0.934	0.54
Gondegaon	Others	0.123	0.71	-82.68
Umrer	Others	0	0	
Makardhokra-I	Others	1.632	1.003	62.71
Gokul	Others	0.962	1.517	-36.59
MKD-III	Others	1.003	1.298	-22.73
Big Mines		1.298	0.785	65.35
Other Mines		11.901	11.704	1.68
Big Plus Mines		13.199	12.489	5.69
Rest of Mines		8.751	6.221	40.67
Total WCL		21.950	18.71	17.32

Table 2.2.5 (C) Total OBR WCL

Mine	Type	OBR during Apr		
		FY 22	FY 21	Growth(%) M-o-M
Durgapur -(Sec.-V)	Others	1.279	1.273	0.47
Sasti	Others	0.468	1.162	-59.72
NM-Sector-I & II (A)	Others	2.391	0.666	259.01
Niljai Deep	Others	2.421	2.290	5.72
Mungoli	Others	1.938	2.322	-16.54
Penganga	Big	1.382	1.082	27.73
Ukni	Others	1.117	1.868	-40.20
Gondegaon	Others	0.359	1.100	-67.36
Umrer	Others	0.325	0.466	-30.26
Makardhokra-I	Others	1.632	1.003	62.71
Gokul	Others	0.962	1.517	-36.59
MKD-III	Others	1.003	1.298	-22.73
Big Mines		1.382	1.082	27.73
Other Mines		13.895	14.965	-7.15
Big Plus Mines		15.277	16.047	-4.80
Rest of Mines		10.103	6.993	44.47
Total WCL		25.380	23.04	10.16

Table 2.2.6 (A) Departmental OBR SECL

All Figurds in MM3

Mine	Type	OBR during Apr		
		FY 22	FY 21	Growth(%) M-o-M
Gevra	Big	2.63	2.133	23.30
Dipka	Big	1.09	1.253	-13.01
Kushmunda	Big	1.71	1.678	1.91
Chhal	Others	0	0	
Manikpur	Big	0.11	0.045	0.01
Baroud	Others	0	0	
GP IV/2-3	Others	0	0	
Jampali	Others	0	0	
Dhanpuri	Others	0.27	0.344	-21.51
Mahan II	Others	0	0	
Amadand	Others	0.08	0.135	-40.74
Chirimiri	Others	0.12	0.21	-42.86
GP IV/1	Others	0	0	
Big Mines		5.540	5.109	8.44
Other Mines		0.470	0.689	-31.79
Big Plus Mines		6.010	5.798	3.66
Rest of Mines		0.470	0.242	94.21
Total SECL		6.050	6.040	0.17

Table 2.2.6 (B) Contractual OBR SECL

Mine	Type	OBR during Apr		
		FY 22	FY 21	Growth(%) M-o-M
Gevra	Big	2.07	2.043	1.32
Dipka	Big	0.69	1.127	-38.78
Kushmunda	Big	1.36	0.723	88.11
Chhal	Others	0.65	0.674	-3.56
Manikpur	Big	1.24	1.223	1.39
Baroud	Others	0.56	0.734	-23.71
GP IV/2-3	Others	0.74	0.218	239.45
Jampali	Others	1.08	0.344	213.95
Dhanpuri	Others	0	0	
Mahan II	Others	0.05	0.361	-86.15
Amadand	Others	0.44	0.212	107.55
Chirimiri	Others	0.27	0.155	74.19
GP IV/1	Others	0	0	
Big Mines		5.360	5.116	4.77
Other Mines		2.812	2.698	4.23
Big Plus Mines		8.172	7.814	4.58
Rest of Mines		3.698	1.776	108.22
Total SECL		11.870	9.590	23.77

Table 2.2.6 (C) Total OBR SECL

Mine	Type	OBR during Apr		
		FY 22	FY 21	Growth(%) M-o-M
Gevra	Big	4.700	4.176	12.55
Dipka	Big	1.780	2.380	-25.21
Kushmunda	Big	3.070	2.401	27.86
Chhal	Others	0.650	0.674	-3.56
Manikpur	Big	1.350	1.268	6.47
Baroud	Others	0.560	0.734	-23.71
GP IV/2-3	Others	0.740	0.218	239.45
Jampali	Others	1.080	0.344	213.95
Dhanpuri	Others	0.270	0.344	-21.51
Mahan II	Others	0.050	0.361	-86.15
Amadand	Others	0.520	0.347	49.86
Chirimiri	Others	0.390	0.365	6.85
GP IV/1	Others	0.000	0.000	
Big Mines		10.900	10.225	6.60
Other Mines		3.282	3.387	-3.10
Big Plus Mines		14.182	13.612	4.19
Rest of Mines		3.73	2.028	83.83
Total SECL		17.910	15.64	14.51

Table 2.2.7 (A) Departmental OBR MCL

All Figurds in MM3

Mine	Type	OBR during Apr		
		FY 22	FY 21	Growth(%) M-o-M
Bhubaneswari	Big	0	0	
Lakhanpur	Big	0.38	0.183	107.65
Bharatpur	Big	0.27	0.271	-0.37
Lingaraj	Big	0.15	0.187	-19.79
Samaleswari	Big	0.08	0.046	73.91
Kulda	Big	0	0.02	-100.00
Kaniha	Big	0	0	
Hingula	Big	0.02	0.077	-74.03
Ananta	Big	0.24	0.148	62.16
Jagannath	Big	0.12	0.185	-35.14
Belpahar	Big	0.12	0.036	233.33
Lajkura	Big	0.09	0.109	-17.43
Balram	Big	0.08	0.243	-67.08
Basundhara (W)	Others	0.02	0.024	-16.67
Garjanbahal	Big	0.15	0.171	-12.28
Big Mines		1.700	1.676	1.43
Other Mines		0.020	0.024	-16.67
Big Plus Mines		1.720	1.700	1.18
Rest of Mines		0.000	0.000	
Total MCL		1.720	1.700	1.18

Table 2.2.7 (B) Contractual OBR MCL

Mine	Type	OBR during Apr		
		FY 22	FY 21	Growth(%) M-o-M
Bhubaneswari	Big	1.43	1.925	-25.71
Lakhanpur	Big	1.99	3.853	-48.35
Bharatpur	Big	0.91	0	
Lingaraj	Big	0.66	0.967	-31.75
Samaleswari	Big	0.64	0.735	-12.93
Kulda	Big	1.34	1.507	-11.08
Kaniha	Big	0.71	0.378	87.83
Hingula	Big	1.75	0.262	567.94
Ananta	Big	1.82	0.846	115.13
Jagannath	Big	0.22	0.179	22.91
Belpahar	Big	0.18	0.549	-67.21
Lajkura	Big	0.85	0.468	81.62
Balram	Big	1.08	0.728	48.35
Basundhara (W)	Others	0.03	0	
Garjanbahal	Big	0.67	0.462	45.02
Big Mines		14.250	12.860	10.81
Other Mines		0.070	0.000	
Big Plus Mines		14.320	12.860	11.35
Rest of Mines		0.000	0.000	
Total MCL		14.320	12.860	11.35

Table 2.2.7 (C) Total OBR MCL

Mine	Type	OBR during Apr		
		FY 22	FY 21	Growth(%) M-o-M
Bhubaneswari	Big	1.430	1.925	-25.71
Lakhanpur	Big	2.370	4.036	-41.28
Bharatpur	Big	1.180	0.271	335.42
Lingaraj	Big	0.810	1.154	-29.81
Samaleswari	Big	0.720	0.781	-7.81
Kulda	Big	1.340	1.527	-12.25
Kaniha	Big	0.710	0.378	87.83
Hingula	Big	1.770	0.339	422.12
Ananta	Big	2.060	0.994	107.24
Jagannath	Big	0.340	0.364	-6.59
Belpahar	Big	0.300	0.585	-48.72
Lajkura	Big	0.940	0.577	62.91
Balram	Big	1.160	0.971	19.46
Basundhara (W)	Others	0.050	0.024	108.33
Garjanbahal	Big	0.820	0.633	29.54
Big Mines		15.890	14.536	9.31
Other Mines		0.150	0.024	525.00
Big Plus Mines		16.040	14.560	10.16
Rest of Mines		0.000	0.000	
Total MCL		16.040	14.560	10.16

Table 2.2.8: OBR SCCL

All Figures in MM3

Mine	Type	OBR during Apr		
		FY 22	FY 21	Growth(%) M-o-M
PKOC	Big	4.15	3.51	18.27
RG OC III Extn.	Big	4.69	4.12	13.82
JVR OCII	Big	2.70	1.48	82.10
Ramagundam OCI Exp. Ph II	Big	1.65	1.56	5.39
Gouthamkhani OC	Others	0.13	0.45	-71.70
JVR OCI Exp.	Others	0.00	0.06	-100.00
Koyagudem OC II	Others	1.27	0.75	
Jawaharkhani 5 OC	Others	0.81	0.80	0.75
Srirampur OC II	Others	2.46	2.30	6.93
Khairagura OC	Others	2.28	0.71	221.73
Total Big Mines		13.178	10.669	23.52
Total Other Mines		6.947	5.078	36.81
Total Big Plus Mines		20.125	15.746	27.81
Rest of Mines		14.065	11.474	22.59
Total SCCL		34.19	27.22	25.61

Exploration

Table - 1 : PERFORMANCE REPORT

Performance of CMPDI for the month of April, 2021 and progressive upto April, 2021 (2021-22)

(PROVISIONAL)

ITEM	TARGET 2021-22 (Proposed)	Current Month April, 2021			Achievement in correspond. month of prev. year 2020-21	Growth over correspond. month of 2020-21		Cumulative Achievement upto April, 2021 (2021-22)			Cumulative Achiev. upto correspond. period of prev. year 2019-20	Growth over correspond. period of 2020-21	
		Target	Actual	%age ach.		Abs	%age	Target	Actual	%age ach.		Abs	%age
DRILLING													
1. DRILLING BY CMPDI (DEPARTMENTAL) (in metre)	490000	35800	25836	72%	5564	20272	364%	35800	25836	72%	5564	20272	364%
DRILLING THROUGH OTHER AGENCIES													
2. DRILLING BY STATE GOVT. (in metre)	9000	320	147	46%	0	147	-	320	147	46%	0	147	-
3. OUTSOURCING THROUGH MOU (CIL/Non-CIL Blocks) (in metre)	249000	18920	24287	128%	9171	15117	165%	18920	24287	128%	9171	15117	165%
4. OUTSOURCING THROUGH TENDERING (CIL Blocks) (in metre)	207000	8500	8067	95%	2421	5646	233%	8500	8067	95%	2421	5646	233%
5. OUTSOURCING THROUGH TENDERING (Non-CIL/Captive Blocks) (in metre)	145000	11300	17603	156%	2491	15112	607%	11300	17603	156%	2491	15112	607%
TOTAL OUTSOURCING (in metre)	610000	39040	50104	128%	14082	36022	256%	39040	50104	128%	14082	36022	256%
TOTAL DRILLING (in metre)	1100000	74840	75940	101%	19646	56294	287%	74840	75940	101%	19646	56294	287%

2D/3D SEISMIC SURVEY

(Fig. in nos. Prov.)

ITEM	TARGET 2021-22 (Proposed)	Current Month April, 2021			Cum. Ach. upto April, 2021 (2021-22)		
		Target	Actual	% age Ach.	Target	Actual	% age Ach.
2D/3D Seismic Survey (Line Km)	500	40	30.5	76%	40	30.50	76%

REPORT PREPARATION:

(Fig. in nos. Prov.)

	TARGET 2021-22 (Proposed)	ACTUAL APR.'2021	ACTUAL 2021-22 (till APR.,21)	UNDER PREPA- RATION
1. GEOLOGICAL REPORTS	26	-	-	36
2. OTHER REPORTS (incl. PR, EMP, etc.)	-	14	14	92
Total	-	14	14	128

MANPOWER:

Manpower as on	01.04.2021	01.05.2021	01.03.2021	Reduction from 01.04.2021
	3068	3057	3077	11

Performance of Coal PSUs

Performance of Coal Companies

Apr '2021

Table 4.1: Production Status

(i) Underground Production

All figures in MT

Subs	Production During Apr				Growth(%)
	Target	FY 22	Achievement(%)	FY 21	M-O-M
ECL	0.74	0.66	89.96	0.96	-31.15
BCCL	0.07	0.04	55.56	0.05	-14.89
CCL	0.06	0.04	58.33	0.05	-35.19
NCL					
WCL	0.30	0.25	80.92	0.29	-13.99
SECL	1.10	0.98	88.81	0.98	-0.10
MCL	0.04	0.05	125.00	0.04	12.50
CIL	2.31	2.00	86.44	2.37	-15.72
SCCL	0.73	0.48	65.74	0.08	531.65
Total	3.03	2.47	81.49	2.44	1.20

(iia) Open Cast Production- Departmental

All figures in MT

Subs	Production During Apr				Growth(%)
	Target	FY 22	Achievement(%)	FY 21	M-O-M
ECL	0.56	0.65	116.07	0.52	25.00
BCCL		0.43		0.52	-17.31
CCL	1.20	0.76	63.33	0.60	26.67
NCL	8.76	8.56	97.72	8.73	-1.95
WCL	2.22	1.67	75.23	1.92	-13.02
SECL	0.00	1.28		0.68	88.24
MCL		2.13		2.48	-14.11
CIL	12.74	15.48	121.51	15.45	0.19
SCCL	5.06	3.53	69.71	2.279	54.72
Total	17.80	19.01	106.79	17.73	7.20

(iib) Open Cast Production - Contractual*All figures in MT*

Subs	Production During Apr				Growth(%)
	Target	FY 22	Achievement(%)	FY 21	M-O-M
ECL	2.33	1.64	70.39	1.92	-14.58
BCCL		1.49		1.14	30.70
CCL	3.81	4.05	106.30	1.62	150.00
NCL					
WCL	1.83	1.73	94.54	1.25	38.40
SECL	10.51	7.05	67.08	7.64	-7.72
MCL		8.46		9.02	-6.21
CIL	18.48	24.42	132.14	22.59	8.10
SCCL	0.000	0.854		0.645	32.37
Total	18.48	25.27	136.77	23.24	8.78

(ii) Open Cast Production(iia+iib)*All figures in MT*

Subs	Production During Apr				Growth(%)
	Target	FY 22	Achievement(%)	FY 21	M-O-M
ECL	2.89	2.29	79.24	2.44	-6.15
BCCL	0.00	1.92		1.66	15.66
CCL	5.01	4.81	96.01	2.22	116.67
NCL	8.76	8.56	97.72	8.73	-1.95
WCL	4.05	3.40	83.95	3.17	7.26
SECL	10.51	8.33	79.26	8.32	0.12
MCL	0.00	10.59		11.50	-7.91
CIL	31.22	39.89	127.77	38.05	4.84
SCCL	5.058	4.380	86.60	2.924	49.79
Total	36.28	44.27	122.03	40.97	8.04

(iii) Total Coal Production(i+ii)*All figures in MT*

Subs	Production During Apr				Growth(%)
	Target	FY 22	Achievement(%)	FY 21	M-O-M
ECL	3.63	2.94	81.07	3.39	-13.26
BCCL	2.10	1.96	93.33	1.70	15.50
CCL	5.08	4.84	95.18	2.26	113.56
NCL	8.76	8.56	97.72	8.73	-1.95
WCL	4.35	3.64	83.59	3.45	5.51
SECL	11.60	9.31	80.22	9.30	0.10
MCL	11.64	10.64	91.37	11.53	-7.76
CIL	47.16	41.88	88.79	40.38	3.71
SCCL	5.78	4.86	0.84	3.00	61.90
Total	52.94	46.73	88.27	43.38	7.73

Table 4.1 (A): Coking Coal Production*In MT*

Subs	Production During Apr		Growth (%)
	FY 22	FY 201	M-o-M
BCCL	1.790	1.565	14.377
CCL	1.375	0.836	64.47
SECL	0.018	0.016	12.50
WCL	0.015	0.014	7.14
ECL	0.002	0.001	70.00
Coal India	3.200	2.432	31.57

Table 4.1 (BA) : Washed Coking Coal Production*In MT*

Subs	Production During Apr		Growth (%)
	FY 22	FY 21	M-o-M
BCCL	0.065	0.025	160.00
CCL	0.018	0.042	-57.14
Coal India	0.083	0.067	23.88

Table 4.1 (BB) : Washed Non-Coking Coal Production*In MT*

Subs	Production During Apr		Growth (%)
	FY 22	FY 21	M-o-M
BCCL	0.155	0.063	145.56
CCL	0.359	0.195	84.26
NCL	0.305	0.261	16.86
Coal India	0.819	0.519	57.80
<i>Washed Coal</i>	<i>0.902</i>	<i>0.586</i>	<i>53.92</i>

Table 4.1 (BC) : Production of Middlings*In MT*

Subs	Production During Apr		Growth (%)	M-o-M
	FY 22	FY 21		
BCCL	0.155	0.063		146.03
CCL	0.039	0.072		-45.97
Coal India	0.194	0.135		43.63

Table 4.2: Productivity(OMS) in Te

(i) Underground Mines

Subs	OMS during Apr				Growth(%)
	Target	Actual	Achv. %	Apr'2021	M-O-M
ECL	0.84	0.77	91.11	0.99	-22.17
BCCL	0.33	0.12	36.36	0.12	0.00
CCL	0.65	0.39	60.00	0.53	-26.42
WCL	0.90	0.90	100.00	0.86	4.65
SECL	1.51	1.53	101.32	1.39	10.07
MCL	0.48	0.57	118.75	0.54	5.56
SCCL	1.50	1.09	72.67	0.54	101.85

(ii) Open Cast Mines

Subs	OMS during Apr				Growth(%)
	Target	Actual	Achv. %	Apr'2021	M-O-M
ECL	14.15	12.45	88.02	12.59	-1.10
BCCL	7.79	8.87	113.86	6.50	36.46
CCL	12.29	10.64	86.57	4.91	116.70
NCL	0.00	24.64		24.82	-0.73
WCL	3.60	3.90	108.33	3.34	16.77
SECL	32.42	27.14	83.71	27.38	-0.88
MCL	38.42	35.34	91.98	28.14	25.59
SCCL	19.19	18.30	95.36	11.81	54.95

(iii) Overall OMS

Subs	OMS during Apr				Growth(%)
	Target	Actual	Achv. %	Apr'2021	M-O-M
ECL	3.22	2.82	87.56	2.92	-3.43
BCCL	4.43	3.62	81.72	2.66	36.09
CCL	10.49	8.94	85.22	4.10	118.05
NCL	0.00	24.64		24.82	-0.73
WCL	3.10	3.10	100.00	2.68	15.67
SECL	11.80	9.81	83.14	9.21	6.51
MCL	30.57	28.14	92.05	23.90	17.74
SCCL	7.24	6.39	88.26	7.10	-10.00

Table 4.3: OBR

(i) Departmental OBR

All figures in MM3

Subs	OBR During Apr				Growth(%)
	Target	FY 22	Achievement(%)	FY 21	M-O-M
ECL	2.54	2.48	97.64	2.38	4.20
BCCL		1.65		1.56	5.77
CCL	2.79	2.48	88.89	3.51	-29.34
NCL	7.07	7.12	100.71	7.03	1.28
WCL	4.36	3.43	78.67	4.33	-20.79
SECL	6.11	6.05	99.02	6.04	0.17
MCL		1.72		1.70	1.18
CIL	22.87	24.93	109.01	26.55	-6.10
SCCL	5.544	5.506	99.31	5.478	0.51
Total	28.41	30.44	107.12	32.03	-4.97

(ii) Contractual OBR

All figures in MM3

Subs	OBR During Apr				Growth(%)
	Target	FY 22	Achievement(%)	FY 21	M-O-M
ECL	11.17	9.05	81.02	10.61	-14.70
BCCL		7.43		6.62	12.24
CCL	6.26	7.04	112.46	5.22	34.87
NCL	26.49	19.39	73.20	22.03	-11.98
WCL	18.88	21.95	116.26	18.71	17.32
SECL	11.91	11.87	99.66	9.59	23.77
MCL		14.32		12.86	11.35
CIL	74.71	91.05	121.87	85.64	6.32
SCCL	31.850	28.683	90.06	21.746	31.90
Total	106.56	119.73	112.36	107.39	11.50

(iii) Total OBR*All figures in MM3*

Subs	OBR During Apr				Growth(%)
	Target	FY 22	Achievement(%)	FY 21	M-O-M
ECL	13.93	11.53	82.78	12.99	-11.24
BCCL	9.84	9.08	92.28	8.18	11.00
CCL	9.05	9.52	105.19	8.73	9.05
NCL	33.57	26.51	78.97	29.06	-8.77
WCL	23.24	25.38	109.21	23.04	10.16
SECL	18.66	17.92	96.03	15.63	14.65
MCL	17.14	16.04	93.58	14.56	10.16
CIL	125.43	115.98	92.47	112.19	3.38
SCCL	37.39	34.19	91.43	27.22	25.58
Total	162.82	150.17	92.23	139.41	15.14

Table 4.4 : Subsidiary-wise HEMM Utilisation

10. It may be observed that Dragline has been under-utilised in BCCL & MCL in the month of Apr 2021

(i) Dragline

Subs	No of Units	CMPDI Norms		Actual Status during Apr 2021 (in %)		Actual Status during Apr 2020 (in %)		Progressive Growth	
		Available	Utilised	Available	Utilised	Available	Utilised	Available	Utilised
ECL	1	85	73	53	48	92	86	-40	-38
BCCL	1	85	73	75	10	50	0	25	10
CCL								0	0
NCL	23	85	73	80	71	82	76	-2	-5
WCL	2	85	73	76	42	87	73	-11	-31
SECL	4	85	73	100	59	75	68	25	-9
MCL	1	85	73	85	1	0	0	85	1
SCCL	1	85	73	67	50	42	22	25	28

ii It may be observed that Shovel has been under-utilised in the month of Apr 2021

(ii) Shovel

Subs	No of Units	CMPDI Norms		Actual Status during Apr 2021 (in %)		Actual Status during Apr 2020 (in %)		Progressive Growth	
		Available	Utilised	Available	Utilised	Available	Utilised	Available	Utilised
ECL	59	80	58	72	50	76	42	3	-5
BCCL	97	80	58	74	42	71	47	2	-1
CCL	95	80	58	79	45	77	46	2	0
NCL	115	80	58	75	44	73	44	1	-5
WCL	144	80	58	80	36	79	41	0	1
SECL	82	80	58	70	42	70	41	3	-3
MCL	65	80	58	77	30	74	33	-3	3
SCCL	74	80	58	82	57	85	54	0	0

(iii) Surface Miner

Subs	No of Units	CMPDI Norms		Actual Status during Apr 2021 (in %)		Actual Status during Apr 2020 (in %)		Progressive Growth	
		Available	Utilised	Available	Utilised	Available	Utilised	Available	Utilised
ECL									
BCCL									
CCL									
NCL	4	NA	NA	95	57	95	59	0	-2
WCL									
SECL									
MCL	22	NA	NA	76	40	89	50	-13	-10
SCCL									

iv It may be observed that Dumper has been under-utilised in the month of Apr 2021

(iv) Dumper

Subs	No of Units	CMPDI Norms		Actual Status during Apr 2021 (in %)		Actual Status during Apr 2020 (in %)		Progressive Growth	
		Available	Utilised	Available	Utilised	Available	Utilised	Available	Utilised
ECL	177	67	50	75	47	75	42	0	5
BCCL	421	67	50	73	31	62	30	11	1
CCL	356	67	50	76	42	73	38	3	4
NCL	545	67	50	77	44	70	50	7	-6
WCL	399	67	50	83	39	77	42	6	-3
SECL	558	67	50	84	33	84	36	0	-3
MCL	226	67	50	78	25	79	25	-1	0
SCCL	497	67	50	85	39	85	36	0	3

v It may be observed that Dozer has been under-utilised in the month of Apr 2021

(v) Dozer

Subs	No of Units	CMPDI Norms		Actual Status during Apr 2021 (in %)		Actual Status during Apr 2020 (in %)		Progressive Growth	
		Available	Utilised	Available	Utilised	Available	Utilised	Available	Utilised
ECL	81	70	45	70	22	74	24	-4	-2
BCCL	101	70	45	73	14	63	26	10	-12
CCL	165	70	45	78	14	81	18	-3	-4
NCL	173	70	45	70	24	63	28	7	-4
WCL	157	70	45	79	24	77	27	2	-3
SECL	151	70	45	68	33	70	33	-2	0
MCL	139	70	45	74	21	70	24	4	-3
SCCL	110	70	45	77	26	76	28	1	-2

vi It may be observed that Drill has been under-utilised in the month of Apr 2021

(vi) Drill

Subs	No of Units	CMPDI Norms		Actual Status during Apr 2021 (in %)		Actual Status during Apr 2020 (in %)		Progressive Growth	
		Available	Utilised	Available	Utilised	Available	Utilised	Available	Utilised
ECL	50	78	40	84	19	79	21	4	-2
BCCL	79	78	40	66	22	60	22	6	0
CCL	118	78	40	86	19	86	22	0	-3
NCL	136	78	40	86	17	86	19	1	-2
WCL	78	78	40	91	14	89	19	2	-5
SECL	106	78	40	86	25	89	22	-3	3
MCL	65	78	40	84	18	78	18	6	0
SCCL	64	78	40	83	29	78	28	5	1

Table 4.5: Mode-wise Despatch Status**(i) Rail***All figures in MT*

Subs	Despatch Status		Growth(%)
	Apr'2021	Apr'2020	M-O-M
ECL	2.736	2.45	11.72
BCCL	1.894	0.72	161.96
CCL	5.418	2.43	122.96
NCL	3.346	2.45	36.46
WCL	3.393	2.06	64.47
SECL	5.408	4.63	16.83
MCL	8.891	7.47	19.07
NEC	0	0.05	-100.00
CIL	31.09	22.26	39.63
SCCL	3.69	2.13	72.77
Total	34.77	24.40	42.53

(ii) Road

Subs	Despatch Status		Growth(%)
	Apr'2021	Apr'2020	M-O-M
ECL	0.337	0.141	139.01
BCCL	0.568	0.313	81.47
CCL	1.18	0.484	143.80
NCL	1.334	0.305	337.38
WCL	2.002	0.597	235.34
SECL	4.642	2.322	99.91
MCL	2.787	2.683	3.88
NEC	0	0.001	-100.00
CIL	12.85	6.85	87.70
SCCL	1.02	0.32	215.22
Total	13.87	7.17	93.43

(iii) MGR

Subs	Despatch Status		Growth(%)
	Apr'2021	Apr'2020	M-O-M
ECL	1.042	1.088	-4.23
BCCL			
CCL			
NCL	4.444	4.053	9.65
WCL	0.059	0.034	73.53
SECL	2.372	2.247	5.56
MCL	1.177	1.382	-14.83
NEC	0	0	
CIL	9.09	8.80	3.29
SCCL	0.70	0.57	23.10
Total	9.79	9.37	4.49

(iv) Conveyor Belt

Subs	Despatch Status		Growth(%)
	Apr'2021	Apr'2020	M-O-M
ECL			
BCCL			
CCL			
NCL	0.274	0.306	-10.46
WCL	0.006	0.025	-76.00
SECL	0.52	0.56	-7.14
MCL	0	0.116	-100.00
NEC	0	0	
CIL	0.80	1.01	-20.56
SCCL	0.04	0.02	175.00
Total	0.84	1.02	-17.50

(iv) Total Despatch- All Modes

Subs	Despatch Status		Growth(%)
	Apr'2021	Apr'2020	M-O-M
ECL	4.115	3.678	11.88
BCCL	2.462	1.036	137.64
CCL	6.598	2.914	126.42
NCL	9.398	7.115	32.09
WCL	5.647	2.822	100.11
SECL	12.942	9.758	32.63
MCL	12.855	11.648	10.36
NEC	0	0.051	-100.00
CIL	54.02	39.02	38.43
SCCL	5.44	3.04	79.08
Total	59.46	42.06	41.37

Table 4.6: Sector-wise Offtake

(i) Power Sector

Subs	Despatch Status		Growth(%)
	Apr'2021	Apr'2020	M-O-M
ECL	3.412	3.381	0.92
BCCL	1.931	0.692	179.05
CCL	5.518	2.55	116.39
NCL	8.331	6.284	32.57
WCL	4.696	2.518	86.50
SECL	10.213	7.707	32.52
MCL	8.94	8.366	6.86
NEC	0	0.046	-100.00
CIL	43.04	31.54	36.45
SCCL	4.48	2.86	56.73
Total	47.52	34.40	38.13

(ii) CPP

Subs	Despatch Status		Growth(%)
	Apr'2021	Apr'2020	M-O-M
ECL	0.007	0.004	75.00
BCCL	0	0	
CCL	0.114	0.113	0.88
NCL	0.646	0.701	-7.85
WCL	0.045	0.006	650.00
SECL	0.798	0.785	1.66
MCL	1.368	2.143	-36.16
NEC	0	0	
CIL	2.98	3.75	-20.63
SCCL	0.35	0.01	2569.23
Total	3.33	3.77	-11.69

(ii) Steel Sector

Subs	Despatch Status		Growth(%)
	Apr'2021	Apr'2020	M-O-M
ECL	0.015	0.008	87.50
BCCL	0.062	0.088	-29.55
CCL	0.018	0.048	-62.50
NCL			
WCL			
SECL	0.00	0.00	
MCL			
NEC			
CIL	0.10	0.14	-34.03
SCCL			
Total	0.10	0.14	-34.03

(iii) Cement Sector

Subs	Despatch Status		Growth(%)
	Apr'2021	Apr'2020	M-O-M
ECL	0.012	0	
BCCL			
CCL	0.007	0	
NCL	0.015	0	
WCL	0.074	0.001	7300.00
SECL	0.15	0.076	97.37
MCL	0.015	0	
NEC	0	0.004	-100.00
CIL	0.27	0.08	237.04
SCCL	0.21	0.01	2512.50
Total	0.48	0.09	441.57

(iv) Sponge Iron Sector

Subs	Despatch Status		Growth(%)
	Apr'2021	Apr'2020	M-O-M
ECL	0.039	0.012	225.00
BCCL			
CCL	0.047	0.018	161.11
NCL	0.045	0	
WCL	0.013	0.001	1200.00
SECL	0.34	0.247	37.65
MCL	0.161	0.151	6.62
NEC	0	0	
CIL	0.65	0.43	50.35
SCCL	0.013	0.003	333.33
Total	0.66	0.43	52.31

(iv) Total Offtake-All Sectors

Subs	Despatch Status		Growth(%)
	Apr'2021	Apr'2020	M-O-M
ECL	4.115	3.678	11.88
BCCL	2.462	1.036	137.64
CCL	6.598	2.914	126.42
NCL	9.398	7.115	32.09
WCL	5.647	2.819	100.32
SECL	12.942	9.758	32.63
MCL	12.854	11.648	10.35
NEC	0	0.051	-100.00
CIL	54.02	39.02	38.44
SCCL	5.44	3.04	79.08
Total	59.46	42.06	41.37

Table 4.7: Vendible Coal Stock*All Figures in MT*

Subs	Vendible Coal Stock as on different dates		Production of Coal Upto		Coal Stock in % of Production	
	Apr'30 2021	Apr'30 2020	Apr' 2021	Apr' 2020	Apr' 2021	Apr' 2020
ECL	5.11	3.05	2.94	3.39	173.63	89.89
BCCL	3.24	3.08	1.96	1.70	165.31	181.50
CCL	8.76	12.62	4.84	2.26	181.18	557.42
NCL	9.52	5.56	8.56	8.73	111.21	63.69
WCL	12.88	14.93	3.64	3.45	354.24	433.26
SECL	26.07	17.42	9.31	9.30	280.14	187.37
MCL	21.62	19.85	10.64	11.53	203.29	172.16
CIL	87.20	76.51	41.90	40.38	208.14	189.49
SCCL	4.14	2.55	4.86	3.00	85.31	84.91
Total	91.34	79.06	46.75	43.38	195.38	182.26

Performance of NLCIL

Performance of NLCIL

Table 5.1: Lignite Production (in MT)

Mode of Production	Production During Apr 2021			Apr'2020	Growth(%)
	Target	Actual	Achievement(%)		M-O-M
Departmental	1.20	1.38	115.00%	1.01	36.23
Outsourced	0.09	0.06	66.67%	0.06	5.26
Total	1.29	1.44	111.63%	1.07	34.58

Table 5.2: Production of Power (MU)

Company	Production During Apr 2021			Apr'2020	Growth(%)
	Target	Actual	Achievement(%)		M-O-M
NLCIL	1468.00	1541.45	105.00%	1426.33	8.07
NTPL	658.00	531.06	80.71%	462.93	14.72
Total	2126.00	2072.51	97.48%	1889.26	9.70

Table 5.3: Power from Renewable Sources (MU)

Sources	Production During Apr 2021			Apr'2020	Growth(%)
	Target	Actual	Achievement(%)		M-O-M
Wind Power	1.87	4.06	217.11%	1.87	117.11
Solar Power	176.13	187.67	106.55%	170.42	10.12
Total	178.00	191.73	107.71%	172.29	11.28

Table 5.4: Productivity

Mode of Production	Production During Apr 2021			Apr'2020	Growth(%)
	Target	Actual	Achievement(%)		M-O-M
Mines (in te)	10.12	13.23	130.7%	11.17	18.44
TPP (Kwhr)	39538	39657	100.3%	38042	4.25

Table 5.5: OBR (in MM3)

Mode	Production During Apr 2021			Apr'2020	Growth(%)
	Target	Actual	Achievement(%)		M-O-M
Departmental	13.28	13.03	98.11%	6.82	91.13
Outsourced	0.50	0.33	66.20%	0.77	-57.18
Total	13.78	13.36	96.95%	7.59	76.02

Table 5.6: Mine-wise HEMM Utilisation

Mine	Actual Status during Apr 2021 (in %)		Actual Status during Apr 2020 (in %)		Progressive Growth	
	Availability	Utilisation	Availability	Utilisation	Availability	Utilisation
Mine-1	67.48	94.31	39.55	95.02	27.93	-0.71
Mine 1A	65.61	97.15	35.15	97.23	30.46	-0.08
Mine 2	54.35	94.76	19.15	99.19	35.2	-4.43

Table 5.7: Sales

Power Exports

Subs	Export During Apr 2021		Apr'2020	Growth(%)	M-O-M
	Target	Actual			
NLCIL (MU)	1130.11	1324.85	1222.97	8.33	
NTPL (MU)	620	493.64	430.04	14.79	
Total Exp (MU)	1750.11	1818.49	1653.01	10.01	
Lignite Sales					
M/s TAQA (LT)	1.27	1.79	1.26	42.06	
Direct Sales (LT)	1	1.78	0.14	1171.43	
Total Sales (LT)	2.27	3.57	1.4	155.00	

Financial Performance

Table 6.1: Captial Expenditure

Subs/Com	Budget Estimate	Actual Exp during the month		
		FY 22	FY 21	Growth (%) M-o-M
ECL	1210	18.78	5.96	215.10
BCCL	875	5.4	0	
CCL	1760	7.29	0	
NCL	1640	102.37	0.06	170516.67
WCL	875	3.95	0	
SECL	4675	34.93	10.33	238.14
MCL	4675	17.86	7.43	140.38
CIL(Inc. CMPDIL)	1290	49.01	0.43	11297.67
CIL	17000	239.59	24.21	889.63
SCCL	2300	306.04	9.67	3064.84
NLCIL Stand Alone	760	9.26	23.88	-61.22
NLCIL JVs	1990	122.24	45.27	170.02
NLCIL	2750	131.5	69.15	90.17
Total	22050	677.13	103.03	557.22

Table 6.2: Head-wise Capital Expenditure*Rs Cr*

Head of Expenditure	Budget Estimate	Actual Exp	% Exp
		Mar'21	
Plant & Machinery	4124.56	259	6.28
Safety Plant & Machinery	1327.89	9.87	0.74
Development	882.39	81.43	9.23
Buidling (Factory)	24.86	1.79	7.20
Buidling (Others)	701.63	113.83	16.22
Furniture & Fixtures	2.71	0.2	7.38
Lands	3216.25	28.09	0.87
Vehicles	16.63	0	0.00
Railway Sidings	6288.61	24.77	0.39
Environemt	14.6	0	0.00
Solar Power	460.9	25.25	5.48
TPP	185.51	0.07	0.04
Others	4803.46	132.83	2.77
Total	22050	677.13	3.07

Note: Company-wise Details are given in Tables in Annex

Table 6.3: Total Manpower

Subsidiary/ Company	Manpower as on 1st Day of		
	April'20	April'21	Change
ECL	57153	54866	-2287
BCCL	43425	41149	-2276
CCL	38168	36717	-1451
NCL	14382	13801	-581
WCL	40401	38097	-2304
SECL	51426	47481	-3945
MCL	21991	21902	-89
NEC	1213	983	-230
CMPDI	3156	3068	-88
DCC	249	216	-33
CIL HQ	881	736	-145
Total CIL	272445	259016	-13429
SCCL	46021	43895	-2126
NLCIL	12486	11379	-1107
Total Manpower	330952	314290	-16662

Table 6.4: Debtors Due as on 30th Apr'21*Rs Cr*

Subsidiary/Company	Due as on last Day of		
	Apr'21	Mar'21	Change
ECL	4708.97	4675.04	33.93
BCCL	3564.71	3514.81	49.90
CCL	4219.00	4263	-44.00
NCL	3671.99	3016.87	655.12
WCL	2337.76	3066.73	-728.97
SECL	2595.20	1844.58	750.62
MCL	1181.88	1433.67	-251.79
Total CIL	22279.51	21814.7	464.81
SCCL	4329.39	2932.28	1397.11
NLCIL	6128.28	6182.63	-54.35
NTPL	1421.02	2093.35	-672.33
Total NLCIL	7549.3	8275.98	-726.68
Total Debtors Due	34158.2	33022.96	1135.24

Table 6.5: Age-wise Debtors Dues as on 30th Apr 2021

Subsidiary	Age-wise Debtors in Months					
	0-3	3-6	6-9	9-12	12+	Total
ECL	1249.98	817.71	509.750	718.7	1412.83	4708.97
BCCL	1780.56	590.59	460.05	180.21	553.3	3564.71
CCL	1393	883	343	387	1213	4219
NCL	2976.64		398.28		297.07	3671.99
WCL	1852.22	422.53	0	0	63.01	2337.76
SECL	266.17	579.99	290.6	247.44	1211	2595.2
MCL	926.91	48.81	94.48	17.36	94.32	1181.88
Total CIL	10445.48	3342.63	2096.16	1550.71	4844.53	22279.51
Percentage Share	46.88	15.00	9.41	6.96	21.74	100.00

Table 6.2 A : Statement of Head-wise Capital Expenditure of CIL *in Crores*

Sl No	Head of Expenditure	Budget Estimate	Actual Exp	% Expenditure
			Apr'21	
1	Plant & Machinery	2251.79	119.88	5.32
2	Safety Plant & Machinery	1307.81	8.34	0.64
3	Development	630.02	2.82	0.45
4	Buidling (Factory)			
5	Buidling (Others)	538.2	3.17	0.59
6	Furniture & Fixtures			
7	Lands	2707.05	13.67	0.50
8	Vehicles			
9	Transporation including Railway Sidings	5849.81	19.81	0.34
10	Environemt			
11	Solar Power			
12	TPP			
13	Others	3715.32	71.9	1.94
Total		17000	239.59	1.41

Table 6.2 B : Statement of Head-wise Capital Expenditure of SCCL *in Crores*

Sl No	Head of Expenditure	Budget Estimate	Actual Exp	% Expenditure
			Apr'21	
1	Plant & Machinery	551.64	79.42	14.40
2	Safety Plant & Machinery	20.08	1.53	7.62
3	Development	200.06	78.61	39.29
4	Buidling (Factory)	24.86	1.79	7.20
5	Buidling (Others)	119.02	108.54	91.19
6	Furniture & Fixtures	2.71	0.20	7.38
7	Lands	325.19	5.67	1.74
8	Vehicles	16.23	-	0.00
9	Railway Sidings	338.80	4.96	1.46
10	Environemt			
11	Solar Power	460.90	25.25	5.48
12	TPP	185.51	0.07	0.04
13	Others	55.00		0.00
Total		2300	306.04	13.31

Table 6.2 C : Statement of Head-wise Capital Expenditure of NLCIL *in Crores*

Sl No	Head of Expenditure	Budget Estimate	Actual Exp	% Expenditure
			Apr'21	
1	Plant & Machinery	1,321.13	59.70	4.52
2	Safety Plant & Machinery			
3	Development	52.31		
4	Buidling (Factory)			
5	Buidling (Others)	44.41	2.12	4.77
6	Furniture & Fixtures			
7	Lands	184.01	8.75	4.76
8	Vehicles	0.40		0.00
9	Railway Sidings	100.00		0.00
10	Environemt	14.60		0.00
11	Solar Power			
12	TPP			
13	Others	1,033.14	60.93	5.90
Total		2750	131.5	4.78

Table 6.6 A1: Coal Auction through Exclusive Scheme*During Apr'21*

Subs	Rail Mode			Road Mode		
	Qty Booked (L Te)	Bid Value (Rs Lakh)	Unit Value (Rs/te)	Qty Booked (L Te)	Bid Value (Rs Lakh)	Unit Value (Rs/te)
ECL						
BCCL				0.26	1037.69	3953
CCL						
NCL	0.97	1705.57	1752	19.64	39595.32	2016
WCL	0.48	1194.64	2489	3.84	10825.02	2823
SECL				2.36	3931.80	1667
MCL	60.64	65218.20	1075	15.27	17048.66	1116
NEC						
Total	62.094	68118.41	1097	41.367	72438.48	1751

Table 6.6 A2: Coal Auction through Special Forward Scheme*During Apr'21*

Subs	Rail Mode			Road Mode		
	Qty Booked (L Te)	Bid Value (Rs Lakh)	Unit Value (Rs/te)	Qty Booked (L Te)	Bid Value (Rs Lakh)	Unit Value (Rs/te)
ECL						
BCCL						
CCL						
NCL						
WCL				4.80	9921.20	2066.92
SECL				17.08	16336.64	956.48
MCL						
NEC						
Total	0.000	0.00		21.88	26257.84	1200

Table 6.6 A3: Coal Auction through Special Spot Scheme*During Apr'21*

Subs	Rail Mode			Road Mode		
	Qty Booked (L Te)	Bid Value (Rs Lakh)	Unit Value (Rs)	Qty Booked (L Te)	Bid Value (Rs Lakh)	Unit Value (Rs)
ECL						
BCCL				0.127	394.77	
CCL						
NCL						
WCL						
SECL						
MCL						
NEC						
Total	0.000	0.00		0.127	394.77	3108

Table 6.6 A4: Coal Auction through Spot Scheme*During Apr'21*

Subs	Rail Mode			Road Mode		
	Qty Booked (L Te)	Bid Value (Rs Lakh)	Unit Value (Rs/te)	Qty Booked (L Te)	Bid Value (Rs Lakh)	Unit Value (Rs/te)
ECL	1.95	8343.44	4285.28	1.65	8052.02	4868.21
BCCL				0.73	3028.07	4148.04
CCL						
NCL						
WCL	0.600	1393.80	2323.00	5.21	7177.41	1378.39
SECL				7.31	10123.41	1384.97
MCL	5.160	5392.76	1045.11	2.61	5683.70	2177.33
NEC						
Total	7.707	15130.00	1963	17.511	34064.62	1945

Table 6.6 A5: Coal Auction through Special Spot for Coal Importers*During Apr'21*

Subs	Rail Mode			Road Mode		
	Qty Booked (L Te)	Bid Value (Rs Lakh)	Unit Value (Rs)	Qty Booked (L Te)	Bid Value (Rs Lakh)	Unit Value (Rs)
ECL						
BCCL	0.64	2058.96	2059			
CCL						
NCL						
WCL						
SECL						
MCL						
NEC						
Total	0.640	2058.96	3217	0.000	0.00	

Table 6.7: E-auction company-wise

In Apr 2021, 55 % for coal offered by Coal India (CIL) subsidiary .i.e. 151.37 MT of coal allocated against 275.21 MT of coal quantity offered. Further, Coal India got 14% higher amount than notified price in apr 2021.

Company-wise Performance								
Company	ECL	BCCL	CCL	NCL	WCL	SECL	MCL	CIL
Total Qty offered (in LT)	4.26	25.99	0	26.95	44.14	50.37	123.5	275.21
Total Qty allocated (in LT)	3.6	1.76	0	20.61	12.33	26.79	86.28	151.37
Percentage Qty allocated (in %)	85%	7%		76%	28%	53%	70%	55%
Total Notified Value (in Cr. Rs.)	116.56	56.36	0	371.7	266.03	251.26	857.08	1918.99
Total Booking Value (in Cr. Rs.)	163.95	65.2	0	413.01	305.12	305.97	933.43	2186.68
% increase over Notified Price	41%	16%		11%	15%	22%	9%	14%

Table 6.8: E-auction scheme-wise

Total for APR 2021						
Auction	Spot	Special Forward	Exclusive Non Power	Special Spot	Special Spot for Coal Importers	Total
Qty. offered (in LT)	43.94	58.68	157.3	12.21	3.08	275.21
Qty. allocated (in LT)	25.26	21.88	103.46	0.13	0.64	151.37
% Qty. allocated	57%	37%	66%	1%	21%	55%
Notified Value (in Cr. Rs.)	399.32	222.12	1275.41	3.42	18.72	1918.99
Booking Value (in Cr. Rs.)	493.98	262.58	1405.58	3.95	20.59	2186.68
% increase over Notified Price	24%	18%	10%	15%	10%	14%

Status of Electricity Generation

Statement of Electricity Generation During Apr 2022

Table 1: Electricity Generation from different Sources

In MU

Source	Generation During Apr		
	FY 22	FY 21	Growth M-o-M
Thermal	103812.98	66805.72	55.40
Nuclear	3292.51	3860.07	-14.70
Hydro	8254.71	10121.41	-18.44
Bhutan Imp.	163.37	258	-36.68
Total Conventional	115523.57	81045.20	42.5
Wind	3734.38	3473.86	7.50
Solar	6122.18	5353.45	14.36
Biomass	288.92	269.97	7.02
Bagasse	884.08	888.17	-0.46
Small Hydro	440.02	693.60	-36.56
Others	179.35	33.27	439.07
Total Renewable	11648.93	10712.32	8.74
Total Generation	127172.5	91757.52	38.60
% Share of RE	9.16	11.67	-2.51
% Share of Coal & lignite	78.71	67.50	11.21

Table 1 A: Fuel-wise Electricity Generation in Thermal Sector

Fuel	Generation During Apr		
	FY 22	FY 21	Growth M-o-M
Coal	97155.56	59122.28	64.33
Lignite	2943.72	2814.63	4.59
Gas	3696.6	4858.01	-23.91
Diesel	17.1	10.8	58.33
Total Thermal	103812.98	66805.72	55.40

Table 2: Coal Consumption and Electricity Generation

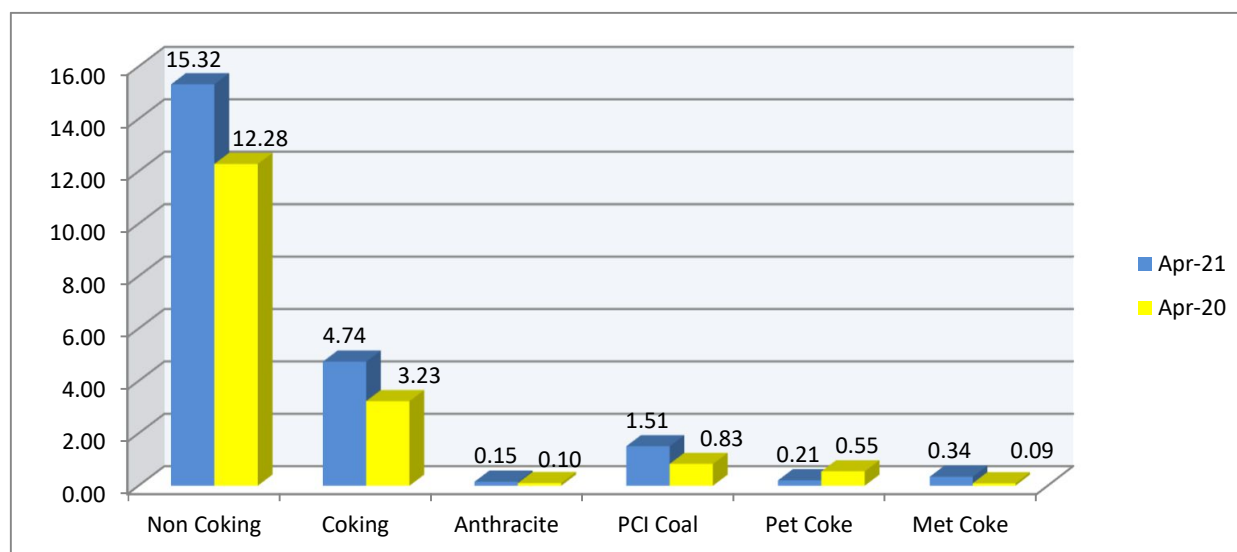
Items of Information	Generation During Apr		
	FY 22	FY 21	Growth M-o-M
Coal Consumption (MT)	63.6	38	67.37
Electricity From Coal (MU)	97155.56	59122.28	64.33
Average PLF	66.89	41.66	60.57
Specific Coal Consumption*	0.655	0.643	1.85

* Kg of Coal required to produce 1 Unit of Electricity

Status of Import Coal

Table 8.1: Total Coal Imports Including Coke (Provisional)
In MT

Type of Coal	During		
	Apr-21	Apr-20	Growth M-o-M
Non Coking	15.32	12.28	24.75
Coking	4.74	3.23	46.61
Anthracite	0.15	0.10	50.35
PCI Coal	1.51	0.83	81.06
Pet Coke	0.21	0.55	-62.55
Met Coke	0.34	0.09	273.16
Total	22.27	17.09	30.32

Coal Import status in Apr 2021

Table 8.2: State-wise Import of Coal and Coke
In L Te

State	During Apr		
	FY 22	FY 21	Growth (%) M-o-M
Gujarat	86.44	56.33	53.45
Maharashtra	13.68	8.24	66.08
Goa	8.96	7.12	25.78
Karnataka	5.57	1.86	199.00
Tamil Nadu	12.83	8.82	45.57
Puducherry	8.59	3.49	146.02
Andhra Pradesh	44.13	39.85	10.74
Odisha	29.61	26.19	13.07
West Bengal	12.89	6.99	84.32
Punjab	0.00	0.00	-100.00
Delhi	0.00	0.00	
Haryana	0.00	0.00	
Chhattisgarh	0.00	0.00	-11.11
Madhya Pradesh	0.00	0.00	
others	0.00	0.00	
Total	222.69	170.88	30.32

Note: Import is for major States. Total figures may not match with total import

Table 8.3: Sector Wise Import of Coal and Coke during April 2021

In MT

Sector	Non Coking	Coking	Anthr	PCI	Met Coke	Pet Coke	Total
Aluminium	0.055	0.161	0.000	0.000	0.000	0.000	0.22
Auto	0.033	0.000	0.000	0.000	0.000	0.000	0.03
Calciner	0.000	0.000	0.000	0.000	0.000	0.050	0.05
Calcium Carbide	0.058	0.000	0.000	0.000	0.000	0.000	0.06
Cement	2.245	0.165	0.000	0.000	0.009	0.110	2.53
Chemical & Petrochem	0.940	0.016	0.010	0.000	0.001	0.000	0.97
DRI	0.126	0.026	0.000	0.011	0.000	0.000	0.16
Power	3.902	0.101	0.000	0.000	0.000	0.000	4.00
Ferro Alloy	0.059	0.033	0.000	0.000	0.016	0.000	0.11
Graphite Electrode	0.000	0.000	0.001	0.000	0.000	0.010	0.01
Iron & Steel	0.531	3.620	0.110	1.480	0.273	0.000	6.01
Logistics	0.138	0.000	0.000	0.000	0.000	0.000	0.14
Lime Klin	0.000	0.000	0.000	0.000	0.000	0.000	0.00
Paper & Plywood	0.086	0.000	0.000	0.000	0.000	0.000	0.09
Pharma	0.000	0.000	0.000	0.000	0.000	0.000	0.00
Sugar	0.015	0.000	0.000	0.000	0.000	0.000	0.02
Textile	0.267	0.000	0.000	0.000	0.000	0.000	0.27
Traders	5.676	0.529	0.020	0.017	0.046	0.004	6.29
Foundry	0.000	0.000	0.000	0.000	0.000	0.000	0.00
Tyres	0.000	0.000	0.000	0.000	0.000	0.000	0.00
Others	1.192	0.085	0.008	0.000	0.000	0.035	1.32
Total	15.32	4.74	0.15	1.51	0.34	0.21	22.27

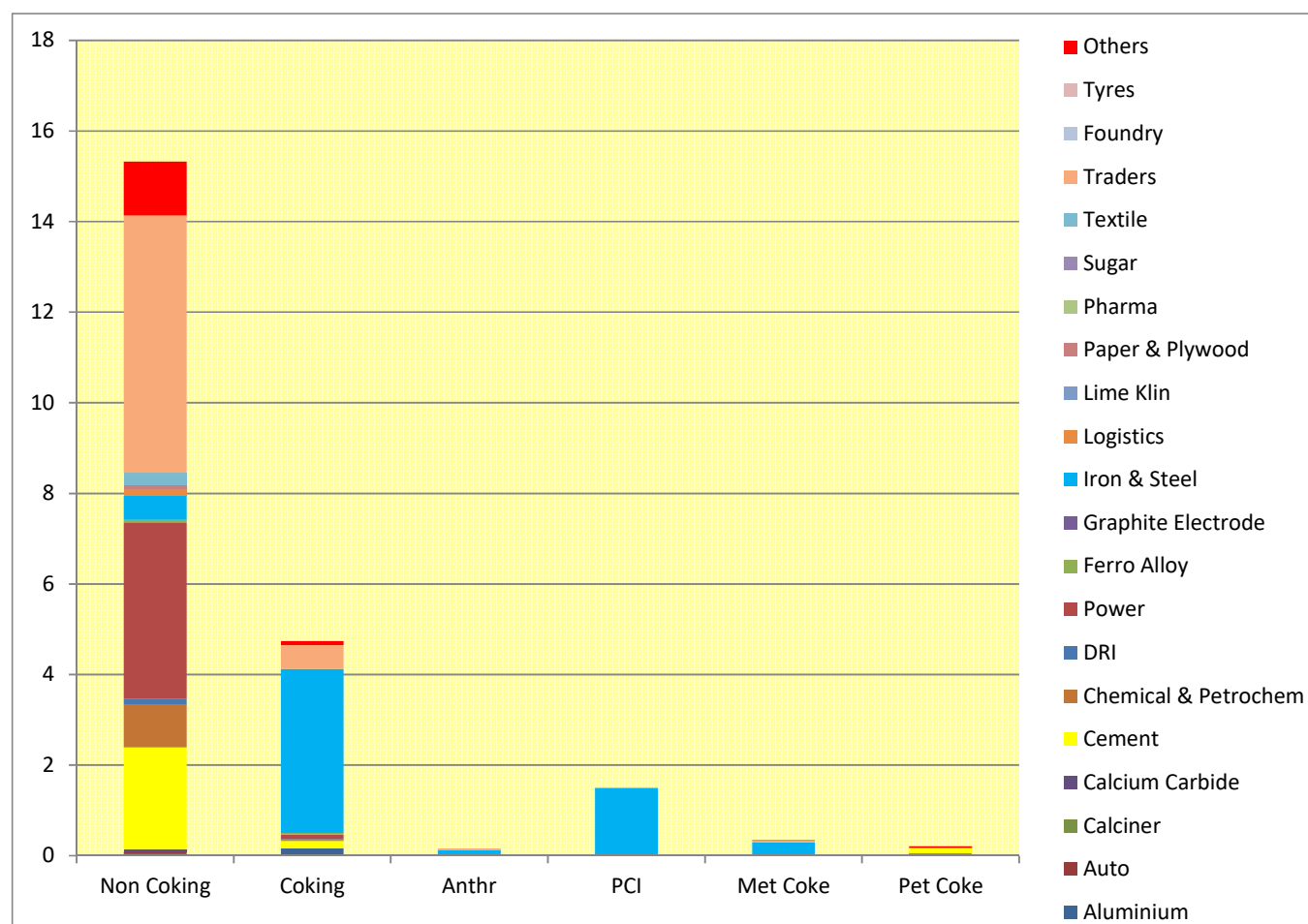


Table 8.4: Non-Coking Coal Import during the month of Apr 2021 Grade-wise

In Lakh Te

Port	G2	G4	G5	G6	G7	G8	G9	G11	G12	G14	Not Known	Total
Bedi											0.32	0.32
Bhavnagar											1.99	1.99
Dahej											5.08	5.08
Dhamra											1.61	1.61
Ennore											7.46	7.46
Gangavaram	2.52				2.74	1.63					2.12	9.01
Hazira											6.08	6.08
Jafrabad											0.08	0.08
Jaigad											2.96	2.96
Jakhau											0.28	0.28
Kakinada										0.37	0.89	1.26
Kandla	4.98	1.59	1.39	1.81	0.75	2.22	0.83	0.56	2.24	1.16	2.68	20.23
Karaikal											8.59	8.59
Kolkata				0.60	0.60	0.90					0.20	2.30
Krishnapatnam		0.79		0.40		0.82				0.77	7.02	9.80
Magdalla											8.88	8.88
Marmagao											1.42	1.42
Muldwarka											0.05	0.05
Mumbai & Jnpt											1.74	1.74
Mundra			1.65	1.56	6.72	2.53		2.62			11.48	26.57
Navlakhi											11.25	11.25
New Mangalore					1.00						3.70	4.70
Okha											0.50	0.50
Paradip											3.26	3.26
Pipavav											1.99	1.99
Porbandar											0.65	0.65
Sikka											0.08	0.08
Tuticorin / Voc											4.96	4.96
Vizag				0.50	2.21	0.37				0.00	0.47	3.55
Others											6.56	6.56
Total	7.50	2.39	3.04	4.87	14.01	8.47	0.83	3.19	2.24	2.31	104.36	153.21

Grade-wise Non-coking Coal Import during Apr 2021

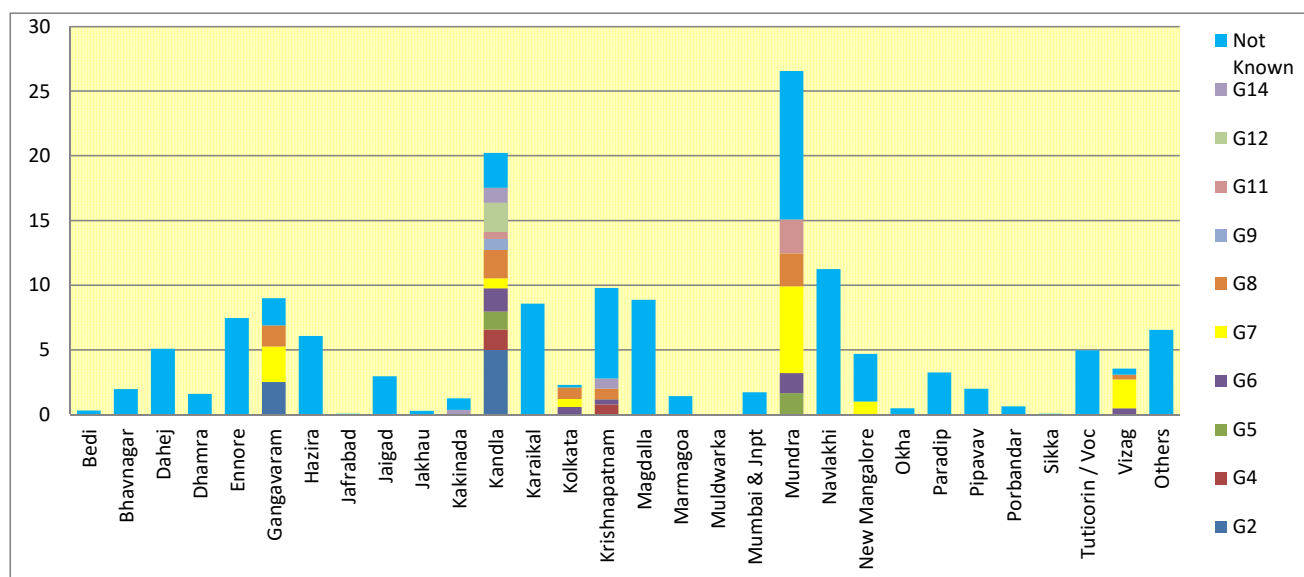


Table 8.5: Country-wise Non-coking Coal Import during April 2021

In Lakh Te

Port	G2	G4	G5	G6	G7	G8	G9	G11	G12	G14	Not Known	Total
Australia				2.05	1.34	1.65					6.65	11.69
Indonesia				1.56	5.38	5.55	0.00	3.19	2.24	2.31	66.38	86.62
Kazakistan			1.65								0.00	1.65
Mozambique											0.55	0.55
Russia											0.77	0.77
South Africa			0.35	1.26	7.29	1.27	0.83				18.25	29.26
United States	7.50	2.39	1.04								5.78	16.71
Others											5.97	5.96
Total	7.50	2.39	3.04	4.87	14.01	8.47	0.83	3.19	2.24	2.31	104.36	153.21

Country-wise and Grade-wise Coking Coal Import during Apr 2021

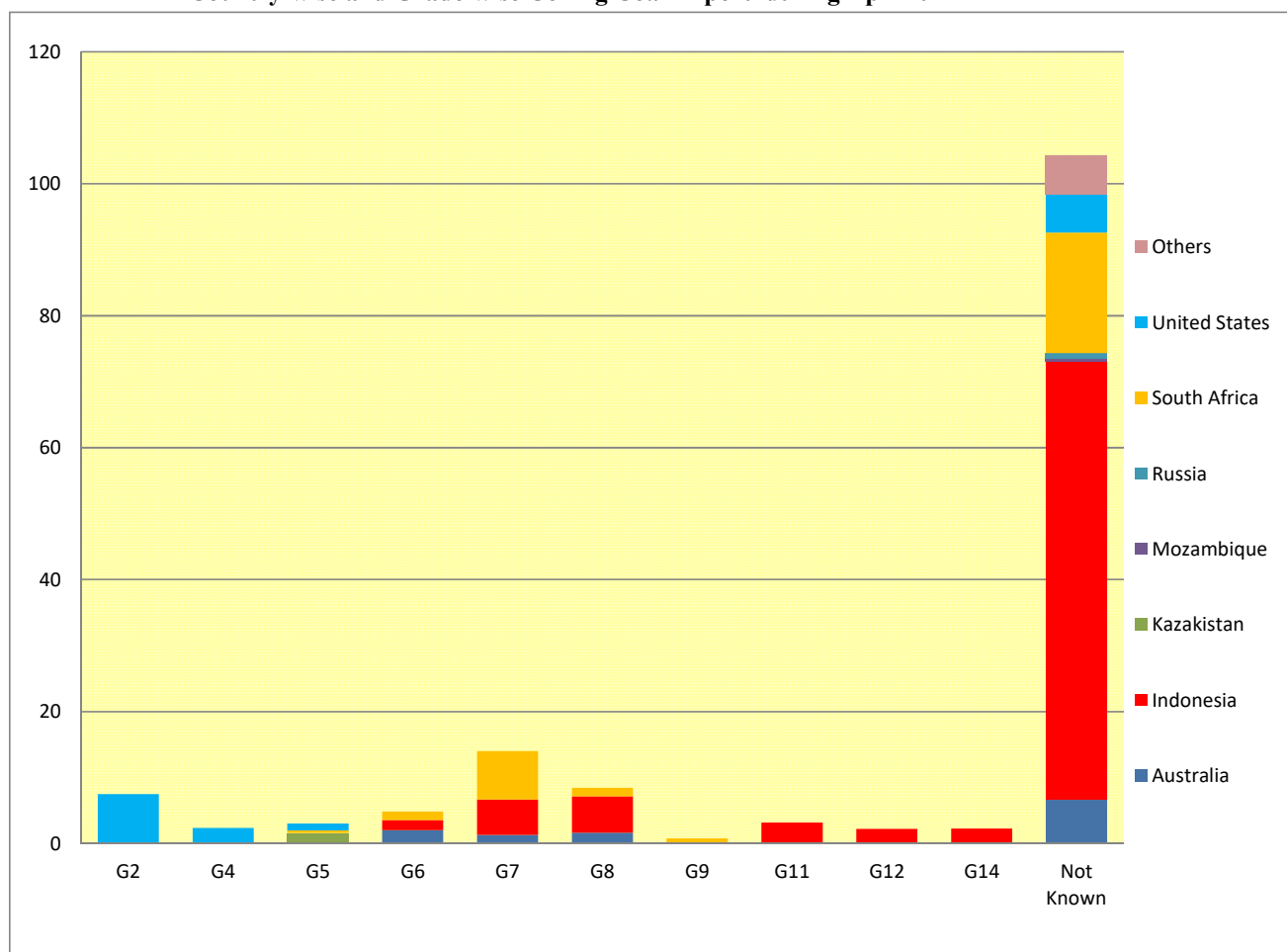


Table 8.6: Port and Country-wise Import of Non-Coking Coal during Apr 2021 (L Te)

Port	Australia	Indonesia	Kazakistan	Mozambique	Russia	South Africa	United States	Others	Total
Bedi								0.32	0.32
Bhavnagar		1.59				0.40			1.99
Dahej	0.99	2.72				1.37			5.08
Dhamra						1.61			1.61
Ennore		3.53				0.97	2.96		7.46
Gangavaram		1.63				3.57	2.52	2.12	9.84
Hazira		4.98				1.10			6.08
Jafrabad								0.08	0.08
Jaigad	0.65	0.53				0.58	1.21		2.96
Jakhau								0.28	0.28
Kakinada		1.26							1.26
Kandla	1.65	4.49				2.38	7.62	1.01	17.16
Karaikal		8.59						0.00	8.59
Kolkata		0.50				1.80			2.30
Krishnapatnam	2.23	3.72				3.28	1.80	1.01	12.04
Magdalla	0.36	7.64				0.88			8.88
Marmagao	0.35					1.07			1.42
Muldwarka								0.05	0.05
Mumbai & Jnpt		1.74					0.00		1.74
Mundra	2.99	21.93	1.65						26.57
Navlakhi		11.25							11.25
New Mangalore	2.24	0.68				1.78			4.70
Okha								0.50	0.50
Paradip		0.78				2.47			3.26
Pipavav	0.23	0.61		0.55			0.60		1.99
Porbandar						0.14		0.51	0.65
Sikka								0.08	0.08
Tuticorin / Voc		4.19			0.77				4.96
Vizag		0.37				3.18			3.55
Others		3.89				2.68			6.56
Total	11.69	86.61	1.65	0.55	0.77	29.26	16.71	5.97	153.21

Table 8.7: Port and Country-wise Average Unit Value of Non-Coking Coal Imports during Apr 2021 (US\$/te)

Port	Australia	Indonesia	Kazakistan	Mozambique	Russia	South Africa	United States	Average Price
Bedi	1023	69.7081				78.411		97.02
Bhavnagar								0.00
Dahej		66.679				67.094		66.73
Dhamra	73.7709	59.264				85.106		67.12
Ennore						83.295		83.30
Gangavaram		63.0037				85.459	72.0933	73.89
Hazira		68.2933				74.123	77.2751	69.80
Jafrabad		47.7636				66.352		49.31
Jaigad								0.00
Jakhau	81.1361	75.9111				71.526	98.205	80.54
Kakinada								0.00
Kandla		44.7552						44.76
Karaikal	68.2639	59.6464				80.098	87.9993	72.52
Kolkata		68.5136						68.51
Krishnapatnam		77.466				98.448		87.26
Magdalla	69.6464	45.1219				73.666	90.6386	67.09
Marmagoa	54.7532	63.5723				115.53		64.36
Muldwarka	123.207					71.526		84.45
Mumbai & Jnpt								0.00
Mundra		77.0541					659.369	465.26
Navlakhi	66.4773	67.4457	66.2					67.25
New Mangalore		59.1458						59.15
Okha	77.5928	78.7758				75.468		76.47
Paradip								0.00
Pipavav		55.3836				99.623		96.67
Porbandar	53	99.2248		95.25			88.1875	83.92
Sikka						66.15		33.07
Tuticorin / Voc								0.00
Vizag		63.9605			74.95			64.48
Others		65.7085				74.074		72.68
Average Price	105.60	63.23	66.20	95.25	74.95	81.57	179.55	78.58

Table 8.8: Port and Country-wise Average Value of Non-Coking Coal Imports during Apr 2021 (Rs/te)

Port	Australia	Indonesia	Kazakistan	Mozambique	Russia	South Africa	United States	Average Price
Bedi	77867	5246.2				5814.169		7288.91
Bhavnagar								0.00
Dahej		4879.523				4975		4893.16
Dhamra	5617.657	4477.204				6365.11		5056.68
Ennore						6342.914		6342.91
Gangavaram		4758.918				6507.684	5440.981	5602.93
Hazira		5200.537				5551.383	5779.667	5239.85
Jafrabad		3592.501				4919.995		3703.13
Jaigad								0.00
Jakhau	5951.333	5716.16				5446.68	7478.311	6100.13
Kakinada								0.00
Kandla		3374.876						3374.88
Karaikal	5198.298	4542.076				6058.075	6631.502	5492.16
Kolkata		5145.255						5145.26
Krishnapatnam		5804.33				7445.339		6570.13
Magdalla	5150.854	3380.936				5551.266	6902.127	5037.77
Marmagao	4059.95	4561.679				8797.878		4665.41
Muldwarka	9382.211					5446.675		6430.56
Mumbai & Jnpt								0.00
Mundra		5816.775					49335.68	34829.38
Navlakhi	5062.249	5044.164	4908.73					5041.74
New Mangalore		4452.662						4452.66
Okha	5732.862	5916.705				5663.891		5723.27
Paradip								0.00
Pipavav		4106.694				7475.413		7250.83
Porbandar	4035.95	7555.967		7253.25			6539.104	6346.07
Sikka						4905		2452.50
Tuticorin / Voc								0.00
Vizag		4787.434			5707.44			4833.43
Others		4872.283				5614.323		5475.19
Average Price	7952.22	4716.63	4908.73	7253.25	5707.44	6153.49	13485.38	5952.64

Table 8.9: Coking Coal Import during Apr 2021

In L Te

Port	Australia	Canada	Indonesia	Mozambique	New Zealand	Russia	United Kingdom	United States	Total
Dhamra	5.6		0.4	0.1				0.0	6.2
Ennore							0.0		0.0
Gangavaram	4.5								4.5
Hazira							0.0		0.0
Jaigad	2.1	1.7							3.8
Kakinada	0.8								0.8
Kolkata	6.8		0.3	0.8				0.6	8.5
Krishnapatnam	2.3		0.6						2.9
Marmagao	4.5	1.5				0.7			6.7
Mundra	2.1								2.1
New Mangalore	0.3								0.3
Paradip	6.6			0.7	0.5				7.7
Vizag	3.2			0.1				0.5	3.8
Total	38.79	3.22	1.34	1.68	0.47	0.75	0.00	1.11	47.37

Coking Coal Import during Apr 2021

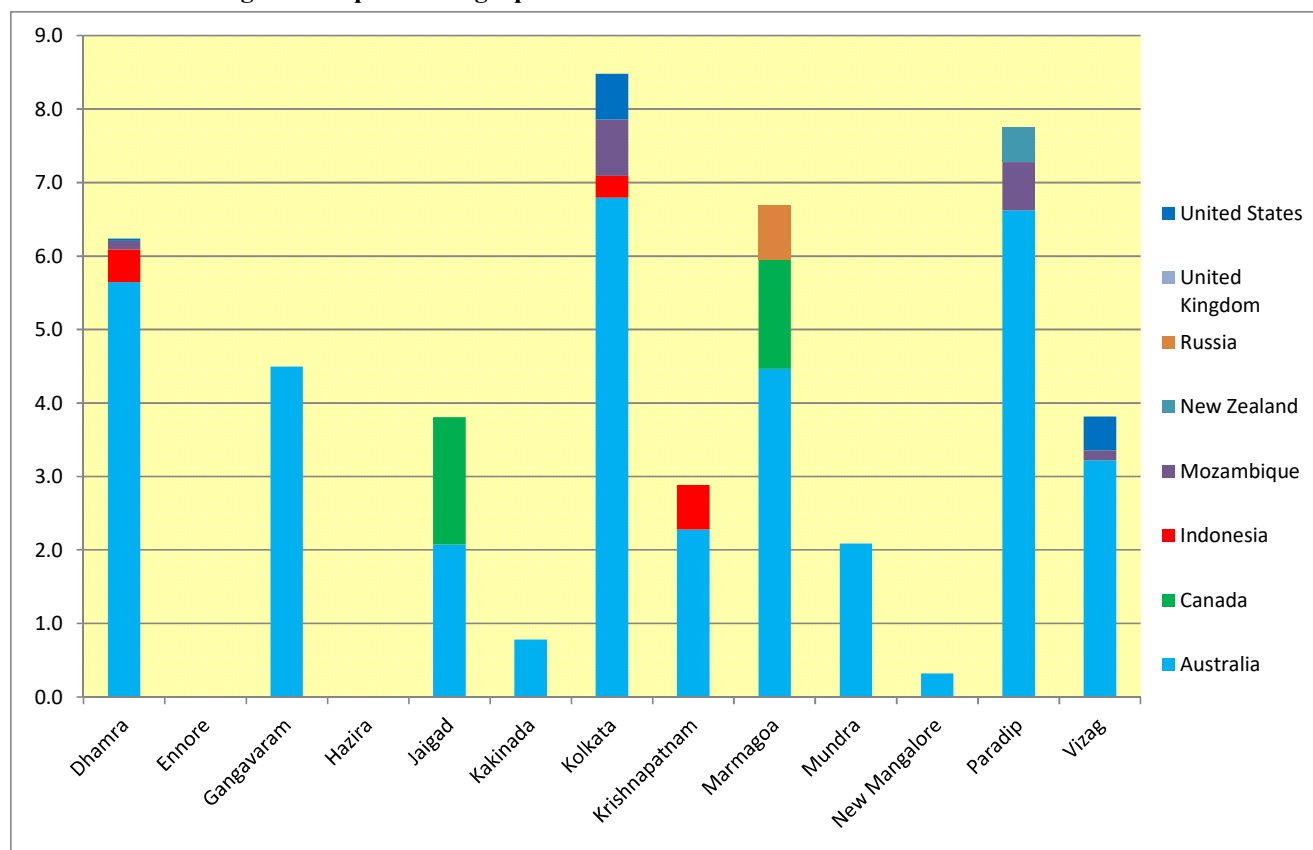


Table 8.10: Average Price of Imported Coking Coal during Apr 2021 (US\$/te)

Port	Australia	Canada	Indonesia	Mozambique	New Zealand	Russia	United Kingdom	United States	Average Price
Dhamra	133.3		122.6	125.0				152.0	132.36
Ennore							427.9		427.92
Gangavaram	128.8								128.76
Hazira							396.1		396.11
Jaigad	128.5	124.0							126.77
Kakinada	169.7								169.65
Kolkata	138.0		122.6	131.5				144.0	137.08
Krishnapatnam	127.9		129.7						128.32
Marmagoa	129.6	138.8				122.3			131.73
Mundra	100.9								100.94
New Mangalore	145.8								145.83
Paradip	134.3			132.4	129.4				133.81
Vizag	145.8			146.1				135.9	144.81
Average Price	134.61	131.39	125.22	133.15	129.36	122.32	412.02	142.35	139.61

Table 8.11: Average Price of Imported Coking Coal during Apr 2021 (Rs/te)

Port	Australia	Canada	Indonesia	Mozambique	New Zealand	Russia	United Kingdom	United States	Average Price
Dhamra	10022.22		9332.64	9520.56				11272.41	9963.45
Ennore							32586.33		32586.33
Gangavaram	9677.76								9677.76
Hazira							29767.53		29767.53
Jaigad	9624.25	9307.17							9505.34
Kakinada	12579.55								12579.55
Kolkata	10361.19		9332.64	10015.55				10810.47	10306.30
Krishnapatnam	9590.59		9873.82						9661.40
Marmagoa	9659.03	10417.30				9314.37			9862.20
Mundra	7484.33								7484.33
New Mangalore	10813.29								10813.29
Paradip	10112.85			9897.74	9592.10				10058.62
Vizag	10960.39			10976.19				10348.52	10897.65
Average Price	10105.66	9862.23	9535.58	10032.82	9592.10	9314.37	31176.93	10718.08	10496.99

Table 8.12 Coal Imports (Provisional)

In MT

Type of Coal	During Apr		
	FY 22	FY 21	Growth M-o-M
Non Coking *	15.32	12.28	24.75
Coking	4.74	3.23	46.61
Anthracite	0.15	0.10	50.35
Total	20.21	15.61	29.44

* Non-Coking Coal means Bituminous and Steam Coal

Table 8.13: Non-Coking Coal Consumption by Cement and DRI Sectors

(i) Cement Sector

In MT

Items	During Apr		
	FY 22	FY 21	Growth M-o-M
Cement Production	27.932	4.305	548.83
Coal Consumption	4.748	0.732	548.83
Domestic Coal Supply	0.500	0.103	385.44
Coal Import	2.245	0.480	367.62
Balance of Coal	-2.004	-0.149	1246.24

(ii) DRI Sector

In MT

Items	During Apr		
	FY 22	FY 21	Growth M-o-M
DRI Production	2.327	0.434	436.18
Coal Consumption	3.225	0.602	436.18
Domestic Coal Supply	0.663	0.463	43.24
Coal Import	0.126	0.010	1160.00
Balance of Coal	-2.436	-0.129	1795.37

Table 8.14: Coking Coal Consumption by Steel Sector

In MT

Items	During Apr		
	FY 22	FY 21	Growth M-o-M
Hot Metal Production	6.046	3.236	86.84
Coal Consumption	4.837	2.589	86.84
Domestic Coal Supply	0.554	0.796	-30.40
Coal Import	3.620	2.860	26.56
Balance of Coal	-0.663	1.067	-162.13

Table 8.15: Summary of Coal Consumption in Major Sectors*In MT*

Sectors	During Apr		
	FY 22	FY 21	Growth M-o-M
Power Utilities	63.600	38.000	67.37
Cement	4.748	0.732	548.83
DRI	3.225	0.602	436.18
Total Non-Coking	63.514	62.849	1.06
Steel	4.837	2.589	86.84
Total Coking	4.943	4.919	0.49
Total Coal	68.458	67.768	1.02

Note: Coal Consumption is estimated on the basis of Specific Coal Consumption in different Sectors

Table 8.16: Statement of Coal Supply to Other Sectors*In MT*

Source of Supply	During Apr		
	FY 22	FY 21	Growth M-o-M
Domestic Supply	7.215	2.637	173.61
Import	9.342	8.81	6.04
Total	16.557	11.447	44.64

Projects of PSUs

9.1 STATUS OF MAJOR ONGOING PROJECTS of CIL COSTING >= Rs. 500 CRS OR CAPACITY >= 3 MTY

SL NO.	SUB	PROJECT	TYPE	TOTAL CAPACITY (MTY)	SANC. CAPITAL (CRS)	SCH DT OF COMP	ANT DT OF COMP	EXPEN SINCE INCEPTION TILL Mar'21* (PROV)	SCH & DELAY (Yrs)	REASON OF DELAY
1	ECL	JHANJRA COMBINED	UG	5.00	1210.12	31-03-2029	31-03-2029	26.05	ON SCH	
2	ECL	PARASEA BELBAID	UG	2.07	826.42	31-03-2027	31-03-2027	0.03	ON SCH	
3	ECL	SIDULI UG+OC	UG	2.32	535.18	31-03-2026	31-03-2026	1.89	ON SCH	
4	ECL	TILABONI	UG	1.86	916.12	31-03-2027	31-03-2027	0.61	ON SCH	
5	ECL	CHITRA EAST RCE	OC	2.50	513.99	31-03-2024	31-03-2024	123.25	ON SCH	
6	ECL	HURA C	OC	3.00	335.35	31-03-2022	31-03-2022	247.53	ON SCH	
7	ECL	NAKRKONDA KUMARDI B	OC	3.00	502.68	31-03-2029	31-03-2029	12.62	ON SCH	
8	ECL	SONEPUR-BAZARI COMB.	OC	8.00	1055.05	31-03-2018	31-03-2022	669.83	4	Delayed due to R&R, Railway siding and CHP. Construction of Railway siding & CHP in progress. Tree felling over 32.65 Ha forest land to be expedited by DFO, Durgapur, Govt. of West Bengal.
9	ECL	MOHANPUR PH-II	OC	2.50	888.99	31-03-2025	31-03-2025	0.69	ON SCH	
10	BCCL	MOONIDIH XV SEAM	UG	2.50	1230.27	31-03-2019	31-03-2022	461.54	3	Initially delayed due to acquisition of Tenancy Land. Fire & Gas detected during incline drive. Hard Strata has been encountered in both the inclines which has slowed down the progress of Incline drive. The work of the project is further delayed due to Covid-19.

SL NO.	SUB	PROJECT	TYPE	TOTAL CAPACITY (MTY)	SANC. CAPITAL (CRS)	SCH DT OF COMP	ANT DT OF COMP	EXPEN SINCE INCEPTION TILL Mar'21* (PROV)	SCH & DELAY (Yrs)	REASON OF DELAY
11	BCCL	NORTH TISRA SOUTH TISRA EXPANSION	OC	6.00	555.52	31-03-2021	31-03-2022	5.87	1	Delay in acquisition of land because of non-availability of land records at district. Revised PR is under preparation for reorganisation of project.
12	BCCL	MADHUBAN NLW WASHERY	WSRY	5.00	289.45	31.05.2014	30.07.2021	281.27	7	Repeated failure by HEC in adhering to timelines committed by them. 9 th time extension has been granted to M/s HEC up to July'2021. Commissioning of RLS & Railway siding shall be possible only after commissioning of the washery by M/s HEC
13	CCL	AMRAPALI	OC	25.00	5136.15	31-03-2028	31-03-2028	245.97	ON SCH	
14	CCL	CHANDRAGUPTA	OC	15.00	973.50	31-03-2026	31-03-2026	0.00	ON SCH	
15	CCL	KOTRE BASANTPUR PACHMO	OC	5.00	625.40	31-03-2028	31-03-2028	10.33	ON SCH	
16	CCL	MAGADH EXPN.	OC	51.00	7254.37	31-03-2028	31-03-2028	706.20	ON SCH	
17	CCL	NORTH URIMARI EXPN	OC	7.50	1553.06	31-03-2023	31-03-2023	277.48	ON SCH	
18	CCL	RAJRAPPA RCE	OC	3.00	510.85	31-03-2016	31-03-2022	426.29	6	Delay in possession of non-forest land as well as forest land.
19	CCL	SANGHAMITRA	OC	20.00	1694.74	31-03-2025	31-03-2025	0.00	ON SCH	
20	CCL	JHARKHAND LAIYO	OC	1.00	764.57	31-03-2031	31-03-2031	134.57	ON SCH	
21	CCL	PATRATU ABC	UG	5.00	1712.55	31-03-2029	31-03-2029	0.00	ON SCH	
22	CCL	PUNDI EXPN	OC	5.00	713.35	31-03-2025	31-03-2025	126.00	ON SCH	
23	CCL	ROHINI KARKETTA	OC	10.00	1020.42	31-03-2025	31-03-2025	84.35	ON SCH	

SL NO.	SUB	PROJECT	TYPE	TOTAL CAPACITY (MTY)	SANC. CAPITAL (CRS)	SCH DT OF COMP	ANT DT OF COMP	EXPEN SINCE INCEPTION TILL Mar'21* (PROV)	SCH & DELAY (Yrs)	REASON OF DELAY
24	MCL	ANANTA EXPN.PH-III	OC	15.00	251.94	31-03-2012	31-03-2022	208.51	10	Delay in FC due to delayed grant of NoC from Gramsabha, identification of CA site and Construction of SILO.
25	MCL	BALARAM EXPN	OC	15.00	3504.21	31-03-2029	31-03-2029	629.53	ON SCH	
26	MCL	SIARMAL	OC	40.00	3756.36	31-03-2026	31-03-2026	1990.91	ON SCH	
27	MCL	BHARATPUR REORGANISATION	OC	20.00	2838.87	31-03-2029	31-03-2029	1263.46	ON SCH	
28	MCL	BASUNDHARA WEST EXTN.	OC	7.00	479.15	31-03-2019	31-03-2024	283.93	5	Delayed due to EC and FC for 227.61 Ha forest Land. Gram Sabha for Gopalpur and Ratansara villages have been conducted for FRA.
29	MCL	GARJANBAHAL	OC	10.00	1375.38	31-03-2021	31-03-2024	513.33	3	Delayed due to evacuation Infrastructure.
30	MCL	LAKHANPUR BELPAHAR LILARI	OC	30.00	2434.75	31-03-2027	31-03-2027	233.98	ON SCH	
31	MCL	HINGULA-II EXPN.PH-III	OC	15.00	479.53	31-03-2013	31-03-2022	507.71	9	Delay in forest diversion & EMP clearance, development of R&R Site at Kochianali & delay in construction of SILO.
32	MCL	KULDA EXPN	OC	5.00	289.03	31-03-2018	31-03-2024	126.67	6	Delay in construction of SILO at Barpali Bulb.
33	MCL	GOPALJI KANIHA EXPANSION	OC	30.00	8416.19	31-03-2028	31-03-2028	920.80	ON SCH	
34	MCL	BHUBANESWARI EXPANSION	OC	40.00	3145.45	31-03-2031	31-03-2031	623.35	ON SCH	
35	MCL	IB VALLEY WASHERY	WSRY	10.00	392.76	31-03-2020	31-03-2022	198.42	2	The Project started late due to delay in handover of land. But again, due to lockdown the Project is further delayed.

SL NO.	SUB	PROJECT	TYPE	TOTAL CAPACITY (MTY)	SANC. CAPITAL (CRS)	SCH DT OF COMP	ANT DT OF COMP	EXPEN SINCE INCEPTION TILL Mar'21* (PROV)	SCH & DELAY (Yrs)	REASON OF DELAY
36	NCL	BLOCK - B EXPN. OCP	OC	8.00	998.71	31-03-2023	31-03-2023	0.00	ON SCH	
37	NCL	JAYANT EXPN	OC	20.00	1783.09	31-03-2021	31-03-2022	622.67	1	Due to delay in execution of CHP SILO of incremental capacity.
38	NCL	DUDHICHUA EXPN	OC	20.00	1255.17	31-03-2022	31-03-2022	152.16	ON SCH	
39	NCL	BINA KAKRI AMALGAMATION	OC	14.00	836.42	31-03-2024	31-03-2024	60.07	ON SCH	
40	NCL	NIGAHI	OC	25.00	1729.68	31-03-2026	31-03-2026	0.00	ON SCH	
41	SECL	AMADAND RPR	OC	4.00	869.44	31-03-2021	31-03-2022	121.28	1	Acquisition and possession of land and grant of EC is awaited.
42	SECL	BAROUD EXPANSION RCE	OC	10.00	2309.8	31-03-2029	31-03-2029	276.18	ON SCH	
43	SECL	CHHAL SEAM-III	OC	6.00	610.63	31-03-2022	31-03-2022	145.79	ON SCH	
44	SECL	JAGANNATHPUR RCE	OC	3.00	459.49	31-03-2020	31-03-2022	201.47	2	Delay due to refusal of work of OB Removal & Coal Extraction by L-1 Bidder. Work was awarded after re-tendering and is in progress.
45	SECL	DURGAPUR	OC	6.00	916.24	31-03-2023	31-03-2023	9.72	ON SCH	
46	SECL	MANIKPUR EXPN.	OC	3.50	321.50	31-03-2014	31-03-2023	209.25	9	Initially, project delayed on account of delay in EC and forestry clearance. As on date, project is getting delayed on account of construction of in-pit crushing conveyor system. Estimated cost is Rs.156.81 crores. Work awarded on 05.12.2020. Agreement to be executed.
47	SECL	GEVRA EXPN	OC	70.00	11816.40	31-03-2023	31-03-2023	4268.94	ON SCH	

SL NO.	SUB	PROJECT	TYPE	TOTAL CAPACITY (MTY)	SANC. CAPITAL (CRS)	SCH DT OF COMP	ANT DT OF COMP	EXPEN SINCE INCEPTION TILL Mar'21* (PROV)	SCH & DELAY (Yrs)	REASON OF DELAY
48	SECL	KUSMUNDA EXPN	OC	50.00	7612.33	31-03-2023	31-03-2023	2630.03	ON SCH	
49	SECL	MADANNAGAR	OC	12.00	1875.32	31-03-2024	31-03-2024	0.00	ON SCH	
50	SECL	PELMA	OC	15.00	1624.59	31-03-2023	31-03-2023	8.27	ON SCH	
51	SECL	RAMPUR BATURA	OC	4.00	1248.93	31-03-2026	31-03-2026	198.98	ON SCH	
52	SECL	VIJAY WEST	OC	3.00	976.95	31-03-2026	31-03-2026	75.96	ON SCH	
53	SECL	DIPKA EXPN	OC	40	5241.4	31-03-2029	31-03-2029	1931.03	ON SCH	
54	SECL	PORDA CHIMTAPANI	OC	10	2310.12	31-03-2026	31-03-2026	0.00	ON SCH	
55	WCL	GAURI PAUNI EXPN	OC	3.50	337.38	31-03-2029	31-03-2029	48.04	ON SCH	
56	WCL	GONDEGAON GHATROHAN AMAL. RPR	OC	3.50	325.18	31-03-2022	31-03-2022	253.17	ON SCH	
57	WCL	MUNGOLI NIRGUDA EXT DEEP	OC	4.375	826.80	31-03-2026	30-11-2026	230.49	ON SCH	
58	WCL	NILJAI EXPN DEEP	OC	3.50	404.45	31-03-2022	31-03-2022	246.02	ON SCH	
59	WCL	PAUNI II EXPANSION	OC	3.25	499.00	31-03-2021	31-03-2021	252.15	ON SCH	
60	WCL	YEKONA-I & II AMALGAMATED	OC	2.75	745.83	31-03-2025	31-03-2025	365.38	ON SCH	
61	WCL	AMAL. INDER KAMPTEE DEEP	OC	3.20	313.34	31-03-2024	31-03-2024	148.72	ON SCH	
62	WCL	DINESH (MKD-III)	OC	8.00	1184.33	31-03-2027	31-03-2027	383.13	ON SCH	
63	WCL	DURGAPUR EXTN DEEP	OC	3.00	378.87	31-03-2021	31-03-2023	295.83	2	Due to delay in acquisition and possession of forest land.
		Total		786.83	107993.1			24477.7		

Note: Expenditure of SECL Projects is upto Feb'21.

9.2 NLCIL-ONGOING PROJECTS

Date of approval	Sanctioned Cost Rs. Crore	Scheduled date of completion	Anticipated Cost Rs. Crore	Anticipated date of completion	Cumulative Expenditure upto31.03.2021 Rs. Crore	Capex 2021-22 Rs. Crore		Cumulative (upto 30.04.2021) Rs. Crore	Cumulative Progress (%) (upto30.04.2021)				Remarks
						Target	Actual Provl (upto 30.04.2021)		Physical		Financial		
									Target /Schedule	Actual	Target /Schedule	Actual	
NEYVELI NEW THERMAL POWER PROJECT (2X500 MW): (NNTPP)													
09.06.2011	5907.11 (Oct- 2010)	U-I: Oct 2017 U-II: Apr 2018	5907.11 (Oct-2010) 7080.41 (RCE-1) * 7980.79 (RCE-2)**	U-1- # U-II-##	7404.29	100.00	1.55	7,405.84	100	99.62	76.63	92.80	
*- RCE 1 cost Rs.7080.41 Crore. **- RCE-2cost Rs.7980.79Crore. # - Unit-I commercial operation from 28.12.2019. ## - Unit-II commercial operation from 10.02.2021.													
<p>➤ NTA-4:FGD package retender NIT issued on 08.12.2020, Bids opened on 12.03.2021 and TC meeting conducted for QR short listing.LOA expected in June 2021.</p> <p>➤ CERC has issued an interim tariff order on 29th January 2020 for the period from Commercial Operation Declaration (COD) of Unit-I and anticipated COD of Unit-II till 31st March 2021 based on the petition no. 219/GT/2019 filed by NLCIL. Interim Tariff order has been extended upto 31.03.2024 as per order no. 219/GT/2019 dated 26.03.202021.</p>													

Date of approval	Sanctioned Cost Rs. Crore	Scheduled date of completion	Anticipated Cost Rs. Crore	Anticipated date of completion	Cumulative Expenditure (upto31.03. 2021)Rs. Crore	Capex 2021-22 Rs. Crore		Cumulative (upto 30.04.2021) Rs. Crore	Cumulative Progress (%) (upto30.04.2021)				Remarks
						Target	Actual Provl (upto 30.04.2021)		Physical		Financial		
									Target /Schedule	Actual	Target /Schedule	Actual	
EXPANSION OF MINE-I 10.50 MTPA (AREA EXPANSION) & EXPANSION OF MINE-IA (FROM 3.0 MTPA TO 7.0 MTPA)													
30.04.2013	1458.17 Original 709.06 RCE (12.09.2016)	June 2015 / June2018	709.06	Put on Hold	484.65	10.00	0.16	484.81	68.96	68.92	68.96	68.37	--
➤ As approved by 492 nd board of NLCIL the project was put on hold as the Lignite demand is less and appropriate steps for Mine IA expansion will be taken based on increase in Lignite demand.													

Date of approval	Sanctioned Cost Rs. Crore	Scheduled date of completion	Anticipated Cost Rs. Crore	Anticipated date of completion	Cumulative Expenditure (upto 31.03.2021) Rs. Crore	Capex 2021-22 RsCrore		Cumulative (upto 30.04.2021) Rs.Crore	Cumulative Progress (%) (upto 30.04.2021)				Remarks
						Target	Actual Provl (upto 30.04.2021)		Physical		Financial		
									Target /Sched ule	Actual	Target	Actual	
RAJASTHAN MINE AND POWER PROJECTS HADLA LIGNITE MINE (1.9 MTPA)													
23.03.2015	522.45	Sept 2019	522.45	Put on hold	9.88	0.00	0.00	9.88	99.99	0.48	28.60	1.89	*
BARSINGSAR TPS EXTENSION (1X250 MW)													
23.03.2015	2112.59	Aug 2020	2112.59	Put on hold	86.85	0.00	0.00	86.85	98.86	0.01	25.81	4.11	*
BITHNOK LIGNITE MINE (2.25 MTPA)													
23.03.2015	513.63	Dec 2019	513.63	Put on hold	175.30	0.00	0.00	175.30	99.99	31.14	17.92	34.13	*
BITHNOK THERMAL POWER PROJECT (1X250 MW)													
23.03.2015	2196.30	Aug 2020	2196.30	Put on hold	140.80	0.00	0.00	140.80	98.86	1.77	24.37	6.41	*
* Rajasthan Projects are now on hold since June 2017.													
<p>➤ When the project activities were going on in full swing, through a letter dated 23.05.2017 informed that the DISCOMs of Rajasthan are not in a position to buy power. Hence, both the project activities are put “ON HOLD. After various correspondences, the RUVNL gave “In Principle “approval on 27.08.2018 for the resumption of project with certain preconditions. Meanwhile, the EPC contractor for these projects has raised certain extra claims for the resumption of the projects. Hon’ble Minister Parliamentary Affairs, Coal and Mines, GoI wrote to Hon’ble Chief Minister of Rajasthan requesting kind intervention to resume the project as PPA has already been signed for mutual benefit of Two Government agencies – One at the Center and other at the State of Rajasthan vide letter dated 04.05.2020. RUVNL vide letter dated 15.09.2020 requested NLCIL to furnish the latest quote for tariff for supply of power for the aforementioned projects. On 27.02.2020 NLCIL informed that the tentative tariff as of October 2020 are estimated as Rs. 5.88/kWhr for Bithnok project and Rs. 5.90 for BTPSE & the above tariff calculation has not considered any possible claim by EPC contractor. The matter is under discussion between NLCIL and GoR.</p>													

Date of approval	Sanctioned Cost Rs. Crore	Scheduled date of completion	Anticipated Cost Rs. Crore	Anticipated date of completion	Cumulative Expenditure upto 31.03.2021 Rs.Crore	Capex 2021-22 Rs. Crore		Cumulative (upto30.04.2021) Rs. Crore	Cumulative Progress (%) (upto30.04.2021)				Remarks
						Target	Actual Provl (upto 30.04.2021)		Physical		Financial		
									Target /Schedule	Actual	Target /Schedule	Actual	
GHATAMPUR THERMAL POWER PROJECT (3X660 MW), U.P													
27.07.2016	17237.80	U-I: Nov2020 U-II: May2021 U-III: Nov 2021	17237.80	U -I: Nov 2021 U -II: Mar 2022 U -III: Jul 2022	11,452.38	1,500.0	121.83	11,574.21	76.36	69.20	70.88	67.14	
➤ PPA has been already signed with UPPCL and MoP has allocated 1599.85 MW for UPPCL. Vide letter dated 11.2.2020, UPPCL was requested													

to sign the amended PPA agreement. For signing of balance PPA, UPERC conducted Two e-hearings on 21.07.2020 & 27.08.2020. Tariff calculation (Work sheet of tapered linkage from Talabira and PSCB with a tariff of Rs.4.59/Kwhr) sought by UPPCL for the purpose of cost benefit analysis was furnished by NUPPL on 12.10.2020 after discussing with Dir/ UPPCL on 09.10.2020 at his Lucknow Office. Cost benefit analysis for procuring power from GTPP for next 25 years has been submitted by UPPCL before UPERC on 29.01.2021. Letter requesting UPPCL for scheduling next e-hearing in Hon'ble UPERC for signing of balance PPA was sent on 13.04.2021. e-hearing held on 15th April 2021. UPERC has asked additional information from UPPCL. Next e-hearing is likely to be held in a month time.

- Unit-1 Boiler mock light-up successfully demonstrated on 26.03.2021.
- GA1: Unit-I, II & III Boiler & Boiler Common Auxiliaries erection activities are in progress. Unit-I, II & III ESP structure erection work is in progress.
- GA2: Unit- I, II & III TG structure erection works under progress and TG Auxiliaries works under progress.
- GA3: Construction activities in respect of switchyard, raw water reservoir, DM plant, NDCT, Fore Bay, CWPB CW channel sidewall, Coal Handling Plant, Ash Handling Plant, ESP and Chimney is in progress.
- GA4: Flue Gas Desulphurization: Cover for PG parameters opened on 31.01.2021. Price cover opened on 23.02.2021 and reverse auction conducted on 24/25.02.2021. Proposal to place LOA on M/s L&T has been placed in 60th board meeting of NUPPL held on 17.04.2021. Proposal deferred for further deliberation. Expected Date of LoA issue: May 2021.
- Revised COD dates for Unit-1 as 01-Nov-2021, Unit-2 as 31-Mar-2022 and for Unit-3 as 31-Jul-2022 has been approved in 57th Board of NUPPL held on 16.01.2021. Re-estimation on financial impact due to increase in IDC and overhead cost etc. is under progress.
- **Bridge linkage:** Ministry of Coal (MoC) has granted the bridge linkage of 0.5 MT for the year 2020-21 for GTPP. In line with the above CIL/BCCL had asked to sign MoU for 0.25 MT for Bridge Coal Linkage. NLCIL has requested Addl. Secretary, Gol, MoC vide letter dated 1st October 2020 that 3.0 MT of Coal Linkage for the FY 2020-21 and linkage for future requirement may also be granted for GTPP, Ghatampur, Kanpur dist. from nearest NCL Mines. The benefit of savings in coal transport shall be passed on to the beneficiaries/ distribution companies.
- NLCIL has requested Secretary, Gol, MoP vide letter dated 28th October 2020 to recommend allotment of 3.0 MT of coal under para B (i) of SHAKTI Policy dated 22.05.2017 for the FY 2021-22 for GTPP, Ghatampur, Kanpur Nagar District, UP from the nearest NCL mines. The benefit of cost savings in coal transport shall be passed on to the beneficiaries/ distribution companies. Long-term coal linkage from NCL, the total requirement of coal sent to MoP on 01.12.2020. Memorandum of understanding (MoU) for 0.25 Million tonnes supply of Coal under Bridge Linkage to GTPP from NCL has been signed on 22.01.2021. CEA, vide letter dt. 19.02.2021 has recommended Coal India Limited to supply 9.9 lakh tonnes coal to GTPP to facilitate commissioning activities, trial run & achieving COD etc. of 3 Nos. Units of NUPPL.
- CIL vide letter dt. 10.03.2021 has advised to NCL, Singrauli & BCCL, Dhanbad to supply 2.0 LT coal from NCL & 1.33 LT from BCCL for Start-Up, trial -Run & pre-commissioning activities for Unit-I of GTPP.

- Memorandum of understanding (MoU) for 0.20 Million tonnes supply of Coal (start up fuel) to GTPP from NCL has been signed on 27.03.2021.

Date of approval	Sanctioned Cost Rs. Crore	Scheduled date of completion	Anticipated Cost Rs. Crore	Anticipated date of completion	Cumulative Expenditure upto 31.03.2021 Rs.Crore	Capex 2021-22 Rs. Crore		Cumulative (upto30.04.2021) 1) Rs. Crore	Cumulative Progress (upto30.04.2021)				Remarks
						Target	Actual Provl (upto30.04.2021)		Physical		Financial		
									Target /Schedule	Actual	Target /Schedule	Actual	
PACHWARA SOUTH COAL OCP (9.0 MTPA), JHARKHAND													
04.05.2018	1,795.01	Sept 2028	1,795.01	Sept 2028*	34.62	100.00	0.26	34.88	@	@		1.94	

* Attaining full rated capacity.@ Project under MDO mode work under progress.

- Final Geological Report Approved by MoC on 07th September 2020.
- Environmental Clearance: The Terms of Reference (ToR) has been received in the favour of PSCB on 05.11.2020 by MOEF&CC. Draft EMP/EIA report submitted to JSPCB, Ranchi on 19.03.2021 for Public Hearing.
- AAP for Pachwara South Coal Block: MoC approved AAP of Rs. 3582.61 Lakhs on 14.10.2020.
- Mining Plan & Mine Closure Plan: Mining Plan and Mine closure plan of PSCB approved by MoC on 11th Nov 2020.
- Social Impact Assessment (SIA) study: A tripartite meeting was held on 21.01.2021 at Dumka to review draft SIA baseline report.
- Mine Feasibility Report (FR): Preparation of FR including rapid loading system is under process.
- DFO, Dumka has given NoC on 07.12.2020 for Pachwara project by certifying that the project does not fall under corridors of National Park & Wild life sanctuary.
- Application for "No Objection Certificate" under FRA, 2006 in respect of PSCB submitted to DC, Dumka on 20.01.2021.
- Gazette Notification under Sec 9(1) of CBA (A&D) Act, 1957 (Declaration of acquisition of land) issued by MoC on 16.03.2021. Application for issuing Gazette notification u/s 11(1) of CBA (A&D) Act, 1957 in respect of PSCB submitted to MoC on 26.03.2021.

Date of approval	Sanctioned Cost Rs. Crore	Scheduled date of completion	Anticipated Cost Rs. Crore	Anticipated date of completion	Cumulative Expenditure upto31.03.2021 1 Rs. Crore	Capex 2020-21 Rs. Crore		Cumulative (upto30.04.2021) Rs. Crore	Cumulative Progress (%) (upto30.04.2021)			
									Physical		Financial	
						Target	Actual Provl (upto30.04.2021)		Target /Schedule	Actual	Target /Schedule	Actual
TALABIRA II & III COAL OC MINE (20.0 MTPA), ODISHA:												
20.07.2017	2,401.07	18 months from date of LOA – 06.02.18	2,401.07	Jan 2027 *	854.37	200.00	7.00	861.37		87.00		35.87

* Attaining full rated capacity.

- Talabira Mine operation commenced on 11th December 2019. Coal Production commenced on 26th April 2020.
- Land compensation to PAPs started on 24th July 2019. Disbursement of compensation for Tenancy Land till 30th April 2021, Payment was made for 254.77 Acres and total value of the cheques disbursed was Rs.94.92 Crore.

- Acquisition of land for approach road to mines: Permission for registration of 6khata of SC/ ST land has been obtained and Registration of 7khata out of 9 khata of SC/ST land has been completed.
- **Sale of Excess Coal Through MCL:** Dispatch of Coal commenced on 16th November 2020. 5th Auction of 1.58 LT of excess Coal directly by NLCIL has been conducted on 12.03.2021. Bid received for 1.58 LT Coal. Cumulative 9.48 LT of Coal has been dispatched till 30.04.2021.
- **Railway Siding:** Package-I: LoA has been issued to M/s Triveni Engicons Pvt Ltd on 13th March 2020. Package-II: LoA has been issued to M/s SMS Ltd on 5th June 2020. Govt. land of 1.77 km in Hirma & Malda Village handed over to M/s SMS Ltd. (Package II) on 10.08.2020. D.G.P.S alignment for package II track alignment conducted upto 14th August 2020. Field line demarcation for dead end completed by M/s RITES on 04th September 2020. Ground levelling work started on 18.01.2021 in Govt. land and acquired private Land for Railway siding. First Consignment of Rail received at site on 15.02.2021. Total 32 nos. (1091 MT) of Rail Consignment received at site.
- DCAC meeting was conducted on 28.08.2020 for acquisition of tenancy land of 23.47 acre in Jharsuguda District for Railway siding. Proceeding of DCAC meeting regarding acquisition of tenancy land outside lease boundary has been issued on 14th October 2020. Consent to Establish (CTE) has been granted by SPCB, Bhubaneswar, Govt. of Odisha on 02.11.2020. Registration of 11 nos. of khata out of 47 khata has been completed till 15th Dec 2020.

7.0 PROJECTS IN PIPELINE.

Date of approval	Anticipate d Cost Rs. Crore	Scheduled date of completion	Anticipated Cost RsCrore	Anticipated date of completion	Cumulative Expenditure upto31.03.2 021 Rs. Crore	Capex 2021-22 Rs. Crore		Cumulativ e (upto30.04.202 1) Rs. Crore	Cumulative Progress (%) (upto30.04.2021)			
									Physical		Financial	
						Target /Schedule	Actual		Target /Schedule	Actual		
2400 MW PITHEAD COAL BASED TPP AT ODISHA (NTTPP)												
25.01.2017	19422.44	Unit-I 5/2023 Unit-II 11/2023 Unit-III 05/2024	19422.44	Unit-I 4/2026 Unit-II 10/2026 Unit-III 04/2027	32.13	0.00	0.00	32.13	--	--	--	0.17

- Ministry of Revenue, Govt. of Odisha issued Section 4 (1) Notification for acquisition of land in the Jharsuguda District on 8th March 2019 and in the Sambalpur District, on 30th May 2019.
- Vide 4th Re-constituted EAC MoM dated 04.12.2020, EAC committee recommended for grant of Environmental clearance for the NTTPP (phase-I- 3 X 800MW).
- DFO/Jharsuguda informed to RO/Sambalpur that, “applied area for construction of 3X800 MW NTTPP is not falling in any eco-sensitive zone, national park or wildlife sanctuary. No archaeological/heritage site/defence establishment or any other important monument is located in the area and also the proposed area is more than 10 km radius from Debrigarh wildlife sanctuary”.
- PCCF (WL) & CWW, Odisha was informed that, as schedule 1 fauna is present in the area, establishment of NTTPP may be considered with Stipulation of site specific wildlife conservation plan duly funded by the user agency.

- Approval for allocation of power for 2000 MW (Tamilnadu-1500MW, Kerala-400MW & Puducherry-100MW) of Phase-I (3 x 800 MW) from MoP was received on 19th November 2020. In addition, stating the allocation of the remaining 400 MW to the State of Odisha would be considered separately on receipt of detailed justification from Government of Odisha (Procurer) and request from NLC for grant of exemption under the present Tariff Policy, 2016.
- Accordingly, The Principal Secretary (Energy), Govt of Odisha was requested vide Ir. dated 24.11.2020 to address MoP for allocation of Power to State of Odisha considering the benefits of this project and NLCIL will also address MoP for grant of exemption under present tariff policy-2016.
- Reminder letters seeking fresh consent from DISCOMs of Tamil Nadu, Kerala, Puducherry and Odisha (GRIDCO Ltd) for Talabira Thermal Power Project were again sent on 16.12.2020. A meeting with GRIDCO officials regarding power evacuation system and PPA for 400 MW was held on 09.04.2021
- Kerala State Electricity Board issued fresh consent letter for NTPP (3x800 MW) PPA on 22.01.2021 for a capacity of 400 MW.
- Environmental Clearance (EC) obtained for NTPP (Phase-I – 3x800 MW) on 02.02.2021.
- TANGEDCO issued fresh consent letter for NTPP (3x800 MW) PPA on 09.02.2021 for a capacity of 1500 MW.

Steam Generator & Auxiliaries Package (NTT-1) & Steam Turbine Generator & Auxiliaries Package (NTT-2):

- NLCIL board in its 495th meeting held on 08.11.2019 has accorded approval for deferring the multi package tenders (comprising of all the four major works viz., SG, STG, BOP and FGD) and to go in for Single EPC method through EOI method.
- Infrastructure work and single package engineering, Procurement & construction (EPC) NIT issued on 18th November 2020 with tender opening was scheduled on 8th January 2021. Based on the requests from the prospective bidders, Tender Opening Date has been revised to 15.05.2021. Expected date of LOA: August 2021.
- Board of Directors in their 504th meeting held on 07th January 2021 has accorded the approval for enhancing AAP from Rs.25.11 Cr. to Rs.1154.27 Cr. to take up the pre-project activities for NTPP with the condition that “expenditure shall be incurred in a phased manner synchronizing with the progress of the project activities and further resolved to authorize Dir(Power) to accord approval for the specific expenditures on a case to case basis, depending upon the progress of the project”.

9.3. PROGRESS OF MAJOR ONGOING PROJECTS

There are 14 Ongoing Projects in SCCL as on 30.04.2021 costing Rs. 20.00 Cr. and above. The Progress in construction of these Projects is furnished hereunder:

Sl. No.	Name of the Project	Sanctioned Capital (Rs. Cr.)	Capacity (MTPA)
1	Srirampur OCP - II Expn.	272.73	3.50
2	RCE of Indaram OCP	349.28	1.20
3	RCE of MNG OCP	415.70	1.50
4	RCE of Kondapuram UG (Outsourcing)	56.88	0.70
5	RCE of Ramagundam OCP - II Extn.	489.62	4.00
6	RCE of Kistaram OCP	164.04	2.00
7	RCE of JVR OCP – II	473.22	10.00
8	Kasipet - 2 Incline	60.18	0.47
9	RCE of KK OCP	384.32	1.75
10	RCE of KTK OCP - II	442.42	1.25
11	KTK OCP - III	413.84	2.50
12	Godavarikhani Coal Mine (No.2 & 2A and No. 5)	438.98	3.00
13	Naini Coal Mine	494.30	10.00
14	Venkatesh Khani Coal Mine	484.51	5.30

1. SRIRAMPUR OCP-II (Expansion) :

A) Date of sanction	: FR : 20.10.2004 & RFR : 06.01.2006 : RCE : 16.10.2015 & RCE : 04.11.2016
B) Financial Progress:	
1) Sanctioned capital	: RFR : Rs. 88.47 Cr. & RCE - I : Rs. 322.98 Cr. : RCE - II : Rs. 272.73 Cr.
2) Total Capital Outlay	: Rs. 384.33 Cr.
3) Cumulative expenditure up to Apr, 2021	: Rs. 153.75 Cr. (Provisional)
4) Now anticipated cost	: Rs. 272.73 Cr.
5) Status of RCE/RFR	: RCE - II approved on 04.11.2016
C) Physical Progress:	
1) Ultimate Capacity	: FR: 1.50 MTPA, RFR : 2.50 MT PA & RCE: 3.50 MTPA
2) Anticipated year of completion	: 2021-22
3) Production in 2021-22 up to Apr, 2021	: 0.13 MT
4) Overburden removal in 2021-22 up to Apr, 2021	: 2.46 M Cum
D) General Status in brief as on 30.04.2021:	
1. Forest Land (100.82 Ha):	Obtained on 10.07.2009.
2. Forest Land (162.45 Ha):	On 27.10.'17, application uploaded. On 27.01.'21, FAC conducted & issued Stage-1 on 12.03.'21.
3. Public Hearing & EC:	ToR obtained on 23.01.2018 @ 3.50 MTPA, Public Hearing conducted on 19.09.2018. FL stage-1 obtained on 12.03.2021. Form-II to be submitted in May'21 for obtaining EC.
4. Diversion of Private Land (50.21 Ha):	Requisition submitted during Oct, 2017. Peg marking completed & survey to be taken up. On 30.03.2021, requested DC, MNCL to expedite the LA process.
5. Non-Forest Land acquisition (Thallapalli, Singapuram, Guthedarpalli & Ramaraopet Villages):	

a.	Thallapalli (Ac. 60-08½gts) for dump area: PN published on 17.07.2019. PD published on 19.03.2020. Award to be passed. On 24.03.2021, requested RDO, MNCL to expedite the LA process.
b.	Singapuram: Ac. 505-12gts (Agricultural Patta Land) for quarry area, Ac. 131-16gts (Structured Patta Land) for dump area Ac. 312-03gts (Assigned Land) for dump area: Completed
c.	Ramaraopet & Guthedarpalli for quarry area: Ac. 49-07gts (Assigned land): Completed.
d.	NF land (48.92 Ha) for expansion project: Requisition is to be submitted.
e.	R&R: Thallapalli-800, Singapur-974, Guthedarpalli-136 Total PDFs =1910
f.	R&R of Thallapalli village (800 PDF): 798/800 plots allotted. Allotment of remaining 2 plots is in active stage.
g.	R&R of Singapur & Guthedharpalli villages (974 PDF in Singapur & 136 PDF in Guthedarpalli): Singapur: 934 plots allotted. Issue of balance 40 plots is under process. Guthedarpalli: 136 - plots allotted.
h.	R&R Dubbapalli (120 PDF): Action is to be initiated (required in 5 th year).
6.	Indoor & outdoor sub-station: Completed.
7.	Bifurcation of SRP 3 & 3A U/G workings beyond 100m depth line: Development towards project boundary stopped & final extraction will be completed before commencement of OC works.
8.	Drilling of 6 Nos. large dia. (24") boreholes: Completed & two 300 HP pumps working.
9.	Shifting of 33Kv line: Completed during Jan'19.
10.	2-bay maintenance shed: Completed by Jan'20.
11.	CHP: All works completed & PWWLS commissioned on 13.01.2020.
12.	Procurement of in - Pit Crushers & others: Crushers supplied. Erection commenced from 23.09.2019 & likely to complete by Jun'21.
13.	Plough Feeders (2 Nos.): Supplied on 08.07.2019 & erection completed by Nov'19.
14.	Rly. Line to STPP (21.175Km): Single track line completed. 1 st coal load taken on 01.08.2018.
15.	OBR: OBR commenced from 01.06.2013.
16.	Coal Production: Production from the projects has started from 1.08.2013 1. 2013-14 = 1.45 MT 2. 2014-15 = 2.54MT 3. 2015-16 = 2.70 MT 4. 2016-17 = 2.03 MT 5. 2017-18 = 2.57 MT 6. 2018-19 = 2.98 MT 7. 2019-20 = 2.97 MT 8. 2020-21 = 2.09 MT

2. INDARAM OCP PROJECT:

A) Date of sanction	: 04.07.2011 & RCE: 19.8.2017
B) Financial Progress:	
1) Sanctioned capital	: Rs. 162.76 Cr. & RCE: Rs. 349.28 Cr.
2) Total Capital Outlay	Rs. 358.43 Cr.
3) Cumulative expenditure up to Apr, 21	: Rs. 280.68 Cr. (Provisional)
4) Now anticipated cost	: Rs. 349.28 Cr.
5) Status of RCE	: RCE approved on 19.8.2017.
C) Physical Progress:	
1) Ultimate Capacity	: 1.2 MTPA
2) Anticipated year of completion	: 2021-22
3) Production in 2021-22 up to Apr, 2021	: 0.07 MT

	4) Overburden removal in 2021-22 up to Apr, 2021	: 1.68 M Cum
D) General Status in brief as on 30.04.2021:		
Project was held up due to Villagers & Political leaders are opposing the OC project. RCE is approved by Board on 19.08.2017, with changed parameters as socio-political atmosphere is improved. Project grounded during 2020-21.		
1.	Mining plan: Approved on 17.09.2017. Integrated (IK-OC & IK-1A) MP was approved by MoC on 23.09.2019.	
2.	Environmental clearance: Obtained for 1.50 MTPA (Peak) on 31.07.2008. Revised EC for 2.00 MTPA to be obtained.	
3.	Private Land-Ac. 1048-38gts: Requisition submitted on 02.11.2016. SD & Enjoyment survey completed by Sep'19. Valuation of Trees & Structures completed. On 28.12.2019, finalised rate/Acre. PD published on 23.12.2019. Fund of Rs. 232.89 Cr. deposited on 17.02.2020. Indaram consent award passed to an extent of Ac. 453-00½gts. Tekumatla consent award passed to an extent of Ac. 313-10½gts. Kachanpalli consent award passed to an extent of Ac. 40-21½gts. Total Consent award passed to an extent of Ac. 806-32½gts. Rs. 186.30 Cr. disbursed. For remaining Ac.224-23½gts.General Award preparation is under process. Notices are being served to the Pattedars for General Award.	
4.	Diversion of 400Kv OHT lines (Power grid): Funds deposited on 21.08.2020. Work commenced from 21.12.2020. Completion of OHT line shifting is expected by May'21.	
5.	Diversion of 400Kv OHT lines (TS Transco): Completed.	
6.	Bridge on Highway: Work for construction of RUB commenced from 23.11.2019 & traffic diverted from 17.02.2020. Piling work completed. Raft for Bridge & Ramp side wall construction work is under progress.	
7.	Embankment around Quarry. 2.70Km length bund, 0.6m depth bottom soil removed and 1.5m depth key trench completed along the Godavari River. Bund raised upto 837.00m RL from chainage 3200m to 4900m all along Godavari. Bund raised upto 835.00m RL from chainage 3200m to 2200m all along Godavari. Note approved (Stone pitching, turfing, rip rap, drains and WBM road etc.) to take up works by Area civil department.	
8.	Drilling of large dia. BHs: Work awarded on 09.08.2019. One Borehole completed, pump erected & commissioned.	
9.	CHP (PWTLs): Erection is under progress. Mean while Mobile Crusher will meet the requirement.	
10.	P&M: Procurement is under progress.	
11.	Commencement of OBR: OBR commenced from 15.05.2020.	
12.	Commencement of Production: Commenced from 29.10.2020 & achieved 1.00 MT during 2020-21.	

3. RCE OF MANUGURU OPENCAST PROJECT:

A) Date of sanction	: FR: 03.01.2008, RFR: 10.11.2012 & RCE: 13.05.2015
B) Financial Progress:	
1) Sanctioned capital	: FR: Rs. 431.45 Cr., RCE: Rs. 415.70 Cr. (Excluding WDV of existing facilities & actual expenditure at the time of RCE).
2) Total Capital Outlay	Rs. 380.73 Cr.
3) Cumulative expenditure up to Apr, 21	: Rs. 193.76 Cr. (Provisional)
4) Now anticipated cost(RCE)	: Rs. 486.27 Cr.
5) Status of RCE	: Approved by Board on 13.5.2015
C) Physical Progress:	

	1) Ultimate Capacity	: 1.80 MTPA
	2) Anticipated year of completion	: 2021-22
	3) Production in 2021-22 up to Apr, 21	: 0.44 MT
	4) Overburden removal in 2021-22 up to Apr, 2021	: 1.98 M Cum
D) General Status in brief as on 30.04.2021 :		
1. Forest Land (33.58 Ha): Final approval obtained on 3.5.2016.		
2. EC: Obtained on 06.12.2019 @ 1.80 MTPA.		
3. Non Forest land: Completed Possession taken		
4. Govt. land (AC.28- 38gts): Collector, KMM issued proceedings on 10.10.2016.		
5. Additional Mining Lease (373.90 Ha.): State Govt. granted Mining Lease on 06.02.2015.		
6. R&R Tribal (181 PDF): Completed.		
7. R&R Non Tribal (1063 PDF) : Completed		
8. Flood Protection Bund: Work completed by Oct'19.		
9. OBR: OB removal commenced from Jan, 2017.		
10. Coal Production: Production commenced from Feb, 2017		
	i) 2016-17=0.45 MT	
	ii) 2017-18=1.50 MT	
	iii) 2018-19=1.50 MT	
	iv) 2019-20=1.80 MT	
	v) 2020-21=1.80 MT	
Note: Project completion Report is under preparation.		

4. RCE OF KONDAPURAM UNDERGROUND MINE:

	A) Date of sanction/ RCE	: 19.12.2008/ 11.03.2016
	B) Financial Progress:	
	1) Sanctioned capital(up to construction period) RCE	: Rs. 293.11 Cr. (Department option) : Rs. 56.88 Cr.(Outsourcing option)
	2) Total Capital Outlay	: Rs. 447.21 Cr.
	3) Cumulative expenditure up to Apr, 21	: Rs. 176.84 Cr. (Provisional)
	4) Now anticipated cost	: Rs. 293.11 Cr. (Department option) : Rs. 56.88 Cr. (Outsourcing option)
	5) Status of RCE	: Approved on 11.03.2016
	C) Physical Progress:	
	1) Ultimate Capacity	: 0.70 MTPA
	2) Anticipated year of completion	: 2021-22
	3) Production realization in 2021-22 up to Apr, 2021	: 0.01 MT
	D) General Status in brief as on 30.04.2021:	
1. Mining plan: Approved on 02.11.2018.		
2. Environmental clearance: Obtained on 05.03.2010 @ 0.54 MTPA & for obtaining 0.92 MTPA, EPH is to be conducted.		
3. Forest Land: 477.03 Ha (UG rights): Obtained on 18.5.2015.		
4. Forest land: 10.50 Ha (Surface rights): Obtained on 06.01.2016.		
5. Drivage of Punch entries: Completed.		
6. Power Supply: Power line and Substation (33/3.3KV): Completed.		
7. Installation of Conveyors: Gear Head (55Kw) and cross belt (22Kw): Completed.		
8. P&M: LHDs (2 Nos.) received and commissioned. Diverted to GDK 1&3 and Adriyala (one each).		
9. Approach road to Mine entries: Work commenced from 16.08.2019 & completed.		
10. Drivage of Inclines: Open excavation & arching: Completed.		

11.	Tunnels: Work commenced from 09.03.2019 & completed @ 88m by Nov'20. But full coal face is not exposed due to weathering of the seam. 8 Nos. of exploratory BHs were drilled & found 3 to 4m up throw fault was encountered along the sections of Haulage & Belt inclines, requires further tunneling to intersect the coal seam. 15m further drivage is approved by Competent Authority & progressed about 15m in each tunnel during Apr'21.
12.	Commencement of Production: Production through punch entries commenced from 11.07.2015.
13.	Infrastructure: Agent/Manager office, work awarded & to be taken up. Other buildings completed.
14.	In-door and outdoor Sub –Station: Completed.
15.	CM: LOI issued on 11.08.2018. CM operations commenced from 30.10.2019 at punch entry district.
	The project was delayed due to delay in Diversion of forest land.

5. RCE of RAMAGUNDAM OC-II EXTENSION PROJECT:

A) Date of sanction	: FR: 30.12.2009 & RCE: 16.11.2015
B) Financial Progress:	
1) Sanctioned capital	: FR: Rs. 418.97 Cr.; RCE: Rs. 489.62 (Excluding WDV of existing facilities for Rs. 155.43 Cr. & actual exp. of Rs. 57.98 Cr.)
2) Total Capital Outlay	: FR: Rs. 896.32 Cr. & RCE: Rs. 1200.04 Cr.
3) Cumulative expenditure up to Apr, 2021	: Rs. 416.07 Cr. (Provisional)
4) Now anticipated cost	: Rs. 489.62 Cr.
5) Status of RCE	: RCE is approved on 16.10.2015.
C) Physical Progress:	
1) Ultimate Capacity	: 4.00 MTPA
2) Anticipated year of completion	: 2022-23.
3) Production in 2021-22 up to Apr, 2021	: 0.21 MT
4) Overburden removal in 2021-22 up to Apr, 2021	: 2.98 M Cum
D) General Status in brief as on 30.04.2021:	
1. Forest Land (333.48Ha.): Completed.	
2. EC: Obtained for 4.50 MTPA (peak) on 27.04.2010.	
3. Non Forest land (1525-47 Ha): Land acquired - 1102.42 Ha. Land to be acquired - 423.05 Ha.	
4. R&R: Rachapalli-572, Akkepalli-780, Ladnapur-721, Vakeelpalli-202, Adivarampet-200, Budavarampet-800: Total=3275. Rachapalli Ladnapur & Akkepalli villages: SES was conducted for Rachapalli, Ladnapur & Akkepalli villages and draft SES published. SES for Akkapalli is completed. R&R center for Rachapalli PDF: Land for R&R Center for Rachapalli village is identified in Govt. & Govt. assigned land Ac. 283-00gts at Bittupalli. Development completed in phase-I for 734 plots. Plots allotment for Rachapally PDF (209) is in progress. Development in Phase-II for Akkepally PDF is under progress.	
5. R&R Center for Ladnapur PDF: R&R site identified at Centenary Colony. Development works are under progress.	
6. Adivarampet & Budavarampet villages: SES to be conducted for Adivarampet & Budavarampet villages. But villagers are not co-operating for enumeration and SES. However this land is required at later stages of the project.	
7. R&R Development at Bittupally: Development of 734 plots for Rachapally PDF completed and allotment of plots (209) is in process. Development in Phase-II for Akkepally PDF: Development works are under progress.	
8. Diversion of L-6 Canal (Phase-I): Diversion completed & water diverted.	

9. Manthani Road Diversion:	Diversion will be taken up after land acquisition and shifting of Ladnapur Village.
10. OBR:	OB removal is in progress.
11. Coal Production:	Coal production commenced from 01.01.2010.
	1. 2010-11=3.25 MT
	2. 2011-12=2.14 MT
	3. 2012-13=1.05 MT
	4. 2013-14=0.73 MT
	5. 2014-15=0.70 MT
	6. 2015-16=1.50 MT
	7. 2016-17=1.86 MT
	8. 2017-18=1.93 MT
	9. 2018-19=2.16 MT
	10. 2019-20=2.37 MT
	11. 2020-21=2.52 MT
In view of abnormal increase in cost of land and R&R, RCE is approved on 16.10.2015.	

6. **RCE of KISTARAM OCP:**

A) Date of sanction	: FR : 01.11.2010 & RCE: 04.03.2017
B) Financial Progress:	
1) Sanctioned capital	: Rs. 242.29 Cr. & RCE: Rs. 164.04 Cr.
2) Total Capital Outlay	: Rs. 143.90 Cr.; RCE: Rs. 360.33 Cr.
2) Cumulative expenditure up to Apr, 2021	: Rs. 33.47 Cr. (Provisional, after REC of Rs. - 124.57 Cr.)
4) Now anticipated cost	: Rs. 164.04 Cr.
5) Status of RCE	: RCE approved on : 04.03.2017
C) Physical Progress:	
1) Ultimate Capacity	: 2.00 MTPA
2) Anticipated year of completion	: 2021-22
3) Production in 2021-22 up to Apr, 2021	: 0.15 T
4) Overburden removal in 2021-22 up to Apr, 2021	: 1.28 M Cum
<u>D) General Status in brief as on 30.04.2021:</u>	
1. Mining plan: Obtained on 21.03.2014.	
2. Mining lease: Prior approval given by MoC on 21.03.2014. State Govt. issued GO on 05.07.2019.	
3. Environment clearance: Obtained for 2.00 MTPA on 18.06.2019. CFE obtained on 20.07.2019. CFO obtained on 18.10.2019.	
4. Forest Land (285.44Ha): State Govt. issued GO on 20.05.2019.	
5. Non - Forest Land Requisitioned: Private land (Ac. 91-29gts): PN published on 18.12.2017. Possession taken for Ac. 85-16gts as on 31.01.2021. Ac. 06-13gts-Possession will be taken after shifting PDF to R&R centre.	
6. Govt. land (Ac. 106-35gts+ Ac. 79-30gts.): Requisition submitted on 27.03.2015. SD & enjoyment survey completed. Possession taken for Ac. 152-12¼gts as on 31.01.2021. Tank/Road/Sikam Land (free from encroachment) - Ac. 20-05¾gts. Ac. 5-11gts, Possession will be taken after shifting of PDF to R&R centre, which is under development. Ac. 18-20gts - Balance land (disputed land). SDC inspected site on 17.03.2020. PN published on 07.07.2020. Award enquiry completed on 2.09.2020. On 28.12.2020, amount disbursed to land owners.	

7. R&R details (160 PDF):	R&R site is identified at Cherukupalli. SES completed on 01.02.2018. Draft R & R Plan is to be prepared and to be published. PN published on 22.10.2018. Award enquiry completed. DLNC Meeting held on 16.04.2019 at O/o Collector, KMM & compensation finalised @ Rs. 16.50 Lakh/Acre for Ac. 14.05gts. On 15.05.2019, demand received from Collector for Rs. 2.43 Cr. & money disbursed to land owners on 11.06.2019. Possession of land taken on 04.07.2019 & tenders awarded for development works. Site leveling work is in progress. Draft R&R plan published in the village on 01.09.2020. Gramasabha conducted on 18.09.2020. R&R plan approved on 13.11.2020. Development works are in progress.
8. Power supply arrangement:	Rs. 48.00 Lakh deposited to TSNPDCL & temporary power charged on 06.01.2020. Rs. 4.50 Cr. deposited on 14.10.2019 for dedicated power supply from Penuballi 33Kv Substation to JVR OCPs, Kistaram OCP and SCCL Quarters. Contract awarded by TSNPDCL & Work is under progress.
9. OBR:	OBR Commenced from 18.10.2019.
10. Coal Production:	Commenced from 15.02.2020 & achieved is; 2019-20 - 0.19 MT 2020-21 - 1.38 MT

7. RCE of JVR OCP II:

A) Date of sanction	: FR : 04.07.2011 & RCE: 26.08.2016; RCE II: 13.03.2019
B) Financial Progress:	
1) Sanctioned capital	: Rs. 437.51 Cr. & Rs. 473.22 Cr. (RCE II)
2) Total Capital Outlay	: Rs. 1261.65 Cr.
2) Cumulative expenditure up to Apr, 2021	: Rs. 79.04 (Provisional, after REC of Rs. -789.33 Cr.)
4) Now anticipated cost	: Rs. 447.06 Cr.
5) Status of RCE/RFR	: Approved on 26.08.2016
C) Physical Progress:	
1) Ultimate Capacity	: 10.00 MTPA
2) Anticipated year of completion	: 2021-22
3) Production in 2021-22 up to Apr, 2021	: 0.52 MT
4) Overburden removal in 2021-22 upto Apr, 2021	: 2.70 M Cum
D) General Status in brief as on 30.04.2021:	
1. Mining Plan:	Comprehensive MP for 10 MT approved on 11.02.2019.
2. Environment Clearance:	Obtained for 5.00 MTPA (peak) on 28.03.2010. EAC for 10 MTPA EC held on 22.03.2021.
3. Mining lease:	Obtained on 03.11.2016.
4. Forest Land (776.20Ha):	MoEF issued Stage-I on 12.09.2016 & Stage II on 30.5.2017. State Govt. issued G.O on 07.07.2017. Completed
5. Non Forest land (686.80 Ha as per RCE):	Private Land - 563.45 Ha & Govt. land – 123.35 Ha. Acquisition of Private land (Ac. 94-07gts. of Kistaram (dump yard): Completed.
6. Acquisition of Private land (Ac. 489-04 gts. of Kommepalli):	09 land owners filed Writ

	<p>Petition No. 21315/ 2017 on 20.06.2017 in Hon'ble High Court, Hyd. challenging the Awards passed by Lok Adalat, KMM in respect of certain Survey Numbers. Hon'ble High Court issued orders to maintain Status-quo. On 28.11.2017, Hon'ble Prl. Dist. & Sessions Judge, KMM referred the case to Hon'ble High Court, Hyd. to pass appropriate orders on the Award. On 30.04.2018, Hon'ble high Court directed Dist. Judge to disburse amounts by 30.06.2018. During trail hearing on 30.07.2018, Dist. Judge informed that compensation would be disbursed for about Ac.309-00gts by 16.08.2018 on filing of individual Cheque Petitions. On 31.07.2018, GM, Kgm & GM(Est) met Dist. Judge, KMM for disbursement of payments. On 31.8.2018, Dist. Judge, KMM instructed the concerned to withdraw the amount for disbursement to the land owners for an extent of Ac. 235-00 gts, who got Hon'ble High Court Orders (99 land owners). Further, for Ac. 110-00gts, land owners have to approach the High Court to get the similar orders for compensation (28 land owners). On 30.09.2018 individual writ petitions' submitted at Dist. Judge, KMM by land owners for an extent of Ac. 124-00gts. Dist. Judge, KMM disbursed compensation during 2nd week of Jan'19 for an extent of Ac. 238-00gts of Patta Land of Kommepalli village. Balance Ac. 63-00gts, the land owners are submitting individual Cheque Petitions in the Dist. Court. For remaining extent of Ac. 125-10gts Patta Land, award enquiry is under process at Dist. Judge KMM & expected to be finalized by Jun'21.</p>
7.	<p>Kommepalli Village Site (Ac 23-07gts) R&R: Completed.</p>
8.	<p>Govt. land (Ac 304-27gts): Ac. 260-26gts land is under possession of SCCL. Remaining land is required in subsequent years at different stages of the Project.</p>
9.	<p>R&R details (229 PDF) (Kommepalli): R&R approved for 229 PDF by Commissioner, R&R. RDO, Kallur, disbursed the R&R entitlements to the PDF of Kommepalli on 28.08.2018 to 30.08.2018. On 02.10.2018, RDO, Kallur handed over house plots to PDF. Development of R&R centre completed & PDF are constructing houses at R&R centre.</p>
10.	<p>CHP: Construction of conventional CHP: Work commenced from 18.04.2019. One stream is ready out of 3 streams & balance works are under progress. Hiring of mobile crushers: PO released on 09.07.2019. Machine commissioned on 11.11.2019.</p>
11.	<p>Construction of CHP under EPC mode: PO released on 19.04.2019. The Firm commenced work from 01.11.'19. Scheduled completion is 18 months from Zero date i.e. from 01.11.2019 to 30.04.2021.</p>
12.	<p>Railway line between Bhadrachalam Road to Sattupalli (53.20Km &Rs. 704.31 Cr.): SCCL deposited Rs. 456.38 Cr. to SCR. Possession of land was handed over in 14/14 villages (824 Acres/864 Acres handed over) to Railways. Stage II approval accorded by MoEF & CC, Chennai on 20.11.2019 in Mandalapadu village for diversion of 4.3762 Ha (Ac. 10-32gts) from Km. 49.10 to Km. 49.70 FL processed by Railway authorities & taken over possession of land. Earth work of Embankment started in two stretches, i.e., between Ch. 0.00 Km to Ch. 25.00Km (Aprx. 21.50 L Cum) & Ch. 25.00Km to 53.70Km (Aprx. 23.00 L Cum) and work is in progress. On 30.10.2018, tender awarded for 10 Nos. major bridges (6 Nos. completed, 3 Nos. are in progress and 1 No. is yet to commence). 34 other minor bridges-24 Nos. completed & 4 Nos. are under progress. 2 ROB's across National and State Highway- Work is in progress. 4/4 Relay, Battery, Generator rooms and Station buildings –work is in progress.</p>
13.	<p>OBR: OB removal commenced from 1st Sept, 2017.</p>
14.	<p>Coal Production: Production commenced from 31.10.2017.</p> <ol style="list-style-type: none"> 1. 2017-18 = 0.75 MT 2. 2018-19 = 2.96 MT 3. 2019-20 = 4.83 MT 4. 2020-21 = 4.76 MT

8. KASIPET – 2 Incline:

A) Date of sanction	: FR : 04.07.2011
B) Financial Progress:	
1) Sanctioned capital	: Rs. 60.18 Cr.
2) Total Capital Outlay	: Rs. 57.86 Cr.
2) Cumulative expenditure up to Apr, 21	: Rs. 53.64 Cr. (Provisional)
4) Now anticipated cost	: Rs. 60.18 Cr.
5) Status of RCE/RFR	: Not required.
C) Physical Progress:	
1) Ultimate Capacity	: 0.47 MTPA
2) Anticipated year of completion	: 2021-22
3) Production in 2021-22 up to Apr, 2021	: 0.005 MT
D) General Status in brief as on 30.04.2021:	
1. Mining Plan:	Approved on 01.01.2015.
2. Environment Clearance:	Obtained for 0.47 MTPA on 11.05.2015.
3. NF Land required (33.08 Ha.).	Completed.
4. Tunnels: Completed @ 211.30m & 226.60m.	Coal production commenced from 23.01.2019.
5. Power supply – Completed	
6. Surface infrastructures: Completed by Aug'19.	
7. Surface Bunker:	Work commenced from 11.12.2017 & completed.
8. Sinking of Air Shaft (61m):	Completed in Apr'21.
9. Construction of Fan house & erection of Fan:	Construction of fan house work taken up during Apr'21.
10. Stowing Plant:	Action to be initiated at later stages.
11. Road Diversion: Completed.	
12. Coal production:	Coal production commenced from 23.01.2019 & achieved is;
1. 2019-20 - 0.043 MT	
2. 2020-21 - 0.05 MT.	

9. RCE OF KK OCP:

A) Date of sanction FR/ RCE	: FR/RCE : 24.07.2012/ 11.03.2016
B) Financial Progress:	
1) Sanctioned capital FR/RCE	: Rs. 417.33 Cr./ Rs. 384.32 Cr.
2) Total Capital Outlay	: Rs. 493.18 Cr.
2) Cumulative expenditure up to Apr, 2021	: Rs. 134.80 Cr. (Provisional)
4) Now anticipated cost	: Rs. 384.32 Cr.
5) Status of RCE/RFR	: RCE approved on 11.03.2016.
C) Physical Progress:	
1) Ultimate Capacity	: 1.75 MTPA
2) Anticipated year of completion	: 2021-22
3) Production in 2021-22 up to Apr, 2021	: 0.17 MT
4) Overburden removal in 2021-22 up to Apr, 2021	: 1.49 M. Cum
D) General Status in brief as on 30.04.2021:	
1. Mining Plan:	Approved on 25.11.2014
2. Mining Lease:	Covered under NGML valid for further 20 years.
3. Environment Clearance:	Obtained for 2.00 MTPA (peak) on 19.03.2015.

4.	NF Land required (799.96 Ha as per FR): Requisitioned for Ac. 1201-00gts : On 19.04.16, Akenapalli Village Govt. Land Ac. 44.20gts (Quarry) handed over to SCCL. On 09.6.2016, Govt. Assigned Ac. 32-34gts (MM), handed over to SCCL. Ac.125-16gts: On 15.05.2018, land handed over to SCCL. Ac. 173-06gts: For Ac. 50-21gts, on 05.03.2019, land handed over to SCCL. Remaining Ac.122.25gts: PN published on 07.07.2019. Objections filed against PN and verified by the LAO, BPA. PD published on 08.07.2020. LOA, BPA conducted the field verification on 20.04.2021. Preparation of Award is under process.
5.	Status of R&R of Dubbagudem Village (350PDF): Enjoyment & SES completed on 22.05.2019 (Structures land: Ac. 8-20gts & Agriculture land: Ac.17-13gts i.e. Total land = Ac. 25-33gts & Total houses-243). PN published on 08.02.2020 for Ac. 08-20gts of structures land & on 24.03.2020, for agriculture land of Ac.17-13gts. RDO, BPA sent letters to forest, horticulture, RWS & Excise for valuation of trees, bore wells on 28.07.2020. Estimation of trees completed by 17.09.2020 & wells estimation by 11.11.2020. Houses estimation is under progress from 02.11.2020 by SCCL civil dept. PD published for Ac. 17-13gts of patta land on 02.04.2021.
6.	Development of R&R centre: PN published. RDO, BPA conducted Negotiation with land owners & fixed the compensation amount @ 12 L/Acre and Land owners consent given. On 12.09.2020, RDO, BPA sent DLNC copies to DC for approval. On 18.11.2020 RDO, BPA, sent PD proposals to DC, MNCL. PD published on 04.12.2020. On 12.01.2021, Tahsildar, Kasipet issued Award Enquiry Notices & prepared the Awards as per RFCT LAR&R Act 2013. On 23.04.2021, Rs. 5.008 Cr. deposited at DC, Mancherial. Amount to be disbursed.
7.	Diversions of 132KV OHT lines: Completed on 5.03.2017.
8.	Diversion of 33Kv OHT lines: Completed.
9.	Diversion of Nallah: Completed.
10.	CHP: Completed.
11.	Diversion of Road (5.48 Km) Part-A: Work awarded & work is under progress.
12.	Diversion of Road (5.57Km) Part-B - R&B accepted to take up the work. Work awarded & commenced from 04.11.2020.
13.	Flood protection bund (6.1Km): Will be taken up departmentally.
14.	Procurement of HEMM: Required HEMM procured.
15.	OBR: OB removal commenced from 21.04.2017.
16.	Coal Production: Coal production commenced. 1. 2017-18 = 1.01 MT 2. 2018-19 = 0.80 MT 3. 2019-20 = 1.75 MT 4. 2020-21 = 1.34 MT

10. **KTK OC-2:**

A) Date of sanction	: FR : 14.05.2015, RCE: 19.8.2017
B) Financial Progress:	
1) Sanctioned capital	: Rs. 427.46 Cr. RCE: 442.42 Cr.
2) Total Capital Outlay	: Rs. 368.23 Cr.
3) Cumulative expenditure up to Apr, 21	: Rs. 109.25 Cr. (Provisional)
4) Now anticipated cost	: Rs. 442.42 Cr.
5) Status of RCE/RFR	: RCE approved on 19.8.2017
C) Physical Progress:	
1) Ultimate Capacity	: 1.25 MTPA
2) Anticipated year of completion	: 2018-19
3) Production realization in 2021-22 up to Apr, 2021	: 0.05 MT

4) Overburden removal in 2021-22 up to Apr, 2021	: 1.27 M. Cum
D) General Status in brief as on 30.04.2021:	
1. Mining plan: Approved on 26.07.2016.	
2. Environment clearance: Obtained for 1.50 MTPA (peak) on 26.10.2016.	
3. NF Land required (668.23 Ha.). 594.65 Ha is under possession. Govt. Land (Ac. 55-03gts) –Required for R&R: Survey is to be taken up Govt. Land (Ac. 23-25gts) - Deputy Inspector of Survey inspected on 27.09.2018. ADSLR has to approve SDR after inspection of site. MRO has to submit scrutinized enjoyment report to RDO. Pvt. Land (Ac. 75 - 21gts) -: SDR submitted to RDO during May'18.	
4. R & R Status (922 PDF and 125 PAF): Gaddiganipalli, Fageergadda and Balajinagar villages have to be rehabilitated. R&R site is identified at SCCL land at Chelpur village, Ghanpur, Mandal. Gaddiganipalli Village boundary demarcated by fixing pillars. SD & SES Survey completed and report submitted to RDO on 28.10.2018. Wood value measurement completed. Consent to be obtained from Gaddiganipalli committee and a letter to be taken from RDO for technical committee approval.	
5. Power supply arrangement (33 Kv line): New H.T line commissioned and charged.	
6. Diversion of Nallah: Completed.	
7. Diversion of road: Completed.	
8. CHP construction: Completed.	
9. Procurement of HEMM: Required HEMM procured.	
10. OBR: OB removal commenced by contractor from 01.09.2017.	
11. Commencement of Production: Coal production commenced from 22.02.2018. 1. 2017-18 = 0.34 MT 2. 2018-19 = 0.65 MT 3. 2019-20 = 1.27 MT 4. 2020-21 = 1.14 MT	

11. KTK OC III:

A) Date of sanction	: 04.03.2017
B) Finan B) Financial Progress:	
1) Sanctioned capital	: Rs. 413.84 Cr.
2) Total Capital Outlay	: Rs. 530.83 Cr.
3) Cumulative expenditure up to Apr, 2021	: Rs. 230.95 Cr. (provisional).
4) Now anticipated cost	: Rs. 413.84 Cr.
5) Status of RCE/RFR	
C) Physical Progress:	
1) Ultimate Capacity	: 2.50 MTPA
2) Anticipated year of completion	: 2021-22
3) Production in 2021-22 up to Apr, 2021	: 0.03 MT
4) Overburden removal in 2021-22 up to Apr, 2021	: 1.45 M. Cum
D) General Status in brief as on 30.04.2021:	
1. Mining plan: Approved on 19.11.2018.	
2. Mining lease: On 10.07.2020, State Govt. Issued LoI/Memo	
3. Environment clearance: Obtained for 3.75 MTPA for OC & 0.48 for UG (peak) on 27.04.2020.	

4. Non forest land acquisition: Revised Requisition submitted to Revenue Authorities on 21.04.2018, for Ac.2031-01gts. SD & enjoyment surveys completed. PN published for Ac. 411-01½gts on 05.05.2019. Consent obtained @ Rs. 15 L/Acre from villagers. Award enquiry conducted on 19/20.03.2020 & Rs. 64.04 Cr. deposited to DC. Award passed by DC & compensation disbursed on 10.06.2020. Ac. 357-00gts possessed in Mar'21. 09 dispute cases to be addressed by Revenue dept. PN published for another 412 Acres on 03.02.2020. Award enquiry was completed on 23.06.2020. Note approved for Rs. 71 Cr. & Rs. 35 Cr. allocated on 10.07.2020. Declaration is under process.
5. R&R: R&R of Madhavaopalli @181 PDF completed & village handed over.
6. CHP: Erection of Mobile Crusher completed in Jan'21. Construction of permanent CHP (PWTLs) will be taken up later.
7. Diversion of transmission line: Work completed on 20.02.2020.
8. Diversion of Road for Coal Transportation and Service road (1.80 KM): Completed in Jan'21.
9. OBR: OBR commenced from 15.07.2020.
10. Coal production: Commenced from 05.03.2021 & achieved 0.016 MT during 2020-21.

12. Godavarikhani Coal Mine (No. 2 & 2A and No. 5):

A) Date of sanction	: FR: 26.07.2019
B) Financial Progress:	
1) Sanctioned capital	: FR: Rs. 438.98 Cr.
2) Total Capital Outlay	: Rs. 607.04 Cr.
3) Cumulative expenditure up to Apr, 21	: Rs. 66.28 Cr. (Provisional)
4) Now anticipated cost	: Rs. 438.98 Cr.
5) Status of RCE	:
C) Physical Progress:	
1) Ultimate Capacity	: 3.00 MTPA
2) Anticipated year of completion	: 2022-23
3) Production in 2021-22 up to Apr, 2021	: -
4) Overburden removal in 2021-22 up to Apr, 2021	: -
D) <u>General Status in brief as on 30.04.2021:</u>	
1. Mining plan: Approved on 29.03.2019.	
2. Environment clearance: On 05.09.2020, Form-I resubmitted Amended ToR received on 17.03.2021. EPH postponed from 28.04.2021 due to Covid-19 pandemic. It is also linked to Sivaram ESZ for which draft ESZ notification has to be given by MoEF & CC. Meeting held on 05.10.2020 with State Govt. & recommended to MoEF & CC to issue NoC from NBWL.	
3. Mining Lease: Available.	
4. Acquisition of Private land (Ac. 24-15gts required for Road & Nallah): PN published on 30.05.2019. On 23.09.2019 compensation fixed as Rs. 12.00 L/Acre. PD published. Rs.2.19 Cr. paid for Ac. 18-12½gts as on 21.01.2021.	
5. Acquisition of Govt. Land (Ac. 40-36gts): Ac.6-15gts in Janagaon Village-PD approved on 15.08.2020. Ac.6-21gts of Mutyala village-PD approved on 15.08.2020. Ac.01-34 gts of Janagaon Village for diversion of Nallah is pending. Ac.23-15gts of Sundilla village-Enjoyment survey completed & report awaited.	

6. Acquisition of NFL (Ac. 186-19gts required for Quarry & Dump yard-Ac. 77-29gts, Private land + Ac.108-30gts, Govt. land): SD & Enjoyment survey completed for Ac. 33-33gts of private land. PN published (for Ac. 17-29gts+Ac. 16-04gts) on 05.12.2019. Remaining land Ac. 44-02gts is pending due to overlapping of village boundaries. Enjoyment survey completed & report awaited. Ac.108-30gts of Govt. land - SD & Enjoyment Survey completed for Ac. 48-31gts. PN published on 15.12.'20. Ac. 79-25gts: SD & enjoyment Survey completed & report awaited (pending due to overlapping of village boundaries).
7. Govt. Land (Ac. 294-30gts): Addl. Collector, Peddapalli, advised to take up the detailed enjoyment survey for the said lands for finalization of the issue. Enjoyment survey completed & report awaited.
8. Diversion of Road: 8 Hume pipe Culverts & 5 Slab Culverts completed and further work is under progress.
9. Diversion of Nallah: Work awarded on 04.05.2019. Work commenced during Dec'19 & is under progress.
10. Relocation of Main Magazine: Location finalised near Upparlakesaram in SCCL land. Requested Chief Controller of Explosives, Chennai for construction of Magazine on 28.01.2021.
11. Shift. of existing Nursery: Completed.
12. Shift. of Gas godown: Construction of buildings is under progress.
13. Diversion of 33Kv TSNPDCL OHT Line: To be taken up.
14. Diversion of BSNL Tele Communication Cables: To be taken up
15. Shifting of 33Kv outdoor Sub-station: Construction of substation is under progress.
16. Procurement of P&M: Existing MOCPE equipment will be utilized for some time.
17. OBR: Commencement of OBR is expected from Jun'21.
18. Commencement of Production: Coal production expected from Sep'21.

13. Naini Coal Mine:

A) Date of sanction	: FR: 20.03.2020
B) Financial Progress:	
1) Sanctioned capital	: FR: Rs. 494.30 Cr.
2) Total Capital Outlay	: Rs. 961.01 Cr.
3) Cumulative expenditure up to Apr, 2021	: Rs. 70.49 Cr. (Provisional)
4) Now anticipated cost	: Rs. 494.30 Cr.
5) Status of RCE	:
C) Physical Progress:	
1) Ultimate Capacity	: 10.00 MTPA
2) Anticipated year of completion	: 2023-24
3) Production in 2021-22 up to Apr, 2021	: -
4) Overburden removal in 2021-22 up to Apr, 2021	: -
D) General Status in brief as on 30.04.2021:	
1. Mining plan: Approved on 29.03.2019.	
2. Environmental Clearance: ToR obtained for 10 MTPA on 26.11.2019. EPH conducted on 20.01.2021. Form-2 submitted on 14.04.2021. EDS raised on 28.04.2021 & reply submitted on 30.04.2021.	
3. Mining Lease: 11(1) Notification uploaded in Gazette of India website on 26.06.2020. Thus the ML for the project is obtained.	
4. Acquisition of NFL (129.524 Ha): Work order released on Nabakrushna Choudhary centre for Development Studies (NCDS) on 06.05.2020 for conducting Socio Economic survey & work may take up, likely during May'21.	

5.	Diversion of FL (783.275 Ha): On 11.02.2021, State Govt. forwarded the compliance & clarifications to MoEF & CC, sought by FAC which was held on 21.09.2020. On 24.03.2021, FAC conducted & recommended for issue of stage-1.
6.	Consultant for preparation of DPR for Railway siding: M/s IRCON has submitted final FSR on 22.11.2020. It is under process for approval of ECO Railways.
7.	DPR/Chhendipada-Jarpada road (25Km): CE works submitted DPR on 22.10.2020 & estimates @ Rs. 18.00 Cr.
8.	DPR for Strengthening of Chhendipada-Nisha Road: CE works submitted DPR on 22.10.2020 & estimates @ Rs. 36.00 Cr. Note approved to deposit Rs. 36 Cr. to R&B, Angul.
9.	Consultant/design, supply, erection & commissioning of CHP (EPC): To be taken up after appointment of MDO.
10.	Diversion of Nallah: DPR prepared and submitted to Angul irrigation Dept. on 10.06.2020. CE scrutinized the DPR and forwarded to higher Authority on 23.09.2020 for further action.
11.	Temporary Power supply (3 MVA) arrangement: EE, TPCODL (formerly CESU), informed that the initial 3 MVA power can be arranged from the existing 33KV feeder line from Chhendipada to Kosala which is passing nearby project area. The matter is under active consideration by TPCODL.
12.	Permanent Power supply arrangement for Naini (21 MVA) & New Pathrapara (30 MVA): SR GM(CP), OPTCL submitted report on 30.06.2020, stating that the system is adequate for drawl of 21 MVA power form 220/33KV substation at Rengali (30Km from Naini Project). Officials of OPTCL and SCCL met the Tahsildar, Chhendipada to discuss regarding availability of land for establishing 220/33KV substation recently. Work will be taken up after completing the land acquisition and appointment of MDO.
13.	Railway line (3.50Km)(Tentuloi to Naini): Mahanadi Coal Railway Ltd (MCRL), a JV company between MCL, IRCON & IDCO is constructing 68Km common Rail Corridor between Angul-Balaram- Putagadia-Jarapada (linking different Coal Blocks including Naini coal block) at an approximate cost of Rs. 1700 Cr. Phase-I of the project between Angul to Balaram (14Km) is under progress. SCCL agreed for 15% equity participation in MCRL along with Director in MCRL Board. NA & JS, MoC convened a meeting through VC on 08.07.2020 with CIL, MCRL, IRCON, SCCL and other stakeholders like NALCO. The status of important issues as informed by MCRL and IRCON during the meeting are: Appt. Of CEO: New CEO was appointed on 1 st Sep'20. Financial closure: Negotiations with Bank of Baroda is in progress for full term loan. Equity re-structuring: Expected to take some more time as this involves legal process. The matter will be put to MCRL Board for deliberation. Phase –II works: LAO appointed & development work is in progress. FD proposal has been submitted in Nov'20. 68Km inner corridor is likely to be completed by Mar, 2024.
14.	Exploration -130 BH (58 BH in NFL & 72 BH in FL) & GR Preparation: Drilling commenced in NFL from 17.06.2019. So far 27 BH/58 BH (6000m) completed. After lot of persuasion, drilling in the NFL commenced on 16.04.2021. 2 Nos. of drills have been deployed. 2 BHs completed and further 2 are in progress. Drilling in forest land has commenced from 27.03.2021. 4 Nos. of drills have been deployed. 9 Bhs have been completed and 4 are in progress.
15.	OBR: Commencement of OBR is expected from Oct'21.
16.	Commencement of Production: Coal production expected from Dec'21.

14. Venkatesh Khani Coal Mine:

A) Date of sanction	: 03.10.2020
B) Financial Progress:	
1) Sanctioned capital	: Rs. 484.51 Cr.
2) Total Capital Outlay	: Rs. 1423.65 Cr.
3) Cumulative expenditure up to Apr, 21	: Rs. 1.07 Cr. (Provisional)
4) Now anticipated cost	: Rs. 484.51 Cr.
5) Status of RCE	: NA
C) Physical Progress:	
1) Ultimate Capacity	: 5.30 MTPA
2) Anticipated year of completion	: 2022-23
3) Production in 2021-22 up to Apr, 2021	: --- MT
4) Overburden removal in 2021-22 up to Apr, 2021	: --- M Cum
D) General Status in brief as on 30.04.2021:	
FR of Venkatesh Khani Coal Mine (Conversion of VK No. 7 & PVK No. 5 Inclines to OC in a phased manner and Amalgamation of GK OC Mine) was approved by SCCL Board of Directors on 03.10.2020, vide minute No. 555:5.6.	
1. Mining plan: Approved on 27.01.2020 by MoC.	
2. Environmental clearance: PVK-5, VK-7 & GK OC are under EC violation. EAC meetings held to issue EC for PVK5, VK7 & GK OC and minutes received for GK OC and PVK-5. After obtaining ECs for above mines, Form-1 for VK OC will be uploaded.	
3. Diversion of FL for Surface rights (649.3014 Ha): Application submitted to PCCF on 28.02.2020. Survey of CA & Tree enumeration completed. On 08.10.2020, Advisor Forestry, CCF, DFO, KGM did site inspection. On 28.11.2020, FDO, KGM forwarded the proposal to DFO, Bhadradi Kothagudem. DFO forward to CCF on 28.11.2020 & CCF to PCCF on 04.12.2020 PCCF forward to State Govt. on 16.01.2021. State Govt. forwarded to MoEF & CC on 18.02.2021. On 08.03.2021 MoEF & CC sought certain info./clarification from state govt. On 17.04.2021, FDO, Paloncha and on 19.04.2021, FDO, Kothagudem sent EDS report to DFO, Kothagudem.	
4. Acquisition of Pvt. Land (1.32 Ha) for Road: On 15.12.2020, application submitted to DC for acquisition of 3.25 Acres Pvt. land at Penagadapa village. SD Survey completed on 06.01.2021.	
5. Acquisition of Govt. Land (25.75 Ha): State Govt. granted SIA exemption. Application to be submitted to DC.	
6. R&R (Maya Bazar & Vanama Nagar - 224 PDF): State Govt. granted SIA exemption. Application to be submitted to DC.	
7. Diversion of Road KGM to VJA (NH 30, 5.00Km): Requested NH Authority to take up the work. Rs.14, 45,500/- paid to NH for DPR preparation. DPR submitted by consultant & NH authorities approved. NIT released on 04.03.2021 & technical bid opened on 20.04.2021 & under technical evaluation. MoU concluded on 23.04.2021 & Money @ Rs. 22.50 Cr. will be deposited in May'21.	
8. Diversion of OHT lines, SAP, Telephone, OFC, VTS, Signal & communication lines: Estimates to be received from the concerned authorities.	
9. Shifting RCHP/ RLY Siding: LoI issued to CMPDIL for DPR preparation & visited the site on 10.02.2021. Required details sent to CMPDIL on 26.02.2021. CMPDIL submitted layout on 30.04.2021 & is under scrutiny. RLY Siding: M/s RITES was appointed for preparation of DPR and layout of the proposed Railway siding. FR & layout submitted to SCR on 22.02.2021. Tree felling is under progress.	

10.	Shifting of Rudrampur Filter Bed: Tender awarded on 27.07.2020 & work commenced from 23.10.2020.
11.	Diversion of 450mm raw water pipeline: Work is under progress.
12.	Diversion of Mission Bhagirada pipe line: DE Mission Bhagiradha visited the site on 29.09.2020. Cost estimates to be received from Mission Bhagiratha.
13.	Shifting of 33/3.3Kv VK sub stn. Tender awarded & agreement concluded. Work to be commenced.
14.	Shifting GM office: Note is under circulation for calling tenders.
15.	Shifting of Area Work shop: Note approved & tenders to be called.
16.	Commencement of OBR: Scheduled from Nov'21
17.	Commencement of Production: Scheduled from Jan'22



MINISTRY OF COAL

O/o Deputy Director General

A-Wing, 5th Floor, Lok Nayak Bhavan,

Lok Nayak Bhavan, New Delhi- 110003